

essence

essentially...south canterbury

9 Feature
Christmas
Shopping Guide

Profile 6
Braemar
Station

Destination 18
Top Spots to Visit

SHOP THE LOOK

Love Shopping? Our region has some superb stores, offering all sorts of unique items to generate interest and conversation. From standout trinkets to staple pieces, rugs, lamps, cushions, vases and artwork! You name it, it can be found somewhere near you.

Tievoli Trading

Homewares, Garden Art & Lifestyle Store featuring unique Furniture by Evoli.



Door Stopper from \$25



Classic Fox Statue \$86




Vienna Bunny \$59.50



World Globe \$65



Dear Statue \$86




Cushion \$27.50 each




Silver Acorn \$37.50

Tievoli Trading
72 - 76 Talbot Street, Geraldine (old Barker's Shop)
Phone 0274 313 362 or visit us on FaceBook


Millie Rose BOUTIQUE




Black Linen Blouse \$149




Mink Pink - Isla Sundress Sale price \$205




Sofia Crossover Bag \$95




Ivy + Jack - Cara Ivory Tiered Mini Dress Sale price \$159.90



Sabina Top \$149



Mink Pink - Samara Midi Dress \$195



White Closet - Linen Pants \$179

Millie Rose Boutique
281 Stafford Street, Timaru
www.millierose.co.nz

LIVING with style

Range of Table Runners



Evoro lightbulb lamp \$299



Bird Ceramic Ornaments \$30 for a pair



Leaves Design Cushion \$35



Santa Sleigh Decoration \$59



Roman Coasters \$25



Riding Statue \$95



Dragonfly balance light \$299



Lantern LED Trees \$38.50 each

79 Sophia Street, Timaru
Ph: 03 688 2960 | www.livingwithstyle.co.nz
Monday to Friday 9am-5pm, Saturday 10am-3pm

contents

The days are longer and the evenings lighter, but it always feels like they are on fast forward in the run up to the holiday period. Life gets busy as summer time comes around – perhaps it's because, more than ever, we notice all the amazing spaces, places and activities around us here in Canterbury.

This month our writer Michelle gives us a round-up of reasons to keep it local these holidays – from the beautiful wilderness and waterfalls of Peel Forest to the boutique retail and cafes of towns like Geraldine, where shoppers can browse through cutting edge fashions at stores like Outline Clothing. There really are so many places to check out and activities for all the family to enjoy. Who knew that Waimate has New Zealand's largest pieces of street art? Well they do and it sounds like it's worth a look – you may even spot a wallaby or two on the way.

Michelle also got the lowdown on farming life from Duncan and Carole Mackenzie, who have recently self-published a wonderful book sharing the

ups and downs of their 50 years farming at Braemar Station, a 64,000 acre station. *Braemar Station – Celebrating 50 years of Mackenzie farming life* drew on detailed farm diaries and family photo albums to piece together an authentic tale of farming history. Apparently several publishers told the couple that farming books have had their day – we beg to differ! This is such a great read – perhaps worth wrapping up and popping under the tree for someone special.

And on the topic of Christmas, if you're worried about over-indulging this holiday season – then check out the good sense advice from Dr Libby this month. A flexitarian approach can keep you on the right side of healthy but also give you enough flex to have some fun too – sounds like the perfect compromise.

We have had a lot of fun bringing you this jam-packed issue and we hope you enjoy reading it.

From the Essence SC Team

contact us: Dorothy McLennan - Publisher
dorothy@essencemagazine.co.nz
Ph: 0274 507 532

Pat Naude - Advertising & Business Manager
pat@essencemagazine.co.nz
Ph: 022 684 5974

Liz Bell - Advertising Co-ordinator
liz@essencemagazine.co.nz
Ph: 022 176 4349

Larnya Bourdot - Graphic Designer
larnya@essencemagazine.co.nz

Published by **Essence South Canterbury Ltd**
Opinions expressed in Essence Magazine are not necessarily those of Essence South Canterbury Ltd. No responsibility is accepted for unsolicited material. No material may be reproduced without prior written permission of the publisher.

22 Chapel Street, Timaru, South Canterbury | www.essencemagazine.co.nz



essential profile | page 6



local foodies | page 15



essential health | page 16



essence holiday destination | page 18



Front Cover;
This month's front cover is Lynda Hallinan, gardening celebrity and NZ Gardening editor. Lynda will be hosting an indulgent high tea at the Rose Festival in December, see page 8 for details.

essential fashion | page 22

Refresh your vehicle's look with a wheel upgrade



RAV4	BGW Cartel	20"	with tyres	from \$2,290
Highlander	BGW Cartel	20"	with tyres	from \$2,290
Hilux	BGW DC Six	18"	with tyres	from \$2,960

CALL US ON 03 687 9280 FOR MORE INFORMATION

South Canterbury Toyota **BRIDGESTONE** TYRE CENTRE

34 Stafford Street, Timaru | www.sctoyota.co.nz

Your trusted local builder for new homes and renovations in the Mackenzie area



- New Architectural Homes
- Renovations
- Log Homes
- High Country Cabins
- Farm Buildings
- Light Commercial

Lain & Heather Hellebrich
Directors, High Country Carpentry

Email: admin@hcclimited.co.nz
Office: 1 Gall Street, FAIRLIE 7925
www.highcountrycarpentry.co.nz

0800 922 883


SILVA STUDIO

Architecture + Management

55 Theodosia St, Timaru | info@silvastudio.nz | 03 688 7575 | www.silvastudio.nz

Artma Spiritual Gallery

The Positive Power of Meditation and Natural Gems



Crystals

12 Royal Arcade Timaru 03 686 9878 Monday - Saturday 10am-5pm

Wayne Patrick Gallery

A gallery with a difference

Original Art
Art Commissions
Pet Portraits

since 1997



Art classes
Adult/youth...
and children

11A Royal Arcade Timaru
Phone: 027 606 0833 (Text only)
www.waynepatrickfineart.com
Hours: By appointment

Do you know the road code?

Test your knowledge

P O L T D R I V E R D Y
 D E V T O B E S E E N L
 E M D E O N E M E T R E
 P K G E R T O O F A S T
 E L D M S F Q L E W R Q
 N B D D K T I E V V G B
 D R N C R P R F N W T J
 S E I R L H Q I T D N Z
 B L R L T W J B A Y D T
 C G Q W K N M Q R N N N

1. Seatbelt-always make it ...
2. The latest South Canterbury road safety slogan. Drive like their life ___ on it.
3. Which part of the road do the most severe crashes happen?
4. The reason so many drivers crash at bends? Their entry speed is ...
5. The percentage of crashes involving alcohol or drugs
6. Why is turning your headlights on during the day a good thing?
7. What is the closest distance you may park to a driveway?
8. A ___ must give way at a vehicle entrance.
9. A ___ must give way at an uncontrolled intersection.
10. The minimum tyre tread depth by law is 1.5mm, but ___ millimetres at least is a much safer choice.

Be in to win a double movie pass each week for the month of November

Name
 Address.....
 Phone.....



Closing date: 29 November

Send your answers to:
 Timaru District Council – SCRS
 PO Box 522, Timaru 7940

Or take a photo (no larger than 3 MB) and email to:
 Daniel.naude@timdc.govt.nz



Soapbox Derby

An estimated 1000 people lined George Street, Timaru to watch the much anticipated, Alpine Energy Soap Box Derby! 40 teams and a number of sponsors participated helping to raise money for South Canterbury mental health charities. The vibe was electric, and organisers were blown away by the support!



Photos supplied: Alpine Energy

MADAM MAT
 Mat Binding Specialist

Located in the Peter Herron Building
 17 Butler St
 Timaru
03 688 3876
027 476 3593

Shop Hours
 Tuesday - Thursday
 12 noon - 4pm

SPF

- DESIGN
 - WEBSITE
 - ONLINE MARKETING
 - SEO

03 688 4068
 www.spfcreative.co.nz
 www.spfwebsites.co.nz

Fetes Fairs and Events

As the weather warms up the region's event calendar is in full swing.

With wide, open space and stunning scenery, our region lends itself to fabulous events - from fetes to christmas lights to a paint and wine night - we're looking forward to the festive season!



Waimate Strawberry Fare

Waimate Strawberry Fare is a Free Family day out. Offering entertainment, upmarket stalls, a wide selection of food and of course Waimate Strawberries.

Strawberries have been grown in the Waimate District since 1880, they were and still are an important contribution to the Waimate economy. In 1984 it was decided to celebrate this little luscious red fruit by staging a community event, the rest is history.

The fare today is hailed as one of the the largest annual regional events. Held on the second Saturday of December each year and attracting over 14,000 visitors from all over New Zealand.

10th December, 10.30am-4pm

WAIMATE STRAWBERRY FARE

10 December 2022, 10.30am - 4pm

Celebrate the Waimate Strawberry Fare at Seddon Square and Boland Park, Waimate. A day full of fun, free family entertainment, fantastic stalls, fabulous food and, of course, scrumptious strawberries. A great day out for all (please leave your dogs at home).

Contact: Joy ph: 027 689 8057 | email: info@waimatestrawberryfare.co.nz
 web: www.waimatestrawberryfare.co.nz

Timaru Christmas Lights

Competition Entries Open 1st November 22
 Open to Everyone!

Enter at www.timarusantaparade.co.nz

2022 Lights list available from this site from 3rd Dec, winners announced 21st December.



Timaru Paint & Wine Night

Through the Stained Glass Window

The concept is simple - take a brush in one hand, a drink in the other and let's paint a masterpiece.

Join us for a creative night of drinking and painting in Timaru! No previous painting experience necessary. Get your creative juices flowing and your brush strokes going.

We provide all the materials you need (high-quality canvas, acrylic paint, brushes). All you need to bring is your creative spirit (or find some at the bottom of a glass). At the end of the night you will leave with your own painting ready to hang up on your wall.

Wednesday 23rd of November
 Street foods Kitchen
 Tickets: www.paintvine.co.nz
 Time: 7 pm - 9 pm



Timaru Christmas Lights

Driving around and looking at the lights is a tradition for many families and The Timaru Christmas Parade Trust want to inspire and enhance a sense of Community Christmas by providing an opportunity for the Timaru Community that go above-and-beyond in decorating their home for the Christmas season 2022.

(The Christmas lights list will be available on www.timarusantaparade.co.nz from the 3rd of December)

From the 3rd of December



Club and Community Market

The Timaru Town and Country Club brings to you for the first time, a club and community market.
Sunday 27th November, 2pm - 5pm
 Timaru Town & Country Club back carpark



PrimePort Timaru Santa Parade

Join Santa on his annual journey of fun, colour and excitement as he travels along Stafford Street, down the Loop Road and onto Caroline Bay where you can then say hi to the Ballantynes Santa and meet his friends from the parade.

The results of the float competition will be announced in the parade parking circle, please ensure your float Coordinator stays at the end of the parade until after the announcement.

Lolly scramble for all participants after announcements.

Sunday 4th December, 2pm

PRIMEPORT TIMARU

Timaru Santa Parade

4th December 2022 at 2pm

INFORMATION AVAILABLE
www.timarusantaparade.co.nz | [timaruxmasparade](https://www.facebook.com/timaruxmasparade)

TIMARU DISTRICT COUNCIL | Palmyra | SOUTH CANTEBURY TOYOTA | mtf | McDonald's

In association with Timaru Christmas Parade Trust, Timaru Suburban Lions, Timaru Rotary, Timaru Host Lions, Timaru North Rotary



Mackenzie's New Mayor Anne Munro



It is an absolute honour for me to be elected Mayor of Mackenzie District for the 2022-2025 term.

There are a lot of expectations placed on a new Mayor, and I welcome them all. I was elected on to Council six years ago and, with Mayor Graham standing down after 15 years, it was the right time for me to step up.

I bring continuity, stability, and hands-on Council experience, plus six previous years' experience as an elected director on the industry good organisation Beef + Lamb New Zealand and the statutory New Zealand Meat Board.

I am proud of our Council – who five years ago initiated an organisational review and bravely chose to benchmark itself against other councils, via the local government assessment programme. Significant improvements were required to make the organisation more 'fit for purpose'. With community input, we developed a strategic vision to help focus Council's efforts on continually improving how we deliver outcomes for our community.

With so much uncertainty coming out of central Government's reforms, my three-year focus is on maintaining our local voice, protecting our assets, completing our District Plan review, supporting delivery of the Te Manahuna Ki Uta Destination Management Plan for Mackenzie, and maintaining (and where possible) improving our roads.

The Mayor should be a good communicator, listener, facilitator, co-ordinator, competent chairperson, strong community advocate and team leader, builder and player. I am looking forward to focussing on our communities and their development. It's important that Council goes back to the Twizel, Lake Tekapo and Fairlie communities to prioritise which growth projects in their townships should be progressed with most urgency. Then, let's get those projects underway.

There needs to be more Council visibility around the District and we are re-introducing rotating Council meetings between Twizel, Lake Tekapo and Fairlie. Together with regular drop-in sessions, we will be making sure we are in the best position possible to listen to what our communities are telling us.

BRAEMAR STATION Celebrating 50 years of Mackenzie farming life

words **Michelle McCullough** images supplied

When told by a publisher that the window for books about farming had closed, Duncan and Carol Mackenzie were not deterred.

The couple, who had spent most of their adult lives farming at Braemar Station in the Mackenzie district, decided to do what all good farmers do and just get on with it - releasing their book *Braemar Station – Celebrating 50 years of Mackenzie farming life* in September.

"[Being farmers] we've always had to get on and do things ourselves, and because of the isolation, we tend to become self-sufficient and find ways of solving problems. When we went through the avenues of getting the book printed, we got a few funny replies back including one company who said that farming books have had their day", Duncan said.

Despite the publisher's opinion, their self-published book has been met with rave reviews and has shown that there is still a healthy market for books about farming.

Located on the eastern shore of Lake Pūkaki, and 30 minutes from Tekapo, Braemar Station is a 64,000-acre station; farming Perendale sheep, beef cattle and deer. The Mackenzies moved to the property as newlyweds in February 1970 and raised their children Annabel and Hamish on the high-country station, which is known for spectacular views of Mt Cook, the Southern Alps and Lake Pukaki. Now retired and living in Timaru, Duncan and Carol started working on the book during the first Covid-19 lockdown in 2020. While the rest of the country was busily perfecting their banana bread recipe, the couple spent their time revisiting their history of the station using Duncan's

detailed farm diaries, and the family's precious photo albums that had been meticulously curated by Carol over the years. The 349-page book took the couple six months to write, and in a bid to maintain the authenticity of their story, they forwent the use of ghost-writers and wrote every word themselves.

Despite being "farmers not writers", the biggest hurdle the couple faced when writing the book was deciding on a fitting title, Duncan said.

"When it came to naming the book, it was really interesting. We went through a lot of scenarios, and one was because we looked at Mount Cook from our kitchen window every day, Carol wanted to call it Mount Cook For Breakfast. Everyone nowadays when they see something new, they Google it. So, you know what comes up when you search 'Mount Cook For Breakfast'? The Hermitage breakfast menu, - so we went off that idea and chose the obvious, Braemar Station. And if people Google it, what is it? Braemar Station."

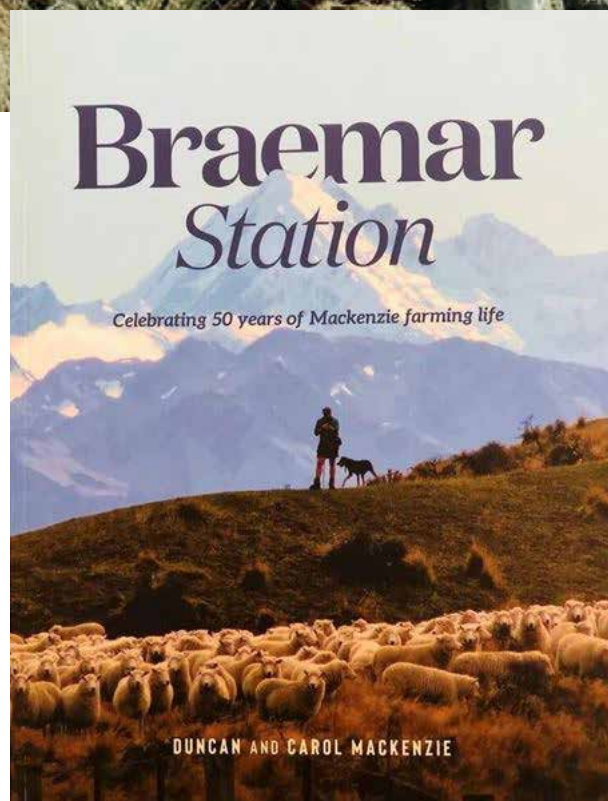
Packed full of stunning photography depicting farm and family life, *Braemar Station – Celebrating 50 years of Mackenzie farming life*, details the family's history on the station, and covers the ups and downs of modern farming in New Zealand. One of the chapters covers the raising of Lake Pūkaki in 1976. The lake level was raised by 37 metres to feed the local dams and generate power, resulting in 404.6 hectares of the Mackenzie's land, including buildings and yards, being submerged under water.

"We've done a lot of things that a lot of people haven't. A lot of people have never been through a lake raising and lost thousands of acres. Not a lot of people have changed their whole sheep flock halfway through their farming career. Not a lot of people have been through tenure review."

"When you're out socialising with people, and you tell them these things over a few gins they always say why don't you write about it? Why don't you write a book? It doesn't matter who you talk to, everyone's got a story that they want to write about but not many people are game enough to take it on."

In 2007, Duncan and Carol officially retired with son Hamish and his wife Julia now running Braemar Station. Still a working station, the property is extremely popular with visitors to the region due to its stunning views, lake fishing and walking and biking tracks including New Zealand's longest and most stunning cycle trail Alps 2 Ocean passing through the property.

To read more about this stunning station and how the Mackenzie family navigated their 50 years at Braemar, visit your local bookshop and pick up a copy of *Braemar Station – Celebrating 50 years of Mackenzie farming life*.



Keep your family safe on the roads this Christmas. Come into Goodyear for a free tyre check.

Ph 688 6666
14 Arthur Street, Timaru

GOODYEAR AUTOCARE

Petronella's BOOKSTORE

Great selection of books instore including Braemar Station

Shop 8 Rapuwai Lane, SH8, Lake Tekapo | www.petronella.co.nz | info@petronella.co.nz

Get your foot in the door with

No Deposit Finance

Starting from **\$99.64 PER WEEK**
TOTAL PAYABLE \$26,007*

Step into a new Suzuki with no deposit down and low weekly payments from just \$99.64 a week.* Drive away today and get our 5-year warranty, 24/7 roadside assistance package, and the peace of mind that comes with buying a new car.

SUZUKI

*\$99.64/week based on Ignis GLX Manual, \$21,990 plus ORC, total amount payable \$26,006.04; nil deposit, 5.9% p.a. fixed interest rate, 5 year term, \$10.35 PPSR fee, \$105 UDC loan fee and \$200 dealer origination fee. On-road costs are payable to the Dealer. Suzuki Finance is provided by UDC Finance Limited. Lending criteria, fees and standard terms and conditions apply. Offer available 1-31 October 2022. Excludes Jimmy, fleet purchases, demo vehicles and all other promotions. www.suzuki.co.nz

HOLLANDS SUZUKI CARS 13-15 North Street, Timaru 03 688 8297 www.hollandstimaru.co.nz



Festival of Roses

New events, more flowers, more food and more fun.

There's something for the whole family at this year's Timaru Festival of Roses.

Twenty years ago, local garden enthusiasts dreamt up an idea to showcase what was then Timaru's newest attraction - the Trevor Griffiths Rose Garden.

This historic garden was created from the collection of Trevor Griffiths, a noted rosarian and author - a collection of genuine old roses that was once the third biggest in the world.

The Trevor Griffiths Rose Garden is recognised by the World Federation of Rose Societies as a Garden of Excellence and has been awarded the status of Garden of National Significance by the New Zealand Gardens Trust.

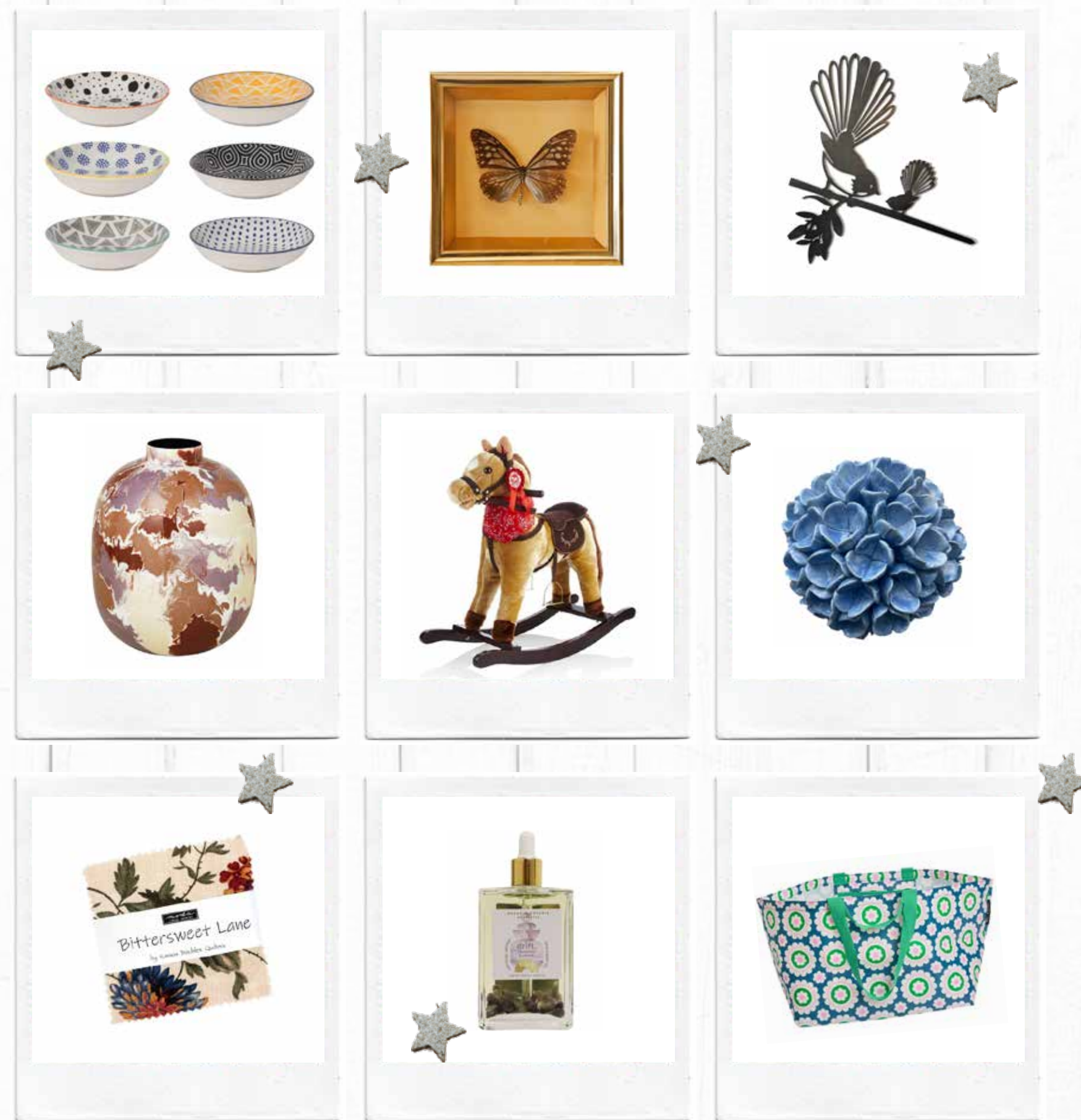
Using the new rose garden as the catalyst, in 2002 The Timaru Festival of Roses was created, and this year will mark two decades of the Festival - one of NZ's premier garden events.

The 20th Anniversary Festival will be held on 3rd - 4th December 2022 and as usual the gardens promise to be a highlight.

The Festival is a vibrant and entertaining fiesta of summer, creativity and of course the Queen of Flowers - the Rose. Each year hundreds of visitors to the region mix with thousands of locals to welcome the beginning of summer and the bloom of the roses.

Highlights for this year include:

- Children's Floral Fantasy - botanical artwork from Timaru's school children
- Floral Art exhibitions
- South Canterbury Rose Society annual rose show and rose sales
- Harvest Flavours - Workshop 1 Romantic Roses & Cottage Companions and Workshop 2 Eat, Drink & Feel Rosy plus indulgent high tea hosted by gardening celebrity and NZ Gardening editor, Lynda Hallinan. Just \$40 per person for an afternoon that will leave you feeling inspired, more knowledgeable, and no doubt keen to reinvent your garden as a space!
- In Caroline Bay Hall Saturday and Sunday - Children's Floral Fantasy, Floral Art exhibition 'Coming Up Roses' and the Rose Society annual Rose Show.
- On Sunday 4th December the Roses on the Bay Christmas Market Day provides entertainment for the whole family, with live music and stalls offering the best from New Zealand and a chance to kick off Christmas shopping. Headline act Jason Kerrison supported by The Drama Queens and Alpine Energy Brass Band.
- Also on Sunday a free demonstration from experts at the Trevor Griffiths Rose Garden marquee, the South Canterbury Rose Society, present The Care of Roses at 1.30pm.



Rose Festival

Timaru Festival of Roses

FREE ENTRY TO MARKET

SATURDAY 3RD & SUNDAY 4TH DEC
Market Day Sun 4th Dec

HOMEGROWN FLAVOURS

WITH Lynda Hallinan

Sat 3rd Dec, 1.30pm
Trevor Griffiths Rose Garden, Timaru

Tickets **\$40** via iTicket

Includes 2 after noon workshops and indulgent High Tea from G terie

THE ESSENCE OF

South Canterbury

CHRISTMAS • SHOP • EAT • DISCOVER

Art on Tyne

1. Retro Candy coins - Limited edition Wall Coins \$95 each
2. Plates - upcycled Fine China from \$49
3. Ceramic Wall hearts \$89 each
4. Earrings Galore from \$22
5. Ceramic Wall Hydrangeas - variety of colours & sizes from \$159
6. Bud vases from \$39
7. Apostle Hot Sauce gift packs \$55 each

8 Tyne Street, Oamaru | M: 027 644 5462 | Artontyne.co.nz

Polly's Patchwork

1. Bittersweet Lane Mini Charm \$9.95
2. Applique Thread 4 Pack \$109.95
3. Autumn Flowers Embroidery Kit
4. Spring Tulips Tote Bag Pattern \$22.95
5. Liberty Winterberry Holly Fabric
6. Pin Cushion \$39.95
7. Badger Cottage Pattern \$19.95
8. Make Time Mini Charm \$10.95
9. Bountiful Blues Jelly Roll \$109.95

72 Main Street, Fairlie | Ph 0273 705 098 | www.pollyspatchwork.co.nz

Country Rumours

1. Waihi Bush Organic Farm Gourmet Gift set \$80
2. Miniature replica Wool Press Utensil Holder Native timber \$120
3. Quirky felted wool 'Rat Bag' \$45
4. The Herb Farm 'Body Oil Duo' \$29.90
5. Ngaio McKee 2023 Calendar \$15
6. Happy Feet Handcrafted woollen socks in various colours and sizes 2-4yrs \$14.50
7. Lambskin Scuffs from \$65
8. Lambskin Travel Slippers from \$55.00

11 Talbot Street, Geraldine | Ph. 03 693 7957

Millie Rose Boutique

1. Bush Blooms - Tea Towel \$40
2. Bits & Dots Set of 6 - Pinch Bowls \$49.99
3. Cavallini & Co - Hummingbirds 1000 Pce - Vintage Puzzle \$595
4. Anoint - Rose Bath Salts Gift Set \$55
5. Tealight House \$55
6. Pearl - Large Bowl \$110
7. Cavallini & Co - Botanica - 2023 Desk Calendar \$40
8. Black Stamped - Latte Stoneware Mug \$30
9. Mini Suitcase Rainbow & Grid - Set of 2 \$60

www.millierose.co.nz | 281 Stafford Street, Timaru

Mint Boutique

1. Phoebe Sunglasses \$69.95
2. Everyday 6 Piece Essential Brush Set \$44
3. Retro Check Sunrock \$209
4. Lost Souls Dress \$144.99
5. Cream With Lime Quartz Candle Bowl \$89
6. Cuff Bracelet \$135
7. Hunter Wallet \$44.95
8. Anglias Dress \$209
9. Layla Midi Dress \$99.99
10. Placket Detail Top \$139
11. Zolten Blouse \$69.99
12. Gianna Top \$149
13. Range of Boxed Soap
14. Shaped and Gathered Dress

72 Main Street, Fairlie | Ph (03) 685 8084 | www.mintboutique.co.nz

Drummond & Etheridge

Call in and see our full range - we've got loads of toys in stock!

Shop in store or online at dne.co.nz

1. John Deere Cap, \$29.95
2. 12V John Deere XUV Gator Ride On, \$1,329.95
3. John Deere Animal Sounds Hayride, \$48.95
4. 1:16 John Deere 5125R with Loader, \$94.95
5. John Deere Monster Treads Lightning Wheels Tractor, \$36.95
6. John Deere Talking Toolbelt Set, \$48.95

40 Racecourse Road, Timaru | Ph 03 687 4005 | www.dne.co.nz

Timaru Sewing Centre

1. KnitPro Mindful Range Folding Scissors \$15.50
2. Mint Floral Knitting Bag \$49.80
3. Singer Dress Forms Red Size 10-16, Grey 16-22 SPECIAL \$299
4. Janome DC2030 Special \$749 + Bonus Scissors
5. New Wooden Yarn Bowls \$41.30
6. Christmas Needle Felting Kit \$27.90

158 Stafford Street, Timaru | Ph (03) 688 6764 | www.timarusewing.co.nz

7th Cloud Soaps & Candles

1. Honey Soap \$10
2. Raspberry & Vanilla Bath Bomb \$8
3. Flower Candle - Aloe & White Lily \$45
4. Soy Wax Melts - Christmas Lily \$7
5. Cut Glass Candle - Coconut & Lime \$30
6. Range of Face Masks

4 Church Street, Timaru | www.7thcloudsoaps.co.nz

Workoutfitters

1. Swannndri Whangamata Straw Hat
2. Men's Code Of Conduct Tee
3. Volcom Crisp Stone Tee
4. Volcom Mens Short
5. Volcom Hat
6. Swannndri Men's Pahiha 100% Cotton Short Sleeve Shirt
7. Swannndri Taylors Hooded Towel
8. Swannndri Wallet Pure Wool

155A Hilton Highway, Washdyke, Timaru | Ph (03) 688 6638 | www.workoutfitters.co.nz

Kidstuff

Your one stop shop for kids this Christmas

1. Hape Balance Bike
2. Paw Patrol Slot Cars
3. Doll House
4. Carrera Drift Car
5. Llorens Sofia Doll
6. Rocking Horse
7. Ride on Excavator
8. New Holland Tractor

170 Stafford Street, Timaru | Ph (03) 688 5152 | www.kidstuff.net.nz

Stompz

1. Kompanero backpack/handbag
2. Dr Martens shoes
3. Dusky Robin wallet
4. Thyra Vase
5. Miller Road room sprays and candles
6. Birkenstocks
7. Ashley & Co candles and hand wash
8. Kompanero leather overnight bag

236 Stafford Street, Timaru | Ph (03) 684 3389 | www.stompz.co.nz

Matilda and the Metalman

1. Mouth Blown Glass Vases
2. Handcrafted Stackable Tea Pot & Cup
3. Curate - Inspiration for an Individual Home
4. Thyra Vase
5. Fire Pit
6. Aria and Mia Sage Cushion
7. Sriracha Maple and Old School Hamburger Sauce

85 Main Street, Fairlie | Ph (03) 685 6090 | www.matildaandthemetalman.co.nz

Inspire Beauty & Skin

1. Organik Botanik Bath Salts
2. Stella & Gemma Huntington Tort Sunglasses
3. Organik Botanik - Drift Body Oil
4. Surmanti Pear & Passionflower Body Wash
5. Stella & Gemma Green Leopard Socks
6. Project Ten Taverna Oversize Tote
7. Surmanti Candle - Christmas Pine

120 High Street, Waimate | Ph (03) 689 7192 | www.inspire-beauty.co.nz

The Quirky Magpie

1. Duran Ribbed Glass Vase
2. Nayan Blush Rib Glass Vase
3. Honey Pot with Dipper
4. Felt Ball Pot Stand
5. Metalbird
6. Wolfkamp & Stone Birds & Postcard Jigsaw
7. The Kew Gardener's Guide to Growing House Plants
8. Metal Planter - Stand
9. Egg Holder Spiral

42 Queen St, Waimate | Ph (03) 689 2686 | www.thequirkymagpie.co.nz

Want to know the story behind 19 Crimes? Buy one and be surprised to read the story.

Michael Harrington

A British conscript turned infamous convict, Michael Harrington is perhaps best known for orchestrating one of the most daring escapes from Australia. In 1876, Harrington, along with six others, braved a massive typhoon in nothing more than a tiny rowboat to board an American whaling ship in what is now remembered as the 'Catalpa Rescue.'

22 Dee Street, Timaru | Ph 03 688 3149

Gallery 329

1. Still Life Trio by JaneT Wright
2. Household Serving Pottery by Pete Dunn
3. Golden Butterfly by Richie Tompkins
4. Blue Green Bowl Pottery by Pete Dunn
5. Japanes Batik Furoshiki (wrapping cloths) by Jane Ayres
6. Selection of Photographic Art by Lynley Simmons

329 Stafford Street, Timaru | 021 053 0373 | Gallery329CreativeArtsCollective

JewelCraft

I'm dreaming of a Jewelcraft Christmas

Diamonds & Sapphires

- 9ct White Gold Diamond \$1,995
- 9ct Diamonds \$2,899
- Platinum Emerald cut Diamonds \$15,799
- Pink Sapphire & Diamonds 18ct White Gold \$3,699
- 9ct Diamonds \$2,799
- 9ct Multi Coloured Sapphire \$2,299
- 9ct Diamond Pendant \$445
- 18ct Diamond Earrings \$1,999

Evolve Antlers \$229

Evolve Stirrups \$249

Whistle Bullet \$349 (chain not included)

Evolve Hunt & Gather Necklace \$229

Sterling Silver Stirrup Drop Earrings \$60

Sterling Silver Travelling Kiwi \$159

Sekonda Smart Watches JUST ARRIVED

- \$269
- \$269
- \$269
- \$289
- \$289
- \$289
- \$289

From the Workshop

Signet Rings \$79 each

Engravables \$445

From \$220

Workshop & Showroom 297 Stafford Street, Timaru ph 684 4882 www.jewelcraft.co.nz



Paper Daisy Story

Paper Daisy Story is a collection of beautiful and lovingly made home fragrance, all designed to promote relaxation and self-care.

Cocosoy candles, melts, reed diffusers, room sprays, hanging diffusers are all made in small batches with care and precision under the Hunter Hills, Waimate.

Our products are perfect for gifting and for the person who has it all!

Find us online at www.paperdaisystory.co.nz on Instagram, Facebook, Pinterest and TikTok



Cocoon Hair Design

The perfect little gift

Each product—from the ColorFUL Anti-Fade Shampoo, to the ColorFUL Anti-Fade Conditioner and the ColorFUL Glow Beyond Anti-Fade Serum—contains nourishing ingredients to keep your hair looking its best for longer.

Camellia oil, rich in essential omega-9 fatty acids, helps to lock in moisture and deliver brilliant shine. Tannin- and antioxidant-packed pomegranate fruit extract provides colour longevity.

Finally, roship oil, arginine and keratin, released via a unique SmartRelease Technology delivery system, shield, fortify and repair hair from damage.

Shop 20
Royal Arcade, Timaru
Ph (03) 688 8841



WildRose Lingerie

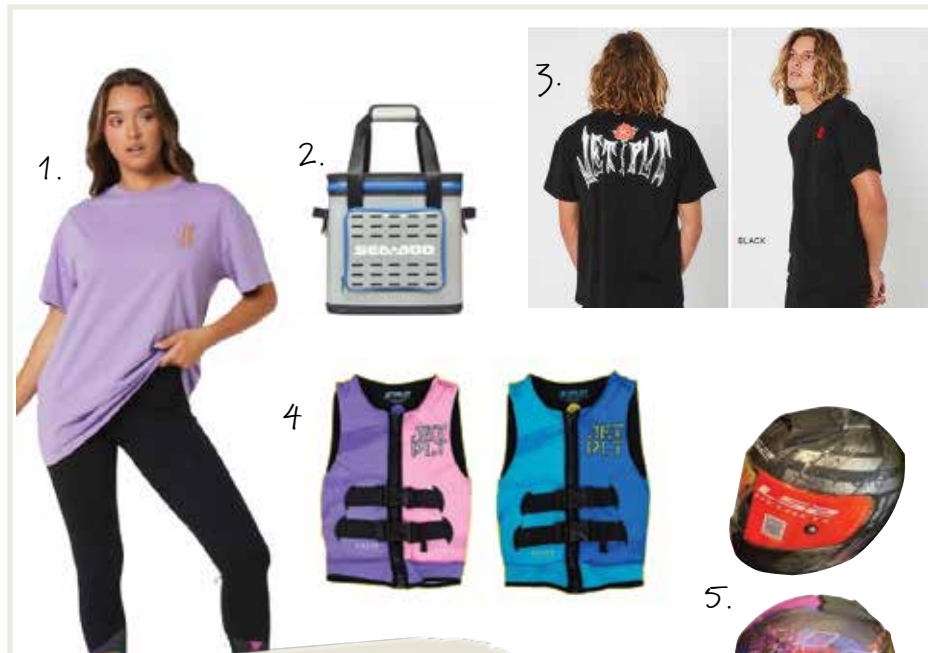
WildRose Lingerie is a new bras brand designed to support you where it really matters with a perfect balance of softness, creating the most perfect and smooth silhouette.

The girls who need comfort and a weight off their back, WildRose Lingerie specialises in bras from size 10C all the way to 24J.

We offer gift vouchers coming into the Christmas season!

SHOP NOW: www.wildroselingerie.co.nz

Facebook, Instagram, @wildrosebras



Can-am Timaru



- 1. Sina Eyes Tee \$64.99 | 2. Sea-doo Cooler Bag \$193 | 3. Coven Tee \$59 | 4. Fantastic range of childrens and adults life jackets | 5. Helmets Ls2 \$449 | 6. Arch Tee Shirt Dress \$79 | 7. The Wing \$599 | 8. Sling shot \$339 | 9. The Gripper \$279 | 10. Sand Anchor \$83 | 11. Battery Charger \$99 | 12. Good Times Muscle Tee \$49 | 13. Good Times Men's Tee (available in black and white) \$59 | 14. White Chilly Bin \$552

127 Hilton Hwy, Washdyke | Ph (03) 688 7517 | www.timarucanam.co.nz



Local Foodies

It's a great time to head out and enjoy having brunch, lunch or dinner cooked for you at one of our many local eateries. From freshly brewed coffees and sweet treats to a full 3-course dinner or the fresh flavours of Asian cuisine - we are spoilt for choice in South Canterbury so get out and enjoy



BIN INN

Celebrate your Christmas with Bin Inn's ever popular fruit mixes, nuts and grains.

We have all the ingredients you need for your Christmas baking at great prices.

We have a great range of cake decorations, icing fondants and much more.

Plus, we have an extensive range of Brewing Supplies and Brewer Kits.

Great gift ideas in store.

18 Dee Street, Timaru
Ph 03 684 9840



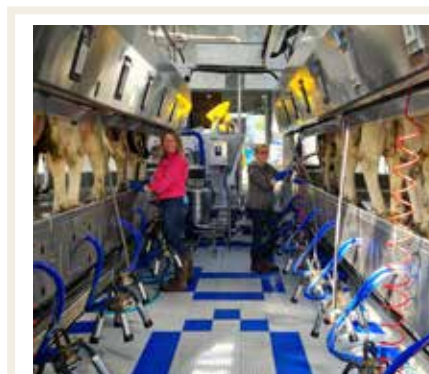
True Taste Of Kiwi

Handpicked products from local South Island artisans.

Not Just Another Gift Pack: Here at True Taste of Kiwi, we have a deep appreciation for the high-quality products created by local South Island artisans. These products aren't widely available, so when you send one of our gift packs, you'll know it's a truly unique gift.

Our mission is to not only share these products with you, but to support the talented vendors who create them. We're certain your loved ones will be just as delighted with them as we are.

Chris & Karen Turner
Pleasant Point, Ph 021 171 7931



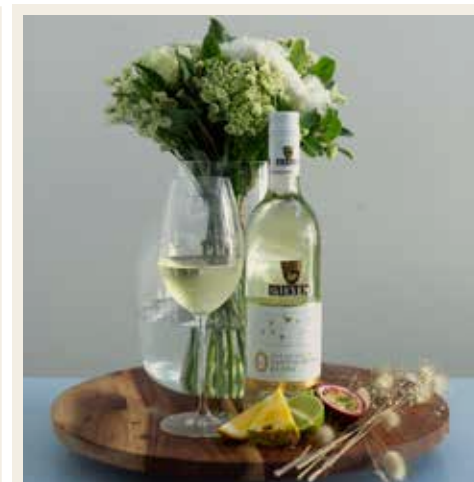
Real Milk Timaru

If you like the idea of buying local produce, made fresh each day from the farm or delivered to your door each week that comes in a 1 litre glass reusable bottle then you should contact us for details.

Our fresh milk is unpasteurised and non homogenised so it's had no processing done to it so it's completely natural and is so good for you.

We are open at the farm shop 24/7 and our delivery truck delivers once a week around South Canterbury. Our shop has a viewing window so customers can watch the cows being milked at milking time.

Come down and check us out at
22 Fairview Rd Timaru or
www.info@realmilktimaru.co.nz



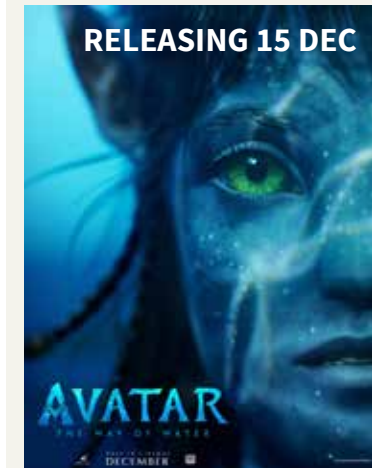
Warehouse Liquor

Made from our premium full-strength Sauvignon Blanc, Giesen 0% keeps all the best qualities of Giesen Estate.

It's aromatically expressive, crisp, and refreshing, with the varietal characteristics you know and love... only with the alcohol gently removed.

When we say there's a Giesen wine for every occasion, we mean it! If you're reducing or moderating your alcohol intake, these alcohol-removed and low alc wines offer a delicious alternative.

35 Browne Street, Timaru
Ph 03 688 1012



RELEASING 15 DEC

Movie Max Digital

Don't know what to get for Christmas, why not give the gift of movies?

Movie Max Digital Cinemas has gift vouchers available for all ticket types and offers discounts for bulk purchases of five or more. For more information please give us a call on 03 684 6975 or send us an email at info@moviemaxdigital.co.nz or visit our website www.moviemaxdigital.co.nz



Certified Organic Products for People, Pets & Plants

- Neem Skin and hair care products
- Neem Garden Care Products
- Neem Pet care products
- Ayurvedic health supplements
- Diatomaceous earth powder (Animal feed and soil conditioner)

green trading for good living
www.greentrading.co.nz

native neem
www.nativeneem.com



Painful feet?

Phone us for SHOCKWAVE treatment. We are having spectacular results treating Heel pain, Plantar Fasciitis, Achilles Tendonitis and Fibromas.

We also stock the fabulous 100% woollen Gierup slipper range which are incredibly warm and steam felted for a perfect fit.

Now that Summer is knocking, slip into a pair of our Archies orthotic Jandals. They come in a range of bright summer colours to brighten your day.



17 Dee street, Timaru | 03-683 1448 | caterowepodiatry@outlook.com

WAREHOUSE LIQUOR BIRTHDAY SPECIALS

Valid until Monday 5 December 2022

BROWNS BROTHERS AUSTRALIAN TAWNY PORT 750ml \$20.99	PALS VODKA 10 pack cans \$24.99	KGB VODKA 12 pack bottles \$21.99	CORUBA RUM 1L \$43.99
JIM BEAM 1L \$42.99	EXPORT GOLD 24 pack bottles \$36.99	DOUBLE BROWN 18 pack cans \$23.99	DEWAR'S WHITE LABEL WHISKY 1L \$38.99
GORDON'S Gin 1L \$39.99	DOUBLE BROWN 18 pack cans \$23.99	DEWAR'S WHITE LABEL WHISKY 1L \$38.99	SPEIGHTS Summer Ultra Low Carb Lager 24 Pack \$37.99
CORUBA & COLA 10 pack bottles \$25.99	HEINEKEN 24 pack bottles \$44.99	SMIRNOFF Vodka 1L \$39.99	ST REMY Brandy 1L \$46.99

35 Browne St, Timaru | P 03 688 1012 | www.warehouseliquor.co.nz



Being a 'flexitarian' when it comes to your health

Words: Dr Libby Weaver

Have you noticed that every possible way of eating has a label now? While it's fantastic to see more people taking an active interest in their wellbeing, these labels often come with strict rules. This set of criteria around what's acceptable and what's not may work for some, yet for others it simply isn't sustainable.

When people ask me what to eat, I will often encourage them to explore what I fondly call 'flexitarian eating'. This is

all about listening to what will best serve your body, health, energy (note: this does not mean tastebuds rule the choice!), and even your spiritual practice. The concept of being a 'flexitarian' can be used by anyone. It simply means you don't have stringent rules.

You might approach your nourishment with the idea that you have high standards. In other words, you don't avoid that highly processed, sugar and preservative laden snack because someone told you not to. Instead, you don't eat it because it doesn't serve your health or quality of life. In saying that, please always remember that it is what

you mostly do that impacts your health, not what you do occasionally. Feeling guilty about the odd poor quality food choice does nothing for your health either.

Another flexible approach is what some like to call "zig and zag". A "zig" meal is made up of nutrient-dense foods and no alcohol. While a "zag" meal focuses more on the company you are in, being playful and relaxing. Zags are part of a healthy and sustainable lifestyle. If this approach is going to serve someone's health, I would guide them to zag once a week, or for three out of their 35 eating occasions in a week. For others, five zag occasions better suits them. That's still 30 meals that are high quality nutritionally!

If you know you are going to your office party, or friend's birthday – that doesn't mean the whole day is a write off, yet so many people approach their life or health in this way! This also tends to ramp up over the Christmas and summer holidays period. With the increase in festivities, many people seem to throw nourishing choices out the window until all the celebrations are over and the new year's resolutions kick in. Going to your festive celebrations is even more reason to eat a nutritious breakfast and lunch and to follow up with nutrient-dense food choices the next day. You enjoy the zag, but when you live mostly as a zig, the zag takes very little toll on your overall wellbeing.

The way you take care of yourself needs to be sustainable. When you are kinder to yourself and put less pressure on fulfilling set criteria, you are more likely to make choices in your life that you can maintain. So, if following rules feels like deprivation to you, or if you are just looking for a more sustainable approach to how you eat, give flexitarianism a try.

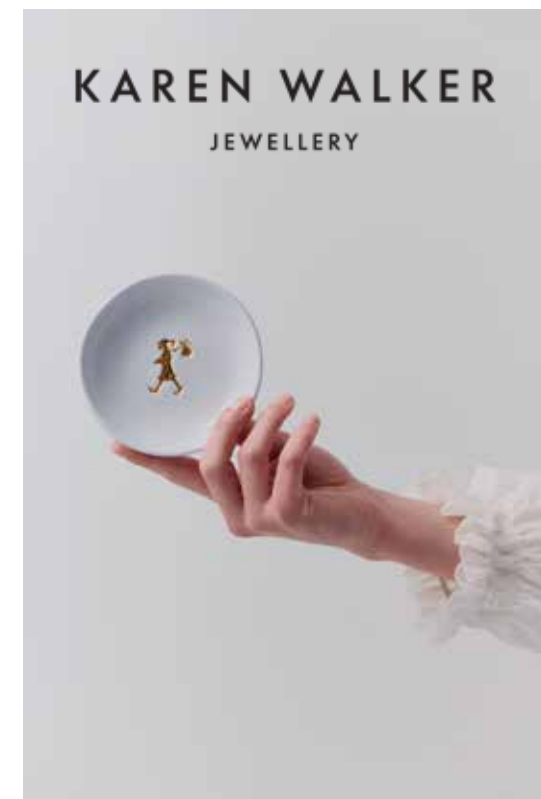
Nutritional biochemist Dr Libby Weaver (PhD) is a 13-times bestselling author and speaker. Her practical and supportive online courses have helped more than 10,000 women around the world find freedom from their health challenges. For more information go to www.drlibby.com



NEW COLLECTION

Garden People

- Ms Gnome Necklace in 9ct gold, \$1,579
- Sterling Silver Watering Can Necklace, \$269
- Sterling Silver Garden Fork Necklace, \$219
- Sterling Silver Gumboot Necklace, \$219
- Sterling Silver Carrot Earrings, \$229
- Claybird Runaway Jewellery Dish, \$59
- Sterling Silver Sweet Corn Earrings, \$229



- C7 Series Gents Automatic, \$499
- Ladies Eco-Drive with Crystal-Set Dial, \$599
- Ladies Eco-Drive with Diamonds, \$399



Citizen Watches

- Promaster Marine Automatic Dive Watch, \$599
- Promaster Marine Eco-Drive Dive Watch, \$1,099
- Ladies Eco-Drive, \$450

CANON STREET OPTOMETRISTS where vision never goes out of style

SERENGETI
THE MOST ADVANCED EYEWEAR

26 Canon Street, Timaru info@canonstreet.co.nz
03 688 9791 www.canonstreetoptometrists.co.nz

MORRIS WADDELL ELECTRICAL

'THE BOYS IN THE BLUE VANS'

03 686 2422

For all your home lighting solutions call us today

60 GLENITI ROAD | 24/7 03 686 2422
E admin@morriswaddell.co.nz
www.morriswaddellelectrical.co.nz

PANDORA

- Festive Gingerbread House Charm, \$99
- Festive Car & Christmas Tree Charm, \$89
- Sparkling Herbarium Cluster Jewellery Gift Set, \$169
- Festive Bell Dangle Charm, \$139
- Limited Edition Festive Nutcracker 2022 Charm, \$89
- Gitter Christmas Tree Charm, \$129
- Platinum Emerald & Diamond Ring with 18ct Yellow Gold, \$7,900
- Prasiolite with Laser Pierced Setting Detail, \$1,090
- Platinum & Diamond Ring, \$12,995
- 9ct White Gold Prasiolite Ring with 14ct Yellow Gold, \$2,395

Handmade by Brent

Handmade by Robert

Handmade by Brent

Handmade by Bernadette

The Ringmakers

Manufacturers of Fine Jewellery

Call us today 03 688 1362
270 Stafford Street, Timaru www.theringmakers.co.nz

BUY Local



Air Safaris

Explore New Zealand's most spectacular alpine scenery, from snowy mountain ranges and turquoise lakes, to epic glaciers and amazing ice fields flowing through West Coast rainforests to the Tasman Sea!

The Grand Traverse is New Zealand's premier scenic flight, so you can go further and see more. Highlights include Aoraki Mt Cook, Lake Tekapo, the Southern Alps mountain range, Tasman, Franz and Fox glaciers, unique braided rivers, golden tussock lands, and beautiful glacial lakes.

Turn your visit into the adventure of a lifetime! Contact us for bookings or more information.

State Highway 8, Lake Tekapo
03 680 6880 | 0800 806 880
sales@airsafaris.co.nz



THE GREEN MAN

ESCAPE TO PEEL FOREST

Set in tranquil Peel Forest village, our cafe is the ideal place to unwind. Just a short drive to the walking tracks and with plenty of outside space, it's the perfect destination away from town, come rain or shine.

THE GREEN MAN AT PEEL FOREST
Open Thurs to Sun from 10am
Evening Dining Fri & Sat from 5.30pm

1202 Peel Forest Rd, Peel Forest
03 696 3567
thegreenmanpeelforest.co.nz



The Greedy Cow Café

The best thing about road tripping is to discover beautiful little towns with magic spots. But it turns even better when we find a charming café with all we want: welcoming staff, nice atmosphere, homemade food, french style pastries, and amazing coffee!

These are the feelings we get when we enter The Greedy Cow café at Lake Tekapo, New Zealand.

With a huge variety of food and drinks, for all tastes: vegetarian, vegan, gluten-free, and a Greedy breakfast of champions, which is just the beginning of all you need for a great day in this beautiful part of paradise!

16 Rapuwai Lane, Lake Tekapo | www.greedycowtekapo.com



Fairlie Heritage Museum

The Museum houses a variety of displays; the historic Mabel Binney Cottage, the Blacksmith shop and Fairlie Railway Station.

Recent additions are the Fairlie Motor Heritage and Brian Beattie pavilions housing motorised vehicles. As well as an amazing number of exhibits, there is a surprising array of local farm equipment of bygone days, horsedrawn vehicles, a camera collection, diaramas of a typical school room, a local hospital room and even a homebuilt gyrocopter that actually flies!

Enter via the delightful Sucre Sale Café (Fri-Mon) a popular refreshment stop! The Museum is open as advised by signage or by texting 0210 569 116.

49 Mt Cook Road, Fairlie



Moostique Gastromarket

A boutique market located in Twizel providing New Zealand-made and international artisan foods, gourmet kitchen products, merino, gift hampers/baskets and heaps more.

Make sure you pop into the shop to have a browse and bring a bit of Italy, France or New Zealand home with you. Still looking for a Christmas present? Choose from our diverse selection of premium gift boxes and food hampers filled with New Zealand-made gourmet products, or create your own! From baking and baths to sauces and sweets, check out our range on our website. Our gift boxes are available for pickup or can be shipped nationwide.

www.moostiquemarket.com
26B Market Place Twizel

HOLIDAY DESTINATION

You don't need to travel far to live your best life this summer, with everything you need to have an amazing holiday right here in our very own backyard.



Timaru

For a holiday by the sea, you can't beat Timaru on a sunny day. This bustling town is home to many wonderful shops and restaurants, and with safe swimming, a popular children's playground and of course the town's most famous residents the little penguins/ kororā, Caroline Bay is a hit with families from all over New Zealand. The Timaru coastline is also popular with surfers and those who love to explore rock pools. And if you're not keen on getting sand between your toes, you can always check out the South Canterbury Museum, Timaru Botanic Gardens or the Otipua Wetlands which is a haven of stunning fauna and flora. South Canterbury is also home to native long-tailed bats/ pekapeka. These tiny little bats are endangered but if you are lucky you might see them fluttering about the Raincliff Forest, Kakahu Bush, Talbot Forest or Pleasant Point Domain at dusk.

Waimate

Speaking of art, despite being known for wallabies and strawberries, Waimate is also the site of New Zealand's largest pieces of street art. Using two ginormous silos as his canvas, local artist Bill Scott has created this amazing piece of art that depicts the town's rich history. For art that's a bit older, make a stop at Maungati to see some incredible Maori rock art that has been preserved in limestone outcrops for more than 200 years.

The Waimate region also boasts many walking and biking tracks with something to suit everyone. Check out the Waihao River Walkway and White Horse Walkway, or test your fitness and tackle the Ngaio Track and be rewarded with magnificent views of the ocean and Waihaorunga.



Shop & Win

With Christmas just around the corner, the Waimate District is celebrating local businesses and encouraging people to shop local by giving you the chance to win a Prezzy Card (perfect timing with the silly season fast approaching)! All you have to do is spend \$10 or more at participating businesses in the Waimate District and you will go in the draw to win one of three Prezzy Cards.

To learn more about shopping in the Waimate District and where to shop for your chance to win, head to waimate.org.nz/shop-local.



Geraldine

Fancy yourself as a bit of a foodie? Make sure you plan a trip to Geraldine to enjoy a lazy lunch at one of the town's popular cafes. It is also a great spot to indulge in a bit of retail therapy with boutique shopping offering a range of locally made art, fashion, and local produce. In Geraldine, you will also find the world-famous Giant Jersey, one of Aotearoa's oldest cinemas, a vintage car museum and a unique 9-hole golf course that offers grand views across the township. Just outside Geraldine, Peel Forest is a natural playground with big trees, waterfalls and mountain peaks, and an abundance of birdlife calling the forest home. The Peel Forest Conservation area has more than 15 trails to choose from to suit every level of fitness, experience and time frame.

Mackenzie Region

For action and adventure, venture inland to the majestic Aoraki/Mount Cook National Park which is home to a number of amazing tracks of varying lengths to suit a wide spectrum of fitness levels including the Hooker Valley Track. For a bit more adventure, you'll find lots of options in the Mackenzie region to get your adrenaline pumping with air safaris, skydiving and Heli-hikes all on offer. At the base of Mount Cook, you will find the start of the Alps to Ocean Cycle Trail, New Zealand's longest and most picturesque cycle trail. This eight-stage trail will take you through Twizel and Tekapo and along the shores of Lake Benmore before finishing up in the official Steampunk capital of the world - Oamaru. Despite being just outside the South Canterbury border Oamaru's Victorian Quarter is well worth a trip across the Waitaki Bridge with amazing shops, cafes, breweries, and art galleries that are just waiting to be explored.



With all this on offer and so much more, make South Canterbury your number-one holiday destination this summer!

Love and WIN!
Spend \$10 or more at participating businesses and go in the draw to win

1st Prize \$500 Prezzy Card
2nd Prize \$300 Prezzy Card
3rd Prize \$150 Prezzy Card

waimate.org.nz/shop-local

WAIMATE a district to explore

Waimate District Council



Silverstream Hotel

Come and join us at the Silverstream Hotel Beer Garden this summer!

Conveniently located on State Highway 8 in Kimbell - 3 minutes from the Opihi Fairlie-Kimbell River Track -10 minutes from Lake Opuha - 20 minutes from Lake Tekapo - this historic country pub is the stop on a warm summer's day. Enjoy a nice cold drink and a meal in the relaxed setting, play garden games and listen to some tunes. Bike parking provided. Dogs and horses welcome. Ring ahead to check paddock availability. Event details and more on Facebook.

762 Fairlie-Tekapo Road, Kimbell
Ph 03 685 8370
hello@kimbellhotel.co.nz
SilverstreamHotelKimbell



Ngā Whare Mānatu

Treat that someone special in your life...

Planning a romantic weekend away, celebrating a wedding night, an anniversary, or a night away with that special someone. Ngā Whare Mānatu is a unique couple's retreat offering four luxury accommodation units above the beautiful boutique village of Geraldine. Nestled amongst native plants, with stunning birdsong, enjoy views of the east coast sunrise, outdoor baths, and the amazing night sky with that someone special. Our vision is to provide you with a magical relaxing experience that showcases our natural environment and all only a two-minute drive from Geraldine.

E: admin@ahuwhenua.nz
M: 027 201 1920



Housekeepers Design

Bold. Edgy. Second-to-None.

Say hello to Housekeepers Design, the cool, eclectic Fashion and Homeware store located at the edge of the Heritage Precinct. Redecorating? Need a wardrobe update? Or shopping for a gift? With an exciting mix of local and international designer brands, it's easy to find something to help you stand out from the crowd.

18 Harbour St, Oamaru
www.housekeepersdesign.nz



U Wash Laundromat

U WASH LAUNDROMAT located at 80 King Street Timaru is the perfect destination for everything you want. Powered by Eftpos, you don't need to scramble for coins or tokens.

A U Wash Laundromat gives people the opportunity to do some washing while they can go and explore their own backyard. You have the opportunity to do your laundry, wash your car, fill up with fuel and get something to eat while you're at it and don't forget to wash your dog as well all while waiting for your washing to finish. U Wash, your one stop destination.

Open seven days a week - 80 King Street, Redruth, Timaru



Art on Tyne

A funky wee Art Gallery right in the heart of Oamaru's beautiful Victorian Town. Proudly stocking only New Zealand made and created.

8 Tyne Street, Oamaru | 027 644 5462

ASK AN *Expert*



Hannah Harrison

Leora Curtains

Having always had a strong passion for interior decorating, Hannah began working in the Curtain making industry in 2016 and currently owns Leora Curtains.

Do you make curtains yourselves or do you outsource that to someone else?

All our curtains are made onsite at our showroom on 32 Woolcombe Street.

Our team can work with you from a free measure and quote to finished product and installation. Our current lead time is around four weeks.

We can tailor our service to suit your home and have a small range of fabrics available in Timaru if you need curtains in a hurry or want to make your own. High-quality ready-made curtains are also available in store.

Can I come and view your fabric?

We have an extensive showroom with over 500 fabric samples that can be viewed in store and loaned out on app to be viewed in your home and business.

Do you offer commercial service or only residential?

While our focus is primarily on residential window dressing, we also offer a commercial service. Including: Shower Curtains, Privacy curtains, Showroom curtains.

Can I supply my own fabric or curtains to be altered?

If you have a fabric that you fell in love with on site, but you feel like you do not have the expertise to make it into curtains or blinds, our team not only works with fabric that we supply but can work with fabric you provide.

We repair and alter both second hand and readymade curtains. If you need a blackout thermal lining added to your curtains or your existing lining replaced we offer a same day alteration service.

Whether you want to transform a room or frame your perfect view, give us a call and our expert team will guide you through the process making it effortless.



32 Woolcombe Street, Timaru
Open Monday to Friday from 9am - 5pm,
Saturday 10am - 12pm.



Eamon Haggart

Origin Design

Origin is a graphic and web design company based in Timaru with over 20 years' experience in the design industry.

What service do you offer?

Origin offers a full design service including branding projects from initial logo & naming concepts through to marketing material rollout, building & vehicle signage, social media creative & full website development.

How many years have you been in business for?

Origin began in April 2020 during the first nationwide lockdown.

What will be some positive outcomes of coming to Origin Design?

As both a graphic and web design company, Origin is in the unique position of being able to offer full design services at a competitive rate.

What kinds of websites have you designed?

Various sites include; Masters Games, Paul Smith Earthmoving, Timpany Walton, Agraforum, NZ Drillers Federation, JMJ Lawyers, Mackenzie College, Bleeker & Weith, Jeff Allan Painting, Thompsons Refrigeration, HC Rural, Milward Finlay Lobb, Timaru Kāhui Ako, Tara Finance, Harper Street Health, Blue Lake, HC Partners, Saikou, Stu Heap, Mainland, Ranger, Memory Lane, IWL, Filtration Canterbury, WildRose, Dimension, Electraserve.

How will your design help me reach my goals?

Figuring out what you want to achieve and who you are talking to is all part of the design process.

How long will it take to design my website?

Most websites range from 2-4 weeks

How closely will you work with our company?

Origin will partner with you and your company to ensure the best possible result right through the design process.

How will we communicate during the design process?

From an initial meeting to site visits and various phone calls and emails, Origin will stay in touch every step of the way.



P 027 349 7462
E info@origindesign.nz
origindesign.nz



Robbie Hill

Solicitor at Gresson Dorman & Co.

I am a Solicitor with Gresson Dorman & Co working in their experienced property and commercial law team. I have a particular interest in guiding clients through the real estate buying and selling process

The rapid growth of the New Zealand housing market in recent years has prompted numerous New Zealanders to consider relocating. Whether you are a growing family looking to upsize or retired and looking to downsize, the thought of buying and selling property can be intimidating.

Where do I start?

The first step is deciding the order you are going to buy and sell. When making this decision we recommend that you think about the following:

Selling first

The main benefit of selling your property first is that you will know what funds you have available to purchase your new home. Although this may be less relevant for those downsizing, by agreeing to sell your property first, your offer on the next property will be more attractive due to the finance you have available.

However, by agreeing to sell your home first, there is the risk that you don't find a suitable home before you have agreed to move out!

Buying first

Sometimes the decision to relocate is made for you when you notice your dream house has been listed for sale. In this situation you will want your offer to purchase to be conditional on either the sale of your current property or you arranging bridging finance. Just note that your offer may be less attractive to the vendor as a result and may require a slightly higher offer.

Working with a solicitor

Regardless of which option you choose, we recommend that you seek advice from a solicitor to ensure your interests are protected before you sign an agreement. For most people agreeing to buy and sell property simultaneously the agreements will need to be interdependent and drafted so that the timeframes work around your life plans.



03 687 8004
www.gressons.co.nz



Roger Carter

Carter Valuations Ltd

I have been a registered property valuer since the late 1970s and have been working in South Canterbury since 1996.

Andrew Hogg has been in our practice for more than 10 years and compliments Roger in the scope of work completed.

What services do you offer?

We cover all types of valuations being residential, industrial, commercial, rural and investment properties. We operate in South Canterbury, North Otago and the Mackenzie District. We are approved by all lenders and have been working with them for many years along with an excellent working relationship with local real estate agents, accountants, solicitors and trust companies.

How much experience do you have?

Roger has been practicing as a valuer since 1977 and valuing in South Canterbury since 1996. Roger completes a lot of Commercial / Industrial valuation work along with residential valuations. Andrew has practiced elsewhere since 1985 and has been working as a valuer in South Canterbury since 1993. Andrew is a rural valuer and completes residential, lifestyle and rural valuation work.

The Process

We are asked to provide a valuation for a number of reasons. We always inspect the property taking notes and photos, returning to the office, undertaking research and then putting together the valuation report. There are generally time frames we have to meet.

Professionalism

We are the longest established valuation practice in South Canterbury and with two valuers we provide a quality service. Our offices are well located and there is client parking and easy access.



100 Le Cren Street, Timaru | Ph 03 684 6503
www.carterco.co.nz



Too often the last round really is the last round





words: Karen Low



Outline Clothing Geraldine



Outline Clothing is one of South Canterbury's one of NZ's freshest cutting edge fashion shops located in the heart of Geraldine, South Canterbury.

Sarah purchased the already established Outline Clothing in Geraldine in April 2022.

The location and timing were perfect for Sarah to launch a new business venture.

Sarah had a life outside of retail before taking over Outline Clothing. Her initial venture was into hairdressing, where she not only qualified but also had a dedicated customer base, and Sarah not only enjoyed the work but also the relationship and banter with her clientele.

For the last 27 years Sarah has been immersed in the day to day administration of an agricultural contracting business in and

around South Canterbury, alongside bringing up 3 daughters. The years spent in a high pressure sole charge administrative position gave Sarah a very good head for numbers and the ability for making critical, time sensitive decisions.

When Sarah had spare time to herself, she would (like many of us) browse the latest fashions online or when she had time to visit, take stock of what she liked and didn't like about them, including price points, quality and of course fashion labels and trends.

Her vision was to bring cutting-edge style to regional New Zealand that was previously reserved for larger cities and online.

Sarah owns a fashion boutique because of the love of fashion; she loves educating women on how to dress to their personality and shape. It's rare to find exceptional customer service, especially

these days, and Sarah and her team deliver every time. Women come back for the whole experience. That's what Sarah loves about her retail shop.

Since opening she has had an incredible response from the local ladies in the short time she has been in business, and the growing foot traffic of tourists visiting the area bodes well for continued success.

Outline Clothing is a boutique fashion shop that specialises in designer everyday wear for women of all ages. Her brands are carefully selected based on superior quality and current fashion trends. To name a few, her collection includes designers such as Zoe Kratzmann, Sills, BLAK, Humidity, Italian Star, Maggie, and One Teaspoon.

Being a boutique fashion store, Sarah prioritises customer service along with quality fashion.

In addition to her shop, Sarah has created an online store to complement her business, as well as a social media page that is updated daily with new products.

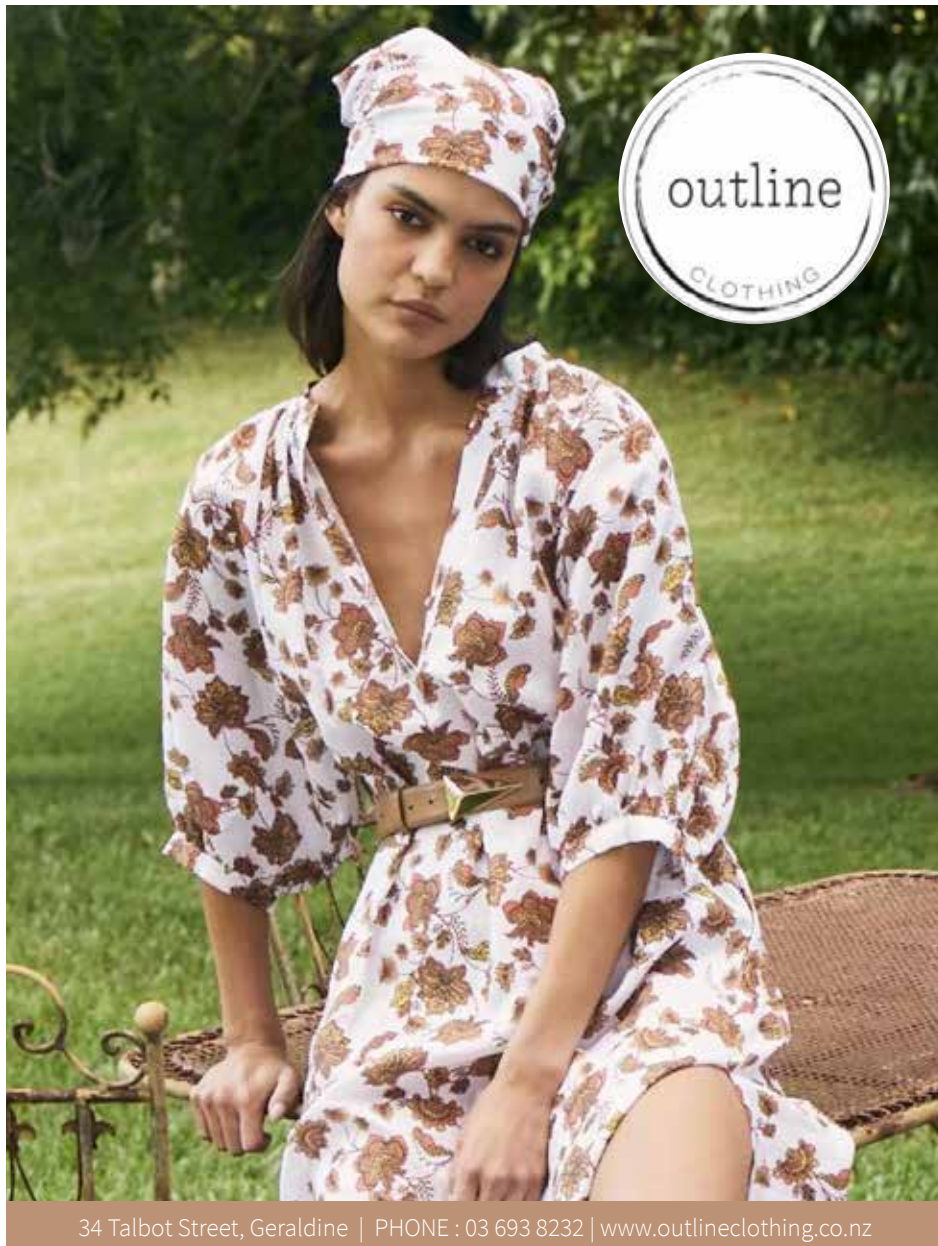
Each day is hectic, there is never a dull moment. Sarah directs all and every aspect involved in her business. For example Monday mornings are photo shoots. Soon after, Sarah is back at the shop where she will edit the images and schedules her Social Media with new arrivals.

Together with her SEO Specialist they create blogs and optimise the website www.outlineclothing.co.nz and now venturing into Google Ad Campaigns, a facet of the business that takes time but is essential for the growth of the business.

Online Shopping has its place and is the perfect option for women who have limited time to visit the store. Everything in the store is also available online.



Outline Clothing is located in the centre of Geraldine's Shopping Precinct at 34 Talbot Street, Geraldine, or discover Outline Clothing's latest collections and shop online at outlineclothing.co.nz



34 Talbot Street, Geraldine | PHONE : 03 693 8232 | www.outlineclothing.co.nz

DESIGNED FOR COMFORT
shop our **SHORTS** for summer

Clothing for men & suit hire

285 Stafford St, Timaru.
Ph 03 688 4880
www.macshaw.co.nz

REWIND

Specialising in affordable, preloved labelled clothing
75 Queen Street, Waimate
FB and Instagram @rewindshopnz

CLOSING DOWN SALE

20% - 60% off all stock

Great time to shop for Christmas

The Accessory Shop

268 Stafford St, Timaru
www.accessoryshop.co.nz
Ph (03) 684 5220

AnneEtValentin \$799
Bellinger \$499
CZone \$499
LaFont \$599
Oakley \$349
TitanFlex \$549

CANON STREET OPTOMETRISTS
26 Canon Street, Timaru
Ph (03) 688 9791

PQ Collection Gingham Dress
Luna Sky Dress
Pomodoro Top
Pomodoro Pant

AMANDA'S ADDRESS
29 Queen Street, Waimate • 027 467 0064
www.amandasaddress.co.nz

Get set for a **SIZZLING SUMMER**

Huge range of BBQ's to meet your style, budget and outdoor dining requirements.



Find your perfect BBQ at **Mitre 10 MEGA**

Barbecuing has come a long way in recent years, from the humble sausage in bread to creating a gourmet feast, our kiwi summers just wouldn't be the same without it. At Mitre 10 we have you covered with the best brands and a massive range of BBQ's and accessories, with something to suit the needs, lifestyle and budget of every outdoor chef.



**Big Range,
Low Price,
Local Advice**

TIMARU MITRE 10 MEGA
23 Bank Street, Timaru PHONE 03 687 3033

DANMARTON MITRE 10 MEGA
Dun Street, Danmarm PHONE 03 434 9660

ASHBURTON MITRE 10 MEGA
West Street, Ashburton PHONE 03 308 5119

**MITRE 10
MEGA**