

essence

essentially...south canterbury



15 Home & Garden
Transformation
in Totara Valley

6 History
Timaru
Wrecks

SHOP THE LOOK

Love Shopping? Our region has some superb stores, offering all sorts of unique items to generate interest and conversation. From standout trinkets to staple pieces, rugs, lamps, cushions, vases and artwork! You name it, it can be found somewhere near you.

MAREE HYNES INTERIORS @ HARLAU

Design, Dine, Shop, Relax Experience Harlau

Complete your new home with furniture, throws, cushions, homewares, or anything that you love from our interior design store.



Resin double card case \$99



Velvet Pear cushions \$129



Wooden cured bowls \$469



Art Deco Bar Tool Set \$119



Linen cushion \$125



Broste Hammered Jug \$95



3 in 1 classic game set \$119



Brass Bird \$39



Brass decorative bowl \$175

Open 7 days
253 Beaconsfield Road, Timaru
03 686 6784 | www.mareehynesinteriors.co.nz

Equine Mementos



Framed Rosette and Shoe

Equine Mementos creates a range of horsehair mementos, making sentimental objects for customers to memorialise beloved equine friends.

From beautiful horsehair rosettes to sterling silver pendants, there is something for everyone.

New products to be launched over winter



Horsehair Stockpin



Eternity Circle Pendant



Large Hole Horsehair Bead



Stirrup Pendant and Chain



Cufflinks



Horsehair Brooch

A Finalist in the 2023 Business Excellence Awards and Runner up for People's Choice Award.
www.equinemementos.co.nz

Tievoli Trading

Homewares, Garden Art & Lifestyle Store








72 - 76 Talbot Street, Geraldine (old Barker's Shop)
Phone 0274 313 362 or visit us on Facebook

contents

As winter comes many of us spend more evenings at home. So it feels like the perfect time to bring you our Buy and Build feature where we take a look at all things home related - from building your dream home to cosying up your space with soft furnishings. There are so many wonderful local businesses that can help you with all aspects of your home project - check out our feature on page 14.

Staying with homes we also bring you the story of a couple who converted a church in the Totara Valley to a home. A big project, perhaps inspired by watching a few too many episodes of Grand Designs they said when we spoke to them. But the end result is spectacular. Read the full story on page 16.

Also in this issue - tales of Timaru shipwrecks, tips for getting winter ready, fashion faves and all things local. And in between all this we've also moved offices. Well I say we, but really it was Dorothy and the moving guys that did all the hard work - thank you! We had the excuse of print day coming up which means we dodged the packing boxes. As always we have loved putting the magazine together - we hope you love reading it.

The Essence Team

contact us:
Dorothy McLennan - Publisher
 dorothy@essencemagazine.co.nz
 Ph: 0274 507 532
Pattie Pegler - Editor
 pattie@essencemagazine.co.nz
Larnya Bourdot - Graphic Designer
 larnya@essencemagazine.co.nz
Belinda Boyd - Sales Support Coordinator
 belinda@essencemagazine.co.nz

Published by **Essence South Canterbury Ltd**
 Opinions expressed in Essence Magazine are not necessarily those of Essence South Canterbury Ltd. No responsibility is accepted for unsolicited material. No material may be reproduced without prior written permission of the publisher.

19 Church Street, Timaru, South Canterbury | www.essencemagazine.co.nz



Front Cover: image supplied by Mac Shaw shows men's NOEXCESS puffer jacket.

DESIGN, WEB, SEO & ONLINE MARKETING

Great ideas start here

ORIGIN

03 688 4068
www.spfcreative.co.nz
www.spfwebsites.co.nz

website & graphic design
logos/branding/stationery
responsive mobile development
e-commerce solutions
digital-marketing
search engine optimisation
app development
social media
photography
brand strategy
website & email hosting

P 027 349 7462
E info@origindesign.nz
origindesign.nz

Artma Spiritual Gallery Crystals

Royal Arcade Timaru 686 9878

MADAM MAT Mat Binding Specialist

Located in the Peter Herron Building
17 Butler St Timaru
03 688 3876
027 476 3593

Shop Hours
Tuesday - Thursday
12 noon - 4pm

Leave Travel to the Experts

Timaru-based Travel Specialist, Selese Rowe, always recommends clients book as far in advance as they can. Why? There is, she says, simply better availability - it means there's more choice of hotels, flights and sometimes cheaper pricing. But surely some people have last minute requests?



"Well the quickest turnaround I have done on a booking was for a client last year who wanted to see the Rugby World Cup. I got him there the next day," she says with a laugh. So it seems she can work the odd miracle too.

Selese's love of travel began as a child when her father would send her postcards from far flung places. Now, having visited over 40 countries and worked in the travel industry for 30 years - she is making sure her customers benefit. She knows the right accommodation to book for a view of the Eiffel Tower, how long you need to make your connecting flight and how to make the most out of that first OE trip with Contiki.

Not only do customers get to skip all that trawling the web for hotels and reading Google reviews but they also get peace of mind when they make their travel plans with Selese.

They know if their flights get rescheduled when they're in Rome or their hire car isn't available in Las Vegas - they've got someone to call, not just a nameless, faceless website to deal with or hours on hold to an airline call centre.

Over the last year Selese has been booking travel for customers of all ages to all kinds of destinations. "Europe is always one of the dream holiday destinations," she says. "River cruises are popular. But I have also been doing lots of bookings for the US, Asia, Vietnam and South Africa at the moment."

So whether you want to book your first big OE Contiki trip to Europe or your dream River Cruise through Europe's Waterways to Budapest... e-mail Selese today!

Selese Rowe | 027 233 6396 | selese.rowe@travelmanagers.co.nz

contiki TRAVEL TOGETHER.

travel managers Where your travel experience begins

AUSSIE SPECIALIST PREMIER

Explore France Connoisseur

contiki

Driving Miss Daisy

Karyn Geary is the proud owner of the Driving Miss Daisy Timaru franchise. She is committed to helping clients get out and about, so they can live life to the full.

This reliable service is for everybody, whether you cannot drive, choose not to drive or no longer drive. It's about helping people maintain, or regain, their independence. They provide a professional and flexible service, catering to specific needs and requirements.

Driving Miss Daisy is a pre-booked, pre-quoted service.

To make a booking or discuss your requirements, call Karyn today. Phone: 06 683 1073 / 021 503 398.



Driving Miss Daisy Timaru

NZ's number one companion driving service. We can drive and accompany you to:

- Medical and personal appointments
- Grocery or shopping trips
- Companionship outings
- Family/social occasions
- Wheelchair accessible vehicle available

Total Mobility Scheme cards accepted. ACC contracted supplier.

To make a booking call Karyn today:
Ph: 03 683 1073 Mob: 021 503 398
timaru@drivingmissdaisy.co.nz

Driving Miss Daisy With Three Plus You

The Ringmakers
Manufacturers of Fine Jewellery

270 Stafford Street, Timaru
03 688 1362
www.theringmakers.co.nz

OBAKU DENMARK

South Canterbury REMOVALS

Looking for movers you can trust?

With over 16 years experience packing and moving furniture, South Canterbury Removals is committed to providing a quality service at an affordable price.

Call Shane anytime for a free, no obligation quote.
021 081 08171 | info@southcanterburyremovals.co.nz

"The essence team recently used South Canterbury Removals for their office move. Turned up when they said they would, were very professional and easy to deal with. They also went above and beyond the moving brief which we really appreciated. We would highly recommend them for your next move."



A Fresh Start at the Town & Country Club

The Town & Country Club has long been the place to catch up with friends and family in Timaru. But whilst the club might well have been around for the long time - it's certainly not standing still when it comes to what it can offer customers. A recent revamp of the catering team is seeing some exciting new dishes on offer says General Manager, Vince Gardner.



Much of this is down to the new chef, Riccardo Pellizeri, who has been recently recruited to head up the kitchen. As the name suggests, head chef Riccardo has Italian heritage, plus a broad and varied range of experience as a chef. He started out his career as a chef for the Australian Air Force



and has worked for hospitality venues large and small both in New Zealand and overseas. Now he's bringing his superb skills to Timaru.

Riccardo is supported by two other new additions to the kitchen team - Dwayne Wakefield-Cullan who is the sous chef and Trevor Cullan who has become the third chef.

Together this experienced and enthusiastic kitchen team are trying out new dishes and working out new, crowd-pleasing menus at the club. So visitors will currently find lots of interesting specials to choose from winter warmers like lamb shanks to pasta dishes, and fish and seafood - such as scallops in a mornay sauce or pan-fried John Dory. The most popular dishes will then be put on the permanent menu.

There's also a strong focus on providing really good family, friendly meals and as part of this the club will be running some promotions. In the months ahead these include special deals on certain dishes for children on a weeknight and also a colouring competition to keep littlies entertained.

In the kitchen Riccardo believes in catering from scratch. That means lots of homemade



goods rather than bulk bought, ready made items. From sauces and gravy to desserts and baked goods - Riccardo is making sure all these are made on-site.

Whilst customers can now expect plenty of new specials to try out they can also be assured that some popular favourites will be staying. One of these is the roast dinner option served carvery style says Vince - with roast meats including pork and beef, vegetables and trimmings like roast potatoes. A firm favourite with customers - this will be staying on the menu.

So head along to the club and check out all the delicious dishes on offer.

Lunch: 12 midday - 2pm; Dinner 5pm to 8.30pm; Snack menu available



Phone 03 688 0025

99 Douglas Street, Timaru | www.timarclub.co.nz

Opening of Copeland Ashcroft

Boutique workplace law practice, Copeland Ashcroft, recently held an opening evening at their offices in Timaru's Stafford Street. This is the newest branch of their fast-growing practice which has offices in several locations across the country. The Timaru office will be headed up by senior associate, Lauren Archer. Partners, staff and many Timaru business people attended this event to help christen the new office space.



Nils Macfarlane and Lauren Archer | Nigel Bowen and Janet Copeland | Steve Rackstraw and Carolyn Cooper



Christie McGregor, Mandy and Kerri Rayner | Kate Ashcroft, James Meager and Nigel Bowen



Hannah Goddard-Coles, Britney Bowie and Jana Greenfield | Naomih McAllister and Pat Currie | Casey Belworthy, Lauren Archer and Sally Robertson

CANON STREET OPTOMETRISTS where vision never goes out of style



26 Canon Street, Timaru info@canonstreet.co.nz
03 688 9791 www.canonstreetoptometrists.co.nz

New Law Firm Opens in Timaru

Law firm Copeland Ashcroft have recently opened their new offices in Timaru headed up by Senior Associate, Lauren Archer. She will be supported by Executive Administrator, Amy Rayner.

Originally from Invercargill, Lauren has many years of experience as a lawyer. She has been living and practicing law in Timaru for several years now and loves the town and community. She is looking forward to the challenge of heading up this new team. What will Copeland Ashcroft bring to the legal landscape of the town?

"We are workplace lawyers," replies Lauren without hesitation. **So, the focus will be on helping employees and businesses large and small with employment law. This can cover a wide range of issues - from ensuring a business has the correct procedures and documentation in place including for matters involving restructuring, disciplinary issues, and personal grievances.**

Other areas which Copeland Ashcroft can assist with are immigration and health and safety. This can include acting for employers to assist their employees to obtain the correct working visas, providing immigration advice and assisting a company to carry out a health and safety audit of their business.

For Lauren the variety and scope of employment law is both rewarding and enjoyable. "I particularly enjoy the personable aspect of employment law and being able to assist my clients to obtain quick and sensible outcomes," she says.

Lauren explains that Copeland Ashcroft commonly see employers caught out by recent changes in the employment, health and safety and immigration areas.

For example, there are recent immigration changes including new compliance requirements that can suspend or revoke employer accreditation, and infringement offences that can be raised against any employer that employs migrant workers.

If you've got a workplace issue whether it's an employment matter, navigating health and safety regulations or addressing immigration concerns, get in touch with Lauren for expert guidance and support.



www.copelandashcroft.co.nz
Level 2, Oxford Building, 148-152 Stafford St, Timaru
M: 021 02413 123
E: Lauren.Archer@copelandashcroft.co.nz

Copeland Ashcroft
WORKPLACE LAWYERS

Designed with you, handmade in our workshop



No two snowflakes are the same and nor do items of jewellery need to be; when working with an experienced jeweller to create bespoke pieces from scratch, jewellery can be tailored to fit your personality and style so that it is truly a reflection of you.



Our workshop team has a combined experience of over 80 years in the jewellery industry, allowing us to offer highly personalised guidance and excellent craftsmanship. The workshop is always humming with activity, the jewellers are busy with repairs and making stock for our retail space downstairs. A lot of their time is also devoted to making pieces commissioned by customers from South Canterbury and beyond.

Come and see our friendly team for an obligation-free consultation today!

How do I commission a ring?

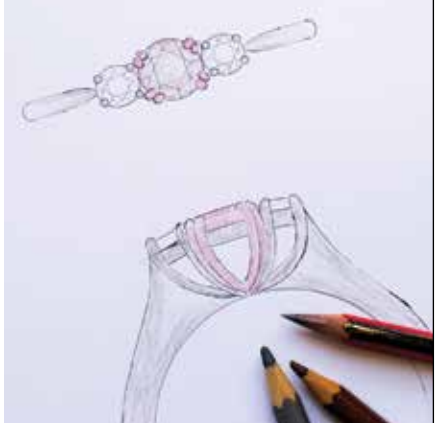
When you commission work at The Ringmakers, the whole process is completed on site. Typically, an initial consultation will establish some key elements of design that appeal to you, including potential stone choices, and set some parameters for price/timeframe for manufacture.

Next, designs are drawn up and viewed at a subsequent consultation, with further refinement of designs as necessary. At this point, an assortment of stones may be ordered to compare and contrast, and a selection made after viewing.

Often, the final stage is the actual handmaking of the item, stone-setting and finishing. Sometimes, early in this final phase, parts can be put together temporarily in their unfinished state and checked in one last consultation so that any minor adjustments can be made to ensure maximum wearability.



Consultation sketch



The Ringmakers
Manufacturers of Fine Jewellery

Call us today 03 688 1362

270 Stafford Street, Timaru www.theringmakers.co.nz



Timaru Wrecks

WORDS: PATTIE PEGLER | IMAGES: SUPPLIED

Walk on the sandy beach of Caroline Bay on a clear blue sky day and it's hard to imagine the turbulent history of the seas in Timaru. But this stretch of the South Canterbury coast has claimed plenty of ships.

It was as the town grew in the late 1800s that the problem became particularly prominent. Trade had started to build up around the coast – bringing goods in and taking goods out – everything from wheat to wool, tea, sugar and other supplies. As there was no harbour for the large ships and they couldn't come in close to shore – there was “a landing service” – this basically meant that small boats were run down a slipway then rowed or hauled out to ships anchored offshore.

In 1866 the schooner (a ship with two masts), Prince Consort, was washed over a rock reef and capsized – she had arrived from Lyttelton with around 60 tons of cargo, which was unloaded at Timaru. The captain was then awaiting instructions from the owners as to where to take the ship next – but during that time a stiff wind started to blow and there was a ‘good deal of surf running on the beach’ according to newspaper reports at the time. The ship started to get blown in towards shore and whilst a second anchor was dropped “being closer into shore she was more exposed to the breakers” and later that afternoon she capsized when hit by a wave.

It was an incident that generated plenty of news articles in the local papers but there were many more shipwrecks to follow over the years. A book titled The Port of Timaru 1852 – 1995 records many of these but saves special attention for 1882.



The ship started to get blown in towards shore and whilst a second anchor was dropped “being closer into shore she was more exposed to the breakers” and later that afternoon she capsized when hit by a wave.

“Then came the gloomiest year of all. Within a space of four months, four vessels of considerable size went shore and nine lives were lost.”

The City of Cashmere drifted on to Ninety Mile Beach and whilst the ship was a total loss the cargo was all salvaged. Part of the keel was brought to town and used as shop front.

The Duke of Sutherland, a wooden barque (a ship with three or more masts) carrying a cargo of wheat, sprang a leak after bumping the bottom of the ship and sank.

The ships Benvenue and City of Perth both ran aground and were wrecked on the same day.

On the 22nd May 1882 the South Canterbury Times carried a notice of an auction ‘on the Beach’ - items listed for sale

included the ‘Hull of ship Benvenue, Anchors, Chains, Coals, Ship’s Stores, Sundries &c.’

“Timaru has been saddened by one of the most terrible shipping disasters the port has experienced,” recounts an article titled Wrecks and Loss of Life At Timaru - shortly afterwards in the Ashburton Guardian.

If you’d like to find out more about those early shipwrecks in Timaru then if you’re in town, visit the South Canterbury Museum where you’ll find some excellent information on the subject. Their display includes Benvenue rescue award medals, items from the Elginshire wrecked on the Normanby coast in 1892, and a digital touchscreen of local shipwreck images and information.

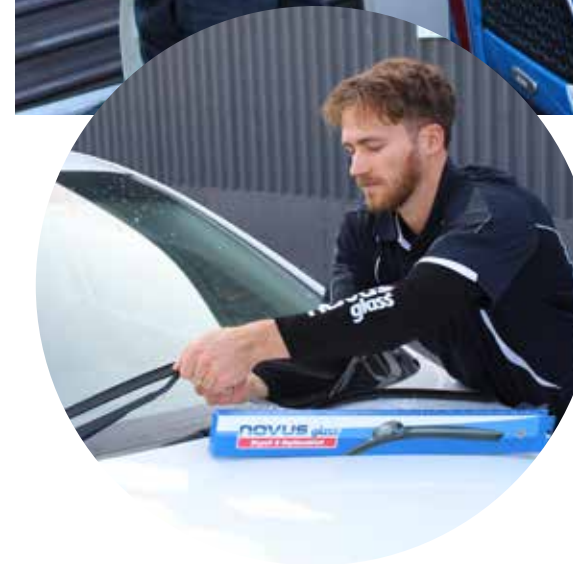
Get Your Vehicle Winter Ready



With Jack Frost paying regular visits, now's the time to get your windscreen, wipers and headlights checked with the team at NOVUS Glass South Canterbury. That's the message from the franchise's new owner Ben Ryland.

“Coming in to winter we see an increase in cracked screens from unrepaired chips. When chips aren't covered, water gets into them and, over winter, the water freezes and splits the screen. Chips that haven't been repaired can also crack when defrosting your screen due to the rapid changes in temperature.”

Ben's seen both occurrences happen numerous times in his 13 years in the industry and says the key is prevention.



“Here at NOVUS Glass South Canterbury we are committed to the NOVUS vision of a greener tomorrow. We help achieve this by providing preventative maintenance, rather than just replacing screens once they are broken.”

This goes for businesses with large vehicle fleets too. “For businesses with vehicle fleets we offer free fleet inspections,” explains Ben. “We come to your yard, check the screen and wipers for free, and advise of what repairs are needed, if any. We can then repair chips and replace wipers there and then, either through your insurance or with the setup of a NOVUS account.”

With screen inspections, a full range of wipers including the new NOVUS flexi blades range, headlight polishing and replacement cabin filters,

NOVUS Glass South Canterbury is your one-stop-shop for preparing your vehicle for winter.

Whilst he's only been at the helm of Novus South Canterbury since March, Ben has been with the business, working under previous owners Dianne and Roger Patterson, for the past four years.

Ben started his automotive glazing career back in 2011 before completing his BCITO apprenticeship and moving to Timaru in 2015. He joined NOVUS Glass South Canterbury in 2020 with a view to eventually buy into the business.

“However, after studying business management and being supported in my growing role by Dianne and Roger, my wife Leoma and I decided to buy the business outright and make our mark.”

Including Dianne and Roger who are still contributing part-time and assisting with training and hand-over, Ben and Leoma have an exceptional team of seven including Ben's father Phil (who has a background in engineering and automotive manufacturing), and his brother-in-law Jarrett, as well as technician Matt, and Esme and Jo in customer service.

So whether you're due to have your screen chips repaired, wipers replaced or upgraded, headlights polished or cabin filters replaced, NOVUS Glass South Canterbury have mobile technicians and a workshop at 7 Bank Street Timaru ready for your pre-winter booking.

Give Ben and the team a call today on 03 684 8940.



EXPLORE

Perth Street
Downtown Timaru
Open: Tues-Fri 10am - 4:30pm
Sat-Sun 1pm - 4:30pm
FREE ADMISSION

SOUTH CANTERBURY MUSEUM
EXPLORE our heritage

NATURE HISTORY CULTURE

Find us on: **facebook.**

TIMARU DISTRICT COUNCIL
The Kaitiaki & Kaitiaki
of the Te Anau Maru

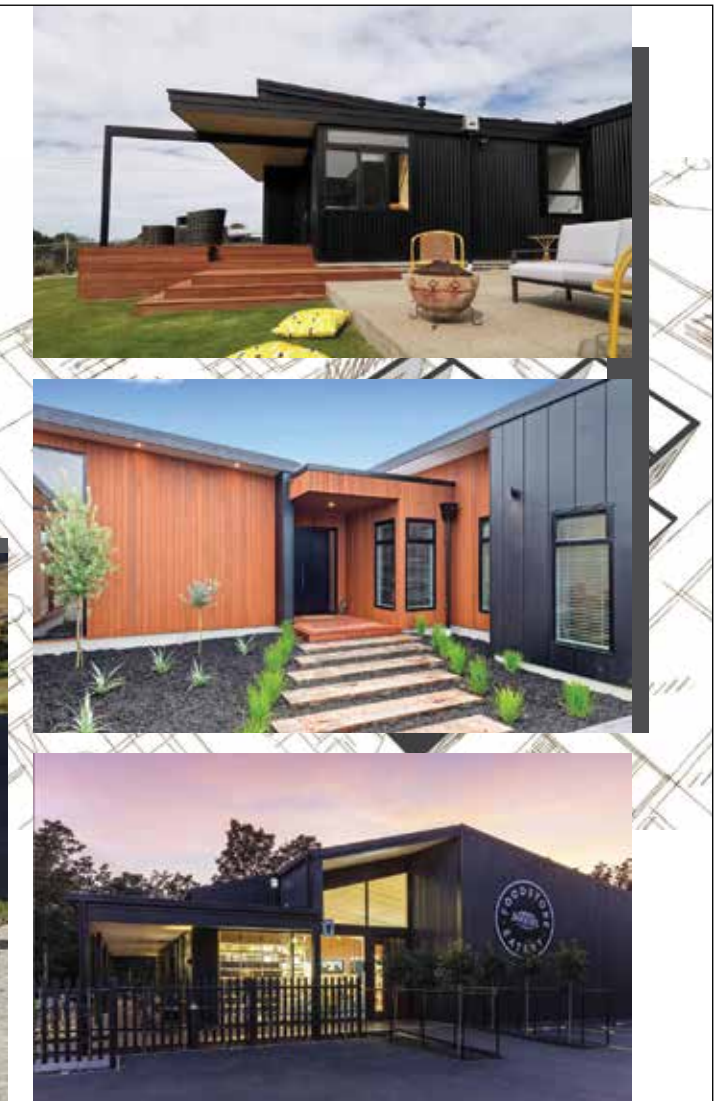


The art of living

At NB Architects we aim to capture the imagination of our clients by creating enjoyable living, or working spaces, that have meaning, depth and that last the test of time.



03 684 7918
nbarchitects.co.nz



Winter is Coming Are You Ready?



Get Your Household/Work/School/Marae Ready

Winter brings crisp mornings and gloriously sunny days. It can also send us southerly blasts and intense rainstorms with winds that can knock you off your feet.

So when the worst weather strikes can you honestly say you are up to the challenge of keeping you and your family safe? There are so many things you can do ahead of a disaster or just a very intense cold-snap that can keep you all safe, warm and not require emergency services to come to your aid. Many of these things are listed in the below Winter Cheat Sheet so please cut it out and pop it on your fridge as a reminder.

If you become isolated due to the weather or flooding then expect to be on your own for some days. In a bigger Civil Defence emergency, such as the Alpine Fault Magnitude 8 (AF8) event, it is highly likely that those responding may also be personally affected. In the Christchurch earthquakes over 70% of the responders had trauma of their own to deal with first.

If you would like to know what known hazards may affect your home or neighbourhood then you can check out hazards information on the Environment Canterbury and Timaru District Council websites.

You can ask at the museum and library for historic information on previous floods and other disasters.

Think about signing up to Neighbourhood Support where neighbours look after each other and reduce the strain on emergency services in a disaster. The segment of our population over 50 is increasing, as is the number of people living on their own or away from family and our community is growing in diversity as well. All reasons to create great bonds with neighbours who may value the contact and the assistance in a disaster.

Connect with church groups, service agencies and community groups that have their own networks that can be useful to stay in touch and help each other and often the wider community. Get your kids involved in volunteering for agencies like St John, Red Cross and Scouting NZ as it helps them support you and sets them up well for the future.

If you have spare time, desire some personal growth and would like to help others then consider becoming a volunteer. Volunteering Mid & South Canterbury would be a great place to start.

Winter genuinely gives us all the opportunity to reconnect with family, friends and neighbours, take stock of our emergency plans and supplies and ensure we are all able to continue with life as summer approaches.

Websites with further information:

- www.timaru.govt.nz/home
- www.ecan.govt.nz/
- www.cdemcanterbury.govt.nz/
- www.getready.govt.nz/en/
- www.vmsc.org.nz/
- www.southcanterbury.getsready.net/

Stay Safe During Power Outages

Don't be left in the dark during a power outage. Weather winter with these essential tips.



1 Stay Prepared: Create an emergency kit with flashlights, batteries, non-perishable food, water, blankets, and a first aid kit.



2 Know your needs: If you rely on electricity to power a medical device, chat to your medical provider and your electricity retailer about an emergency plan today.



3 Stay safe around downed power lines by keeping your distance and treating them as live. Never underestimate their danger and avoid any contact.



4 Stay Calm: Power outages can be unsettling but remember to stay calm and reassure your family members. Take a moment to check on vulnerable or elderly neighbours.



5 Use Alternative Light Sources: Keep a battery powered torch handy to light your surroundings safely. Candles are a fire hazard.



6 Manage Food Safety: Keep refrigerator and freezer doors closed to preserve perishable items. Consume refrigerated food first and use non-perishable food during extended outages.



7 Avoid Carbon Monoxide (CO) Hazards: If using a generator, place it outside in a well-ventilated area away from windows, doors, and vents to prevent CO build-up.



8 Stay Informed: Follow us on Facebook or visit our website for updates and outage information. Listen to battery-powered radios for news updates.



9 Report Outages: Contact our 24/7 helpline on 0800 66 11 77 to report outages or any safety concerns. We are here to help.



Winter cheat sheet for Staying Safe

Winter is time to hunker down, read a good book and think about what might need planting in the spring. It's also an opportunity to check a few things at home before we have the first heavy snowfall or lose power in the midst of a cold snap. Some useful things to do would be:

Cut this out and put on your fridge

- Restock your emergency kits, checking use-by and expiry dates on food and medical supplies.
- Replace batteries in radios and torches and remember the local radio station is used for issuing warning messages by some organisations.
- Ensure you are able to stay warm in your home without power.
- If you rely on power for medical reasons then make sure you and your support network have a back-up plan.
- If you are totally reliant on power for heating and cooking then get to know your neighbours better through the Neighbourhood Support network as they may be able to help you, especially if you don't have family or friends close by.
- If you have a BBQ you can use for cooking remember it must be used outside and check your gas bottle is full after it has been used all summer.
- Check you have food, water and medical supplies for everyone in your home for more than 5 days and food for your companion animals.
- Check that your phone is set up to receive Emergency Mobile Alerts from the National Emergency Management Agency (NEMA).
- Check if you have some other way of charging your cellphone, such as a car charger or portable battery charger.
- Check you know who to ring for help if you can't get out of your home – make those arrangements before you need to do it. This is especially important if you become ill and need help.
- If travelling through inland passes make sure you have snow chains and carry emergency supplies such as warm coats, a first aid kit, sleeping bags, food and water for an overnight stay in the car.
- Check weather forecasts and road closure notices regularly and avoid travelling if very cold or dodgy weather is predicted. Better to sit out a storm at home than put other people's lives at risk being rescued.
- Have some cash on hand as a power cut will also mean money machines won't work.
- Check external water pipes are lagged, wet concrete paths are gritted and your hot water cylinder is secured to the wall.
- Clean out gutters and blocked drains so water doesn't pool and flood or freeze over.



03 687 7200 (24/7 for emergency contact)



Contact us

Please contact us on 0800 66 11 77 or email mailbox@alpineenergy.co.nz. For more information visit www.alpineenergy.co.nz/customers/outages/outage-preparedness

We are a member of the Utilities Disputes (UD) scheme, you can contact UD for resolving complaints, a free and independent service, on 0800 22 33 40 or www.udl.co.nz



Warehouse Liquor

Four Pillars Rare Dry Gin.
A truly modern take on the classic Dry Gin, Four Pillars Rare Dry Gin has a lot of bright, clear botanical character. It's smooth and spicy, combining Asian botanicals with Mediterranean citrus and Australian lemon myrtle.

A delicious founding Gin from Four Pillars, this Rare Dry Gin continues to collect accolades, having won Gold medals at major international spirits events every year since 2014.

SIGNATURE SERVE - Let it shine by pairing with East Imperial Tonic Water and a slice of fresh orange.

35 Browne St, Timaru
03 688 1012
www.warehouseliquor.co.nz



Lemon Posset

Now that lemons are back on the menu we can enjoy our favourite lemon posset.

Serve these easy to make desserts at your next dinner party - your guests will love them.

Ingredients

- 600 ml of cream
- 145g of caster sugar
- 100ml of lemon juice
- Lemon rind of one lemon

Method

- Mix the cream and sugar and lemon rind together in a saucepan until the sugar is melted.
- Bring the mixture to the boil, then turn down to a simmer for 6 minutes.
- Remove from the heat and mix in the lemon juice.
- Strain through a fine sieve into a heatproof pouring jug, and then divide evenly between eight fancy glasses.
- Chill until set.
- Garnished with a slice of lemon and a mint or lime leaf.



Koji Teppanyaki & Grill

Located in central Timaru, Koji serve a wide range of Japanese food and entertainment on a Japanese grill.

The menu boasts a variety of dishes, including Miso soup, Squid Katsu, Beef Tataki, and Karaage Chicken. They also have a buffet option, where diners can choose up to 15 dishes per round.

Koji serves lunch, dinner and drinks, and can cater for groups or parties. Outdoor seating is provided, walk-ins are welcome, and takeaways are available.

7 George Street, Timaru | 03 686 9166



Real Milk Timaru

If you like the idea of buying local produce, made fresh each day from the farm or delivered to your door each week that comes in a 1 litre glass reusable bottle then you should contact us for details.

Our fresh milk is unpasteurised and non-homogenised so it hasn't been processed, is completely natural and so good for you.

We are open at the farm shop 24/7 and our delivery truck delivers once a week around South Canterbury. Our shop has a viewing window so customers can watch the cows being milked at milking time.

Come down and check us out at 22 Fairview Rd Timaru or www.info@realmilktimaru.co.nz



Timaru Town & Country Club

Special Dish of the Day Pork Fillet Escalopes
Come in and try this mouth watering special. Thinly sliced Pork, Crumbed, Layered with Ham & Cheese with a creamy Tomato sauce. Served with Salad and Fries and priced at \$20.

A great selection of winter warmers available like lamb shanks to pasta dishes, and fish and seafood - something to please everyone!

99 Douglas Street, Timaru
03 688 0025
www.timaruclubs.co.nz



Makikihi Fries

NZ's MOST HONEST FRY

Indulge in Makikihi Fries - crafted from exquisite Agria potatoes harvested in Canterbury. Explore our diverse cuts, available at exclusive supermarkets, restaurants, and fish 'n' chip shops across NZ.

Proudly NZ family-owned, our gluten-free fries promise a delectable experience.

5 Makikihi Beach Rd, Makikihi Factory Shop: 57 Sonter Road, Wigram Please Call or Txt before visiting: 027 4300 948



THE OXFORD RESTAURANT

Located in the historic Oxford Building in the main street of Timaru, The Oxford is all about keeping it simple.

Opening over 11 years ago, the restaurant has an established core team who have been working together for much of this time to bring you quality and consistency.

A bistro style menu with a European & Asian influence. Rustic bold flavours that marry perfectly together. With a great wine list and beer selection to compliment any occasion. Open lunch and dinner, with a weekend brunch.

Cnr George & Stafford Street
03 688 3297 | oxford@theoxford.co.nz



Ubake Bakery

Award-winning deliciousness from your favourite bakery in Timaru!

The cabinets are full with a mouth watering selection of savoury and sweet treats. From pies, cakes, breads, filled rolls, or mini doughnut filled with custard, jam or caramel.

Make sure you try their hot cross buns that won Best Hot Cross Buns award 2018, yum! Order some fresh baked goodness today. Get your order in before 3pm, and we'll have it ready for you to pick up the next day!

188 Hilton Highway, Washdyke
03 688 7447



For the Men

9ct White Gold and Shukedo Mokume Gane Cuff Links \$595
JewelCraft

Great Selection of Suits
Mac Shaw

Cutler Co Hastin Trousers Latte \$189.90
Mac Shaw

Florsheim Premier \$239.90
The Shoe Shop

Evolve Brown Leather Bracelet 22cm \$99
JewelCraft

NOEXCESS puffa \$349.90
Mac Shaw

NO EXCESS cotton jumper \$189.90
Mac Shaw

Florsheim Rucci Chukka Brown \$249.90
The Shoe Shop

NO EXCESS Cotton Roll Top \$198.90
Mac Shaw

No Excess Half Zip Sweatshirt \$289.90
Mac Shaw

Great selection of Winter Jackets and fun Shirts
Mac Shaw

Blundstone Elastic Sided Boot Black \$359.90
The Shoe Shop

Fantastic selection of Ties
Mac Shaw

Merrill MOAB 3 \$229.90
The Shoe Shop

Stg Onyx Silver Inlay Ring \$235
JewelCraft

ARRIVED NOW...

NO EXCESS AND DSTREZZED OF HOLLAND, CUTLER, R.F. SCOTT



Truly worth touching, trying on and owning.
Also, suit hire available.

Clothing for men & suit hire

285 Stafford St, Timaru.
Ph 03 688 4880
www.macshaw.co.nz



WATERPROOF SHOES

Lightweight all-weather shoes and boots, comfortable conquering even the most treacherous city terrain



Sketchers Delson \$189.90



Caterpillar Colorado Sneaker WP Boot \$249.90



Caterpillar Deplete Waterproof Boot \$219.90



77 Sophia Street, Timaru | 03 688 4251
Free customer parking around back of the store

Ellani S/Steel Disk Drop Earrings Gold Plating \$99



Ellani S/Steel Gold Plated Drop Earrings \$66



Ellani Gold Plated Hammered Earrings \$79



9ct White Gold Diamond Tennis Bracelet 1.50ct \$4699



Workshop & Showroom
297 Stafford Street, Timaru
ph 684 4882
www.jewelcraft.co.nz



Beauty favs



Don't get the winter blues!

Come into a warm and cozy Fellow & Fox to be pampered. We have a wide range of hair and scalp treatments to keep your hair healthy and protected over the winter months.

Fellow & Fox

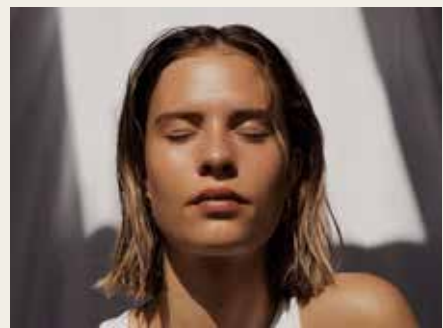
327 Stafford St, Timaru | 03 971 0991



Collagen Induction Therapy

Perfect winter treatment. Stimulate collagen. Smooth fine lines and wrinkles, reduce acne scarring, pigmentation and minimise pores.

Skin Deep Beauty & Health
50 Church St, Timaru | 03 684 8871



Skin boosting treatments before winter!

Transform your skin quality and skin radiance with injectable skin boosters. "Skin boosters" are biostimulator products that promote collagen & elastin production and add intense hydration to the skin - perfect for a boost of glow coming into the colder, dryer weather! Book with Katie at Transform Clinic Timaru or Ashburton.

Transform Clinic
03 355 1311 | @transformclinicmerivale
At Skin Deep - 50 Church St, Timaru
At Beauty Worx - 278 Tancred St

Gold Half Sovereign Coin \$1709 **JewelCraft**

Handmade Chocolate & White Diamond Ring, \$5,690 **The Ringmakers**

3 in 1 Classic Game Set \$119 **Maree Hynes Interiors**

Gardenia Coat \$299.99 **Maree Hynes Interiors**

Gloves with Pearl Trim **Tievoli Trading**

Ashley & Co Washup \$32 **Stompz**

Eos Feat Birch Boot \$289.90 **Stompz**

Woven Belt **2nd Impressions**

Broste Amber Cocktail & Martini Glass \$35 each **Maree Hynes Interiors**

Animal Print Belt **2nd Impressions**

Anne Et Valentin \$739 **Canon Street Optometrists**

Shirt and Jumper **2nd Impressions**

Platinum, Chocolate & White Diamond Ring, \$3,690 **The Ringmakers**



Tuesday Label King Blazer \$369 **Stompz**



Obaku Mark Lille Walnut, \$239 **The Ringmakers**



Trench Coat **2nd Impressions**



Daria Shirt \$159.99 **Maree Hynes Interiors**



Dref by D Desire Sweater \$165 **Stompz**



EOS Malika Ankle Boot \$339.90 **Stompz**



Pouf **Tievoli Trading**



Ede & Addison Studded Bracelet, \$125 **The Ringmakers**



Cushion \$46 **Tievoli Trading**



Outdoor Seat **Maree Hynes Interiors**



Feels like Autumn Favourite Things

Eos Lindeta Boot \$399.90

Bresley Dakтари Boot \$289.90

Briarwood Dale Denim Blue Cardigan \$259

Bresley Dakтари Boot \$289.90

Tuesday Label Dorothy Coat Olive \$599.90

Dref by D Jonquil Coat Blue Check \$515.00

Andrea Biani Hudson Loafer \$209.90

Woden Siri Black Boot \$269.90

Woden Siri Boot Silver Mink \$269.90

Zaket and Plover Ski Jumper \$169.90

EOS Linear Ankle Boot \$299.90

234 Stafford Street, Timaru | Ph (03) 684 3389 | www.stompz.co.nz | Follow us on facebook

fashion | essential

DUTZ EYEWEAR



CANON STREET OPTOMETRISTS

26 Canon Street, Timaru
Ph (03) 688 9791

If you are looking for good value preloved women's wear pop into 2nd Impression. Suzie has a real passion for fashion as you'll notice when entering her boutique, there are racks of bold colours, patterns and shapes galore, no two items are the same.



14 Royal Arcade Timaru | Ph 03 684 6438

Stolen Girlfriends Club Pop Tabs Band Ring, \$249

Georgini Rock Star Evil Eye Bracelet, \$129

Karen Walker Monogram Key Necklace, \$249

Rebel & Rose Lowneck Lapis Lazuli Ring, \$319

Pandora Rose in Bloom Curved Stud Earrings, \$119

Ice Watch Horizon, \$199.90

Citizen Promaster Marine, 'Barnacle', \$1,550

14ct White Gold Natural Diamond Studs, \$819

Pandora Bold Sparkling Star Charm, \$69

Handmade 9ct White Gold Iolite & Diamond Ring, \$2,900

UNICEF x Pandora Powerful Women Charm, \$99

Georgini Milestone Tennis Bracelet, \$329

Casio WS1300H-2A Tide Graph Watch, \$99

The Ringmakers
Manufacturers of Fine Jewellery
270 Stafford Street, Timaru | 03 688 1362 | www.theringmakers.co.nz



Creating Your Dream Home

Building or creating the perfect home can be a big project and whether you're looking at revamping your existing home or building from scratch - one key consideration is finding trusted professionals to help you on your journey. From architects to builders, interior designers to real estate professionals and electricians - we have some fantastic local businesses that can help you with your home project.

We're proud to have them here in our pages and they may just be able to help you create that dream home.

Five Websites We Love For Home Inspiration

At Essence we always enjoy looking at new home trends and inspiring websites for home projects.

1. Remodelista.com

If you're looking for general inspiration this US site is a great place to start and it really has some different angles. From artisanal Mexican bedcovers to coffee makers that will look stylish on your counter top and a shelving system inspired by Japanese architecture - they really do have all areas covered.

2. Resene.co.nz

Sure we've all heard of Resene paints but their website is an absolute treasure trove of colour ideas and advice. And if you want some fun with colours then check out their EzyPaint virtual painting tool where you can try all kinds of colour combos on walls, floors and trim.

3. Building.govt.nz

Building a house isn't just having fun with paint colours, unfortunately. So if you want some key information on the basics - this is an excellent site that gives unbiased advice. Do you need an architect? How do you choose a good, reputable builder? And what sort of things can you do yourself? You'll find all the answers here.

4. Archipro.co.nz

A great place to check out some of the most inspiring architecturally designed residential homes from city section builds to hilltop and beachside spots. A great source for ideas and inspiration if you're at the start of your home project.

5. Colorsteel.co.nz

When it comes to home exteriors, sure this is product site, but it's pretty good. You'll find inspiration for the all important roof and cladding of your home along with a moodboard tool you can use to help you think through your ideas.



Photo: Grant Davis

That feeling of honesty is also clear from the outside - it still looks like the church it was built as back in 1890. The building it has always been - but now with a different function and a new life.

WORDS: PATTIE PEGLER | IMAGES: GRANT DAVIS, MARTIN STEWART

For many embarking on renovating an old home - there are a lot of unknowns. But for Martin and Anne Stewart who took on a church conversion in Totara Valley - there were also some daunting knowns - like earthquake damage, no running water and the very considerable challenge of transforming the church into a residential building.

But it's clearly a challenge they embraced. Take a peek inside the church and it's all towering ceilings, exposed structural steel beams and beautiful tall windows where shafts of sunlight pour in. Despite it's reasonably compact footprint of just 80 square metres, there's a sense of space.

"We love the spaciousness," says Anne. But they also love the rural setting, the sense of calm and the building itself.

"There's something quite wonderful about falling asleep in a building that has had 130 years of people praying in it - it's been a place of peace," says Martin.

The couple, both Presbyterian ministers, bought the disused church in 2013 when it was up for sale. Fuelled by a long time interest in house building and probably watching "too much" Grand Designs - they were inspired to take on the church building and give it a future.

Built in 1890 the limestone church is registered with Heritage New Zealand. And over its life as a place of worship it was used for regular services, Sunday school sessions, weddings and even an annual community evening soiree. But when the Stewarts bought it - it had suffered some earthquake damage and could no longer be used.



Photo: Grant Davis

Award Winning Builders



LONE PINE BUILDING.co.nz

JASON 0274 425 294 / ANDREW 0274 287 227



We can help you with the design and building process from start to finish.

breathing new life into old bones

DESIGN & BUILD
03 308 8807
www.geoffread.co.nz
office@geoffread.co.nz
@geoffread.buildersandjoiners
193 Alford Forest Road, Ashburton

Geoff Read

BROOKland WINDOWS & DOORS

Where quality, promptness & customer satisfaction comes first...

For all your residential aluminium windows and doors

- Stacker/Sliding Doors
- Fold-back Bi-folds
- Double Glazing
- Conservatories

FREE MEASURE & QUOTE

Powered by altus Window Systems

Brookland Aluminium (2016) Ltd
88 Meadows Road, Washdyke | Ph 03 688 2667 | brook.land@xtra.co.nz



Take a peek inside the church and it's all towering ceilings, exposed structural steel beams and beautiful tall windows where shafts of sunlight pour in.



Photo: Grant Davis

From The Floor Up

With the help of an architect and some "great" builders (Geoff Read in Ashburton), they came up with a plan. But like all plans with old buildings – there had to be some flexibility.

"The plan was to keep the floorboards," says Martin. "We were trying to lift them out but there was a lot of moisture in them, they were full of bora and they just all splintered."

So the decision was made for them – the church would need a new floor. Their son Josh, who was working in landscaping, stepped up to help them prepare for a new concrete floor. A large part of the prep involved digging out where the floor had been, and Josh went down nearly metre and wheelbarrowed the dirt out through the door.

"He went pretty fast, but he was pretty broken after it," recalls Anne. The next step involved filling the cavity with over 40 tonnes of shingle and then compacting it.

Then they turned their attention to the roof. "It was the biggest area of risk," says Martin. "The ceiling was all lathe and plaster so we didn't know what was behind that. We didn't know if there would be any big beams, we hope there would. But it was a maze of small pieces of timber."

So, it came down along with over a century's worth of birds' nests, dead rats and dust.

Back to the Plan

But with the roof removed a new concrete floor was poured and the builders were able to drop into place structural steel framing which fitted perfectly. The original stonework was pretty amazing and all level says Martin. Next up a new roof was put on, the windows were replaced and the space started to come together.

"The biggest leap forward of all was changing the windows," says Anne. The previous wooden windows had been tampered with over the years, there were panes of coloured glass in old wood frames and some louvre panes had been fitted into some of them for ventilation. So they were all replaced with double-glazed, timber framed windows that are utterly sympathetic to the space.

The addition of the mezzanine has also made the most of the space, adding almost 40 square metres to the floor space – bringing the whole home to a total of 120 square metres. It contains a guest sleeping area and a home office for the couple to work.

Downstairs is the main living area, a bedroom, bathroom, laundry and pantry. The steel framing is exposed and there are only three internal doors – so when you are in the house nothing is really hidden.

Meanwhile practical elements like double-glazed



windows, a heat exchange system to keep the space warm and ventilated and a log burner – make it comfortable to live in. More so than they expected says Anne.

"We wanted the building being honest," says Martin. "We would have painted the steel out but actually it's visible, what the house is made of is right there."

That feeling of honesty is also clear from the outside – it still looks like the church it was built as back in 1890. The building it has always been – but now with a different function and a new life.

"We recognize that we'll have our season in it and other people will have their season in it too" says Anne. "We've built it to give it a future."

A Word of Advice

We asked Martin and Anne what advice they would give others embarking on an ambitious build like this. Here are their three key tips.

1. You really do need help from professionals. There are so many things we didn't know and the builders were so helpful and had worked on heritage buildings before.
2. Understand that with an old building there are a lot of unknowns. It's not simple.
3. Realise that it will cost you to get things done properly and often that money will be spent on the practical things rather than the cosmetic – the electrics, the septic tank, the things behind the walls. There are no good shortcuts.



A Storage Solution For Your Needs!

Heartland Self Storage Timaru, offers a variety of storage solutions to meet the needs of individuals, vehicle owners, and businesses.

03 684 4822

45 Washdyke Flat Road, Washdyke

www.heartlandselfstorage.co.nz

Ask us about our secure outside boat & caravan parking!

MORRIS WADDELL ELECTRICAL

'THE BOYS IN THE BLUE VANS'

03 686 2422

We are here for you from start to finish on all your building alterations

60 GLENITI ROAD | 24/7 03 686 2422

E admin@morriswaddell.co.nz
www.morriswaddellelectrical.co.nz

ARE YOU SUPPORTING
KIWI OWNED BUSINESS?

LET'S MOVE FORWARD TOGETHER

WE AT DE GROUP ARE ALL ABOUT
KIWIS SUPPORTING KIWIS

ISO 9001 – Quality Management System
www.deconsultingengineers.co.nz

ISO 17025 accreditation – Metrology & Calibration
www.decalibration.co.nz

Engineering Inspection Specialists
ISO 17020 accreditation – Inspection Body
www.surveynz.co.nz

LEORA
Curtains

At Leora Curtains we pride ourselves on creating quality curtains and blinds.

Come in and browse our extensive collection of fabrics to discover what will work in your home or business.

Give us a call to book a free measure and quote.

32 Woollcombe St, Timaru | Monday to Friday 9am - 5pm, Saturday 10am - 12pm

RESIDENTIAL NEW BUILD • RENOVATIONS • DECKS & DRIVEWAYS • RELOCATABLE

We are Registered Master Builders who specialise in 'quality' residential new builds large or small, renovations, relocatables, holiday homes. We cover all of South Canterbury and surrounding areas.

WHEELER
BUILDING

CONTACT US FOR A QUOTE Jason 027 549 9614 | www.wheelerbuilding.co.nz | [wheelerbuildingtimaru](https://www.facebook.com/wheelerbuildingtimaru)

16 May 2024 | essence

essence | May 2024 | 17



Getting Started With Chalk Paint

Why Does Everyone Love Chalk Paint?

Annie Sloan developed chalk paint to make painting, well easier. And quicker. And, honestly, that sounds like my kind of painting. Primers and sanding and preparation and double, treble coats...all those things have put me off traditional painting. With chalk paint – it is really much, much simpler. Dust the piece down, brush on some paint and there you go.

So what can you chalk paint?

Anything seems to be the answer. I've seen tables and chairs and bookshelves and cabinets and dressers and ...you get the picture. If you've got an item you want to transform – then chalk paint could well be the answer. You can even use it on outdoor furniture – although it does apparently need a bit more care and the Annie Sloan website recommends finishing off outdoor pieces with Chalk Paint™ Lacquer to protect against peeling paint caused by water damage but also against UV rays and fading colour intensity.

What do you really need?

Well the basic idea is paint. But it's easy to get carried away – there are so many accessories - books and brushes and stencils and gold leaf and all the colors you can imagine. But as a beginner, I would advise you curb your enthusiasm until you feel confident.

I started off with a tin of Duck Egg Blue, a brush and some clear wax to finish off the piece. And honestly, I was pretty pleased with the result.

In fact I was so pleased with the result I painted two more bookcases. And they've been good enough to bring out of the garage and into the house.

So if you're thinking about breathing new life into old furniture – think about chalk paint. I am a total convert!



Colour details

Walls painted in Duck Egg Blue (Wall Paint), floor in Graphite (Chalk Paint with finish in Annie Sloan Lacquer).
Cupboard painted in Chalk Paint(R) in Aubusson and finished in Clear Chalk Paint(R) Wax
Table legs painted in Antibes Green and finished in Clear and Black Chalk Paint(R) Wax
Table top painted with a wash made of Chalk Paint(R) in Old White and finished in Clear Chalk Paint(R) Wax
Chairs clockwise from back left to front left: Painted in Chalk Paint(R) in Cream, Greek Blue, Antoinette, Louis Blue, (stool) Amsterdam Green and Old Violet – all finished with Clear Chalk Paint(R) Wax
Stool in back corner painted in Antibes Green and finished with Clear Chalk Paint(R) Wax. Cushion on top made from Annie Sloan Coloured Linen in Antibes Green & English Yellow and Provence & Aubusson
Curtain made from Old Violet and Old White Coloured Linen and Barcelona Orange and Napoleonic Blue Coloured Linen.



Why Choose An Interior Designer

We asked Maree Hynes from Maree Hynes Interiors this question.

A good interior designer will save you money getting your home designed right the first time. The colours will be cohesive and compliment your furniture, they have access to a whole range of products that you may have never come across.

We all have good intentions of updating our interiors but never have the time. An interior designer will come in and get things done for you, making your dreams come true. They will help create a space that is not only functional but aesthetically pleasing.

As an interior designer, we can help you not just with your drapes, blinds and wallpaper, we

can help every step of the way to ensure your renovation or build turns out not just how you dreamed it would, but be even more than that.

There are always new trends and ways to incorporate these into your home in a way that they will not date and always be relevant. Colour combinations and wallpaper choices can be confusing unless you have an eye for the overall project.

Adding not just the extra pizzazz, good interior design will add value to your home. When you employ an interior designer, you not only get access to their incredible knowledge and skill but also the treasure trove of resources we have on hand.

Are you looking to buy or build your dream home?

Look no further than Mortgage Advisor Jacqui Fraser from Mortgage Express Timaru!

With Jacqui's expert guidance and advice, you can navigate the complex world of mortgages with ease. Whether you're a first-time homebuyer or a seasoned property investor, Jacqui has the experience and knowledge to help you find the right mortgage solution to fit your unique needs and goals.

Jacqui understands that buying or building a home can be a daunting process. That's why she's committed to working closely with you every step of the way, providing clear and concise explanations of the various mortgage options available to you, and helping you make informed decisions about your home financing.

With access to a wide range of lenders and mortgage products, Jacqui can help you find the right mortgage for your needs and budget. And with her exceptional customer service, you can be sure that you'll receive the personalised attention and support you deserve throughout the home-buying or building process.

So why wait? Contact Mortgage Advisor Jacqui Fraser from Mortgage Express Timaru today and start the journey to the home of your dreams!

19 Church St, Timaru
027 529 7925
jacqui@mx.co.nz



WORDS: PATTIE PEGLER
IMAGES: SUPPLIED BY ANNIE SLOAN

I see a lot of inspiring things when I aimlessly scroll through Instagram. Mostly I just go 'that's amazing' and then forget about them. But when I spotted a dresser somebody had transformed with Annie Sloan chalk paint – something about it stuck with me. And that thing was...it looked really easy.

It got me thinking about the custom wood bookcase I had sitting in the garage. Then it got me out looking for Chalk Paint.

Your trusted local builder for new homes and renovations in the Mackenzie area



- New Architectural Homes
- Renovations
- Log Homes
- High Country Cabins
- Farm Buildings
- Light Commercial



Lain & Heather Hellmrich
Directors, High Country Carpentry




BAYLEYS
Bayleys Timaru, Geraldine, and Tekapo

All Over Residential

03 687 1227
bayleys.co.nz/canterbury

WHALAN AND PARTNERS LTD, BAYLEYS, LICENSED UNDER THE REA ACT 2008



SILVA STUDIO
Architecture + Management



55 Theodosia St, Timaru | info@silvastudio.nz | 03 688 7575 | www.silvastudio.nz

ARNZ Professional Member

MAREE HYNES INTERIORS @ HARLAU
New Build or Renovation package \$ 7,750

Let us take the pressure off with a package that will not only take care of your window furnishings, but can also provide an interior designer to help with your colours and design choices for your new home or renovation.

Plus receive a \$500 instore voucher
to help you complete your homes with accessories. Use for furniture, throws, cushions, home wares or anything that you love from our interior design showroom

Make your home the perfect home with Maree Hynes Interiors
www.mareehynesinteriors.co.nz
email: admin@mareehynesinteriors.co.nz Phone 03 686 6784
Open 7 Days 253 Beaconsfield Road, Timaru



CHAMBERS BUILDING

Chambers Building offers over 30 years of experience in renovations, extensions, and new homes in South Canterbury and Mackenzie Country.

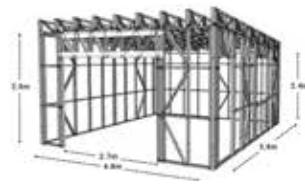
Renovating or building can be stressful, and it is our job to make this an enjoyable experience.

Give Matt a call to discuss your next project.

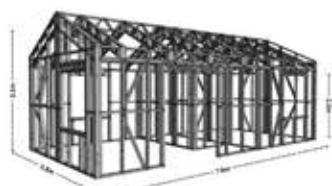
Matt Chambers
021 992 559
chambersbuildingltd@gmail.com
or message us on Facebook



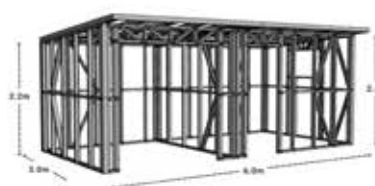
Choose from wide range of predesigned kitsets or design your own



GARAGE G-4.8x5.8-A



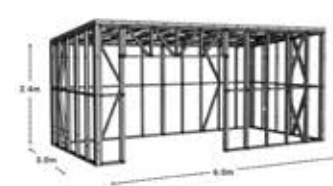
COTTAGE CO-3.8x7.8-A



SHED SH-3x6-A



TINY HOUSE TI-2.95x8-A



SLEEPOUT SL-3x6-A

Go to www.steelframeman.co.nz for more product listings



Kitsets starting from \$500 only

- Locally manufactured using New Zealand steel.
- Manufactured and delivered to your door within 2 weeks of design confirmation.
- Please note pricing covers framing kitset supply only.

FASTER • STRONGER • RELIABLE • AFFORDABLE

Get in touch today to discuss your requirements.

**Free Delivery in
South Canterbury**

