

Complimentary  
MONTHLY PUBLICATION

November 2020

# essence

essentially...south canterbury

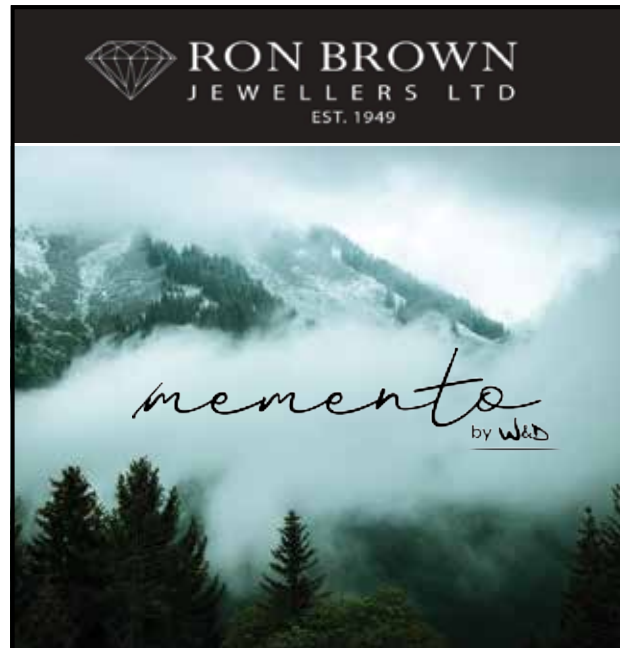
10 Feature  
Christmas  
Gift Guide

Design 6  
Planning the  
Outdoor Room

# SHOP THE LOOK

Love Shopping?

Our region has some superb stores, offering all sorts of unique items to generate interest and conversation.



Memento is a collection of New Zealand Native Flora and Fauna.

Fantail: A Beautiful small much loved native bird of New Zealand. Known for its daintiness, friendliness and fan like tail feathers.



304 Stafford Street, Timaru. Ph (03) 688 9835  
www.ronbrownjewellers.co.nz

## Tievoli Trading

Aluminium Trays with gold finish from \$49.50 - \$142



Up-cycled sewing machine table (variety of timber tops available) from \$350



Honey Bee Oven Glove \$21 each



3 Cotton Wash Cloths \$26



Honey Bee Trivet \$15 each

Sculpture for indoor or garden (commission taken)



Tievoli Trading

72 - 76 Talbot Street, Geraldine (old Barker's Shop)  
Phone 0274 313 362 or visit us on Facebook

## HOPKINSONS

The friendly team at Hopkinsons welcome you to visit their store full of beautiful furniture and homewares. While you are there take the time to enjoy a coffee and something to eat from Cafe Pharlap. NZTA & NZ Post Agency.

Tea Light Houses from \$39.99



Lattice Rect Hall Table \$339



Black Flat Standing Light Up Trees



Light Up Star \$149.90



Reindeer Gold Sitting \$219

Reindeer Gold Standing \$219

Open 7 Days

Cnr Seadown Road & Hilton Highway, Washdyke  
Ph (03) 688 7662 www.hopkinsons.co.nz

# contents

As the weather gets warmer we're all spending a bit more time outdoors and if you're thinking you'd like to revamp your outdoor space at home then check out our article on how to plan the perfect outdoor room on page 6. Staying with the outdoors, Rachel Vogan aka The Happy Gardener, has some great suggestions for Christmas gifts from your garden on page 8.

Summer is also the time for enjoying the markets, festivals and fetes in our beautiful region and we're looking forward to those traditional summer events like the Timaru Santa Parade next month and The Festival Of Roses which promises to be a real treat. If fashion and flowers are your thing then you might also want to check out The Wearable Flower Show. See page 20 for details.

This month our writer Gilly caught up with local photographer Brian High - who has worked on some amazing projects and shares his career highlights with us. Read all about it on page 9.

For those organised folk amongst you who are already thinking Christmas gifts then read on for a little inspiration with this month's gift guide - packed full of great ideas from our wonderful South Canterbury retailers. We are long time fans of shopping local and putting together the gift guide really brought home to us what a fantastic range of fashion, homewares and more can be found in our local stores. Page 10.

That's all for this month - make sure you get out and about and enjoy our wonderful region in the coming weeks.

Have a great month - Pattie

**contact us:** Dorothy McLennan - Publisher  
dorothy@essencemagazine.co.nz  
Ph: 0274 507 532

Pat Naude - Advertising & Business Manager  
pat@essencemagazine.co.nz  
Ph: 022 684 5974

Liz Bell - Advertising Co-ordinator  
liz@essencemagazine.co.nz  
Ph: 022 176 4349

Larnya Bourdot - Graphic Designer  
larnya@essencemagazine.co.nz  
Ph: 027 525 8649

Published by **Essence South Canterbury Ltd**  
Opinions expressed in Essence Magazine are not necessarily those of Essence South Canterbury Ltd. No responsibility is accepted for unsolicited material. No material may be reproduced without prior written permission of the publisher.

22 Chapel Street, Timaru, South Canterbury. Ph: 03 684 8439 | www.essencemagazine.co.nz



Profile

Gift Guide



Fashion



Beautiful festive stock is filling the shelves at Maree Hynes Interiors. Whether you are searching for unique gifts or quality Christmas decorations they have you covered.

French Country Collections  
Supplied by Maree Hynes Interiors

## Artma Spiritual Gallery MEDITATION

Tuesday 9.15am  
Silence only  
Wednesday 7.30pm  
Guided & Silence  
Thursday 9.15am  
Guided & Silence  
Friday 6pm  
Sound & Healing  
Saturday 9am  
Silence only

All sessions by \$5 - donation towards Nepali Orphan Fund

Enquiries:  
Royal Arcade Timaru 03 686 9878



## Resort Style Facilities

The Leisure Centre is the hub in which we hold communal entertainment and events. Offering resort style facilities: Indoor Swimming Pool, Spa, Library, Hair Salon, Craft Room, Therapists Room.

It is a modern facility surrounded by an outdoor lounge to enjoy barbeques, petanque, mini golf, bowls, putting green, croquet. Something for everyone at any time.

33 Connolly Street, Geraldine  
P 0800 845 524 or 03 693 8340  
E sales@mlv.org.nz  
www.mlv.org.nz



ACCREDITED VILLAGE OF THE RVA

## TWO ROADS GIFT BOX CO

Rose - 021 120 4299  
hello@tworoadsgiftboxes.co.nz  
www.tworoadsgiftboxes.co.nz



Premium Gift Box Company based in South Canterbury for all your corporate and individual gifting requirements.

Your trusted local builder for new homes and renovations in the Mackenzie area



- New Architectural Homes
- Renovations
- Log Homes
- High Country Cabins
- Farm Buildings
- Light Commercial



Email: admin@hcclimited.co.nz  
Office: 1 Gall Street, FAIRLIE 7925  
www.highcountrycarpentry.co.nz

0800 922 883

**IF YOU CAN'T WALK STRAIGHT,  
YOU CAN'T DRIVE STRAIGHT**



**ROADS  
DON'T KILL.  
DRIVERS DO.**

Visit [scrs.org.nz](http://scrs.org.nz) for more information

## Too Much Punch for Judy

Too Much Punch for Judy show was performed on the 14th of October by The Aidan Theatre cast which told the story of Judy and the tragic effects of drink driving. This was sponsored by SC Road Safety.



1. Cast - Dominic Flanagan, Daniel Nodder, Teag Mackay, Prea Millar and Kate Low  
2. Lane Crisp, Chrissy Potter, Maddy Willis and Matt Curragh 3. Fraser Pattie and Lily Bolland  
4. Cat and Evan MacClure 5. Jess Young, Aaron Segar and Imogen Young 6. Troy Hull and Alastair Brownlie 7. Simon, Clare, Bronte and Will Davenport 8. Veronica v d Merwe, Frik v d Merwe and Frieda Naude 9. Eleanor Rarity and Kim de Joux 10. Rebekah Frame, Carolyn Willis and Kimble Herderson

## Evening of inspiration

This unique event hosted by Ineke of Petronella's Interior Design showcased the latest fabrics and wallpaper from leading textile houses James Dunlop Textiles and Malcolm Fabrics. What a fantastic turn out to this wonderful event.



## Recycle Runway

The Cancer Society's annual Recycle Runway was held on Thursday 29th October in the Craighead Diocesan School Auditorium with just over 120 attending. The night started with a drink and nibbles on arrival followed by a fashion show with 72 outfits on display and the opportunity for the ladies to purchase clothing on the evening. Racks and racks were wheeled out and it was a race to get to the best bargains - ranging from just \$1 through to \$30. A great night was had by all with over \$5500 raised which included a Pop-Up Shop on the following day and on Saturday the 7th November.



### Warehouse Liquor

Sometimes you just need a drink, other times you need a trendy cocktail to impress your guests with. In either of those cases, head to Warehouse Liquor. They have a wide range of wine, beer, spirits, RTDs, ciders, gifts, etc. Also offering delivery service inside the Timaru town boundary - so pop in today and get your Christmas drinks sorted.

35 Browne St, Timaru Ph 03 688 1012  
[warehouseliquor.co.nz](http://warehouseliquor.co.nz)

### The Bottle O

Bottle O has a wide range of liquor available. Russian Standard, Larios Original, Sauza Gold, Baileys Irish Cream, Beefeater Gin Pink, Kahlua, Kahlua Salted Caramel, Malibu, Jameson Irish Whiskey. Come in store and see more special deals. With Christmas around the corner visit us for your gifts and drinks. (Please drink responsibly)

**Any 3 of the above for only \$99**

Shop 4, The Landings, 50 Theodosia Street, Timaru Ph 03 971 5546

# Movie Max Digital

## GIVE THE MAGIC OF THE MOVIES FOR CHRISTMAS

Movie Max Digital have gift vouchers available for all ticket types.

Receive a discount for purchases of 5 or more tickets.

For more info, call 03 684 6987 or email [info@moviemaxdigital.co.nz](mailto:info@moviemaxdigital.co.nz)

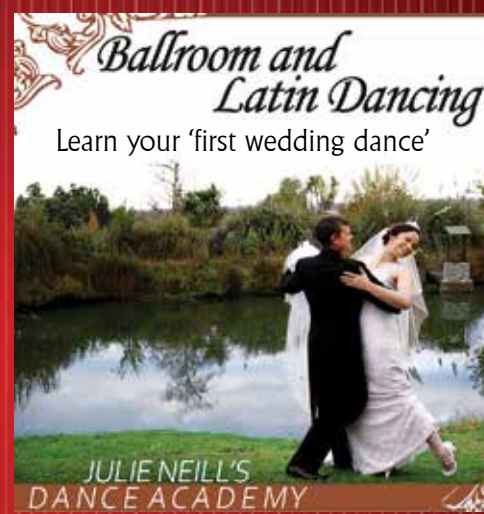


**INFO LINE  
03 684 6987**

For all session times visit our website for more information

[www.moviemaxdigital.co.nz](http://www.moviemaxdigital.co.nz)

## Julie Neill's Dance Academy



*Ballroom and Latin Dancing*  
Learn your 'first wedding dance'

Ballroom, Latin American & New Vogue  
Private Lessons, Weddings & Special Occasion.

65 Church Street, Timaru | 03 693 9990 | 027 206 8456

# STYLE UP FOR LESS.



**STOCK ARRIVING NOW!**

## NEW ASX FROM \$27,990+ORC\*

Fresh new design • 18" Alloys • LED Headlamps, DRLs • 2.0 or 2.4L (VRX only) Engine • Reversing Camera • Smartphone Connectivity • 10 Year Powertrain Warranty • Forward Collision Mitigation, Blind Spot Warning on XLS and VRX • Leather-Appointed Interior, Front Heated Seats, Electric Adjustment Driver's Seat, Panoramic Roof on VRX.

We have a demonstrator ready to drive, call us today 03 684 8501.

**10/5 YEAR DIAMOND ADVANTAGE**  
10 year / 150,000km Powertrain Warranty / 5 year / 100,000km New Vehicle Warranty / 5 year / 100,000km New Vehicle Warranty / 5 year / 100,000km New Vehicle Warranty

**MITSUBISHI MOTORS**  
Drive your Ambition

**Caroline Mitsubishi**

23 Barnard Street, TIMARU

Phone 03 684 8501

Website [carolinemitsubishi.co.nz](http://carolinemitsubishi.co.nz)

\* Price listed is for ASX LS, VRX model shown. Price excludes On Road Costs of up to \$550 which includes WOF, Registration and a full tank of fuel. Visit [mimz.co.nz](http://mimz.co.nz) for full Diamond Advantage terms and conditions.

# Woodys



where vision never goes out of style

26 Canon Street, Timaru | 03 688 9791  
[info@canonstreet.co.nz](mailto:info@canonstreet.co.nz)  
[www.canonstreetoptometrists.co.nz](http://www.canonstreetoptometrists.co.nz)

**CANON STREET OPTOMETRISTS**



## Quail House Flower Farm

Based in Pleasant Point, Quail House Flower Farm is owned and operated by Lynley Tee. Lynley is a purveyor of fine fresh flowers. She and Rosemary (her little green van) can be spotted around the district distributing beautiful blooms and handpicked bouquets.



Lynley grows a variety of vintage style seasonal flowers starting with glorious daffodils, followed by elegant tulips (in a kaleidoscope of colours) blowsy peonies, fabulous fragrant roses and in late Summer, romantic dahlias and chrysanthemums. Every bouquet is beautifully put together or you can arrange yourself.

You will find Lynley and her wonderful flowers every Saturday at the Timaru Artisan Farmers Market and other local markets in the South Canterbury region.

Hand tied bouquets for any occasion can be ordered and delivered locally in Timaru, Temuka, Pleasant Point.

Quail House Flower Farm also offers a

seasonal subscription for a regular weekly/fortnightly delivery. Freshly handpicked local flowers arriving regularly at your door or place of business.

Quail House Flower Farm prides itself in growing beautifully scented, natural vintage fresh flowers with a low environmental footprint. Sustainable and chemical free encourages bees, butterflies and other plant friendly wildlife. "From my farmgate to your vase".



Call Lynley on 0272935432  
E [quailhouseflowerfarm@gmail.com](mailto:quailhouseflowerfarm@gmail.com)  
www.[quailhouseflowerfarm.nz](http://quailhouseflowerfarm.nz)

# Planning The Outdoor Room

words: **Pattie Pegler** images: **Dorothy - Essence**

When it comes to summer most of us want to make the most of our outdoor space – whether that's an unruly bit of grass or an expansive deck. So how do you get started?

"Think about what you actually like," says Dan. "A lot of people I see really struggle with visualising." To help overcome this he recommends collecting images of outdoor spaces or things you like on your phone and then scrolling through your gallery while holding the phone up to your garden space.

Look at the space in real life and take note of how the natural elements affect it. There's no point in creating an outdoor dining space where prevailing winds are going to whip away your paper plates unless you've got some plans to block out the wind. Whether you block it out with modern glass panels or sturdy trellis covered in lush climbing green is up to your personal taste.

And, of course, you're going to need some flat ground to work with before you start laying out decks or tiles or courtyards. Typically you will want three main spaces in the outdoor area. One for eating with a table and seats; one for relaxing with comfy chairs or outdoor couches and one for cooking – where you will probably have your barbecue.

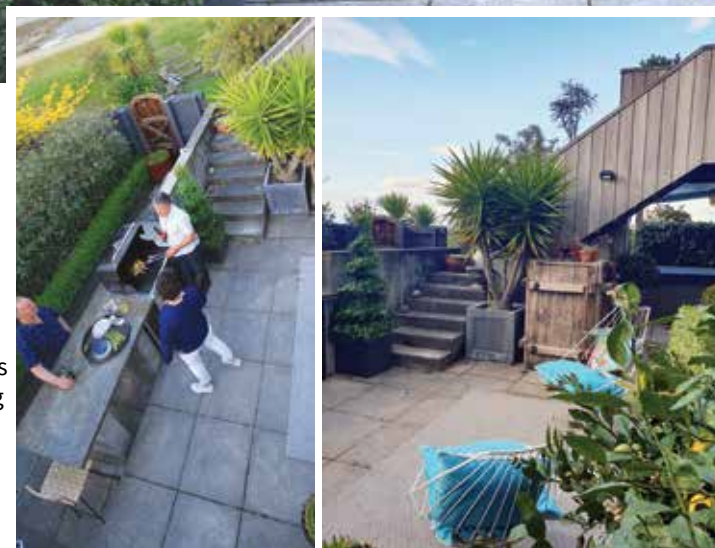
It's important to have a space either around the barbecue or nearby where people can stand, says Dan, "blokes like standing around with a beer in hand while one of them cooks". With some idea of the style you want it also helps to mark out the areas of your outdoor space, you can use stakes and string or marking spray paint - it's another great way to visualise your ideas before you start building.

"With decks people often think they don't need as much space," says Dan. "But when they're built they never think they are too big."

Think about your budget and your priorities. If you want a small cosy space cascading with greenery you may want to spend up on plants first – get feature trees in as soon as possible, says Dan. But if outdoor entertaining is your favourite pastime then you may want to divide up your

space differently and splash out on some statement pieces.

A lot of people like the concrete look and it doesn't need the same degree of maintenance as wood furnishings. "You can leave these outside year in and year out and they



still look good," says Shane Kirwan, of In Situ GRC, who advises customers on creating outdoor kitchens featuring a special form of concrete that is both stronger and lighter than the traditional. It can be used for everything from tables to countertops and outdoor fire-places.

And again, get back to basics with planning, says Shane. "Think about how many people you might want to seat in your outdoor room and think about what you want to cook on." Shane helps people design areas that incorporate anything from basic barbecues to full on kitchens with under bench fridges, pizza ovens and all manner of cooking facilities from smokers to braai – the choices are endless. "The barbecue is usually a social point for guys so make sure it's not facing a wall," advises Shane.

If you already have an outdoor spot but just want to give it a revamp then there are plenty of ways to get inspired. Try some new outdoor chairs – at the time of writing you can pick up some gorgeous retro rattan on TradeMe for a song. Repurpose old items – large wooden cable reels can make great outdoor drinks tables for instance. Grab some cheap and cheerful accessories to colour up a small drab space – you could throw down some fake turf on a dull concrete patch and invest in a couple of colourful deckchairs. Or keep an eye out for fabulous aged plant pots of all shapes and sizes that can be stuffed with lush greens and pops of colour.

The choices are endless so sit down, make a plan and start pulling together your perfect outdoor room. Summer is coming.



## Elloughton Retirement Village

Our community is rich and varied, made up of friends and neighbours who have led amazing, inspiring lives. Teachers, preachers, nurses, naturopaths, pilots and sports champs - it's really quite an extraordinary group of people you will find living here.

With superb amenities, beautiful surrounds, tailored care services and engaging activities, you too will find a rewarding, inspiring life waiting for you at Elloughton Village.

Anne-Kathrin Bretzke, our Site Manager, would love to take you on a personalised tour, answer any questions you have and introduce you to our vibrant, ever-growing community. Give us a call to make an appointment.

Brand new, architecturally-designed, 2-bedroom villas, priced from just \$390,000.



**Independent retirement living**  
With advanced care options on site  
**Leave no pet behind**  
Your family pet is welcome here

**Peace of mind**  
St John medical alarm in every home  
**Brand new villas**  
With leading brand appliances

Discover inspired living at Elloughton Village.

Call Anne now on 0800 155 155

[www.elloughtonvillage.co.nz](http://www.elloughtonvillage.co.nz)  
1 Pages Road, Marchwiell, Timaru 7910

Our Village sales office has more information and is open from Monday to Thursday. Bookings for tours are essential.



## MORRIS WADDELL ELECTRICAL

Shine a little light on your decking, garden or driveway. Morris Waddell have your outdoor and security light systems sorted!

60 GLENITI ROAD

24/7 PH 03 686 2422 E [mwaddell@xtra.co.nz](mailto:mwaddell@xtra.co.nz)  
[www.morriswaddellelectrical.co.nz](http://www.morriswaddellelectrical.co.nz)

Improve your outdoor ambience with outdoor lighting



# Hoe Hoe Hoe!

Well I know it should be Ho Ho Ho, but I could not resist.

Rachel Vogan, The Happy Gardener, has a few ideas on surviving the silly season up the garden path.

With the silly season well and truly upon us, finding time to catch up on things up the garden path can be a challenge. However this is not a bad thing, rather than getting busy doing stuff and charging around like a chook with a missing head, take time to reflect on all the good things about your garden, take time to be in your garden as a place and a space of solace, acknowledge the year has been crazy, and through it, both you and your garden have survived.

Presents with purpose, when a gift card does not quite cut it, think outside the box.

1. Salvia Bonfire makes a superb gift, for a couple of dollars, one plant, wrapped in Christmas wrapping makes a wonderful gift for a fellow green fingered loved one.
2. Christmas Lilies and Pine trees are the aromas (smells of Christmas). Consider using a real living tree this year, rather than a fake or plastic one. I have a 'Pine Nut' in a large pot that I bring inside each year, granted there are probably enough nuts in my house already, but one more does not hurt. Potted plants and Christmas lilies make tree-mendous gifts.
3. Offer to Garden sit. The ultimate gift for a fellow garden lover is offering to look after their prize plants while they are away. Both indoors and out. Chances are they will return the favour.
4. Make a wreath. Such a fun and fabulous thing to do, I made my first ever one last year, in the



shape of a horse, Pops (the horse's name) looked amazing. Angela Wilkens, a floral artist from Canterbury, was running wreath making classes, it was such fun and a great thing to do with friends.

5. A floral face mask, now you may mock, and think I have been delving into too much festive spirit, but it could be a handy gift for any good gardeners handbag or tool shed (everyone wants to be protected from nasty airborne diseases)

Enjoy the garden over the silly season, if your own one is not looking that great, hang out in someone else's.

Happy Gardening people.

*Rachel Vogan, The Happy Gardener has plenty of soil under her fingernails, with over 30 years in the garden game. Rachel joins the Essence team to share her wealth of knowledge about life up the garden path. Rachel is an acclaimed writer, International Garden Judge, Radio host and has published many books, she offers advice on gardens and is a serious plant lover.*

## FROM THE Mayors Desk

Tena Koutou, hello to everyone,

As we head into the warmer months and look forward to the holiday season we can reflect on what has been an unprecedented year. 2020 has been a trying time for all of us, suffering social, cultural and economic challenges. Despite this we should be extremely proud of how we have supported each other individually and as a community.



this feedback on the Timaru District Council website and is a great opportunity to provide your outlook.

The Timaru District Council is currently working on a number of different projects across the organisation, and we're keen to get your feedback.

The City Hub strategy is being developed to define the vision of the City Hub and identify the various foundations that contribute to the Timaru Central Business District (CBD). The elements are inner city living, events, open green spaces, heritage, streetscape, earthquake prone buildings and more.

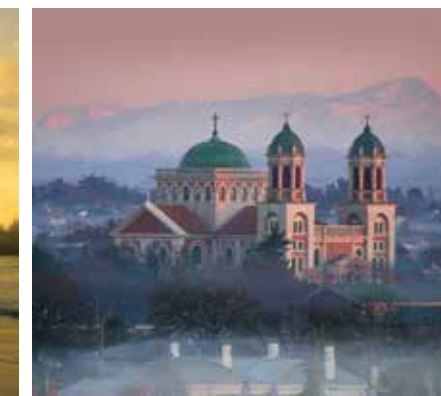
The Steering Group are wanting your feedback on what your needs and wants are, as well as what you think doesn't and does work currently. You can provide

The Draft District Plan has also been published and open for public comments until the 30 November. This is an incredibly important document as it manages how we use and develop land and protects what we love about our district, and it's really important that everyone takes the time to tell us what they think.

As we prepare for the upcoming festive season I would like to take this opportunity, on behalf of the Elected Members and the staff of the Timaru District Council, to wish everyone a very Merry Christmas and a happy and prosperous New Year.

Kia kaha  
Mayor Nigel Bowen

words: Gilly Oppenheim photography: Brian High



## Brian High An Infinite Imagination

What an interesting, creative and busy man Brian High is. This talented photographer and videographer's photography graces many of our local calendars and national magazines, as well as television news and current affairs items. Brian says that 'getting a good shot is what drives me' and his inspiration comes from the places and the people he comes across.

His most recent effort was an excellent short film of the whale stranding on Caroline Bay and last year he produced a superb audio-visual about our local environment entitled 'To Whom It May Concern' at the Aigantighe Art Gallery. This was a 360 degree audio-visual installation with projections which reflected off the floor and wrapped around the walls. It was intended to generate a conversation about peoples' impact on the planet. Hamish Pettengell, the art gallery's exhibition curator, said that the exhibition was unlike anything they had featured before and gave them the opportunity to show what the gallery can do with the space, as well as showcasing local talent.

In November Brian will be showcasing another audio visual experience at the Art Gallery, this time entitled 'Invisible'. It has been developed from the previous exhibition, using multiple projectors, projecting again onto the walls and the floor, to give the viewer an immersive experience. Brian's inspiration for this series was the lockdown, when we had time to stop and think about the infinite and intimate spaces around us. The visuals are an almost ethereal representation to inspire people to think about what you cannot see in the infinite spaces around us.

Brian has always had an interest in photography. He bought his first plastic camera at 14, and he spent all of his pocket money on photography. His three part time jobs whilst still at school paid for his passion and Langwoods allowed him to use their dark room at weekends. His first real camera was a heavy Russian model, with which he did some stories worthy of publishing. He also got arrested for using this Russian camera to film a protest about American spy bases in Blenheim!



Since Brian shifted back to Timaru, he has been doing advertising agency work and he has been filming for TVNZ, Newshub and other national and international news and current affairs programmes. He also does work for TV3. More recently he has worked with Corporate Print to produce beautiful books, such as the lovely coffee table book about the Timaru District. Brian said he was 'frustrated that nobody had portrayed the South Canterbury district in its best clothes' and this beautiful book does just this. He has also produced a book about Rod Tempero and his wonderful hand-built cars, as well as illustrating a children's book about Pot the Dragon on the Earnslaw in Queenstown. Brian prefers the photographic essay genre and he would love to produce a book about the scenic Mackenzie country. In the meantime, he is enjoying creating these new immersive visual experiences to make us think about the world around us.



*"Getting a good shot is what drives me"*

After working as a freelance photographer, Brian decided to pursue the life of a poor artist, so he went up to Auckland with samples of his work in a psychedelically painted box, where he landed his dream job with Birch Rising Studios - a studio of designers, developers, photographers and filmmakers. With Len Birch as his mentor, this was the start of Brian's full-time career in photography. He worked with Len for 13 years, doing still photography for advertisements and together they set up the first cyberchrome studio in New Zealand.

**AMP-UP the FUN!**

**SUZUKI**

Are you ready for this? Push the limit in the new 2020 Suzuki Swift with next level style, smart tech, advanced safety and outstanding fuel efficiency. Dial up the fun in a Kiwi favourite — test drive today.

**GL FROM \$20,750\*ORC RS FROM \$27,990\*ORC**  
**NO DEPOSIT FINANCE FROM JUST \$89 PW\***

**NEW 2020 SWIFT**

\*\$88.90/week based on Swift GL Manual, \$20,750 plus ORC, total amount payable \$23,202.90; \$121.60/week based on Swift RS Two Tone Auto (shown), \$28,500 plus ORC, total amount payable \$31,737.60, nil deposit 3.9% p.a. fixed interest rate and 5-year term. On payment of on-road costs to the Dealer, finance payments include a \$305 documentation fee and \$10.35 PPSR fee. Normal lending and credit criteria apply. Offer available from 1-31 October 2020. Excludes fleet purchases, demo vehicles and all other promotions. [www.suzuki.co.nz](http://www.suzuki.co.nz)

**HOLLANDS SUZUKI CARS** 13-15 North Street, Timaru 03 688 8297 [www.hollandstimaru.co.nz](http://www.hollandstimaru.co.nz)

## WHEEL AND TYRE SPECIALS

Wheel and Tyre Packages for your Hilux **from \$1795**

Wheels from TSW, BG Wheels, Black Rhino, DTM, Niche, Fuel, Lenso, Dynamic Wheels, Dirty Life Race wheels, Pro Comp, Kudos, Alpha, Rota.

We have wheel and tyre options for all your vehicles.

**SOUTH CANTERBURY TOYOTA** | **McDermid AUTO COLLECTIVE**

Cnr North & Stafford St, Timaru  
Ph 687 9280  
Freephone 0800 1 TOYOTA  
[www.sc.toyota.co.nz](http://www.sc.toyota.co.nz)

# 2020 Christmas Gift Guide

## Shopping Global And Keeping It Local

This time of year is birthday season for my family - all year long we live stress free, no cards to remember or gifts to post. Then suddenly everyone is having a birthday and just a few short weeks later it's Christmas. I am a person that leaves everything to the last minute and with my family in Canada - I can't just pop to the shop, wrap something up and drop in to see them in a matter of hours. So over the years I've found the next best thing - local retailers.

I've organised last minute gift hampers and next day flowers and had helpful retailers write cards for me. This year I found a local bookshop in the small town where my mum lives. An email and a phone call later and the guy in the shop had boxed up three great books and walked them down the road to my mum's apartment block. "Oh yes, I know it," he said when I gave him the address. "I can see it from the shop window. I'll walk the books over myself." My mum was delighted to have a surprise box of books delivered and if she already has any of them the bookshop guy has

said no problem, he'll give her a store credit. It wasn't just easy - it was pleasant and personal.

It made me think how shopping local doesn't have to stop when we're buying for people out of town. And so when my sister wasn't sure what to buy for my kiddo's birthday I sent her some links to a couple of local stores online. She found some great gifts, the store gift-wrapped them for her and delivered them the next day with a handwritten note.

So if you're buying gifts for family overseas or they want to send you some things for Christmas - suggest they think local and send them some links to some of our great local stores. There's no worrying about the vagaries of international post in Covid times; things like deliveries and exchanges are often easier to sort out; gift wrapping is usually available and they might even pop a card in the package. And everyone feels a little bit happier.

So keep it local this Christmas.

Pink Christmas with Pearls \$14.95  
Paradise Tote \$19.95  
Beeswax Kit - Out Of This World \$27  
Mice Intials Pink Cross Stitch \$26  
Black Swan Door Stop \$39.95  
AJ Workroom Gold Bird Scissors \$14  
Zakka 9 Drawer Unit \$69

**Polly's Patchwork**  
www.pollyspatchwork.co.nz  
72 Main Street, Fairlie  
Ph 0273 705 098  
www.pollyspatchwork.co.nz

Light Mustard Tee \$45  
Coffee Mugs \$15 each  
Decor Car \$35  
Clocks \$25 each

**FROCKS & STOCKS**  
At Obsolete Iron Motors  
87 Main Road, Pleasant Point  
Ph (03) 614 7410  
www.obsoleteiron.com

1:64 S690 Combine \$49.95  
1:16 8400R Tractor \$239.95  
Electronic Fishing Rod \$36.95  
Mini Ag Equipment Assortment \$12.95 each  
Johnny Tractor Lights & Sounds \$19.95 each  
1:16 JD Backhoe Loader \$94.95  
Tractor-opoly \$79.95  
Build-A-Buddy Corey Playset \$29.95

**JOHN DEERE**  
**DE DRUMMOND & ETHERIDGE**  
40 Racecourse Road  
Ph (03) 687 4005 • 0800 432 633  
www.dne.co.nz

Daisy London Alexa Necklace, \$149  
Daisy London Vita Necklace, \$280  
STOW Locketts 9ct gold charms, \$89  
Stolen Girlfriends Club Text Logo Stamp Sleeper, \$129  
Stolen Girlfriends Club Text Logo Sovereign Ring, \$219  
Harry Potter x Pandora Spinning Time Turner Pendant, \$139  
Casio G-Shock GA900A-1A9, \$329  
Citizen Eco-Drive Perpetual Calendar BL8153-11A, \$650  
Handmade platinum & 18ct gold green beryl ring, \$3,990  
Pandora Isa the Star Charm, \$45  
Pandora Sparkling Snowflake Pave Charm, \$99  
Handmade Platinum and 18ct Gold Green Sapphire & Diamond Ring, \$4,449

**The Ringmakers**  
Manufacturers of Fine Jewellery  
270 Stafford Street, Timaru  
Ph (03) 688 1362  
www.theringmakers.co.nz

Amberlene Wallet \$27  
Beau Beaded Earrings \$39  
Pearl Necklace \$55  
Floral Scarf \$25  
Beau Accessory \$20  
Beau Wallet \$65

**FASHION FOCUS**  
Highfield Mall, Wai-iti Road, Timaru  
Ph (03) 688 8711  
www.fashionfocus.co.nz

Moss Cheetah Stripe Sweater \$89.95  
Discs Necklace Sterling Silver \$46.95  
Bridget Bee Bag Pink \$29.95  
Gathering Momentum Top \$197  
Charlie Shoe Tan \$170  
Mint the Label Soy wax candle \$49.95

**MINT BOUTIQUE**  
72 Main Street, Fairlie  
Ph (03) 685 8084  
www.mintboutique.co.nz

Childrens life jacket \$130  
Man's best friend Life jackets \$79.99  
Baby life jacket \$99.99  
Helmets from \$712  
Wipe out tube \$149  
Women's life jacket \$199

**CAN-AM**  
127 Hilton Hwy, Washdyke  
Ph (03) 688 7517  
www.timarucanam.co.nz

Set 3 tea light holders \$29  
Planter Cottage \$29  
Meze Audio headphones from \$359  
Set 4 mini vases \$45  
Angel Silver Star \$25  
Horse Hook \$69

**LIVING with style**  
79 Sophia Street, Timaru  
Ph (03) 688 2960  
www.livingwithstyle.co.nz

**On your child's Christmas Wishlist**

**VANS** "OFF THE WALL"

**BIRKENSTOCK** MADE IN GERMANY - TRADITION SEIT 1774

**STOMPZ shoes**

**Dr. AirWair Martens**

**Festive Rub**

**Boxing Gloves**

**Lantern Cove Candles**

**Weave Cushions**

**Solmate Socks**

**100% NZ Wool Coaster Sets**

**matilda & the metalman** DESIGN STORE & MORE

76 Main Street, Fairlie Ph 03 685 6090

**Sarah Thomas Jewellery, Timaru. Sterling Silver and Bronze Neckpiece (limited edition), \$420**

**Hayden Tennent, Fairlie. Witch hazel, oil on canvas, framed, \$250**

**Kylie Matheson, Dunedin. Drifters, glazed clay \$230 each**

**Bluemly, Lake Tekapo Switzerland. Hand crafted Zwarowski Crystal Hoops from \$60**

**George and Edi, Wanaka. Handcrafted Boutique Fragrances, Diffuser Sets and Candles from \$14**

**David Thomas, Timaru. Cast and carved acrylic Ice-Creams, \$150 each**

**77 Art + Living**  
77 Main Street, Fairlie  
www.77artandliving.com

**Antler Socks \$15**

**Some Resin earrings \$20**

**Santa Cruz Bucket Hats \$40**

**Milky Rashy \$39.90 and Milky Pants \$23.50**

**Kissed By Radiocool Dress \$59.99**

**Santa Cruz Wallet \$27.99**

**Roxy Wallet \$55**

**evolv**  
200 Stafford Street, Timaru  
Ph (03) 688 9166  
www.evolvclothing.co.nz

**From Funkita, Zoggs & Speedo. Boys & Girls Swimwear Sizes 2 to 14 Priced from \$30 to \$90**

**Women's Swimwear Sizes 8 to 22 Priced from \$65 to \$130**

**Men's Swimwear Sizes S to 2XL Priced from \$40 to \$75**

**Swim Caps & Goggles for all of the family Priced from \$9 to \$100**

**Squad Backpacks & Mesh Swim Bags Priced from \$29 to \$113**

**Caroline Bay TRUST RORAKI CENTRE**  
Ph: 03 684 2229  
11 Te Weka Street, Timaru  
www.cbaytimaru.co.nz

**STATUS ANXIETY. Good Intentions Crew \$90**

**SGC Claw Ring \$349**

**SGC Love Claw Ring \$229**

**SGC Text Logo Stamp Sleeper \$129**

**SGC Text Logo Stamp Earring \$139**

**STATUS ANXIETY. Plunder Bag \$219.95**

**STATUS ANXIETY. Think It Over Tee \$59.95**

**Volcom Eyewear Jewel Sunglasses \$140**

**Triumph & Disaster Road Less Travelled Gift Set \$89**

**Rollie Prime Sneaker \$219.95**

**Federation + Pocket Crew - Oil Spill \$119.9**

**SGC Elixir Flask \$59**

**Ivy Blu Lucy Top \$189**

**BLANK SPACE**  
79 Main St, Fairlie | Ph (03) 685 6112  
www.blankspacethestore.com

**PRESIDENT 550 ST \$16.5 COMBO NOW \$399**

**MS 391 (20") FARM BOSS PETROL CHAINSAW NOW \$1387**

**FS 85 R PETROL BRUSHCUTTER NOW \$691**

**HS 56 C-E 600MM PETROL HEDGETRIMMER NOW \$865**

**FS 55 C-E PETROL LINE TRIMMER NOW \$474**

**RMA 339 BATTERY LAWMOWER KIT NOW \$674**

**STIHL SHOP**  
Stihl Shop Timaru  
105 Hilton Highway, Timaru  
Ph (03) 688 2557

**Packet Freezable Bag \$46**

**Scion Lintu Mug \$22 each**

**S/S Go Cup 410mls \$34**

**Chasseur Ramekins set of 4 \$34**

**Melamine Ware from \$5 each**

**Le Creuset Casserole \$499**

**the KITCHEN Cupboard**  
34B Talbot Street, Geraldine  
Ph 03 693 8632  
www.thekitchencupboard.co.nz

**Spreading the Christmas spirit**

- Gather with your family, colleagues, friends, neighbours or groups
- Take a photo with a Christmas theme
- Pick a Christmas message and send to [www.timarusantaparade.co.nz/Cheer](http://www.timarusantaparade.co.nz/Cheer)

*Wishing everyone a safe and happy Christmas season*

**Closing date 30th November 2020**  
**2nd December 2020 Community release date**

Project will be available for distribution and on Primeport Timaru Christmas Parade Facebook from 1st December 2020

TECH COMPUTERS, SOUTH CANTERBURY TOYOTA, Venture Timaru

**PRIMEPORT TIMARU**

**Timaru Santa Parade**  
6th December 2020 at 2pm

*Wishing everyone a safe and happy Christmas season*

In association with Timaru Suburban Lions, Timaru Host Lions, Timaru Rotary, Timaru North Rotary and Timaru Christmas Parade Trust

Venture Timaru, Palantus, SOUTH CANTERBURY TOYOTA, McDermaid, TIMARU DISTRICT COUNCIL

[www.timarusantaparade.co.nz](http://www.timarusantaparade.co.nz) [www.facebook.com/timarusmasparade](http://www.facebook.com/timarusmasparade)

JewelCraft

Im dreaming of a  
*Jewelcraft*  
Christmas

**9ct Gold**



9ct Gold Heart Multi Coloured Stone Pendant \$630



9ct Gold Hoop Earrings \$180



9ct Half Sovereign Pendant \$899



9ct Gold Ring \$445



9ct Gold Tear Drop Earrings \$280



9ct Gold Star Necklace \$399



9ct Gold Half Sovereign Ring \$2,100

**Ellani**



Ellani Tree of Life Pendant \$144



Ellani Pendant Necklace \$89



Ellani Earrings \$114



Ellani (IP plated) Rose Gold Necklace \$89



Ellani (IP plated) Rose Gold Bangle \$54



Ellani Leaf Earrings \$54




Ellani Ring \$169



Ellani Gold Earrings \$43



Ellani Ring \$144



Ellani Earrings \$60



Ellani Heart Bracelet \$54



Ellani Ball Earrings \$32

**Police Watches for the Guys**



\$339



\$289



\$229



\$399



\$449



\$389

**Sterling Silver**



Sterling Silver Oval Belcher Bracelet \$95



Shooting Star 9mm Signet Ring \$79



Sterling Silver Hand-Made Earrings \$149



STG Textured Dog Whistle Med \$145



Heart Signet Ring \$79



Hammered Bangle \$189



Sterling Silver Chain Bracelet \$215



THE WETDOG GALLERY



ABSOLUTE FLOWERS



PETER HERRON FLOORING/MADAM MAT



TIMARU SEWING CENTRE



THE RINGMAKERS



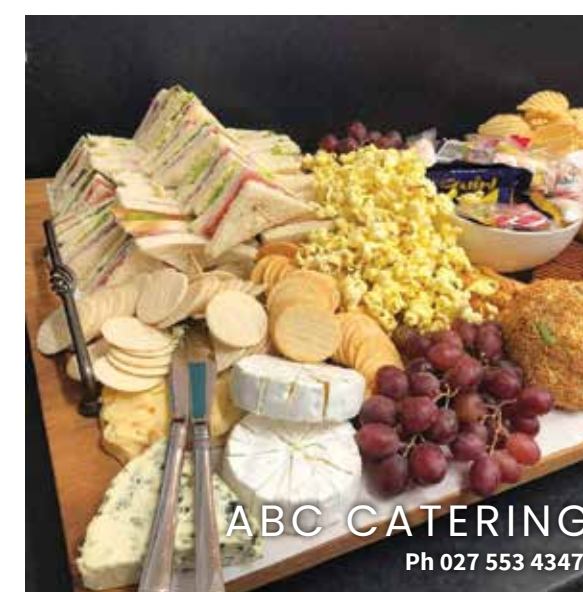
MR JONES

DISCOVER  
*South Canterbury*

HOME • FASHION • FOOD



CAMERONS  
www.cameronsclothingstore.com



ABC CATERING  
Ph 027 553 4347



MILLIE ROSE  
10 Church Street, Ph 0210 865 5486





# What's new at Grant Jenkins Contracting?



There's been a lot going on at Grant Jenkins Contracting in recent months. Grant and Silvia and their team of award winning gib stoppers, painters & decorators have recently moved to new purpose-built premises at 52 North Street where you can come in and discuss with us your projects, plans and colour schemes. GJC LTD will provide you with ideas and solutions to make sure they deliver the best service and workmanship.

We have also welcomed a new general manager to our team, Darren Holden with years of experience in different management roles.

Grant Jenkins Contracting are award winning Master Painters 2011 and 2018. Also, they are now registered Master Plasterers and Master Wallpapers, which is new to the industry.

Another success this year! The gib stopping, painting and decorating team at Grant Jenkins Contracting recently picked up a New Zealand Category award for a beautiful house in Mt Cook as "Residential New Work Interior" at this year's Master Painters Awards in Rotorua.

Grant Jenkins Contracting approach every job with a thoroughly professional attitude and the knowledge and expertise to provide a high quality finish in every aspect of their trades.

Whether it's a feature wall or a full renovation Grant Jenkins Contracting have the team for you. Call for a quote 03 688 8630, www.grantjenkins.co.nz



P: 03 688 8630 E: grant@grantjenkins.co.nz www.grantjenkins.co.nz

Paint and accessories proudly supplied by

## WATTYL PAINT CENTRE TIMARU

9A BUTLER ST, TIMARU  
Ph: 03 688 9872

**wattyl** PAINT CENTRE

the paint the professionals use



## LUXURY GIFTS FOR EVERYONE

\$19.99	\$48.99
\$26.99	\$29.99
\$64.99	\$64.99
\$23.99	\$26.99
\$530	\$19.99
\$70.99	\$10.99
\$15.99	\$10.99
From \$9.99	From \$26.99
\$39.99 each	\$29.99
\$39.99	\$104.99

Unichem Timaru Pharmacy 278 Stafford Street  
Phone: (03) 688 8069 Fax: (03) 688 8068  
Your local health professional

## Christmas has arrived

\$169

At Ashbury Pharmacy, our friendly and experienced staff provide a variety of services from dispensing prescriptions to all of your health, beauty needs and gifts.

\$199

\$29.99	\$22.99	From \$29.99
\$36.99	\$8.99	\$10.99
\$31.99	\$11.99 each	\$26.99
\$24.99 each	\$20.99	\$9.99 each

ASHBURY PHARMACY

Northtown Mall,  
98 Evans Street, Timaru  
Ph (03) 688 9736



**The Accessory Shop**

268 Stafford St, Timaru  
www.accessoryshop.co.nz  
Ph (03) 684 5220

**NZ Artwork & design**

Coin purses, leather wallets, card holders, bags, sunglass cases and phone bags.

Come in and see all on display.  
Painting by Angie Dennis.



Pomodoro Floral Border Dress \$225



Chocolat top \$289



Yesadress Evening Dress \$205

Frank Lyman Pleated Pants \$229



Holmes & Fallon Jacket \$155



Beau Beaded Earrings \$39

**FASHION FOCUS**

Highfield Mall, Wai-iti Road, Timaru  
Ph (03) 688 8711  
www.fashionfocus.co.nz



Caroline Abram \$699

Kate Sylvester \$449

Pro Design \$549

Res Rei \$649

Vera Wang \$549

Woodys \$449

**CANON STREET OPTOMETRISTS**

26 Canon Street, Timaru  
Ph (03) 688 9791



**Fashion for Cure**

'One woman every three hours will be diagnosed with breast cancer, nearly two women per day will die from the disease.'

Breast Cancer Cure was established solely to find a cure for breast cancer. They host several fundraising events throughout New Zealand. Choosing only the most luxurious locations for a fabulous night out, dinner, drinks, goody bags, auction & fashion show.

The shows are fun, but have a strong message about the reality of breast cancer, there are many tears when the hard hitting facts are shared as we all have mothers, sisters, aunts, daughters, neighbours or colleagues who could be or have been affected by this.

The fashion part of the evening is the highlight, featuring premier designers: Zambesi, Trelise Cooper, Storm, Augustine, Rodd & Gunn & many more!

Auckland kicked off a great season raising \$106k! The historic Saatchi & Saatchi building, had models coming from

a glass elevator and vast staircases.

Felicity Bruce from Cocoon Hair Design is Joico's Creative Hair Director for all of the NZ shows. 'It has taken me to some incredible venues and I have met some amazing people'. Felicity works with BCC & the designers to customise looks for each show, she builds a local team of stylists for the backstage prep and is on hand to tweak any mishaps during the fast changes. 'NZ has been leading the world with healthy models, diversity & it's just normal to see a size 8 & a size 16 in the same show.' 'It's been such a buzz to be travelling again, especially to go to places like Mt Maunganui! I'm just so grateful for the support of my salon team & clients while I have been away.'

There are 3 more sold out shows, Queenstown, Christchurch & Mt Cook.



Flower Motif Tee \$59

Wanderlust Skirt Navy Spot \$179

Long Sleeve Opal Top \$179

Opal Top \$169

Melody Top \$179

Wanderlust Skirt \$179

**ORLANDO FASHION**

175 Stafford Street, Timaru  
Ph 0800 FORSTYLE  
online & stockists  
www.orlandofashion.co.nz

**NO EXCESS and CUTLER clothing has arrived**

We are truly chuffed with it all but...when it's gone it's gone.

Stretch denim, T's, Shirts, tops, pants and great shorts. Summer sport jackets too



285 Stafford Street, Timaru • Ph 03 688 4880 • www.macshaw.co.nz



**Cocoon Hair Design**  
Shop 20, Royal Arcade, Timaru  
(03) 688 8841

**Do you know the road code?**

Test your knowledge



- 1 The maximum speed limit past a stationary school bus is \_\_\_\_\_ km/h?
- 2 You approach a bend on the road that has an advisory speed sign lower than the 100kmh speed limit on the road, you should \_\_\_\_\_.
- 3 When you are being passed by another vehicle, move as far to the \_\_\_\_\_ of the road as possible.
- 4 When driving at dusk, dawn or low light conditions, turn on the \_\_\_\_\_.
- 5 If your car was first registered before 1 January 2000, when must you renew its warrant of fitness? Every \_\_\_\_\_ months.
- 6 What is the maximum legal speed limit for a car towing a trailer on the open road? \_\_\_\_\_ km/h.
- 7 The \_\_\_\_\_ the speed the bigger the mess.
- 8 Whenever you feel sleepy/tired when you are driving \_\_\_\_\_.
- 9 You are driving down the road and notice a pedestrian about to walk onto a pedestrian crossing (zebra) ahead, you must \_\_\_\_\_.
- 10 Roads do not kill, \_\_\_\_\_ do.

**Be in to win a double movie pass each week for the month of November**

Name .....

Address .....

Phone .....



Do it online  
https://qrs.ly/ipc1xv3

**Closing date: 29 November**

**Send your answers to:**  
Timaru District Council – SCRS  
PO Box 522, Timaru 7940

Or take a photo (no larger than 3 MB) and email to:  
Daniel.naude@timdc.govt.nz



# Birthday Specials!

WAREHOUSE LIQUOR

Valid until  
23 November  
2020



Teachers Scotch Whisky 1L \$33.99



Riverstone Wine Range 750ml \$8.99



Smirnoff Vodka 1L \$35.99



Speights Summer Ultra Low Carb Lager 24 Pack \$33.99



Gordons 3 flavors 12 pack 250ml cans \$22.99



Malibu Passion Fruit cans 250ml 4 pack cans \$9.99



Somersby Cider 12 pack bottles \$22.99



St Remy Brandy 1L \$38.99



Brown Brothers Australian Tawny 750ml \$19.99



Baileys Red Velvet Cupcake 700ml \$29.99

35 Browne St, Timaru | P 03 688 1012  
www.warehouseliquor.co.nz



## Rose Festival will be Blooming Amazing

The Festival of Roses is set to launch a revamped festival to be held on 4th, 5th and 6th December.

'Blooming Amazing' is the award-winning show of Christchurch based costume and fabric artist, Jenny Gillies. The Exhibition of her treasured collection will run daily on Friday, Saturday and Sunday in the Caroline Bay Hall. Entry is \$5 per person with school children and pre-schoolers free.

Jenny Gillies will talk about her experiences at 11 am on Saturday and Sunday in the Caroline Bay Hall.

On Friday and Saturday evenings, **The Wearable Flower Show** a dazzling catwalk parade.

Tickets are \$30 per person and available from iTicket.co.nz, Newman Music Works or the Timaru Information Centre.

Also in the Caroline Bay Hall will be the magnificent colour, splendour

and bouquet of the Rose Show and an exhibition of local embroidery.

The free Sunday market is all about browsing and Christmas shopping, eating and relaxing with all-day entertainment and featuring top international street food stalls to transform the Bay and the Gardens into a food lovers' paradise.



**Sunday Market Day, 6 December**, from 10 am on the Bay.

Santa and friends in this year's Timaru Christmas Parade join in the Festival fun and make their way to Caroline Bay from Stafford Street from 2 pm.

Follow the parade to the free family-friendly Rose Festival Market, say hi to the Ballantyne's Santa and meet his friends from the parade. Caroline Bay Association rides will be running.

Look out for more Rose Festival activities on the website [www.festivalofroses.co.nz](http://www.festivalofroses.co.nz)

# Rose Festival

Timaru Festival of Roses

**FRI 4, SAT 5 & SUN 6 DEC**  
Market Day Sun 10am-4pm

**FREE ENTRY TO MARKET**

**JENNY GILLIES Blooming Amazing**  
THE WEARABLE FLOWER SHOW  
7pm Friday 4 & Saturday 5 Dec

Tickets \$30 @ [iticket.co.nz](http://iticket.co.nz) + Booking Fee

TRUST AORAKI | Pub Charity | the Southern Trust | Venture Timaru | TIMARU DISTRICT COUNCIL

[www.festivalofroses.co.nz](http://www.festivalofroses.co.nz) | [www.facebook.com/RoseFestival](http://www.facebook.com/RoseFestival)

# Christmas has arrived at

MAREE HYNES GIFTS & INTERIORS

Beautiful festive stock is filling the shelves at Maree Hynes Interiors. Whether you are searching for unique gifts or quality Christmas decorations they have you covered. Take advantage of their free gift wrapping service.

**Late night shopping is back at Maree Hynes Interiors on Wednesday November 25th. The store will be open late with amazing specials and spot prizes on the night.**

Get your home ready for the holidays with gorgeous new furniture. Stock is limited so be quick and get yourself in the draw to win a \$1,000 voucher to spend at Maree Hynes Interiors, T&Cs apply. A special Christmas evening will be held on Thursday 10th December and you have to be present at the draw to win.

Support your locally owned and operated design store this Christmas and be in to win.



15% off selected roller blinds

Free make on selected fabrics

Coming soon...



Tan Armchair - Coming back into stock  
Mustard Velvet Dining Chairs - \$355

Spend \$500.00 in store and go into the draw to

# WIN \$1,000

Maree Hynes Interiors voucher

Winners to be announced Thursday 10th December  
Mon 21st Sep - 10th December



19 Theodosia St, Main Rd (opposite Ara Polytech) Timaru  
Servicing High Country, Mid and South Canterbury areas.  
Locally owned and operated

Phone: 03 686 6784  
[www.mareehynesinteriors.co.nz](http://www.mareehynesinteriors.co.nz)  
Follow us on Facebook & Instagram



# ASK AN EXPERT

If you have a question you would like our panel of experts to answer please drop us a line at [pat@essencemagazine.co.nz](mailto:pat@essencemagazine.co.nz)



## Renae McClenaghan

Renae is General Manager and Finance and Insurance Specialist at Autoworld Timaru with over 14 years' experience in the finance and insurance industry.

The difference between four-wheel drive (4WD) and all-wheel drive (AWD) can be confusing. All vehicles have four wheels, so surely both terms mean the same thing? Not quite. With major differences in each system, it's important to learn what type best suits your lifestyle.

### AWD

If you spend most of your week in town but enjoy a mountain tramp over the weekend, AWD is for you. Perfect for helping you out of slippery conditions and providing extra power only when necessary is AWD's jam. It's also celebrated for its practicality and fuel efficiency.

The AWD system is mostly controlled by computers, meaning you won't need to think – or anticipate – when you might need an extra boost, as your vehicle will do it for you. Typically, an AWD system will change between

powering two or four wheels, depending on where traction is needed. On wet or slippery roads, you'll have more traction than a front- or rear-wheel-drive.

AWD is ideal for those who live around town, but sometimes need a little extra push.

### 4WD

4WD is intended for more extreme conditions, with lots of off-road driving. 4WD systems work to keep wheels engaged, helping vehicles out of ultra-slippery conditions. 4WD offers a chance for more driver input, which makes it more suitable for tougher terrain.

It's important to note that 4WD is not intended for paved roads, and this can actually damage the vehicle and sky-rocket fuel costs. If your vehicle is used specifically for tougher terrain, like hilly farmland or dirt mountain roads, 4WD

is for you. If you intend to take it elsewhere often, AWD is a better option.

Whether you're considering a run-around-town car or one that'll ford rivers and climb mountains, it's worth understanding the difference between 4WD and AWD. Being realistic about the expectations of your vehicle, and your lifestyle, will be a great part in helping you make the right decision for you.

These systems can vary based on manufacturer, so talk to a sales team member about what suits your needs best.



6 Sefton Street, Timaru  
Ph (03) 683 1215 or 0508 AUTOWORLD  
[autoworldtimaru.co.nz](http://autoworldtimaru.co.nz)



## Jacqui Fraser

Whether you are a First Home Buyer, Property Investor, checking your Mortgage health or just want to know more, talk to me about how I can help achieve your goals. With the support of Mortgage Express and their Providers, I have the resources and flexibility to customise my services, ensuring clients have the best opportunity to get a tailored solution that works for their individual situation.

### Q. How can a Mortgage Express Adviser Help?

- I can guide you through the process of buying your first home, the benefits, and risks of utilising a First Home Grant and First Home Loan.
- Assist in finding out how much you can borrow.
- Arrange a pre-approval for Finance before you make an offer or bid at Auction.
- Advise which bank can offer the most appropriate loan for your individual situation and needs.
- Compare your existing lender against many other options in the market.
- Assist you with a loan structure that suits your needs.
- We can advise you on your insurance needs and give you a no obligation review of your insurance, and not charge you for that service.

### Q. How much will this cost me?

Mortgage Express Advisers are paid by the lending institutions which in most cases means there is no cost to you and no surprises. This in no way affects the rate options that we get from the Banks, the Banks view us as another channel of business for them and are happy to pay us to provide this service.

### Q. What is the difference between going to a Mortgage Express Adviser and going to a bank?

Mortgage Express, through its panel of 20+ lenders, has access to a wide range of loan options for people buying a new home, buying a second home or investment property, buying land, building a home, or refinancing.

### Q. What ongoing support do Mortgage Express Advisers provide?

Your Mortgage Express adviser will

- Have regular contact to ensure the loan structure continues to work for your situation into the future.
- Provide assistance with refix rates and loan structures in the future.

Even after your successful mortgage transaction, Mortgage Express Advisers are a great resource for advice, queries, or future referral needs.

A Disclosure Statement is available on request and free of charge.



12 Church Street, Timaru  
Ph 027 529 7925 | [jacqui@mx.co.nz](mailto:jacqui@mx.co.nz)  
[www.mortgage-express.co.nz](http://www.mortgage-express.co.nz)

# Get in early: make sure your winter firewood is 'good'

*We know it may seem counter-intuitive to look forward to the freezing temperatures of winter as we emerge into a glorious spring, but if you are planning on using a wood burner to heat your home in Winter 2021, Spring 2020 is a perfect time to buy your firewood and beat the rush.*

*Environment Canterbury Timaru operations manager Judith Earl-Goulet has some tips on what to look out for and what to avoid, to ensure your wood is 'good'.*

### Earlier is better

Buying wood early allows time to dry your wood before using it and is usually cheaper. Generally, it takes 1-3 years for wood to dry properly, so if you're buying wood to use next winter it needs to be pre-dried or seasoned.

Burning wet wood is not an option as it won't get hot enough to produce efficient warmth in your home and it leads to smoky chimneys and air pollution.

### Buy from a reputable source

We recommend buying from a wood merchant which is part of our Trusted Good Wood Merchant programme. Merchants are audited annually and testing the moisture content of their wood supply is part of this process.

They usually have a good supply of dry, seasoned wood. If not, they will ensure their customers know how 'green' the wood is and when it should be ready for use.

### Choose a 'better burning' wood

Do you know what wood burns hottest and with the least amount of smoke? Plantation Pine, Douglas Fir and Blue Gum are the best woods to use and mix to get your fire just right.

Old Man Pine tends to smoke a lot, so we recommend you use this only for kindling and burn it with other wood.

### Finally...

- Store your wood under cover and allow air flow. A small woodshed is great, or under some eaves or along a fence line.
- Keep your wood burner well-maintained and look after your chimney and flue to remove build-up of soot. Again, now is a great time to get your chimney/flue cleaned and beat the Autumn 2021 rush!
- If you're thinking about replacing your existing wood burner, now would be a good time to make enquiries with local suppliers and fitters.

*For more advice on choosing good wood and burning better, check out [warmercheaper.co.nz](http://warmercheaper.co.nz), to help you burn smoke-free, including demonstration videos and a step-by-step guide, along with a list of Trusted Good Wood Merchants. You can also get in touch with us for personalised help and support by calling 0800 329 276.*



## Peter Herron

We have been in business since 1985 covering the South Island. With 10 highly professional employees, we have more than 200 years combined experience.

### What is the focus of your business?

The main focus for us is to provide a quality service with customer satisfaction and with using our expert team of qualified installers we achieve this with ease. With having come through the recent shutdown we have downsized. By doing so we have found that we are now providing a better quality installation experience.

**Are you still locally owned?** Yes we are still locally owned by myself and Rosa (Madam Mat), we solely own the business and don't have any 3rd party interference. This means that what we say we will do for our customers is exactly what they get and not some watered down promise.

### What areas do you work in?

We work in all areas of the South Island with a branch in Dunedin. Bluff to the Sounds, East Coast to the West Coast, we cover it all.

The demand for our highly skilled tradesmen increases everyday. I only just had a phone call the other day from a retailer stating he prefers to use us because he knows the job gets done properly and there are no hassles.

**Does the final price include carpet, underlay and installation?** Yes the price is the price with no hidden extras that some of the larger retailers add on after the quote is accepted and their installers have started the job. We include everything that can be seen that needs to be done, if it's a new concrete floor that is having vinyl installed over it we allow to prepare it after the other trades have worked over it, not add it on as an unforeseen extra. It pays to check that your quotes are apples for apples, most carpets have all the relevant information on the back of the samples and if not they can be found on the internet.

**What carpet should I pick?** Carpets come in all different weights and materials, we have carpets made from waste materials/byproducts, whether they be Wool or synthetic or whatever is going to be the next best thing - choose carefully as your carpet will be with you a long time. The more knowledgeable retailers will have product information to back up their recommendation for your house and every house is different, who lives in the house, how many, pets, indoor outdoor flow, sun direction. There are many considerations



17 Butler St, Timaru. Ph 021 370 750  
[info.peterherronflooring@gmail.com](mailto:info.peterherronflooring@gmail.com)



## Tony Shaw

Tony Shaw is a lawyer at Timpany Walton. While Tony's focus in more recent years has been on general commercial work, relationship property matters and employment law, he still fields a range of questions on criminal matters.

### One of the most commonly asked questions is: how can you represent a person who you know is guilty?

It is not the role of defence counsel to make a judgement call as to whether a client is innocent or guilty. That is the role of the judge or jury. Counsel must act on instructions from the client, and in doing so must advocate for the best possible outcome, irrespective of any personal view as to the guilt or innocence of the client.

If a client has indicated that they are guilty of the charge, but still wish to plead not guilty and put the prosecution to proof, defence counsel can still represent the defendant but cannot do anything or ask any question in the trial which suggests the defendant did not do what is alleged. To do so would breach the rules of professional conduct which impose an absolute duty of honesty to the court, and

which clearly state that the lawyer must not mislead or deceive the court.

### If a defendant successfully defends a criminal prosecution, can the court award them costs?

The Costs in Criminal Cases Act does allow a court to award costs but the court is required to take a number of circumstances into account. These include whether the prosecution acted in good faith, whether there was sufficient evidence at the outset to support a conviction, whether the prosecution took proper steps to investigate the matter and whether the investigation was conducted in a reasonable and proper manner.

It is relatively rare for a court to award costs.

### Why do some judges appear so lenient when sentencing defendants?

In my opinion, judges are neither too lenient

nor too harsh. When sentencing defendants judges have before them all the facts of the case and often considerable background information about a defendant. What gets reported in newspapers is often just a brief version of the most serious allegations against the defendant. Once all the facts are known and all relevant considerations taken into account, most right-minded members of the public would agree that in 99% of cases, the judges get it right



The Landings, 1st Floor,  
Corner SH1 & Elizabeth Street, Timaru  
Ph (03) 687 7126 [www.timpanywalton.co.nz](http://www.timpanywalton.co.nz)



## Briony Woodnorth

Briony has been the Zero Waste Advisor with the Timaru District Council for 24 years. Briony educates the public, schools and businesses about the importance of recycling and sustainability in our world today and into the future.

### What does Zero Waste do for South Canterbury?

I can only speak for the Timaru District, but if we had not instigated the three bin system in 2006, Redruth Landfill would have been full two years ago. Thanks to the commitment of our community, this asset now has a remaining life of over 28 years! Of course, the more resources we divert from landfill, the longer all the assets will last...

### What can I do to make things easier for Zero Waste?

Remember that all your little bits count! Each dirty tissue to green, each clean can to yellow all makes a difference in the long run. The government is guiding us to a Circular Economy, and the only real way of getting

there is to recognise 'waste' as what it truly is: misused resources. Consult Council's 3 Bin Guide if unsure, or give us a call on 03 687 7200. Don't forget that there are many items you can drop off for free at all our transfer stations: check out [www.timaru.govt.nz](http://www.timaru.govt.nz)

### What's the worst thing in the yellow bins that should not be there?

Dirty nappies! Please remember that your yellow bins are sorted out by 7 human beings, in a noisy and difficult environment. Please show your consideration for their job by making sure that your recycling is clean and that you only recycle things we can accept – dirty nappies MUST go in the red bin; although if you are interested in reusable, modern cloth nappies, give me a call 03 687 7489.



We welcome questions on 03 687 7489, or email [briony.woodnorth@timdc.govt.nz](mailto:briony.woodnorth@timdc.govt.nz)

**Now's good for wood!**

Buy your good wood now, so it's dry for a smoke-free winter.

Get yours from Canterbury's Trusted Good Wood Merchants.

Find out more at [www.warmercheaper.co.nz](http://www.warmercheaper.co.nz)

Get it sorted early - it'll be cheep...er!

If you're not sure about your burning, don't let it ruffle your feathers! Get in touch and we can help you sort things out.

Environment Canterbury Regional Council  
Warmer Cheaper

# 4 STEPS TO YOUR DREAM KITCHEN

A new kitchen has never been easier with expert advice and these great benefits.



We are here to help you create your dream kitchen. Book a free in-store consultation today and our friendly kitchen designers will give their expert advice, design a 3D render of your kitchen, and work continuously with you throughout the project to make sure you and your family have a kitchen you will love.

- Free design service
- 10-15 year warranty
- Soft close drawers and doors
- NZ made cabinetry
- Flexible finance options

Book your FREE kitchen consultation at [mitre10.co.nz/booking-tool](https://mitre10.co.nz/booking-tool)



**ASHBURTON MITRE 10 MEGA**  
West Street, Ashburton  
PHONE 03 308 5119

**TIMARU MITRE 10 MEGA**  
23 Bank Street, Timaru  
PHONE 03 687 2033

**OAMARU MITRE 10 MEGA**  
Dee Street, Oamaru  
PHONE 03 434 9860

**MITRE 10**  
**MEGA**