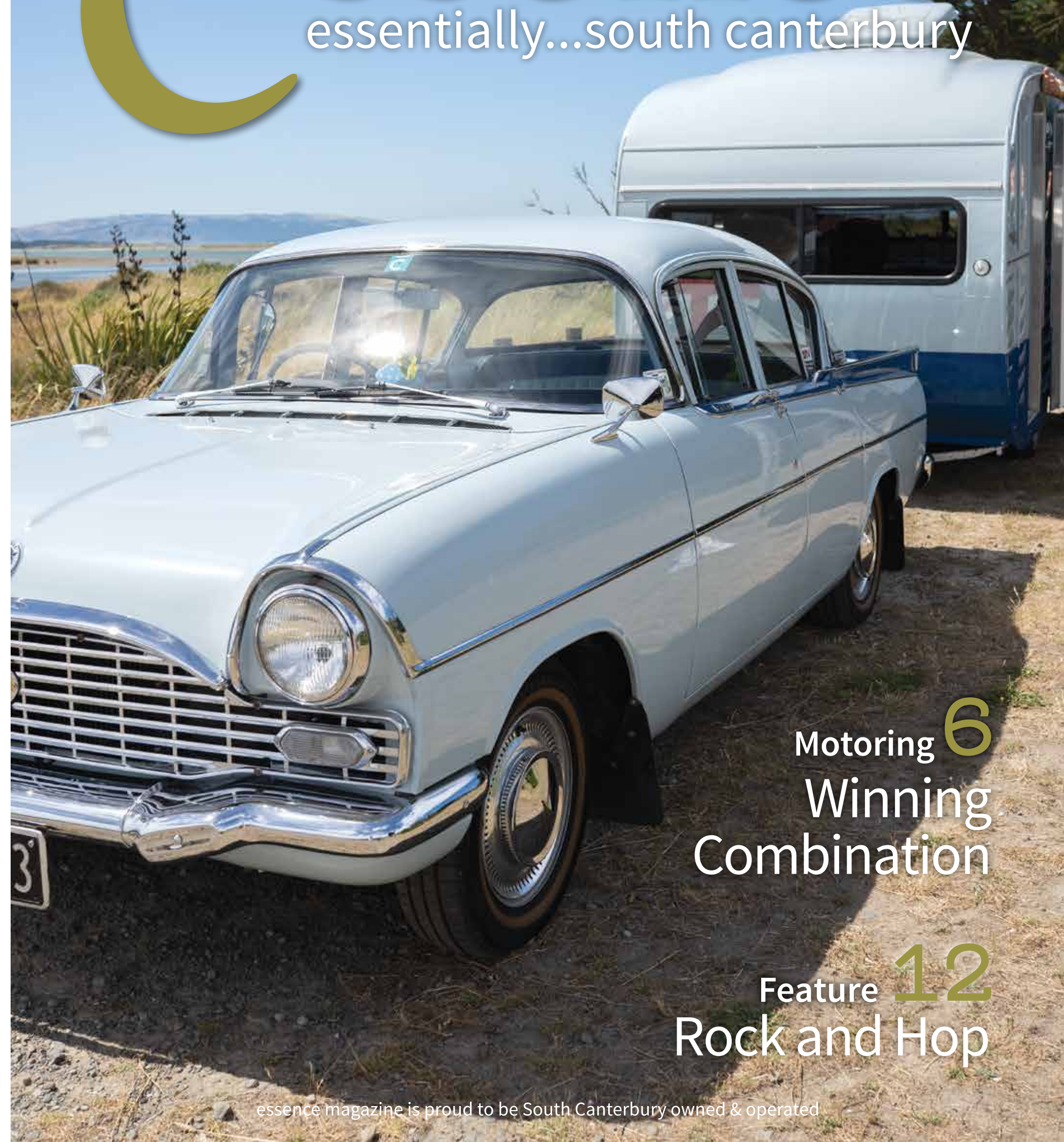


essence

essentially...south canterbury



Motoring **6**
Winning
Combination

Feature **12**
Rock and Hop

GET THE LOOK

Love Shopping? Then Shop Local for the greatest benefit. Our region has some superb stores, offering all sorts of unique items to generate interest and conversation. From standout trinkets to staple pieces; rugs, lamps, cushions, vases and artwork! You name it, it can be found somewhere near you.

Tievoli Trading
Inga Ford Soap Range \$9.50

Brass Clock \$369

Cow hide mini ottomans \$399

Cross legged cow hide ottoman \$735

Cushion \$72

Teak Cubes for Display or used for side tables. Set of 3 \$950

Tievoli Trading
72 - 76 Talbot Street, Geraldine (old Barker's Shop)
Phone 0274 313 362 or visit us on Facebook

RON BROWN JEWELLERS LTD
EST. 1949

RETIREMENT SALE

The big retirement sale is on now, Stephen and Diana are retiring so come in and see our amazing jewellery and bargains.

Diamond Rings on sale

9ct White Gold Oval Diamond Cluster Ring Total diamond weight 0.45ct Was \$1,600 **NOW \$800**

18ct White Gold Pear Shape Diamond Ring total diamond weight 0.52ct Was \$4,995 **NOW \$2,497**

9ct Yellow Gold Topaz ring was \$1,990 **NOW \$1,490**

18ct White Gold Princess and Trilliant Cut ring Total Diamond weight 0.93ct was \$8,995 **NOW \$4,495**

18ct White Gold Round and Baguette Diamond Ring Total diamond weight 1.50ct was \$3,850 **NOW \$1,925**

304 Stafford Street, Timaru. Ph (03) 688 9835
www.ronbrownjewellers.co.nz

HOPKINSONS

The friendly team at Hopkinsons welcome you to visit their store full of beautiful furniture and homewares. While you are there take the time to enjoy a coffee and something to eat from Cafe Pharlap. NZTA & NZ Post Agency.

The **COUNTRY OAK** collection and painted furniture just arrived instore

Open 7 Days
Cnr Seadown Road & Hilton Highway, Washdyke
Ph (03) 688 7662 www.hopkinsons.co.nz

contents

As I write this we are nearly in March – where does the year go? If you feel the same, perhaps it's time to slow down and de-stress – so check out our Body & Soul page this issue. I am seriously tempted by the idea of trying a meditation session and if you feel you could do with a little time to slow down then check out the details on page 8.

One thing that is looming large in the coming weeks is the Rock & Hop event in Timaru. It really is a great event on the calendar and raises funds for a cause so close to many our hearts – Hospice South Canterbury.

So this month we caught up with some of the people getting ready for the Rock & Hop – from car enthusiasts to stallholders and a lady who pulls out all the stops when it comes to her outfit for the day. It takes a lot of work to get ready for a big event like this and we were impressed and inspired by the dedication people put in. You can check out the stories from page 13.

And if cars and caravans are your thing you're going to love our story on the Winning Combination (page 6). Writer Grant Shanks caught up with the John and Sheryl Glass, winners of the Best Car and Caravan at the 2018 Rock & Hop. They tell how the 1959 Starliner caravan was neglected in a shed when they first found it.

Rock & Hop is such a great showcase for our region and the fabulous personalities, businesses and hearts that come together to make it all happen. I hope you enjoy reading about it as much as we enjoy bringing you these stories.

Have a great month - Pattie

contact us: Dorothy McLennan - Publisher
dorothy@essencemagazine.co.nz
Ph: 0274 507 532

Pat Naude - Advertising & Business Manager
pat@essencemagazine.co.nz
Ph: 022 684 5974

Liz Bell - Advertising Co-ordinator
liz@essencemagazine.co.nz
Ph: 022 176 4349

Larnya Bourdot - Graphic Designer
larnya@essencemagazine.co.nz
Ph: 027 525 8649

Published by **Essence South Canterbury Ltd**
Opinions expressed in Essence Magazine are not necessarily those of Essence South Canterbury Ltd. No responsibility is accepted for unsolicited material. No material may be reproduced without prior written permission of the publisher.

22 Chapel Street, Timaru, South Canterbury. Ph: 03 684 8439 | www.essencemagazine.co.nz

Make your own Rock 'n Hop outfit!

Create a dress from 'Gertie' fabrics, a circular skirt from florals or spots and even a shirt with cars on it. Add a ribbon to your hair or embellish a cardigan...



Visit Timaru Sewing Centre for further inspiration!

TIMARU SEWING CENTRE

158 Stafford Street, Timaru • Ph/Fax 03 688 6764 • www.timarusewing.co.nz

Modern Lifestyle Living

Whether you're more inclined to enjoy the company of others, or prefer privacy and solitude, you'll find the perfect lifestyle here. Architecturally designed villas and apartments available NOW.

33 Connolly Street, Geraldine
P 0800 845 524 or 03 693 8340
E sales@mlv.org.nz
www.mlv.org.nz

MCKENZIE Lifestyle Village
GERALDINE

ACCREDITED VILLAGE OF THE RVA



Front Cover: 1961 Vauxhall PAX & 1959 Starliner Car and Caravan combo, Photography; Carmen Peter Story page 6.

Need an extra copy of essence magazine?

We have stands located at

- Sopheze on Stafford Street
- Northtown Mall opposite Sticky Cafe
- Outside Cobblers Inn at Highfield Mall
- Our office - 22 Chapel Street, Timaru
- Mint Boutique Fairlie

Your trusted local builder for new homes and renovations in the Mackenzie area

HIGH COUNTRY Carpentry
BUILDING & RENOVATIONS

- New Architectural Homes
- Renovations
- Log Homes
- High Country Cabins
- Farm Buildings
- Light Commercial

Iain & Heather Hellenrich
Directors, High Country Carpentry

mb MASTER BUILDERS
Email: admin@hcclimited.co.nz
Office: 1 Gell Street, FAIRLIE 7925
www.highcountrycarpentry.co.nz

0800 922 883



Understanding crop residue burning

Late February means the start of crop residue burning season is upon us. This practice is also known as stubble burning and is an important practice for arable farmers. However, the impacts of these burns can be far-reaching and can negatively impact people several kilometres away from where the burn is located, with reports of 'out of control' fires and concerns about smoke, ash and visibility, common through the late summer.



like Waimate where the geographical landscape means the smoke gets 'trapped' and sits over the town.

Brian Reeves is Environment Canterbury's Southern Zone Delivery Lead. He explains that with several agencies involved, it's important to join forces to provide guidance and information to both those who undertake crop residue burning and those impacted by it, to address frequent misunderstandings about what is or is not acceptable.

Why crop residue burning?

Crop residue burning plays an important role in New Zealand's cropping systems and is a permitted activity under the Canterbury Air Regional Plan, except in two buffer zones around Timaru and Ashburton where a resource consent is required.

The practice is a quick and economic way of dealing with crop residue which has less environmental impact than alternative methods. It is also an effective, non-chemical means of weed management and can contribute to pest and disease control.

What's the problem?

In certain conditions and weather, the smoke from these burns can travel beyond the property boundary, causing a nuisance effect for those in nearby towns. This can be particularly troublesome for towns



Dorothy Woos the Crowd

On Wednesday 3rd of February, Dorothy was invited to speak in front of the Lions Club Timaru. This was a night touching on the history of essence, how it came about and a little bit about our team here in South Canterbury. What a great night!



1. Aaron and Teresa May 2. Alec Darling 3. Brian Cosgrove 4. Marie Dey 5. John Doggett, and Graham Woods 6. David Galloway 7. Jack and Yanni Dijkstra 8. Neville Carpenter and Katherine McCreanor

March whats on...

PLEASANT POINT MUSEUM & RAILWAY

7th March - a popular Steaming day with a steam locomotive pulling the train and the 1925, Ford Model t replica rail car operating. 10.30am to the last train at 4pm.

Easter is just around the corner and we will be operating on the 3rd, 4th, & 5th of April with our very popular "Kiwi the Engine & Friends". 10.30am to the last train at 4pm.

HADLOW TO HARBOUR FUN WALK, JOG, RUN

Sun 7 Mar 2021, 9:30-11:30am
91 Hadlow Rd, 91 Hadlow Rd, Hadlow, Timaru

Choose to run, jog, or walk the full 10km course from Hadlow Road, or the shorter 3km stage from Countdown car park in Church Street to the HarbourFront and on to Caroline Bay for festive prize giving. There are great prizes and groups are encouraged to enter and gain their own sponsorships for their own fundraising. Free buses run to Hadlow from Caroline Bay skatepark (northern car park).

MEDITATION

Tuesday 9.15am
silence only

Wednesday 7.30pm
guided & silence

Thursday 9.15am
guided & silence

Friday 7.30pm
sound & healing

Saturday 9am
silence only

Sessions by \$5 donation
to Nepali Orphan Fund
Artma Spiritual Gallery
Royal Arcade Timaru
03 686 9878

MADAM MAT Mat Binding Specialist



Located in the
Peter Herron
Building
17 Butler St
Timaru
03 688 3876

Shop Hours
ONLY OPEN
Tues, Weds, Thurs
11am-4pm

SPF

- WEBSITE
- DESIGN
- ONLINE MARKETING
- SEO



Timaru, 03 688 4088
www.spfcreative.co.nz
www.spfwebsites.co.nz



The Breeze Diamond Drop

The chance of winning a \$3,000 diamond from The Ringmakers drew a crowd of around 2000 people to The Breeze Diamond Drop at Ashbury Park on Sunday 14th February.

For a few seconds, it rained confectionery as 2021 pink and white marshmallows were dropped from a helicopter. A single cubic zirconia hidden inside just one marshmallow had to be found and presented to the organisers to claim the diamond.

Leah McMinn, aged 4, was the lucky winner and was presented with her diamond by OJ from The Breeze and Brent White from The Ringmakers.



Elloughton Retirement Village

Open Home

Saturday 27 February
11am - 12pm

Brand new, architecturally-designed, 2-bedroom villas, priced from just \$390,000.

 We will cover your moving costs when you purchase a villa. T&Cs apply.

Independent retirement living
With advanced care options on site

Leave no pet behind
Your family pet is welcome here

Peace of mind
St John medical alarm in every home

Brand new villas
With leading brand appliances

Discover inspired living at Elloughton Village.

Call Ana now on 0800 155 155

www.elloughtonvillage.co.nz
1 Pages Road, Marchwiell, Timaru 7910

Our Village sales office has more information and is open from Monday to Friday. Bookings for tours are essential.



A WINNING Combination



John and Sheryl Glass are winners, and in more ways than one.

Former top smallbore shooters, Sheryl has won multiple International titles and medals in NZ, Oceania, Britain and competed at Commonwealth Games & World Cup level, while John has held and still does hold records at National and Provincial levels, and has also competed at World Cups. However, they are winners in another completely unrelated area - namely the automotive one. A car salesman and panel beater by trade, John is largely responsible for this fantastic car/caravan combination.

This stunning pairing was the winner of Best Car and Caravan at the 2018 Timaru Rock & Hop Show, and there's a lot of history behind them, as John explains. "The Vauxhall PASX is the 1961 version. It was purchased by Sheryl's father, Doug Findlater in 1973 however, years later when he got company cars, the Vauxhall spent about 35-years quietly rotting away in a cellar in Dunedin."

Upon Doug's passing what had been the family pride and joy for many years, Sheryl felt it would be a great tribute to Doug to restore it and asked John if he would do the honours. What followed was a nightmare vehicle retrieval from one of Dunedin's steepest streets, Montague Street, two over from Baldwin Street, the world's steepest street on record.



"We had no brakes and used bricks in front of the wheels to ease the Vauxhall out a brick at a time so we could trailer it. It was a pretty hairy operation," John recalls. "The

engine was totally seized up and no amount of coaxing could free the pistons. Eventually, the pistons were cut out and as a result the engine capacity was increased a wee bit over its normal 2.6 rating."



After about a year in which John did all the restoration work and panel beating, Ashley's Peter Bachelor added the glorious paint job.

John stripped the caravan down to its bare bones and rebuilt it, doing all the bodywork himself. A year later and with another visit across the river to Ashley, the little 12-foot caravan was complete and a perfect match to the



Vauxhall. "It's not just for show," John says. "We use it and in fact we've taken them on a run as far north as Tokomaru Bay north of Gisborne."

While John and Sheryl haven't got any plans for another caravan run in the near future, they will be attending the next Caroline Bay Rock and Hop.

Keep an eye out for them.



The Yellow Door Café

This new fresh and vibrant café at 332 Stafford Street - where the Purple Lizard used to be - opened in October 2020.

Jason Russell purchased the café in August and after redecorating it, he renamed it The Yellow Door. He told me that the colour 'yellow is supposed to be good for you' and hence the name, as he wanted his food to be bright and fresh. The café obviously has yellow doors and the rest of the décor is mainly white with paintings of NZ native plants and maori art on the walls.

Signature dishes include the seafood chowder which is packed with goodness, including cockles and mussels (still in their shells) and seaweed. Another good healthy choice is the goodness bowl - avocado, cherry tomatoes, hummus, beetroot, haloumi, poached egg, cream cheese and dukkah served on kumara rosti. There is also golden fried chicken, smoky beef cheeks, a garlic, prawn and seafood pasta and more. Jason likes to be creative and for his menu to be different from the other cafés and restaurants in town. On Waitangi Day he served a hangi, cooked in his hangi kai cooker and he is hoping to introduce more maori options, using native herbs. Maybe opening three evenings a week is also on the agenda, because Jason is missing cooking evening meals!

Jason has had a wealth of experience with food over the last thirty years. He has cooked since he was 17 and he has



had a wide variety of foodie jobs. His early mentors were Karl Coe and Lindsay Bennett, who tutored him at the then Aoraki Polytechnic and taught him the skills of fine dining and competitive cooking skills. He gained catering experience and hotel service at the Hotel Grand Chancellor in Christchurch. One memorable experience here was cooking for the dignitaries at an APEC Conference where he was the head chef, having to serve 1,000 crayfish as the entrée! He then went to Queenstown, again with Karl Coe, where he learned about catering

for the tourist clientele. His next stints were at Ginger and Garlic and Monteiths in Timaru, then at the Merrin Street Café in Christchurch.

He has won several awards and after 30+ years working for others, he jumped at the chance to open his own café. He has a kitchen manager and five staff. Jason designs the menus and he insists that his employees are creative. The café is open seven days a week from 7.00am until 10.30am for breakfast then from 10.30 till about 4.00pm for lunch. The café is alcohol-free, the coffee is L'Affare and it also serves herbal teas and smoothies. Besides the set menu, there is cabinet food available as well as Wee People options.



MORRIS WADDELL ELECTRICAL

'THE BOYS IN THE BLUE VANS'

Shine a little light on your decking, garden or driveway. Morris Waddell have your outdoor and security light systems sorted!

60 GLENITI ROAD
24/7 PH 03 686 2422 E mwaddell@xtra.co.nz
www.morriswaddellelectrical.co.nz

Improve your outdoor ambience with outdoor lighting

03 686 2422

WE ARE NOT INVINCIBLE WHEN WE ARE IN A CAR - HAYDEN PADDON

PROUD TO SUPPORT ROCK & HOP 2021

ROADS DON'T KILL. DRIVERS DO.

THE YELLOW DOOR CAFE

Timaru's newest exciting eatery
OPEN EVERY DAY from 7am
332 Stafford Street, Timaru



Body and Soul

Eye Care

The way we look at the world and use our eyes has changed over time. Previously, most of our time was looking at far and intermediate distances. Today we primarily focus on near objects such as computers, laptops, tablets, smartphones, gaming devices and books. Most of us don't realise the harmful effect this shift has on our eyes and vision. Take care of your vision by making eyecare part of your back to school or work preparations today. Our team can provide you with lenses which are specifically designed for different work environments, occupations, and digital devices! Better vision, better life!
Canon Street Optometrists. 26 Canon Street, Timaru. Ph (03) 688 9791

Physiotherapy

My Physio is a boutique physiotherapy practice opened in 2008 by sisters, Myra Adams and Pam Allan and joined by Physiotherapists Sarah Meikle and Ingrid Wilson.
 We welcome you into our cheerful and relaxing environment for a holistic approach to enhance the recovery from injury or illness, or promote healthy well-being. We have a range of services, including acupuncture and post-op rehab, working to treat acute injuries, manage chronic injuries and illness, and enhance well-being. We can do this through Pilates both individually, equipment-based or through our group mat classes, and with our programmes offered through Pinc and Steel Cancer Rehabilitation, Stay on Your Feet, Breathing Education and Training.
 We aim to work holistically and use the "Te Whare Tapa Wha" wellbeing model looking at the whole person, not just the injury. We have a fabulous team here who all practise what they preach and will go above and beyond for you.
Myphysio. 136 Wai-iti Road, Timaru. Ph (03) 686 9399. www.myphysio.nz

Meditation

The Healing Power of Meditation
 Taking into consideration that the human brain produces a multitude of thoughts every minute, it would be rather stressful to expect that when we sit down in meditation there should suddenly not be any!
 The power of meditation lies not in 'shutting down' the brain but simply in diverting our attention into the sublime stillness that is present within us.
 Thus meditation becomes a vessel for healing our body, mind and spirit, as it will assist us in letting go of the past and bringing our attention into the present.
 All sessions by \$5 donation towards the Nepali Orphan Fund
Artma Spiritual Gallery, Royal Arcade Timaru, 03 686 9878



20% off all bedding
 excluding new season



Mustard couch - Was \$2739
Now \$1900



Rattan Bedside
30% off



20% - 50% off all cushions

MAREE HYNES INTERIORS & GIFTS

Making way for new seasons stock

We have 20% off all homewares including- Cushions, Rugs, Lighting, Bedding, Giftware and much more.

Selected furniture and homewares up to 70% off with huge discounts on in store roll stock. Grab an amazing deal on upholstery and curtain fabric, hurry only while stocks last. *Conditions apply.



Beat the winter chill and get your curtains made before the cooler months arrive. Maree and Catherine travel far and wide offering a free measure and quote and Free making on selected curtain fabrics. Ask them about the amazing roll stock deals on offer.
Call today to book your appointment 03 686 6784



19 Theodosia St, Main Rd (opposite Ara Polytech) Timaru
 Servicing High Country, Mid and South Canterbury areas.
 Locally owned and operated

Phone: 03 686 6784
www.mareehynesinteriors.co.nz
 Follow us on Facebook & Instagram

Myra Adams Pam Allan Sarah Meikle Ingrid Wilson

NOW WITH A CLINIC AT CBAY
 11 Te Weka St - by appointment only
 call 03 686 9399 for an appointment

Sports Injuries
 Acupuncture
 Pilates
 Vocational Services
 Breathing (Bradcliff)
 Cancer Rehabilitation
 Pain Management

136 Wai-iti Road, Highfield, Timaru office@myphysio.nz
 036869399 www.myphysio.nz

Take care of your vision by making eyecare part of your back to school or work preparations today.

26 Canon Street, Timaru | 03 688 9791
 info@canonstreet.co.nz
 www.canonstreetoptometrists.co.nz

CANON STREET OPTOMETRISTS

Our fav brand

This month we asked our stores what their favourite instore brand is? We also decided to pick an extra piece that is our fav from each store!



EB AND IVE Solo Carigan
BLANK SPACE



Elegant Ring
JEWELCRAFT

Anne Et Valentin
CANON STREET OPTOMETRISTS



Stow Lockets
THE RING MAKERS



Back pack **THE ACCESSORY SHOP**



Stella and Gemma Stripe Sneaker
MINT BOUTIQUE



Deanne Hobbs Top \$285



Jellicoe Velvet Mustard Flower Jacket \$237



Deanne Hobbs Pant \$333



Deanne Hobbs Shop Window Jacket \$429



Jellicoe Mustard Up To No Hood Top \$197

FASHION FOCUS

Highfield Mall, Wai-iti Road, Timaru
Ph (03) 688 8711
www.fashionfocus.co.nz



Sunnies \$40 each



The Accessory Shop

268 Stafford St, Timaru
www.accessoryshop.co.nz
Ph (03) 684 5220



Range of Stella and Gemma Shoes instore and online



Stella and Gemma Love Sweater \$89.95



Stella and Gemma Sweater \$89.95



Stella and Gemma T-shirts \$49.95 each



Stella and Gemma Star Sweater \$89.95



Stella and Gemma Floral T-Shirt \$49.95

MINT BOUTIQUE 72 Main Street, Fairlie. Ph (03) 685 8084
www.mintboutique.co.nz



Handmade 18ct Gold, Platinum, Green Beryl & Diamond Ring, \$2,950



Handmade Platinum & Diamond Ring, \$6,995



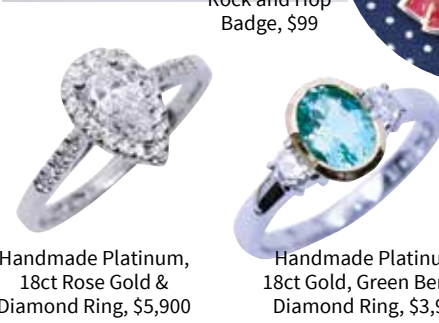
Handmade Platinum Emerald & Diamond Ring, \$11,900



Sterling Silver Earrings, \$69, & Bracelets, \$79



Shepherd's Whistles in 9ct Gold, \$1,990 and Sterling Silver, \$199



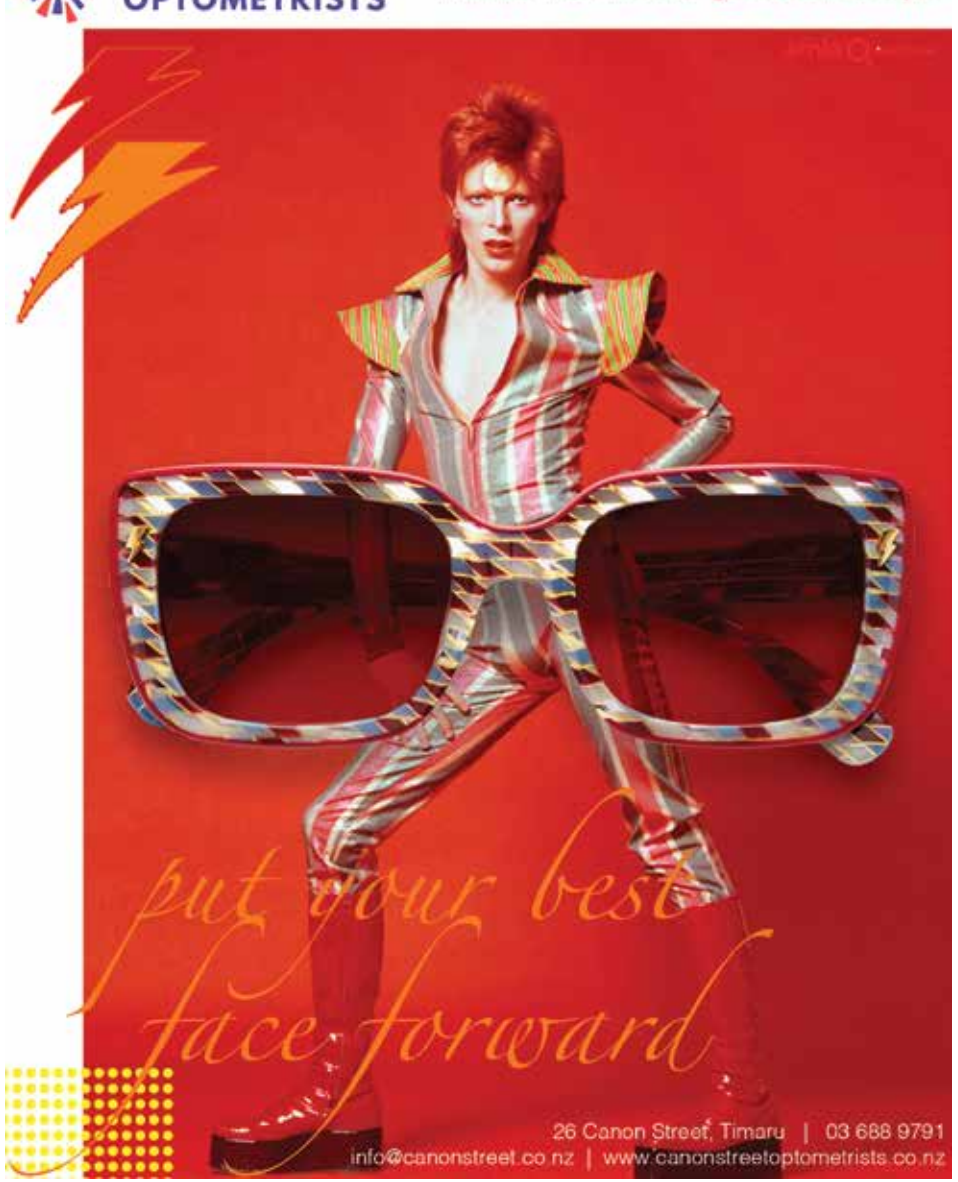
Handmade Platinum, 18ct Rose Gold & Diamond Ring, \$5,900

Handmade Platinum, 18ct Gold, Green Beryl & Diamond Ring, \$3,990



Sterling Silver Little Penguin Pendant, \$65

CANON STREET OPTOMETRISTS where vision never goes out of style



26 Canon Street, Timaru | 03 688 9791
info@canonstreet.co.nz | www.canonstreetoptometrists.co.nz



BEYOND CARDI \$104.95

BEYOND PONCHO \$109.95

SOLO CARDIGAN \$91



eb&ive

NEW COLLECTION
FAVOURITE BRAND

SOLO CAPE \$104.95



BASK BLOUSE \$129.95

BASK EASY TOP \$109.95



Amarillo \$499



Arles \$499



Chester \$499



Etosha \$499



Leipzig \$499



Reims \$499

CANON STREET OPTOMETRISTS

26 Canon Street, Timaru
Ph (03) 688 9791

JewelCraft

ELLANI COLLECTIONS

Two Tone Sterling Silver Cz Pendant \$134

Two Tone Sterling Silver Cz Ring \$189

Two Tone Earrings \$54

Two Tone Earrings \$66

Rose Gold Plated Trio Bangle \$89

Sterling Silver Cz Dress Ring \$134

Stainless Steel Hammered Tassel Necklace \$99

Yellow Gold Plated Pendant \$66

Stainless Steel Filigree Earrings \$43

Rose Gold Plated Earrings \$54

Rose Gold Plated Pendant \$54

Workshop & Showroom
297 Stafford Street, Timaru
ph 684 4882
www.jewelcraft.co.nz

A Rockin Good Cause

18 19 20 21 MARCH

CAROLINE BAY 2021
ROCK AND HOP TIMARU

LUCKY \$10,000 TICKET DRAW

CAROLINEBAYROCKANDHOP.CO.NZ

'THE BOYS IN THE BLUE VANS'

MORRIS WADDELL ELECTRICAL

03 686 2422

Proud to support the
Caroline Bay Rock & Hop

60 GLENITI ROAD
24/7 PH 03 686 2422 E mwaddell@xtra.co.nz
www.morriswaddellelectrical.co.nz

The newest
Hyundai Kona

Coming soon...

The compact SUV
with attitude.

HYUNDAI South Canterbury | 2 King Street, Timaru | 03 688 9995 | www.southcanterburyhyundai.co.nz

words: **Pattie Pegler**



Getting the Car Ready

It wouldn't be Rock and Hop without the cars and a lot of work and preparation goes into getting them ready for the big day.

Pauline Farrell remembers how her husband, John, used to wash and polish his beloved Mini prior to show day. He loved the car and it would be covered up in the garage and treated with the greatest of care.

After Pauline's husband passed away, it was Peter O'Neil, the general manager at the Hospice, who some time afterwards suggested she put her husband's car in the Rock and Hop this year. The car had been in the show before as John had been keen on showing it. "I was a bit overwhelmed by it when it was first suggested," says Pauline. "But I definitely wanted to do it".

Her son, Justin, remembers clearly when his father first bought the 1981 Austin Mini. "Dad phoned me up one day and said 'I've bought a car, it's a bit of a keeper'. I wasn't that into cars then," he says. But over the years his interest in them grew and alongside his dad he showed the Mini at Rock and Hop three years ago.

This year Justin is getting the Mini ready for the Rock and Hop. "There's a

bit of work to be done," he says. The car will have some rust spots removed and possibly have a repaint. It will be washed and polished and taken down to Timaru on a trailer and if all is going well Justin plans to take it on the Friday Night Cruise as well as showing it on the gala day.

The Mini always gets a lot of interest, he says. A metallic blue with bucket racing seats, white mags, a modified suspension and a 'throaty sounding engine' - the car has had plenty of work done on it to make it show ready.



You don't want to miss out...

Driving simulator

You have access to a brand new designed driving simulator developed by Dunedin based company GFactor.

The difference between this and traditional driving simulators is that it uses actual footage of NZ local roads so that drivers can relate to the driving environment.

Many simulators use computer generated scenery that may not be realistic and that gives it the "game" experience.

GFactor uses virtual reality headsets that brings the experience to life so that the driver can "look around" rather than just focussing on the road ahead.

The benefit of using simulation is so that drivers can experience various real life driving scenarios presented randomly by the program.

This method engages and conditions the subconscious mind into real life situations. Don't worry, there are no horrible scenes that should traumatise people.

Crash statistics and research show that poor decision making is a significant contributing factor in crashes. As the saying goes, "you don't know what you don't know".

This method enhances specific skills for drivers so that they develop better decision making abilities when experiencing similar situations in real life.

For novice drivers, this could be used as part of their syllabus where the theory and practical aspects are combined. It does not however eliminate the need for real life driving practice by way of driver instruction in a real car.

Come and experience the latest driver training technology brought to you by Kiwis.

Gold coin donations with all contributions going to South Canterbury Hospice.

This is not a toy, and due to the time to finish the session which is around 10-15 minutes, only people who hold at least a learner licence will be accommodated.



Slot Car set

What does an all-time favourite car racing game have in common with real life driving?

The answer is that in both cases crash causes are very similar.

Come, have a go and have a bit of fun. Whether you are a well-seasoned or a novice driver, the outcomes may surprise you! Due to high demand, small children must be assisted by an adult please.

Free giveaways and prizes to be won.

Gold coin donations with all contributions going to South Canterbury Hospice.



Free giveaways and prizes to be won.

Gold coin donations please - all money goes to South Canterbury Hospice.

Email: Daniel.Naude@timdc.govt.nz
Web: www.scrs.org.nz

Phone: 03 687 7235
Cell/Text: 027 438 6285





Caroline Mitsubishi
MITSUBISHI MOTORS

Proud to support Rock and Hop 2021

Caroline Mitsubishi, your locally owned team since 1991. Cars and Utes, parts and service for all makes and models and our car grooming service. We are the one stop car shop!

23 Barnard Street, Timaru
Ph 03 684 8501
www.carolinemitsubishi.co.nz

Getting the Stall Ready

We got the chance to put a few questions to veteran stall holders 19 Black - The Rockabilly Shop™. We wanted to know what the Rock and Hop means to them.

How many years have you been running a stall at Rock and Hop?

19 Black - The Rockabilly Shop™ has been involved with Rock and Hop for the past four years, except for last year when it was cancelled due to COVID. So this is our third year as a stallholder.

Why did you first decide to get involved?

Once we opened our store in Stafford Street, we committed to supporting the community in various ways, the Rock and Hop being our opening event in Timaru. Events, markets, and expos have been a consistent element of our business for the last 10 years, it's part of what we do!

What is involved in getting ready to run your stall at the event?

Planning and preparation for stock, staffing, gear, logistics, troubleshooting potential challenges such as weather, mobile payment systems and where to try on our fab dresses and shoes. Over the years we have streamlined our procedures so we can offer our services at both the Rock and Hop and in our physical store in Stafford Street simultaneously, with a great selection available at both locations.

How far ahead do you start to prepare?

Preparation for an event begins the moment the previous year's event finishes, starting with rebooking.

How does running a stall compare to selling from your normal store? What do you enjoy about it?

It is simply a different environment, the concepts are the same. But running a stall at an event is an opportunity to have fun and

words: Pattie Pegler



meet with our regular shoppers, event personnel, new customers, and our customers who usually can't visit our store due to living out of town. We enjoy the atmosphere that an event brings and it's a very enjoyable environment to share what we offer with the public, unless rain and wind is involved!

What have you learned over the years about running a stall at Rock and Hop?

We have been involved with different types of events for many years, and in general we have created a system that works well for us. But for Rock and Hop in particular, our experience has determined that we should expect at least one crazy weather day!

words: Pattie Pegler



Getting Best Dressed Ready

Sarah Maginness first became interested in the rockabilly retro style about five years ago when a friend took her to North Canterbury's Muscle Car Madness. She borrowed a 50s style dress and just loved the experience and the community around it she says.

So now Sarah is a regular every year at Timaru's Rock and Hop. Having grown up in Timaru and had family members pass through the hospice - it is a cause close to her heart. And she really loves dressing up in rockabilly/retro style so is a regular in the Best Dressed competition at Rock and Hop. She has entered many times and in 2018 took third place.

It takes a few months she says to decide on the costume she will wear and then pull all the aspects of it together. "I usually go for a colour scheme and get my ideas through the pin up community in NZ and places like Pinterest," says Sarah. "I will often start with one piece and then work out from there."

Sarah trawls through op shops and dedicated Facebook pages where people buy and sell vintage clothing - on the lookout for pieces to make her costume. Mostly she shops for pre-loved items and if the shops turn up nothing and she has a design in mind she may turn to one of her more 'crafty friends'.

"It's a real community and quite a few can sew and are crafty," says Sarah. Her own crafty skills she confesses are limited but she does often try to make her hairpieces.

As well as the support and camaraderie of pageant friends, she also gets great support from her husband, Jude, who she says is her 'style guru'. And her mum is also really supportive.

On the day of the Rock and Hop Sarah will be getting up early and heading down to Timaru with her husband in their Mark II



"I love the dressing up and getting an outfit together and I've made a lot of friends through it," she says. "It's all about being body positive and getting out there and having fun."



Ford Escort - all dressed up in retro style. "I am very particular about being prepared," says Sarah. So there is no last minute rush. She does however book in to have her hair and makeup done as the finishing touches in Timaru on the morning of the event.

Whilst Sarah admits to still getting nervous she is unequivocally positive about the pageant experience and credits it with having boosted her confidence.

"I love the dressing up and getting an outfit together and I've made a lot of friends through it," she says. "It's all about being body positive and getting out there and having fun."




TSG
TIMARU SIGNS GRAPHIX

YOUR Custom GRAPHIC SPECIALIST

- + CUSTOM DECALS
- + HAND PAINTED
- + PINSTRIPES
- + WRAPS

TIMARUSIGNS.CO.NZ
03 688 9226

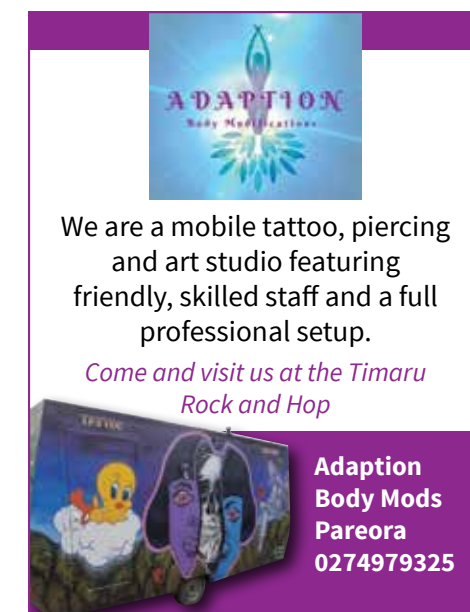


Helping New Zealanders to go further

Proud to support the Rock and Hop

- Hassle-free application
- Payments you can afford
- Local, personal service

03 686 6068
3 Hobbs Street
mtf.co.nz/timaru



ADAPTION
Body Modifications

We are a mobile tattoo, piercing and art studio featuring friendly, skilled staff and a full professional setup.

Come and visit us at the Timaru Rock and Hop

Adaption Body Mods
Pareora
0274979325



MARTIN WAKEFIELD LTD

Proud to support Rock and Hop 2021

Martin Wakefield Chartered Accountants Experts in Farm Accounting

- Rural & Business Accounting
- Auditing • Payroll • Taxation
- Body Corporate Services
- Succession Planning Services

CONTACT US TODAY

26 Canon Street, Timaru
Ph (03) 687 7122
www.martinwakefield.co.nz



Julie Neill's Dance Academy

Ballroom, Latin American, New Vogue, Private Lessons, Weddings, Special Occasion.

Proud to support Rock and Hop 2021

03 693 9990 | 027 206 8456



TOYOTA South Canterbury Toyota

Proud to be YOUR home of TOYOTA and proud to support the ROCK AND HOP

SOUTH CANTERBURY TOYOTA | McDermid AUTO COLLECTIVE

Cnr North & Stafford St, Timaru | Ph 687 9280 | Freephone 0800 1 TOYOTA
www.sc.toyota.co.nz



Peter Herron Flooring

We are proud to provide quality flooring preparation and installation guaranteed. Madam Mat Binding specialists have you sorted this winter providing Fire Mat edging to protect your carpets! Made to Measure.

Introducing Phil to the Peter Herron team

Phone: 021 370 750
17 Butler Street, Timaru | info.peterherronflooring@gmail.com

No matter how big or small, everyone is important!

MEDI CLINIC

Dr Anton van den Bergh
and Dr Barbara O'Connell

Your health care home

Come and meet our Friendly Team of Clinical staff at our new location:

5A Dee Street -
Opposite Medlab
behind the Dee St
Pharmacy.

Free parking available.

Proud to support
Rock & Hop 2021

Mon - Fri 8.30am - 5pm
Ph: 03 684 9988 or 03 688 6009



Jo Luxton MP for Rangitata

Hopping proud
to support the
Caroline Bay
Rock & Hop 2021

149 Stafford Street, Timaru
03 688 9588
jo.luxton@parliament.govt.nz



Working towards Zero Waste?

Timaru District Council
supplies advice, some
infrastructure, labels,
posters and general
education.

We welcome questions on
03 687 7489, or email
briony.woodnorth@timdc.govt.nz



ROCK AND HOP TIMETABLE

THURSDAY

1:00pm Riverstone cruise leaves from Caroline Bay. (if you have tickets to tour the castle you may need to leave earlier than this).

2:15pm Cruise meets at Riverstone.

3:15pm Cruise leaves Riverstone to cruise back to Timaru.

FRIDAY

9:00am Gates Open, Marine Parade entrance.

11:00am "Geraldine.nz" cruise leaves from the bay

2:00pm Geraldine cruise returns to Timaru

4:00pm Rock and Shop Street party starts, Timaru main st.

5:30pm Main Streets cruise starts.

6:00pm Temuka "Rock and Stop" street party starts

8:00pm Doors open for The SBS Bank Surfing USA Party

SATURDAY

7:30am Gates Open at Caroline Bay for vehicles to park up off Marine Parade.

9:00am Music starts

10:00 Band The Groove start playing, festival opens, voting opens, stalls and best dressed registration opens

12:00 Funky fashion parade

12:00am Band - The Drama Queens play

12noon All Best Dressed entrants must have checked in before 12.00.

12:25pm All best dressed entrants need to report to The Bay Hall for Pre Judging

12:30pm Pre judging for best dressed in the Bay hall, (Doors Closed).

1:00pm Band - The Drama Queens

1:30pm Best Dressed Entrants meet behind stage area.

1:30pm Voting for Participants and People's Choice closes

2:00pm Best Dressed Competition parade and prize giving

2:30pm The Drama Queens

3:00pm Car winners announced - trophies presented. Vehicles paraded in front of stage

3:30pm Mitre 10 Mega Strongest and Fastest final on stage.

3:40pm Highlands Motorsport Park Prize Pack Draw.

3:45pm \$10,000 Lucky prize draw live on stage

4:00pm Festival finishes.

7:00pm "Rock Your Socks Off" party doors open at the Caroline Bay Hall.

SUNDAY

8:00am Breakfast on the Bay in the Marquee begins.

10:00am Breakfast closes

10:30am Sunday cruise leaves heading to Tekapo, with lots of choices for what to see and do.



Highlands competition

WIN a "Keys to Highlands experience" at Highlands for 2 people valued at \$2,500.

Be at the main stage for the winner announcement at 3:40pm on Saturday 20th March (a vehicle will be picked from cars on display on Saturday).

Highlands is a world class facility with experiences to match.

Kiwi authenticity at its best, Highlands have created exceptional unique experiences suitable for everyone located in Central Otago.

12 great value activities onsite including their newest attraction "Loo with a View"

This exceptional experience includes:

- A Go Kart Race
- Highlands High Speed Taxi
- Supercar Fast Dash
- U-Drive V8 Mustang
- U-Drive Radical
- Museum entry
- Lunch
- Access to the GT Private Members lounge



*terms and conditions apply

You must have a full current drivers licence

WWW.HIGHLANDS.CO.NZ



BENNY'S AGAIN!

restaurant

Phone 03 686 9000
312 Otipua Road, Timaru
Bookings recommended

Proud to support the
**2021
Rock and Hop**

Fully licenced restaurant • Open 7 days, 11.30am till late

We all live in a great place here
in South Canterbury, so let's
celebrate by supporting the
Rock & Hop 2021.

0800 500 123
timaru@mikepero.com
339 Stafford Street, Timaru

MORTGAGES | Mike Pero | REAL ESTATE

Repair & Replacement

HOW BIG?

**BIG OR SMALL,
WE CAN FIX IT ALL**

Repair first and replace
when necessary

Watch this space, we are moving to
7 Bank Street, Timaru
21 King Street, Timaru T: 03 684 8940 M: 0272 555 488 www.novusglass.co.nz

Caroline Bay
Rock & Hop
2021

**PROUD TO BE A MAJOR SPONSOR OF
THE CAROLINE BAY ROCK & HOP 2021**

Come visit the 'Alpine Chill Out Zone'.
Great games and FREE giveaways!

Empowering our Community

phone: 0800 66 11 77

www.alpineenergy.co.nz

**EXPLORE
TIMARU**

SCENIC WALKS, HERITAGE & ART
WITH TIMARU TRAILS

DOWNLOAD
Timaru Trails APP

GOOGLE PLAY

APP STORE

Explore Timaru's fascinating history, art scene and walking tracks with Timaru Trails.

From scenic coastal tracks with ship wrecks and ancient lava, to discovering our inner city heritage, public art and uncovering the tales of the Timaru cemetery.

Download the free app from the App Store and Google Play and hit the trails.

welovetimaru.nz

The Lilliputs are Coming



The Lilliput Caravan Club of New Zealand is dedicated to the preservation and enjoyment of the iconic Lilliput Caravans which were manufactured in Auckland from the early sixties through to the late seventies. This is the only 'one make' caravan club in the country. Production of these iconic caravans ceased in 1979 owing to the prohibitive sales tax introduced by the government at that time and the original

Lilliput company went into liquidation, but not before some 300 Lilliputs had been made. Nine years later, in 1988, some 50 owners of these beautiful iconic relics gathered in Taupo to form the Lilliput club, which still thrives today. Ownership of a Lilliput is a prerequisite to full membership of the club. Many Lilliput Caravan club members are retired people, with a good mix of young families and a range of people in between.

A National Rally is held annually, usually in the North Island where the bulk of the vans are situated, but last year, and in liaison with Hospice South Canterbury, the Club arranged to mount its own 'Rock and Hop South Island Rally' with members coming to be the star attraction in the caravan section of the Caroline Bay gathering. Impromptu parades were held in the main streets of Westport, Hokitika, and Wanaka as the rally progressed, at which funds were raised for the Hospice, and a worthwhile donation was able to be made in March last despite



the Timaru-based event being cancelled at the last minute due to Covid-19 influences.

One worthwhile outcome arising from 2020 was a new South Island division of the Lilliput Club being established, as there are a few of the vans in existence in our part of the world, and this has resulted in a determination to again feature in Caroline Bay this year, as in the Club's eyes they have 'unfinished business'. Accordingly the 34th annual National rally will be a '2021 Lilliput Rock and Hop Rally' commences in Havelock in early March, and this time has been convened by South Island based club members. This will travel from Havelock to Invercargill during the month, but with the main focus being at Caroline Bay. Some 20 vans are registered, coming from places as far away as Maungaturoto, Auckland,

Tauranga, Matamata, Rotorua, Taupo, Hastings, Otaki as well as from the South Island. They will be featuring in the Timaru Friday night parade, as well as being onsite on the Saturday, where owners will be delighted to host visitors to their Lilliput Village during the public display.

Recently the Club published a hard-covered full colour 450 page book "One Man's Dream - the unique world of Lilliput Caravans" as a comprehensive historic record of New Zealand caravanning in general and the fifty plus years of Lilliput's existence in particular. This fascinating story normally retails at \$59.95, but it will be available both on the journey south and at the Rock and Hop Festival for the special price of \$40.00, 25% of which will be donated to the Hospice.



Lucky Ticket Draw

Your Hospice is once again very excited to be running its \$10,000 Lucky Ticket Draw. 2020 winner was Grant Mehrstens from Timaru and this year it could be you.

The giveaway was started thanks to local lady Lana Cox who donated a motorbike that she had won. Hospice sold this and used the \$10,000 to hold the lucky draw. Enough money was raised to ensure the competition could continue this year.

Get yours for \$10 from our Hospice Shops or office and be in to win. A limited number of tickets are for sale so you may like to get yours early to be sure you're in the draw.

If you would like to ensure you have a lucky ticket pop into one of the Hospice Shops or call 03 687 7670. Alternatively, you may see some around town, don't miss out, YOU DO NOT NEED TO BE AT THE ROCK AND HOP DRAW TO WIN, but we would love to see you come up and collect your prize. The live draw will happen at 3.45pm at the Gala Day on the 20th of March 2021. See you there.

Prizes

- 1st prize - \$10,000 cash voucher
 - 2nd prize - \$1,430 Lake Stone Lodge, Lake Pukake, one dinner for two, two breakfasts for two, two nights' accommodation voucher.
 - 3rd prize - \$500 Pak n Save voucher.
 - 4rd prize - \$500 Pak n Save voucher
 - 5th prize - \$300 petrol voucher
- All winners will be given a voucher on the day of draw to redeem their prize.



YES, WE'RE GIVING AWAY \$10,000 CASH

Rock and Hop Brooch



We are super excited to have produced this enamelled solid sterling silver badge, designed and made right here in Timaru, to support the Rock and Hop event.

A portion of the proceeds of each sale will go directly to Hospice South Canterbury.

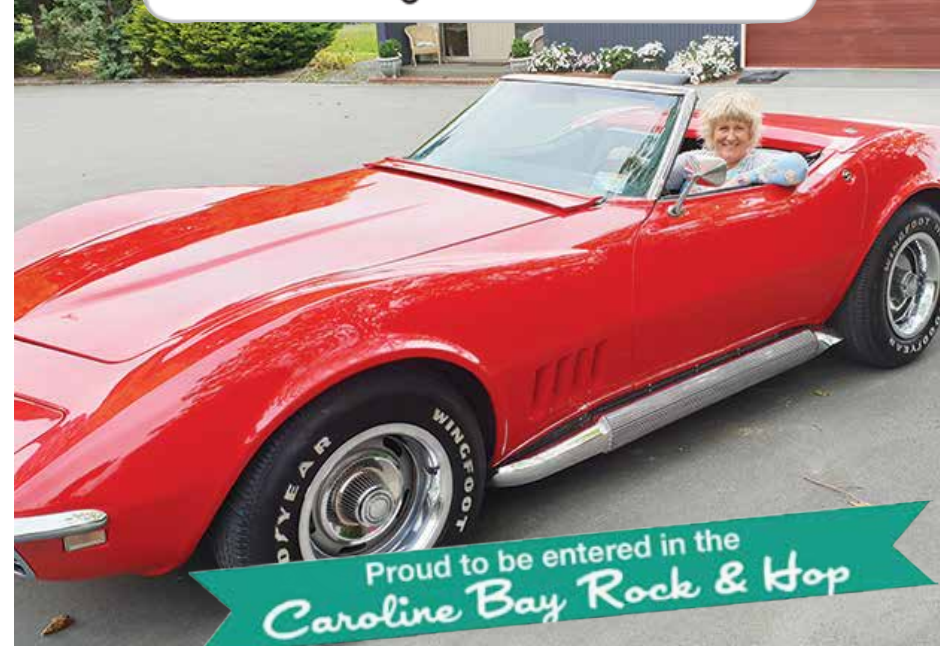
Phone 03 688 1362 to order yours today

The Ringmakers
Manufacturers of Fine Jewellery

Call us today 03 688 1362
270 Stafford Street, Timaru
www.theringmakers.co.nz

Design Engineering Supporting Rock and Hop

de Calibration, Certification, Compliance & Consulting Engineers



Proud to be entered in the Caroline Bay Rock & Hop

Ph: 03 688 6713 | 4 Elizabeth Place, Timaru
www.designengineering.co.nz

SILVESTER P18 PERFORMANCE

Proud to support Caroline Bay Rock & Hop See you there!



144 Moorhouse Ave, Christchurch, 0800 327 350
www.silvesterv8.co.nz

TOP 10
Holiday Parks
Classic

Timaru
TOP 10 Holiday Park
timaruholidaypark.co.nz

Proud to support Caroline Bay Rock & Hop
HOSPICE SOUTH CANTERBURY



puzzled how to get better internet?

We've figured it out for you

VETTA.ONLINE

0508 4 INTERNET
03 222 6200
www.vetta.online



Your local Volkswagen, Kia, and Nissan Dealership.

AUTOWORLD
VW KIA NISSAN

Visit us at 6 Saffron Street, Timaru 7910 | P. 03 683 1215
E. info@autoworldtimaru.co.nz | www.autoworldtimaru.co.nz

Lighter, faster, safer and even more economical, the all new Swift takes 'cool' small car design to the next level.

Proud to support Rock and Hop




HOLLAND'S SUZUKI CARS
13-15 North Street, Timaru
03 688 8297 www.hollandstimaru.co.nz

JewelCraft

Jewellery Repairs and Manufacturers of Fine Jewellery

Proud to support the Rock and Hop



297 Stafford Street, Timaru
ph 684 4882 www.jewelcraft.co.nz

FROM THE Mayors Desk

Nga mihi o te houanga – New Year's greetings

While I've said a Happy New Year to the many people I've seen over the holidays, I'd like to take this opportunity to extend that to everyone in the district. I hope you have all had a lovely holiday break with family and friends.

2021 is set to be a huge year here at Council. As well as our business as usual work in keeping all the infrastructure and services running smoothly, we are working on our Long Term Plan. Our Long Term Plan details the next ten years of spending, which tracks what new projects and what levels of service we will provide over the next decade. This is one of the best opportunities to directly have your say and we will be inviting consultation in April and May. Keep an eye out for the drop in sessions we will be having around the district so you can come along and speak to myself or one of my fellow Councillors. I know this is a district that's bursting with creativity, ideas and opinions and it would be great to see all this captured and reflected in this significant document.

Our district has some really exciting events coming up in 2021 which brings some much needed positivity and

reassurance. We were lucky enough to host the Crusaders vs. Highlanders game in early February. It was fantastic to see so many local people enjoying themselves in Temuka. Looking forward there's South Canterbury Children's day at Caroline Bay, Hadlow to Harbour fun run and walk, The Bandquet - grab your tickets for this one, it's going to be an awesome event with so many great live acts and of course the famous Caroline Bay Rock and Hop which will be back in full force this year.



Check out www.vttourism.co.nz for more details and to see what else is happening around the place. Make the most of the summer months and get out and enjoy what the Timaru District has to offer!

Finally, I would like to remind you all to take care of each other as our intricate world recovers. 2021 will continue to be tough but with the Covid-19 vaccine being rolled out there is hope and cautious optimism for 2021.

All the very best for a happy and healthy year.

Mayor Nigel Bowen

words: Gilly Oppenheim



Enjoy the Rock and Hop Cruises

New departure time 5.30pm

Whilst you are in the region you have the opportunity to discover some of the secrets and delights of our local towns. On Friday the Geraldine Cruise leaves Caroline Bay at 11.00am. In Geraldine you can enjoy live music on the Village Green and browse the fantastic boutique shops specializing in giftware, crafts, fashion and homeware. The town is renowned for its art scene and boasts a number of galleries and you can even visit local artists in their studio. The Geraldine Auto Renovations will open their doors so you can get a sneak peak of recent renovations and their hall of fame. Another 'must visit' for car enthusiasts is the acclaimed Vintage Car and Machinery Museum. New to the Geraldine Cruise is Paul Robins Route 79 Museum, with its eclectic collection of cars, tractors, artillery pieces and wall displays. This attraction costs \$5 to visit with 20% being donated to the hospice.

On Friday night Temuka's main street will be closed to normal traffic from 5.30 - 9.00pm, so that the Rock and Hop cars can cruise through. There will be sausage sizzles and food vans and live music will be playing.

The Sunday Cruise will leave Caroline Bay at 10.30 to cruise up to Tekapo. En route you will pass through Pleasant Point where you won't want to miss "Frocks and Shocks" at Obsolete Iron Motors. Classic, vintage and retro clothing, jewellery and accessories for the girls and vehicle servicing, WOF checks, engineering, car/bike builds and solving issues for the boys! Next stop Fairlie with its famous pies from the Fairlie Bakery or coffee and delicious

food from the various eateries in the village. The Fairlie Heritage Museum features vintage saddlery, tradesman tools, household and sporting equipment. Vehicle pavilions feature vintage motor and horse-drawn vehicles and a stunning array of vintage farm equipment. Even a gyrocopter that actually flies!

Then on to Kimbell, where you can indulge in a pint at the Silverstream Hotel or visit the art studio and gallery. On to Burkes Pass, the home of the Three Creeks Arts and Crafts Store which is an interesting combination of museum and shop, selling local arts and crafts. It has an amazing collection of vintage vehicles and farm equipment, plus handmade chairs and tables, a blacksmith shop and old and new collectibles.

Finally our destination and the jewel in the crown - Lake Tekapo with its stunning blue lake, surrounded by acres of golden tussocks and snow-covered mountains in winter. There are a myriad of activities to enjoy here. Start with a burger and beer at Our Dog Friday or try something yummy from The Greedy Cow which has an in-house pastry chef and serves award-winning Hawthorne coffee. There are lots of eateries to choose from. If you have time, a drive up to the Observatory gives you a stunning view over Lakes Tekapo and Alexandrina and the walk down will take you past Tekapo Springs with both hot and cold pools. If you're feeling a little less energetic, take a walk over the bridge to the iconic Church of the Good Shepherd. Then maybe another coffee or a beer and it's time to head home!



CBAY CAFE
coffee · food · friends

The team at CBay Café love coffee! They are passionate about serving their customers delicious Vivace coffee, every visit.

Whether you're after a smooth flat white, aromatic long black or a coconut milk latte, your day just gets a little bit better with every sip.

CBay Café, the best place for a delicious coffee and fresh food at a great price. Gluten free, vegan and Keto options available.




RELAX AT CBAY

Located just up the road from the RockHop, CBay is the perfect place for a fun family outing or to supplement your daily fitness regime. Clock up some km's in the pool, attend a fitness class or just relax with a delicious coffee at CBay Café.

A modern fitness and leisure centre, with three indoor heated pools, a 50m outdoor pool (open mid-Nov to 5th April) two hydrosides, a children's water play area, Rapid River, Big Splash Tower and Chillax area (16yrs +) there's something for everyone.

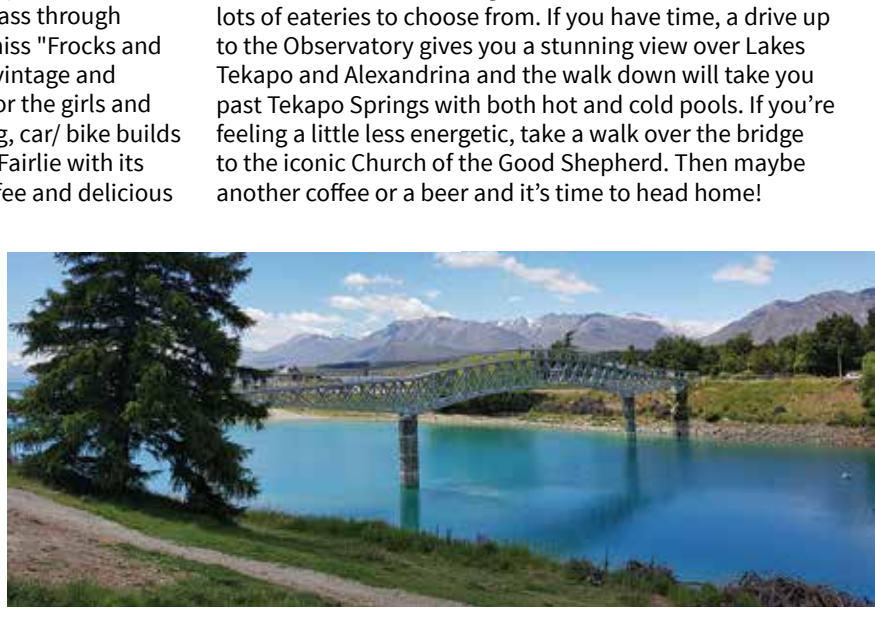
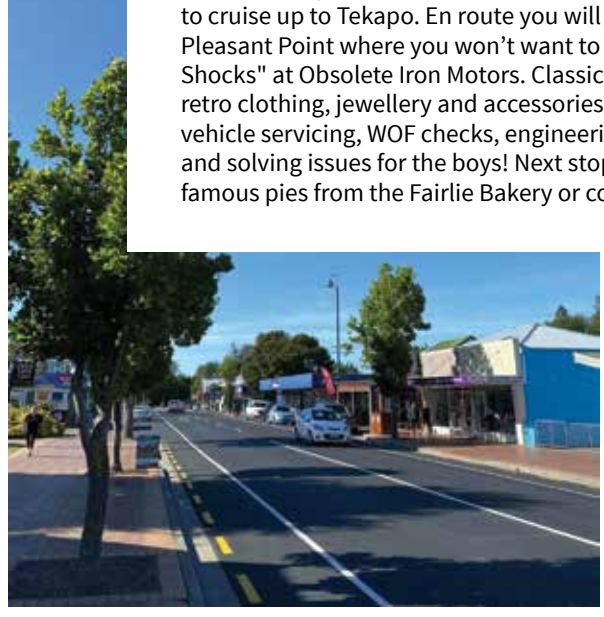
So whatever the weather, it's the best place to splash, swim and play, because it's always summer at CBay.

ADMISSION:

Child (5-17 years and high school pupil with ID)	\$4.00
Adult	\$6.00
Senior (65+)	\$5.00
Spectators accompanying a swimmer	No Charge
HYDROSLIDES: 5 years & over (additional to admission price)	
Unlimited rides per session	\$4.00
CHILLAX: 16 years & over (additional to admission price)	
Sauna/Steam/Spa	\$3.00
GYM CASUAL VISIT	\$15.00
SHOWER	\$3.00

POOL SAFE CHILD SUPERVISION POLICY
CBay Aquatics endorses the NZ Standards for the aquatics industry and the Aquatic Code of Conduct. Active supervision is required for ALL children in the facility under the age of 8 years, NO exceptions. Parents or caregivers who do not supervise their children appropriately will be reminded of this policy, which is designed to keep children safe in the water at all times.
UNDER 5 YEARS: A maximum of two children under 5 years to one responsible person* who MUST BE WITHIN ARMS REACH and in the water at all times, no exceptions.
5 TO 7 YEARS: A maximum of 4 children aged 5 to 7 years to one responsible person* who MUST BE ACTIVELY SUPERVISING and able to provide IMMEDIATE ASSISTANCE when required, no exceptions.

Open Hours
Monday - Friday 5.30am - 9pm
Saturday, Sunday & Public Holidays 7am - 7pm
11 Te Weka Street, Timaru
Ph: 03 684 2229
@CBayAquaticCentre



MINT BOUTIQUE

Proud to support the Rock and Hop 2021. Come visit us, or find us online.



72 Main St, Fairlie | Ph (03) 685 8084
www.mintboutique.co.nz

The Greedy Cow
16 Rapuwai Lane, Lake Tekapo

ph: 027 434 4445
email: jane@thegreedycow.nz

www.greedycowtekapo.com
Find us on FB & Instagram

Obsolete Iron Motors

AVAILABLE NOW!

Brake Service | WOF | Oil Change | Part Procurement
Battery Health Check | Cam & Timing Belt Replacement
Motorcycle Servicing | Custom & Classic Vehicle Repair

87 Main Rd, Pleasant Point | Ph (03) 614 7410
www.obsoleteiron.com

the KITCHEN Cupboard

We stock quality brands at great prices. Catering for your everyday kitchen needs as well as those specialty items. If we don't have it chances are we can get it - just ask.



34B Talbot St, Geraldine | Ph 03 693 8632
www.thekitchencupboard.co.nz

SILVERSTREAM HOTEL
KIMBELL

Going for a Cruise

Visit The Kimbell Historic Country Pub & Beer Garden

SH8 1.8min past Fairlie on the way to Tekapo
03 685 8370

CATERING SOUTH CANTERBURY

Have a chat to the team Catering South Canterbury today, the experts in event catering and delicious food.



Phar Lap Raceway, State Highway 8, Washdyke, Timaru. Ph: 03 688 2626
E: CateringSouthCanterbury@hotmail.com

Stop & enjoy our foodies



The Shearers Quarters

Rock, Hop and Cruise out to the rustic café The Shearers Quarter's just a 15 minute cruise north of Timaru. Check out their fabulous menu and activities to entertain all ages.

This country cafe has evolved into one of South Canterbury's leading family destinations.

Open from 8.30am every day with ample parking
924 Seadown Road, Temuka. Ph (03) 615 9043

The Bottle O Seaview

Bottle O Seaview has a wide range of liquor available. Come in store and see more special deals. This month's special deals now available.

Smirnoff Vodka 1L, Gordons Gin 1L, Teacher's Scotch Whisky 1L, Malibu 1L.

\$34.99 each come and visit us for more specials in store (Please drink responsibly).

Shop 4, The Landings, 50 Theodosia Street, Timaru
Ph 03 971 5546



TT&CC

TIMARU TOWN & COUNTRY CLUB

Phone 03 688 0020

Restaurant & Cafe
open 7 days

99 Douglas Street, Timaru
www.timaruclubs.co.nz

Subscribe to our newsletter

Warehouse Liquor

Gordon's Sicilian Lemon Gin packs a generous helping of vibrant lemon alongside the juniper-forward heart of the classic gin. Bursting with fruity freshness imparted by the Mediterranean citrus, this tittle will certainly make for some tasty summer cocktails - we reckon it'll add a zesty twist to a Aviation... There's still plenty of juniper up front, but fresh lemon peel certainly stands out, with a hint of thyme for support.

35 Browne St, Timaru. Ph (03) 688 1012
www.warehouseliquor.co.nz



Saikou

Saikou TWB delivers premium Asian fusion cuisine in a busy vibrant bar environment, located in Timaru's CBD, at approach to 'Bay Hill' adjacent to loop road, overlooking beautiful Caroline Bay. We offer exceptional Asian fusion cuisine with an emphasis on whiskeys and craft beers. Our chefs offer a sensational menu, designed to be shared (tapas style).

4a Sefton St East, Timaru
Ph (03) 688 6830 | www.saikoutwb.co.nz



Wetlands Cafe

Situated at the south end of Timaru, Wetlands cafe offers authentic Vietnamese food to our locals. Recently renovated and with a new menu, they continue to offer delicious dishes such as chicken satay and crispy pork belly on rice which are some of their favourites. In addition choosing one of their catering platters, there are excellent finger foods so that one can have a full experience of the cuisine Wetlands cafe offers.

Open Mondays to Saturdays. Late night for takeaways on Friday and Saturday.

169 King Street Timaru
Phone 03 688 9424
www.wetlandscfe.com

WAREHOUSE LIQUOR

Valid until 08 March 2021

Seagers Gin 1L \$31.99

Export Gold 24 pack bottles \$32.99
Speights Summer Ultra Low Carb Lager 24 Pack \$33.99

Ivanov Vodka 1L \$31.99

Jim Beam & Cola 10 pack 4.8% \$19.99
Smirnoff Red Ice 12 Pack 5% 250ml cans \$20.99

35 Browne St, Timaru | P 03 688 1012 | www.warehouseliquor.co.nz

Massive savings now on instore at HR Power UP TO 30% OFF



Zomax Arborist top Handle Chainsaw
Was \$290
NOW \$190
Save 100



Zomax ZM7500 Chainsaw with 22" Bar
Was \$599
NOW \$449
Save 150



Quality Oleo-Mac 63.4 Chainsaw with 20" Bar
Was \$1,299
NOW \$999
Save \$300



Oleo-Mac Chainsaw GS-44 with 18" Bar
Was \$749
NOW \$599
Save \$150



Oleo-Mac Chain Saw GS-956
Was \$899
NOW \$699
Save \$200



Alpina 18" Steel B & S 450E
Was \$499
NOW \$349
Save \$150



Oleo-Mac Sparta 25 Brush Cutter
Was \$399
NOW \$299
Save \$100



Lay Flat Hose 2" & 3" (50m roll)
Was \$140
NOW \$100
Save \$40



Oleo-Mac Leaf Blower 30.5CC
Was \$450
NOW \$360
Save \$90



Self-Propelled Lawn Mower
Was 699
NOW \$480
Save \$219



Oleo-Mac Sparta 38
Was \$699
NOW \$499
Save \$200



2" Water Pump New Shipment
Was \$375
NOW \$285
Save \$90



Oleo-mac Backpack leaf Blower
Was \$1,199
NOW \$899
Save \$300

ARRIVING SOON!

High quality portable band sawmill. Trailer mounted and free-standing options available.

Backorder yours today.



Concrete Power Trowel (HP-S80L)
Was \$990
NOW \$695
Save \$295



Tecomec Jolly Evo Professional Chain Grinder
Was \$ 499
NOW \$385
Save \$114

See instore for more details

6 Barnard St, Timaru 03 684 4593
www.hrpower.co.nz

HOLLANDS RURAL



Proud sponsors of the Caroline Bay Rock and Hop!

You and your family deserve to be warm, dry & cosy this winter.

Don't wait until it gets cold, get a new fire installed now.

FIRE & FLUE PACKAGE
\$3399



EXCLUSIVE

Serene ULEB Wood Fire

8.6kW maximum average heat output. Convenient ash scoop for easy cleaning. Fire safe drawers for storage of kindling, fire lighters & matches. Solid 8mm steel cooktop.

342633



FIRE & FLUE PACKAGE
\$3899



EXCLUSIVE

Rakaia Freestanding ULEB Wood Fire

8.7kW maximum average heat output. Suitable for medium to large homes. 64 litre fire box capacity. 20 year Fire Box Warranty. Extended burn time. Easy clean ash plan.

FIRE: 350542
FLUE KIT: 232915



FIRE & FLUE PACKAGE
\$4099

metröfires

EXCLUSIVE

Ultra Insert Metallic Black



Ultra low emission clean air approved model. 15kW peak heat output. Heats 150m2/ 2-3 bedroom home, New Zealand made. W: 810mm, H: 654mm, D: 650mm.

343176

FIRE & FLUE PACKAGE
\$2399



EXCLUSIVE

Brunner MK II Wood Fire

14.5kW maximum average heat output. Metallic black. Durable 6mm steel fire box. Super tough 5mm robax ceramic glass. Functional cook top.

FIRE: 229210
FLUE KIT: 232676



FIRE & FLUE PACKAGE
\$2499



EXCLUSIVE

Wanaka Freestanding Wood Fire

10.4kW maximum heat output. Heats medium to large room areas. NES, ECAN and ORC air shed 1 clean air approved. Flat radiant top allows cooking.

FIRE: 280591
FLUE KIT: 269962



Big Range, Low Price, Local Advice

Offers expire 1st May 2021

ASHBURTON MITRE 10 MEGA
West Street, Ashburton
PHONE 03 308 5119

TIMARU MITRE 10 MEGA
23 Bank Street, Timaru
PHONE 03 687 2033

OAMARU MITRE 10 MEGA
Dee Street, Oamaru
PHONE 03 434 9860

