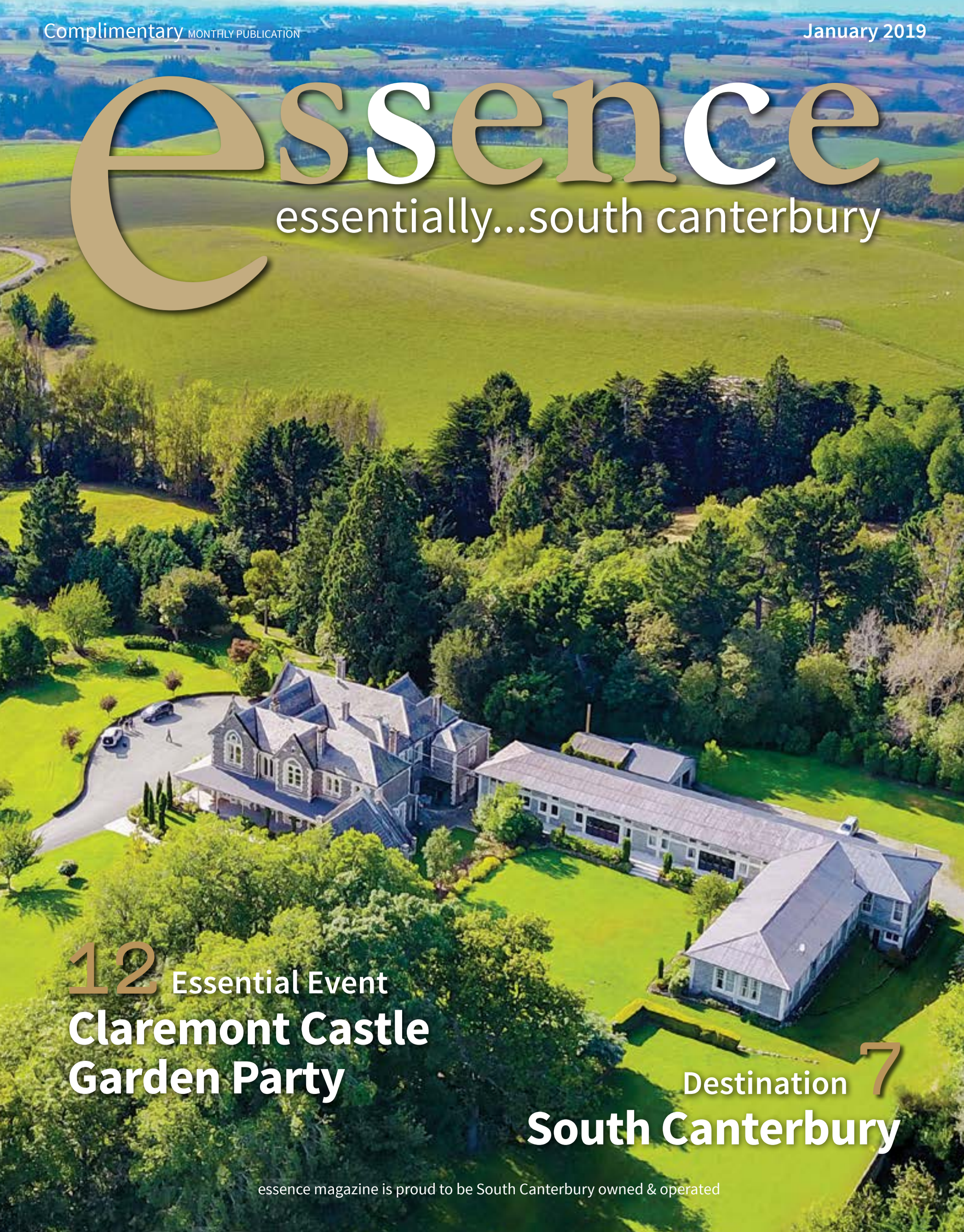


# essence

essentially...south canterbury



**12** Essential Event  
**Claremont Castle  
Garden Party**

Destination **7**  
**South Canterbury**



# THE Creative Chamber

## Time to refresh your look

Do you feel as though your brick home needs a refresh? You're not alone. One of the biggest trends coming into 2019 is painting your brick exterior.

Reviving your tired brick home with paint can be a relatively inexpensive way to make a huge impact on your street appeal and the general look of your home. You can transform a red, orange or yellow brick home with a dark grey to add drama or a clean white to add a classic feel. For those who are thinking of purchasing a home and love everything except the bricks, don't let that stop you. We have the answer.

Paint is an easy solution and will make your home feel like a brand new one. Another big overseas trend for the more endearing is white washing your red brick home. It adds a completely different look and definitely makes a bold statement.

White washing can be used on old or modern builds and is usually paired with a contrasting full bodied black to give it the clean cut look.



Come in and see your local Dulux colour specialist at Guthrie Bowron Timaru for more inspiration.



Karen Chambers Design - Guthrie Bowron Timaru  
14 Barnard Street, Timaru • Ph 688 1068

# GET THE LOOK

Summer is here and there's plenty of fresh ideas for interiors, accessories and fashion.

Exciting colours, shapes and textures, that will refresh your home and brighten your wardrobe - visit our South Canterbury stockists and business for clever ideas and great shopping.

Are you looking to style your new home, or need a few exquisite pieces, or want to update your existing furniture? Well, make **Living with Style** a must visit! Accessorise with a rug, vase or original piece of art to complete the look.



▲ Harvard 3 seater Chesterfield \$6,950



▲ Vincent NZ Made Occasional Chair (Select your own fabric)



Ozias Mirror \$455 ▶

Aluminium Wall Decor \$229 ▶

▲ Old Elm sideboard special pricing available on request



Elephant with Metal circle ◀\$230

**LIVING**  
with style

Your locally owned and operated furniture showroom when comfort counts

300 Hilton Highway, Timaru | Phone: 03 688 2960  
OPEN: Monday - Friday 9.00am - 5.00pm | Saturday 10.00am - 4.00pm  
[www.livingwithstyle.co.nz](http://www.livingwithstyle.co.nz)

Ron Brown Jewellers offer an extensive range of high quality, stunning jewellery, including watches, diamonds and rings or Stephen Brown can design and manufacture that special piece of jewellery, whether it's a ring, earrings or a pendant.



Dansk Smykkkunst Fashion Jewellery Necklace \$129

▲ Dansk Smykkkunst Fashion Jewellery Earrings \$79

Dansk Smykkkunst Fashion Jewellery Bracelet \$85 ▲



Drop Earrings ◀\$190

Love Lockets Locketts \$49-75 Chains \$19-45 Charms \$15-35



Sterling Silver Necklace with Gemstones ◀\$340

Barometer \$295



Paul Hewitt Watch & Bracelet Set \$349

▲ Paul Hewitt Bracelet \$129 (starting from \$95 - \$129)



304 Stafford Street, Timaru. Phone 03 688 9835  
[www.ronbrownjewellers.co.nz](http://www.ronbrownjewellers.co.nz)

## contents

Summer has finally arrived, we knew it was hiding there somewhere! From the other side of the world I was eagerly awaiting its arrival.

My husband and I went to America over the Christmas holidays visiting four cities where the daily high was minus 2. It was a fabulous trip and it was great doing the touristy things, although we had to rug up. Nothing like a day of walking and adventuring around to help keep you warm. When things got too cold there was always a warm diner somewhere for a hot drink or burger! We had heard about the size of the meals there and can say we defiantly indulged in some super-sized choices from the menu! We did have one warmish day where I was able to wear a t-shirt venturing around LA and Beverley Hills - although perhaps I should have worn something more formal as we found out the Golden Globes were on that night. It would have been great to stand side-lines of the red carpet and watch the stars go in!

It has been great to come home and feel productive in putting together our first issue for the year. In this issue we showcase some great local destinations for shopping in Waimate, Fairlie and Timaru.

Make sure you mark the 9th of February on your calendar for the Claremont Castle Garden Party, we are all looking forward to the day!

Have a great month - Larnya

### contact us:

**Dorothy McLennan - Publisher**  
dorothy@essencemagazine.co.nz  
Ph: 0274 507 532

**Pat Naude - Advertising & Business Manager**  
pat@essencemagazine.co.nz  
Ph: 022 684 5974

**Liz Bell - Advertising Co-ordinator**  
liz@essencemagazine.co.nz  
Ph: 022 176 4349

**Larnya Bourdot - Graphic Designer**  
larnya@essencemagazine.co.nz  
Ph: 027 525 8649

22 Chapel Street, Timaru, South Canterbury  
Ph: 03 684 8439 | [www.essencemagazine.co.nz](http://www.essencemagazine.co.nz)

Published by **IMPACT PUBLICITY 2005 LTD**  
Opinions expressed in essence magazine are not necessarily those of Impact Publicity 2005 Ltd. No responsibility is accepted for unsolicited material. No material may be reproduced without prior written permission of the publisher.



Ben and I looking over the incredible Grand Canyon



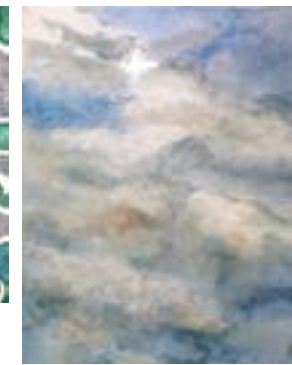
7 Destination SC



6 Essential Ingredients



10 Art and Living



13 Essential Fashion



## Need an extra copy of essence magazine?

We have stands located at

- Sopheze on Stafford Street
- Countdown on Church Street
- Northtown Nutrition at Northtown Mall
- Outside Cobblers Inn at Highfield Mall

## MORRIS WADDELL

### ELECTRICAL

# 03 686 2422

'THE BOYS IN THE BLUE VANS'

Shine a little light on your decking, garden or driveway. Morris Waddell have your outdoor and security light systems sorted!

Improve your outdoor ambience with outdoor lighting

**60 GLENITI ROAD**

A/H MOB 027 495 8255  
E [mwaddell@xtra.co.nz](mailto:mwaddell@xtra.co.nz)

Anne & Valentin

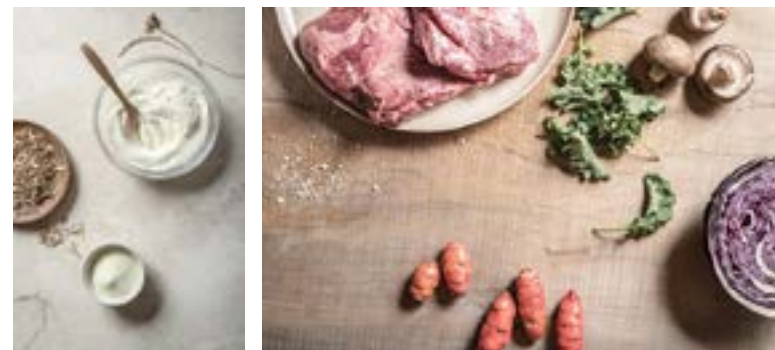
where vision never goes out of style

26 Canon Street, Timaru | 03 688 9791  
[info@canonstreet.co.nz](mailto:info@canonstreet.co.nz)  
[www.canonstreetoptometrists.co.nz](http://www.canonstreetoptometrists.co.nz)





## Hanleys Essential Dog Roll



Essentials dog rolls have now rebranded to Hanleys Essential Dog Roll under owner Philippa Hanleys animal nutrition banner.

Philippa has been making natural horse and dog food for over 10 years and lives locally in Geraldine.

Hanleys Essential Dog Rolls are not just amazing meat. Philippa's own protein concentrate are added along with organic minerals, rice and hemp seed oil from Canterbury. Hemp seed oil has been dubbed 'nature's most perfectly balanced oil', due to its 3:1 ratio of Omega 6 to Omega 3, deemed an essential requirement for long-term healthy nutrition. Brown rice flour and other organic minerals are also added, making the rolls full of clean protein

and good fats. Hanleys contains 18% protein so next time you are buying your dog roll compare this figure. More protein means you need to feed less, so you are receiving far better value for money. Feed less and save more.

It is not just about what is in the rolls. What is missing is also crucial. No preservatives or chemicals are added. Many pet owners probably do not realise how hard preservatives are on a dog's kidneys and how much damage they may cause. The business mottos are: 'enhance all health' and 'health before money'.

Feed only a portion of normal supermarket rolls due to the superfood ingredients.

Free samples available at For Pets Sake



Available from North Street pet shop - For Pets Sake or if you live outside Timaru visit [www.animalesentials.co.nz](http://www.animalesentials.co.nz)

Or phone Philippa on 021 943 282

## Christmas Shopping at Blank Space

Blank Space held their late night shopping evening on Friday, 14th of December. This was a fantastic night out for Christmas shopping, interacting with friends and checking out the new styles.



## Timaru Gap Christmas Promotion

On the 22nd of December For Pets Sake organised the Timaru Gap Christmas Promotion. This gave locals the opportunity to learn about and interact with retired greyhounds, as well as how to go about adopting one.



## Melbourne Trip winner!

A rainy night in December did not put a dampener on the evening when the winner was announced for the Trip for Two to Melbourne. Congratulations Kirsten and Kerri-Anne, have a fabulous time!



## NZ House & Garden Tour



Almost 40 tonnes of local stone link the new Dennison home to North Otago. The 500m<sup>2</sup> home will feature as one of the attractions of the sold out NZ House & Garden fundraising tour in mid-Feb, which also features the Riverstone Castle.

## From the Mayor's Desk



I hope you have had a restful and happy holiday season and are all set for an exciting 2019 and we certainly are at Mackenzie District Council

Mackenzie has been experiencing tremendous summer weather with hot clear blue skies intermingled with the occasional wet cooler day. I encourage you to visit the Mackenzie lakes and rivers, go for a walk at Aoraki Mount Cook or wander around the serene Lake Alexandrina, experience biking a section of the Alps 2 Ocean trail or the Tekapo Regional Park, take Air Safaris flight around the mountains, relax in Tekapo Hot Springs or even have a picnic at Pioneer Park.

Did you know that within a short distance of Twizel there are seven lakes? Lake Benmore, Lake Ruataniwha, Lake Ohau, Lake Pukaki, Lake Wardell and Lake Poaka as well as the picturesque Loch Cameron and some great salmon fishing in canals.

It has been great to see so many visitors to our towns enjoying what the cafés, shops and attractions have to offer. It is always a good sign when you can't find a car park anywhere due to there being so many people in town.

Please remember to be respectful of the environment when you are out and about, and take any rubbish you have with you, or place it responsibly in available rubbish bins. We want our District to be pristine and kept as clean and rubbish free as possible. We are really pleased at how well The Pines freedom camping site at Lake Pukaki is working, with many vehicles staying there each night.

With the tourist season still in full swing and it only going to get busier with Chinese New Year visitors, we urge you to be courteous on the roads, drive carefully, defensively, be prepared for vehicles in front of you to suddenly stop or perhaps be a little unpredictable with the drivers being unfamiliar with our roads and become overwhelmed with our landscape..

Wishing you all the best for the year ahead.

Warm regards

Mayor Graham Smith - Mackenzie District Council

COMPETITION CORNER

## Win with Anti-Flamme

Don't let annoying niggles get in the way of doing what you love. Nature's Kiss Anti-Flamme is great at soothing strained muscles and it works fast. It's made in New Zealand and contains natural ingredients including Arnica, Calendula, Hypericum and Peppermint. Anti-Flamme really works so that you can stay focused.

To be in the draw to win please email us before 15th February [pat@essencemagazine.co.nz](mailto:pat@essencemagazine.co.nz) or write into the office, 22 Chapel St, Timaru.



## We have your outdoor project COVERED



Awnings, Shade Sails, Pergola Awnings and Commercial Grade Umbrellas.



Showroom open 8am - 5pm Monday - Friday

or we will come to your home or office for a free measure and quote

61 Church Street, Timaru | Ph 03 684 9000 | [www.theshadephouse.co.nz](http://www.theshadephouse.co.nz)

## Do you know the road code?

Here's the correct answers from December's quiz

- 1 What is the maximum distance a private motor vehicle (car or ute) is allowed to drive on a cycle or bus lane? **FIFTY**
- 2 What is the recommended minimum distance you should allow when passing a cyclist? **ONEANDAHALF**
- 3 What colour are warning signs? **ORANGE OR YELLOW**
- 4 True or False. You should only speed up to the speed limit once you pass the introduced sign. **TRUE**
- 5 If you're under the age of twenty, what is the legal alcohol limit in micrograms per litre of breath? **ZERO**
- 6 If an intersection has a stop sign, when must you come to a complete stop? **ALWAYS**
- 7 Are you allowed to pass on a flush median? **NO**
- 8 At roundabouts, you must always give way to your **RIGHT**
- 9 Vehicles registered on or after the 1st of January 2002 only need a Warrant Of Fitness test **ANNUALLY**
- 10 When you're on your **RESTRICTED** licence, you are not allowed to carry passengers unless they've been fully licenced for over two years.
- 11 When you turn age **SIXTEEN** you're legally allowed to apply for your learner licence.
- 12 You're at a traffic light, turning right, and the light is green, should you move into the intersection to wait for traffic to clear to complete your turn? **YES**
- 13 What does GVM stand for? **GROSSVEHICLEMASS**
- 14 What is the speed limit from the time you pass an Accident sign until you have passed the crash site? **TWENTY**

[www.scrs.org.nz](http://www.scrs.org.nz)



## MADAM MAT Mat Binding Specialist

Located in the Peter Herron Building  
17 Butler St  
Timaru  
03 688 3876  
Shop Hours  
CLOSED MONDAY  
Tues-Fri  
11am-4pm



## Valentine's dance 9th of February - See you there!



### Julie Neill's Dance Academy

Free valentine's dance 11am - 2pm at the Band Rotunda Caroline Bay. All donations welcome for charity.

For class and social dance schedules or to organise a private lesson please call or contact through our facebook page.

Call Julie for more information  
**03 693 9990 | 027 206 8456**



## Artma Spiritual Gallery

The power of natural crystals, healing & meditation



[www.artmaspiritualgallery.com](http://www.artmaspiritualgallery.com) Royal Arcade Timaru 03 686 9878



# And the Winner is ... *Annabel!*

Annabel Coulter was over the moon to hear these words after an intensive two weeks baking her heart out in The Great Kiwi Bake Off. This Timaru 19 year old, the youngest in the competition, took the title and has had to keep her win a secret since July. In weeks one and three Annabel was awarded the Star Baker for her bumblebee birthday cake and her kiwifruit and lime pavlova respectively, and she wowed the judges Sue Fleisch and Dean Brettschneider with her sensational fish 'n chip illusion cake in the final.

She admits that she was competing against twelve incredible bakers and one of the highs of the competition was the friendships and bonds that they forged. Possibly more so, (as there was no monetary prize involved) they enjoyed sharing ideas and 'foodie' talk both on and off camera. (The competitors had to plan 21 original recipes in just one week

for the ten week programme). The whole programme was filmed over two weeks at the magnificent Kelliher Estate on Puketutu Island in the Manukau Harbour, so the days were long and intensive, sometimes being on the set for 14 hours.



Annabel said that the competition was 'an emotional rollercoaster', especially having to farewell one baker after each session, as they were all incredibly close. They had to complete a technical challenge every week, which was supplied by the judges and the other challenge was an original signature or show-stopper dish. Annabel took it all in her stride, being confident, unflustered and organised. The

judges often commented on how tidy she was, but this is in her nature! Lows were getting a migraine in the semi-final, when she was unable to complete her dish. Annabel thought that that would be the end for her and even the camera crew cried when it happened. Another low was when her gluten-free cake collapsed, but Annabel didn't panic - she simply made another one!

It was very special to have her parents, brother and other contestants present at the final. They are all justly proud of her. This year Annabel is heading off to Le Cordon Bleu patisserie school in Wellington. She has just heard that she has been awarded a scholarship for the school, which will consist of two nine month courses and that she will also be an ambassador for the school at culinary events. So there's no slowing down for this champion baker. In the meantime she is getting lots of orders for her cakes. Well done, Annabel. We are so very proud of you and wish you every success for your future.



## COLUMBUS COFFEE

Visit Columbus today for some well-loved classics from cooked breakfasts, to hearty lunches and freshly roasted coffee. They offer a wholesome and delicious range of gluten free, paleo, refined sugar free, raw and dairy free options. All freshly prepared by their chef using fresh food from local & seasonal ingredients.  
50 Theodosia Street, Timaru. Ph (03) 683 1994



## XPRESSO GREEK SOUVLAKI CAFE

If you think of yourself as a foodie, Xpresso Greek Souvlaki Cafe is the place to go. You'll be hard pressed to find another place that takes its Greek Souvlaki as seriously as this place. With their Greek touch they also cater a wide range of delicious traditional foods, all freshly made. Open 6 days a week.  
3 The Avenue, Pareora Ph (03) 612 6062



## Sopheze weddings




### Catering Venue Hire We do it all

We can offer as much or little as you require. Cut out the stress and use our extensive knowledge and experience to help you plan, create and organise the perfect day.



**Sopheze on the Bay**  
Caroline Bay Tea Rooms, Timaru  
03 688 9613



### TIMARU TOWN & COUNTRY CLUB


Phone 03 688 0020

Here's a short list of what we have in store for our customers:

- 1 restaurant
- 2 petanque rinks
- 4 bars
- Off street car parking
- Self serve TAB
- 23 sporting groups
- 2 function venues
- 18 gaming machines
- Bottle store
- 8 pot black pool tables
- 10 competition dart boards
- Outdoor bowling green

### Perfect for all your celebrations

We pride ourselves on our modern and hi-tech facilities, making us the perfect choice for hosting a range of cost-competitive functions from weddings through to conferences.  
*Enquire with us today!*



99 Douglas Street, Timaru  
www.timaruclubs.co.nz

Subscribe to our newsletter

## BIG pink Valentine's PROMOTION



**Wear something pink and get a discount on everything pink**

## LiquorLand

all the help you need

Liquorland Timaru  
22 Dee Street, Timaru  
Phone 03 688 3149

# DESTINATION... South Canterbury

**SUMMER DISCOVERIES**  
Take a break this summer and spend time discovering South Canterbury. The businesses, the eateries, the beaches, the small towns. You don't need to travel far to realise we have the best of the best right here on our doorsteps!  
Make it your New Year's resolution to always SHOP LOCALLY!

## EnkleDooVery Korna Wallaby Park



Located North end of State Highway 82 on Bathgate's Road, Waimate.  
Phone Gwen (03) 689 7197



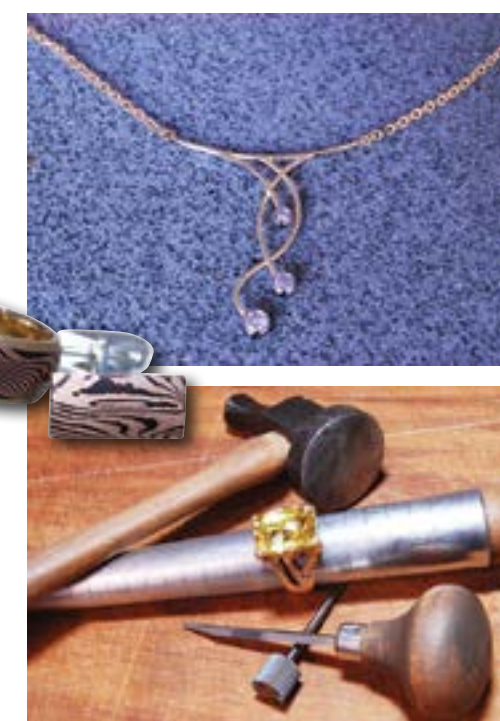
While visiting Waimate, you must visit the town's famous wallabies at EnkleDooVery Korna Wallaby Park. They offer a fascinating experience where you are able to interact with the tame wallabies.  
View, feed and photograph the wallabies in separate enclosures and cuddle baby wallabies when available. All wallabies at the park have been hand reared by Gwen, the "Wallaby Lady" that were brought to her by hunters.  
Winter hours 11 June through to 19 September 10 am to 4 pm open by appointment, weather dependent or by chance. Group bookings essential please. No eftpos or credit card facilities.

## JewelCraft

The newest Jewellery store in Stafford Street, with a unique layout where you can see the jewellery being manufactured. With 30 years of jewellery manufacturing experience we can do it all on site. From a simple ring size to a complex design and manufacture of your next family heirloom.

We offer that personal service where you can talk direct to the jeweller, and a showroom packed with unique one of kind jewellery pieces.

Our motto is "Dare to be Different" so you can embrace your individuality.  
297 Stafford Street, Timaru  
Ph (03) 684 4882  
www.jewelcraft.co.nz



*Amanda's*  
Bridal Services



## Hopkinson's

Hopkinson's are a well known locally owned and operated family business which offers a vast array of gifts and interiors to suit your home.

With beautiful furniture such as the Byron circular dining table. A white shabby chic base and natural timber top (only \$995) and matching chairs (only \$175ea). With no one at 'head' of the table, circular dining tables are great for making everyone feel equally welcome.

Dining rooms are incomplete without a buffet, the matching Byron buffet is an excellent storage solution and opens up a whole range of decorative possibilities.

Pop out and see them today, open Monday to Saturday.



Cnr Seadown Road & Hilton Highway, Washdyke. Ph (03) 688 7662

## Amanda's Bridal



Amanda's Bridal located in Waimate, is introducing her new line of Joe Brown clothing- from the UK. From Jeans to Jackets, to beautiful cotton dresses. You will be pleasantly surprised at the range of pieces she has to offer!

Mandy also has wedding dresses that are designed to suit a range of body shapes, personalities and styles. Whether you already have a vision or don't know where to start, she can help find that dream dress you're looking for.

Open: Tuesday- Friday 10am to 5pm. Saturday by appointment.

29 Queen Street, Waimate. Ph (03) 689 8188 www.amandasbridalservices.co.nz



## Holland Suzuki Cars Timaru

Holland Suzuki Cars Timaru is the place to purchase a brand new or quality used vehicle, with a great range to choose from. Small, medium or large, let the friendly sales staff assist in your quest for your perfect match.

Hollands pride themselves on customer satisfaction and with Hollands exclusive cost free servicing programmes (free) with the purchase of new or selected used vehicles Hollands can future proof your motoring costs.

Easy finance is available, guaranteed transport and much more, so why wait - don't just dream it, drive it at Hollands Suzuki Cars North Street Timaru.

13 - 15 North Street, Timaru Ph (03) 688 8297



**HOLLANDS SUZUKI CARS**

*Hopkinson's Timaru*  
For quality Furniture and Gift-ware





## Jakar Gardens

Jakar Gardens is a unique and interesting function venue with whimsical gardens that hosts many spellbinding pathways. With a friendly vibe and relaxed atmosphere, you can exclusively hire this hidden oasis for Weddings, dinner and disco parties, work conferences, children's indoor disco or outdoor parties, garden group walks and more.

An entertaining venue with gardens that tell many a story and start many a fun conversation. This place will tickle the young and even better, the young at heart.

**Hedley Rd, Seadown Ph (03) 688 2100 or M 021 035 9411 E: maria@jakargardens.co.nz**



## Mint Boutique

Mint Boutique is located in Fairlie. We stock a range of popular NZ fashion brands such as Home Lee, ETC clothing, Addison, Betty Basics, Sass, Fete/Becker, Hammill & Co, Seeking Lola, Hello Friday, Stella & Gemma + so many other beautiful labels! Alongside our clothing we stock a wide range of footwear, accessories & gifts.

Our store and online store provides something for everyone, we have an aim to suit and cater for the needs of ladies all sizes and shapes.

**72 Main Street, Fairlie  
Ph (03) 685 8084  
www.mintboutique.co.nz**

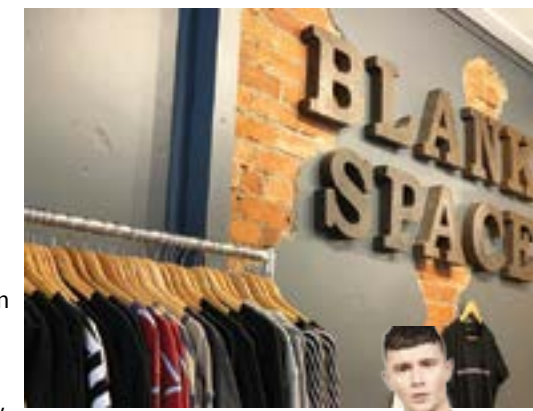


## Blank space

Blank space delivers a stylish and current collection of men and women's streetwear fashion. Established in July 2016, we have been introducing new labels and giving you the best online service.

We have a huge range of new season streetwear clothing and an extensive selection of modern industry homeware and gifts. New arrivals come in all the time so check back regularly to get the latest. Our brands include Rollie, Ricochet, Silent D, Huffer, Federation, RPM, Cooper, Kowtow, Status Anxiety, G-Star RAW + heaps more.

**79 Main Street, Fairlie  
Ph (03) 685 6112  
blankspacethestore.com**



## Tievoli Trading

Tievoli Trading - offering homewares and garden art with a point of difference

At Tievoli we avoid commercialism, we aim to offer something just a little bit different - old and new, upcycled and reproduction. We search wide and afar to find artisan producers and many pieces in our stores are 'one offs'. And we have our own range of beautiful unique furniture - Evoli.

Our service is a bit old fashioned, friendly and helpful. People are always welcome to pop in and browse.

**Visit our shops at  
3 & 76 Talbot Street,  
Geraldine or follow  
us at Tievoli Trading  
on Facebook.  
Ph 0274 313 362**



## The Kitchen Cupboard

The Kitchen Cupboard is commonly referred to as the "Wee Kitchen Shop" in Geraldine, however, for those who walk through the door this is a short lived misconception!

With walls of tools and utensils, shelves of pots and gorgeous casseroles, not to mention the dedicated baking nook to excite any baker or cake decorator - we cater for everything you need to have a functional, stylish kitchen on any budget.

We pride ourselves on the boutique atmosphere that Geraldine is known for so pop in for a visit today, we look forward to seeing you.

**34B Talbot Street, Geraldine  
Ph (03) 693 8632  
www.thekitchencupboard.co.nz**



## The Ringmakers

The Ringmakers is THE destination jewellery store in South Canterbury. The three manufacturing jewellers on site have the skills and vision necessary to make your jewellery dreams a reality. Whether it's an engagement ring, a rebuild of an heirloom piece or a 'just because' treat for yourself, you can rest assured that their close consultation and excellent craftsmanship will result in a piece to be treasured forever. With PANDORA, Stow Locketts, Black Matter and Love in a Jewel in store too, The Ringmakers really is a one stop shop!

**270 Stafford St, Timaru  
Ph (03) 688 1362  
www.theringmakers.co.nz**



## South Canterbury Museum

Explore nature, history and culture at the South Canterbury Museum, Perth Street, downtown Timaru. From fossils to fashions, see hundreds of fascinating things from our region's heritage on display. The Museum is a great place for families to explore the past, with a free Museum Explorers Club for children. A fascinating place for all ages, with events and programmes throughout the year.

**Perth Street, Timaru. (03) 687 7212  
www.museum.timaru.govt.nz  
www.facebook.com/SCMuseum**



## Kitchens Direct

Kitchens Direct seeks to inspire, inform, entertain and connect with New Zealand home owners seeking interior design and remodeling ideas for their kitchen. We offer building, cabinet making, color consulting, custom designing, design, installation, maintenance, manufacturing, shop-fitting and much more. We also do benches, fittings, joinery, refrigerators and sinks.

Consultations is free, and our work is guaranteed. Give us a call or come and visit our showroom.

**4 King Street, Timaru  
Ph (03) 684 0183**



## Marine & Auto

### Evinrude G2

Best in class torque, fuel efficiency and refined handling.

With pure power combustion, the Evinrude E-Tec G2 delivers up to 30% more torque than competitive outboards - the most in its class, every Evinrude E-Tec brings unbeatable low-end torque because of direct injection two-stroke technology.

You'll burn up to 15% less fuel than the leading four-stroke, meaning more money in your pocket less time at the pump.

With dynamic power steering for improved handling and the hydrodynamic SLX gearcase to reduce steering effort, the Evinrude E-Tec G2 delivers a silky smooth yet powerful steering experience.

**39 King St, Timaru. Ph (03) 688 6757**



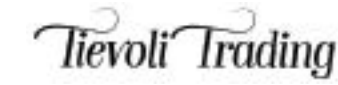
## Plantorama Garden Centre

Supplying South Canterbury with locally grown trees, shrubs and the best plants from around NZ for over 40 years.

New additions to Plantorama's ever expanding planters and giftware range are arriving all the time. There's something in store for every taste, or gift cards for those hard to choose for.

Always looking forward, Plantorama is now selecting spring stock! Including the Matthews range of roses, fruit and ornamental trees. If you are looking for that particular plant, now is the time to enquire. Or drop by and let Plantorama's skilled staff put more enjoyment into your gardening.

**124 Kennels Rd, Timaru  
Ph (03) 688 2248**





# 77 Art and Living showcase local artists

77 Art and Living is a wee rural gallery in Fairlie focusing on art and artists from around New Zealand.

We are lucky enough to have an hugely inspiring and creative pool of local talent to exhibit. Introducing six of our exhibitors from Fairlie and Timaru. Their works are diverse and unique and we are proud to showcase each of them.



Catherine Day



Charlie Miller



Sue Tennent

## CATHERINE DAY, FAIRLIE

Catherine and her husband, artist and poet, Pat White, moved from the Wairarapa to Fairlie five years ago. Catherine credits her musical background, which includes playing piano and teaching, for an appreciation of "the value of repetition process." Part of what she does is "slowing things down." She is inspired by the mountains, rivers and lakes of the Mackenzie, and by its everchanging light.

She has won First Prize, Watercolour, at the SCAS Alpine Energy Art Award 2017, and another of her Watercolour on Paper was selected as a finalist in the Zonta Ashburton Female Art Award 2018.

Catherine is currently working towards a solo exhibition at the Aigantighe Art Gallery in Timaru later this year.

## CHARLIE MILLER, FAIRLIE

Charlie and his wife Bella came to Fairlie via Queenstown, where they settled after 20 years on the west coast of Scotland. Charlie has now set up a generous studio and workshop for himself to take his art forward.

His last exhibition of works was in 1992. A solo exhibition, consolidating his work to that point after finishing studies in Fine Art at Claremont School of Art in 1986 (Perth, Western Australia). Following twenty or so years of a different life, the time was taken for creative "space" and to be drawn back into painting. A solo exhibition in Queenstown in 2017 was the return to art after a long break.

## SUE TENNENT, FAIRLIE

Sue, her husband Hayden and family moved permanently to Fairlie in 2015 after spending years commuting from Brisbane on holiday.

Sue was born in the Highlands of Papua New Guinea, moving to Brisbane Australia as a teenager and now settled in rural New Zealand. "I have always lived in a borrowed land and wished to belong."

Sue's starting point in painting was the discovery of old family photographs of her children's ancestors at their same age before their immigration to New Zealand in the late 1800s. She is intrigued by their solemn expressions, the mystery of their lives and the unknown colours of the old black and white images.

"I love faces, botanical drawings, history, fairy tales and the 'genius loci' or sense of place of a landscape. I love old textiles, china, illustrations, paper dolls and objects and the stories contained in them."

Sue won First Prize, Oil/Acrylic, at the SCAS Alpine Energy Art Award 2018.

## FORM 53, GUS LEEN, TIMARU

Gus is studying Industrial Design at Massey University in Wellington. In the holidays he is home in Timaru, spending time creating in the workshop.

Nature is a huge influence on Gus's designs. He draws inspiration from curvaceous shapes such as seeds, nuts, organisms and native plants. He believes that less is more.

Mid Century modern design is part of his inspiration. Uncluttered lines offer a foundation from which he builds and shapes his products. "Because our eyes are a concave shape, allowing light to pour in from one hundred and eighty degrees, we as humans see the world in three dimensions; we see the curves and bulges of shapes and forms. We need to be surrounded by objects that make us feel comfortable."

Environmental impact is of great importance to Gus. Every material that he uses is hand picked to ensure products are manufactured from the best available.

Gus received highly commended in the ECC Student Craft/Design Award 2018.

He is currently working on a pendant version of the Conic lamp, which is hugely exciting.



Gus Leen



Sarah Thomas



David Thomas

## SARAH THOMAS, TIMARU

Sarah moved to New Zealand in 1999 with her husband, David, and their family from the UK.

"I just love making jewellery." Sarah finds the whole process fascinating, hand carving the creations in jewellers wax, receiving the castings back from the casters, the filing, soldering, stone setting and polishing, right through to seeing the finished object on her work bench.

Nature, animals, birds, insects, and plants all feature in her work. Hand carving lends itself so well to that organic feel. Sarah's one-off pieces are truly wearable art. Sarah was a guest artist at the SCAS Alpine Energy Art Award 2018, featuring pieces inspired by the Mackenzie.

Sarah works from her home studio in Timaru.

## DAVID THOMAS, TIMARU

Born in England, David moved with his wife, Sarah and their family to New Zealand in 1999. He began his working life training and working in a commercial / industrial photographic studio in Portsmouth on the south coast. David learned how to make machines look good and the challenges involved with photographing cleaning brushes with white nylon bristles in black and white! Eight years later he re-trained and moved into teaching which proved equally challenging. "While I have always maintained an active interest in photography, I began moving from the 2D image to 3D work over the past 5 years."

David's work has a strong graphic element reflective of his early experience behind the camera and is influenced by his interests in the Bauhaus movement, soviet realism - sculpture in particular, vintage travel art, architecture, graphic and industrial design.

# Janie Annear An Interesting Life



Janie Annear was appointed Chair of Aoraki Polytechnic from 2014 and then Deputy Chair of Ara Institute of Canterbury from January 1st 2016. However, Janie is probably better known as the attractive Mayor of the Timaru District for three terms and she was made an Officer of the New Zealand Order of Merit for her services to local government in 2014.

This bubbly blonde has a fascinating background. Her maiden name was Grimaldi, but any connection to the royal family in Monaco is yet to be proven! Her maternal grandmother was one of eight children born in Reading in the UK. When her grandmother's father died, money was tight, so her mother kept the four older children, and the four younger children, then aged from 2 -13 (with her grandmother being the eldest) were put into the village orphanage and thence shipped out to NZ, where they were placed in foster homes by the Salvation Army. The two older girls were sent to Dunedin, where her grandmother worked in a fruit shop and the other sister became a maid in a wealthy home. Her grandmother married and had four children, with her husband sadly dying in his early twenties, leaving her to bring up four young children on her own. Janie said, "She was the most wonderful mother and grandmother and her courage through adversity inspired me to believe we can do anything when times are tough". She was also a wonderful seamstress and Janie thinks she gets her love of fashion from her grandmother.

Janie lost her own father at just twelve, leaving her mother a widow at 36. Being the eldest of two siblings, Janie had to shoulder much of the responsibility, like putting oil into the car, helping paint the house and emptying the rat trap in their bach on the Otago peninsula, hence developing her intestinal fortitude! Janie attended Maori Hill primary school and Balmacewan intermediate school, followed by Kaikorai Valley High School and thence to university where she trained to be a primary school teacher. Here she caught the eye of Paul Annear, who was training to be a physiotherapist and she reckons he stalked her!! It worked and they subsequently married. After teaching in Oamaru and Invercargill, they both moved to Timaru where Paul set up a busy private practice and Janie taught at Gleniti School and she also helped Paul as his secretary. Then having their two children meant the postponement of planned overseas travel.

In her mid-thirties, Janie ticked several things off her bucket list - going on stage, singing lessons, art classes and joining a wine group. It was at a meeting of the latter in 1993, and after consuming quite a lot of wine, that Rosie Carruthers suggested Janie should stand for the Timaru District Council, and before she knew it, her path in politics was set! Janie served eighteen years on the TDC, the last nine years as Mayor. She was just the third woman Mayor after Muriel Hilton (1959-62) and Helene McIver (1982-87). She was also one of youngest council members in the country and at first it wasn't a good fit for Janie, because she didn't like long meetings or long speeches. Wynn Raymond was the mayor at the time and he was a wonderful mentor. He appointed her Chair of Community Services, which involved dealing with the people, tourism and economic development. When Wynn stepped down as Mayor in 2004, Janie decided to stand and she thoroughly enjoyed her three terms in the role. It was a great opportunity to make a real difference in the community and she is proud of the achievements in her term of office. Highlights were the 3-2-1-0 Recycling system, the development of CBay and the sale of some of the Council shares in the port of Timaru to the port of Tauranga. However, it was a very busy lifestyle with very little precious family time.

Since stepping down from the mayoralty in 2013, Janie is now a professional director and businesswoman, with experience across a wide range of private sector, local government and central government roles. Janie is one of three Local Government Commissioners and her governance experience also includes civil defence and lottery distribution. She feels she now has a great work/ life balance with time to travel and to enjoy her grandchildren. She goes to the gym every day and she and Paul have recently renovated their lovely home overlooking the Highfield Golf course. This busy lady is still bursting with energy and the Timaru District is the richer for having her in our midst.



Janie with her family at their bach

**WAREHOUSE LIQUOR**

Check out our website or instore for our weekly top ten specials

**Summer Deals!**

- Double Brown 18 pack cans **\$20.99**
- Vodka Cruiser 12 pack bottles **\$20.99**
- DB Draught 24 pack **\$32.99**
- Export Gold 24 pack bottles **\$32.99**
- Dewar's White Label Scotch 1L **\$33.99**
- Seagers Gin 1L **\$30.99**

Valid until 04 February 2019

35 Browne St, Timaru | P 03 688 1012  
www.warehouseliquor.co.nz

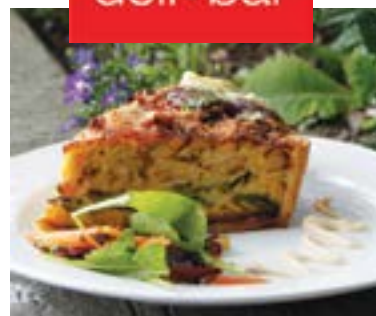
## 77 Art + Living



77 Main Street Fairlie  
Open Wednesday to Sunday 10-3

**eat**  
deli • bar

Breakfast • Brunch • Lunch  
Underground Coffee • NZ Wines  
Gluten Free is our Speciality



eat Deli & Bar, provides customers with a wide range of healthy delicatessen style food made on site, dine in or take away. Come in for the best breakfast in town!

**Cafe on the Corner**  
76 Main Street, Fairlie  
Ph (03) 685 6275

matilda & the metalman  
DESIGN STORE & MORE



Stockists of a large range of NZ made products including these delicious boutique bibs & luxury teethers. Handmade in Geraldine, NZ with lots of love & attention to detail by the super clever Sara from Funny Bunny Kids.

OPEN 7 DAYS • 76 Main Street, Fairlie 027 340 7343

Way of Life!

**SUZUKI**

LIMITED EDITION

# SWIFT PLUS

- + 16 INCH ALLOYS
- + REAR UPPER SPOILER
- + BLACK SIDE BODY-MOULDS
- + BLUETOOTH & CRUISE CONTROL
- + SAT NAV, REVERSING CAMERA, ANDROID AUTO & APPLE CARPLAY IN THE AUTO MODEL

FROM **\$20,500** PLUS ORC

**NO DEPOSIT FINANCE**

FROM **\$88** PER WEEK\*

\*\$87.83/week based on Swift Plus Manual, \$20,500 plus ORC, total amount payable \$22,923.63; \$96.27/week for Swift Plus Auto, \$22,500 plus ORC, total amount payable \$25,176.47, nil deposit 3.9% p.a. fixed interest rate and 5-year term. On payment of on-road costs to the Dealer, finance payments include a \$300 documentation fee and \$16.35 PPSR fee. Offer available until 31 January 2019 or while stocks last. Excludes fleet purchases, demo vehicles and all other promotions. Normal lending and credit criteria apply. www.suzuki.co.nz www.suzuki.co.nz

**HOLLANDS SUZUKI CARS**

13-15 North Street, Timaru 03 688 8297 [www.hollandstimaru.co.nz](http://www.hollandstimaru.co.nz)





words: **Brent Melville** images supplied



# Castle Claremont turns back the clock



**The Claremont Castle Garden Party - come along**  
 When Saturday, 9 February from 11am - 6pm  
 Where 222 Mt Horrible Road, Claremont  
 Entry At the door - \$10 adults, \$5 kids, \$25 for the whole family. (All money raised goes to Make-A-Wish)  
 Check out Claremont Garden Party on Facebook  
[www.facebook.com/Claremontgardenparty](http://www.facebook.com/Claremontgardenparty)

A century is a long time between drinks.

Castle Claremont owner, Rob Young, is opening up the estate's more than 7 acres of sweeping gardens in early February for a charity Garden Party.

More than 2,000 people are expected to attend.

It's something of a blast from the past, with Claremont renowned for its outdoor picnics and garden parties back in the 1890s. Hosted by the Rhodes family, in those days the entire district would be invited, with cooks preparing food in the kitchen for days in advance.

The modern event will feature more than 30 food and variety stalls, local bands will be on offer a bunch of stuff to keep the kids happy - including apple bobbing, croquet, trampoline and swings. Guests are urged to pack a picnic basket and blanket and refreshments. It will also feature a hole-in-one competition, at \$2 a ball, with all money raised to the Make-A-Wish Foundation.

The homestead, which is today used as a wedding venue, bed and breakfast for select travellers and as a conference facility, was built in 1884 as a wedding present for early settler George Hampton Rhodes and his wife Henrietta. Castle Claremont remained in the Rhodes family until the turn of the Century when it was leased to the Crown, used

as the residency of the then Governor of New Zealand, Lord Ranfurly and later, Lord Onslow.

After such an illustrious first few decades, in 1932 the property was bought by the Marist Brothers who used it as a religious training centre (a Novitiate) for almost 70 years, adding a chapel during that time.

"It's one of the reasons the place isn't well known. The Marists were self-sufficient, observed strict codes of silence and had little need to go to town," said Rob, who will also be conducting tours of the residence on the day.



Maddi Bag Was \$85 **NOW \$45** ▼

▲ Bag Was \$55.90 **NOW \$35**

Bag Was \$59 **NOW \$39** ▼

Clutch Was \$69 **NOW \$39** ▼

Satch Leather Bag Was \$90 **NOW \$63** ▼

Emporio Leather Bag Was \$195 **NOW \$95**

**The Accessory Shop**  
 268 Stafford Street, Timaru  
 Ph (03) 684 5220

Swimwear \$125

Swimwear \$139

Swimwear \$145

Swimwear \$179

Swimwear \$139

Swimwear \$125

**FASHION FOCUS**  
 Highfield Mall, Wai-iti Road, Timaru  
 Ph (03) 688 8711  
[www.fashionfocus.co.nz](http://www.fashionfocus.co.nz)

essential | fashion

**JewelCraft**

*Dare to be different*

Sterling Silver Riana Pendant **\$399**

10k Rose Gold Diamond Hoops **\$399**

10k White Gold Diamond Hoops TDW 0.10ct **\$399**

9ct Rose Gold Smokey Quartz Pear Shape Earrings **\$499**

Flat Baroque Silver Grey Fresh Water Pearls **\$399**

Natural Black Spinel Necklace **\$265**

Workshop & Showroom  
 297 Stafford Street, Timaru  
 ph 684 4882  
[www.jewelcraft.co.nz](http://www.jewelcraft.co.nz)

**BLACK MATTER**

Medium Penumbra Pendant, \$349

Penumbra Studs, \$299

Pyramid Earrings, \$319

Twisted Pyramid Pendant, \$599

Reef Knot Pendant, \$519

Reef Knot Earrings, \$229

Svelte Earrings, \$649

**The Ringmakers**  
 Manufacturers of Fine Jewellery  
 270 Stafford Street, Timaru  
 Ph (03) 688 1362  
[www.theringmakers.co.nz](http://www.theringmakers.co.nz)

**PANDORA**

*Treat your Valentine*

PANDORA Rob Bot Charm, \$89

PANDORA SHINE Cupid and You Hanging Charm, \$99

Limited Edition 2019 PANDORA Club Charm, \$119

PANDORA Sparkling Arrow Ring, \$99

PANDORA SHINE Arrow of Cupid charm, \$79

Skin Footwear Eastmont 189.90

Skin Footwear Eastmont 189.90

Django & Juliette - Renard 249.90

Django & Juliette - Renard 249.90

Top Ten Sherron 239.90

Top Ten Sherron 239.90

**STOMPZ shoes**

236 Stafford Street, Timaru. Ph (03) 684 3389  
[www.mode.co.nz/stompz/](http://www.mode.co.nz/stompz/) Follow us on facebook

Good Gryf Optical & Sun \$399

Good Gryf Optical & Sun \$399

Land Rover Optical \$449

AnneEtValentin Men & Ladies \$699

LA Eyeworks \$769

Land Rover Sun \$325

**CANON STREET OPTOMETRISTS**  
 Canon Street Optometrists  
 26 Canon Street, Timaru  
 Ph (03) 688 9791



# 2019 HOME REFRESH

**MAREE HYNES GIFTS & INTERIORS**

Have you been considering a change in your home? Perhaps it is time for a major design change or your current space just needs a quiet refresh. Look no further than Maree Hynes Interiors. With 20 years experience in creating unique and stylish homes, and a passionate design team, Maree and her staff are ready to help you create your perfect home. Make a statement with new curtains or choose from their large selection of blinds for a clean

modern aesthetic. To get an in-home consultation, simply make a time that suits you, or pop into the showroom to be inspired and a member of their team will be happy to help. We do FREE measures and quotes.

**To get in touch with Maree and her team simply call 0800 439 463 or just pop into the showroom on 19 Theodosia Street Timaru.**



While Maree has been away setting up her exciting new business the staff have gone ORANGE DOT CRAZY in the showroom! Each Orange dot represents 50% off the current price. This includes selected Throws, Cushions, Furniture, Homewares and Art. Pop on down to 19 Theodosia Street, before Maree comes back!

**ORANGE DOT SALE**

19 Theodosia Street, Main Road (opposite Ara Polytech) Timaru  
Servicing High Country, Mid and South Canterbury areas  
Locally owned and operated

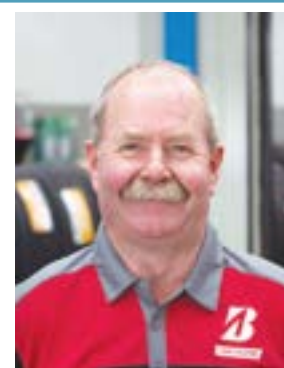
Phone: 03 686 6784  
[www.mareehynesinteriors.co.nz](http://www.mareehynesinteriors.co.nz)  
Follow us on Facebook & Instagram



**MAREE HYNES GIFTS & INTERIORS**

# ASK AN EXPERT

If you have a question you would like our panel of experts to answer please drop us a line at [info@essencemagazine.co.nz](mailto:info@essencemagazine.co.nz)



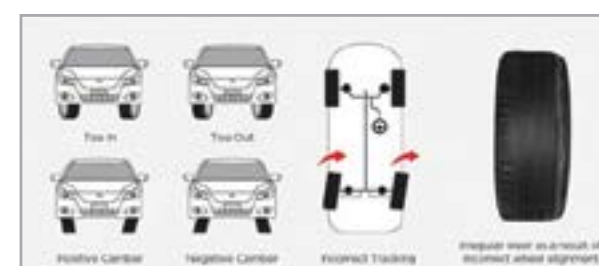
## Michael Colvill

Michael is Wheel Alignment and tyre technician at Bridgestone Tyre Centre with over 40 years experience.

### Do things feel a bit out of line?

Having the correct wheel alignment is important when it comes to the safety and the lifespan of your tyres - even your vehicle's fuel efficiency. Wheel alignment can change by simply hitting a pothole, having faulty suspension or any number of other reasons.

The wrong wheel alignment can result in irregular wear on your tyres, low fuel efficiency and extra strain on the driver.



### If you answer yes to any of the following questions you may need your wheels re-aligned.

- Is your car resisting your steering?
- Do you feel like your vehicle is pulling to one side or the other?
- Have you recently had new tyres fitted?
- Have you had the components in your suspension replaced?
- Have you hit anything on the road such as a pothole?
- Has it been 6 months, or have you travelled more than 10,000 km since your wheels have been re-aligned?

If you're questioning your vehicle's wheel alignment, bring it to your local Bridgestone Tyre Centre for a check. Using the latest technology, our experienced technicians will check your wheel alignment, as well as the condition of your suspension components to make sure it's all in order.



Heaton Street, Timaru  
Ph (03) 687 9270 Email: [tyres@sc.toyota.co.nz](mailto:tyres@sc.toyota.co.nz)



## John Simpson

John has been providing audio and video solutions to his customers for over 25 years.

### Why use an Audio Specialist?

Many technologies, both domestic and commercial, have changed and been improved in the time John has been in business.

For example, there was a time when the biggest TV set was a 32" screen size. Now they can be over 100" screen size.

Projectors are having a resurgence as are record playing turntables. Vinyl records still sound fantastic and have a warmth that is unique to this music playback format.

With some of the latest audio and video formats, there have been a few issues that some consumers are not happy about. Customers are often asking "why am I struggling to hear some TV programmes"? No, you are not losing your hearing. Instead have a look at the modern flat panel television construction. The audio speakers are often on the rear of the panel or on the bottom edge. This means the audio is no longer directed to the listening position. Old TV technology had the speakers on the front of the display.

To overcome this listening enjoyment distraction, we should be looking to an off board sound system, such as a sound bar or separate audio systems. It is worth checking out a solution to meet your specific needs.

Home Automation - A lot of modern homes are now introducing a system management to control audio and video distribution throughout the home. Zoned audio routing is a simple process and manufacturers such as Bose have sound solutions to address music playback. Most use the homes WiFi network to control and playback in different rooms.

Bring some enjoyment back into the television entertainment experience. Good sound is just as important as good picture quality. Test drive a sound system at Living with Style.



300 Hilton Highway, Timaru. Ph (03) 688 2960



## Daniel Naudé

Road Safety Coordinator for the South Canterbury Region.

Educating our people to improve road safety in our region.

### Passing the driver's licence test at the first attempt

The World Health Organisation declared that road fatalities and injuries are one of the biggest social challenges of our time, especially for young people under twenty five years of age.

Using our roads is potentially a high risk activity, and the better trained drivers we let into the system, the better for all of us.

The days of getting a driver's licence, the "she'll be right" way, are over. Unless you are highly skilled AND don't have bad driving habits, you are not going to be able to coach your child to get a licence at the first go.

All driving instructors must have a valid current "I" endorsement for the class vehicle they instruct on. This licence must be presented on request by any applicant.

#### The cost for getting a licence is shown below:

|                                     |                 |
|-------------------------------------|-----------------|
| • Learner licence application       | \$48.20         |
| • Learner licence theory test       | \$45.70         |
| • Restricted licence application    | \$48.20         |
| • Restricted licence practical test | \$86.60         |
| • Full licence application          | \$49.60         |
| • Full licence practical test       | \$59.90         |
| <b>TOTAL</b>                        | <b>\$338.20</b> |

These costs do not include retests. Resitting the restricted test will cost another \$86.60 and for the full licence test it will be \$59.90 for every test.

Common mistakes that leads to failing your driving test:

- Going over the speed limit
- Forgetting to signal (especially at roundabouts)
- Failing to look for other traffic
- Not giving way

Many behave like having a driver's licence is a basic human right, which it's not. Some common misperceptions:

- Driver's licence tests are set up to make money.
- There is a set percentage of applicants that must be failed regardless of the outcome of their test.
- It is easier to get your licence at some testing stations.
- You can "wing" it by being nice to the testing officer.

It would make good sense to get a few lessons with an endorsed instructor and significantly increase the chances to pass the test at the first attempt. The instruction includes coaching them on safer driving choices.

Daniel Naudé Ph (03) 687 7235  
[www.scrs.org.nz](http://www.scrs.org.nz)



# Less speed Less harm

Visit [scrs.org.nz](http://scrs.org.nz) for more information

New Zealand Government





**WE HAVE YOUR  
CAMPING GEAR,  
RIGHT HERE!**



**\$75** each

**Escape**  
**2 Shelf  
Camping Pantry**

Lightweight and strong. Quick and easy to assemble. 2 x solid shelves and storage pockets on outer side. Mesh backing for ventilation & hard top surface for use as a table top.

268839



**\$14<sup>98</sup>** each

**Solar Shower**  
20 litre.  
Simply place in sunlight to heat water for a hot shower at the campsite.

268834



**\$23<sup>60</sup>** each

**Energizer**  
**Vision Headlight**  
100 Lumen output. 2 light modes: high/low. Up to 50 hours run time. 30m beam distance.

290886



**\$54<sup>98</sup>** each

**Life**  
**Beach Umbrella**

2300mm diameter. Removable side wings to convert from umbrella to sun shelter.

308152



**\$219** each

**Gasmate**  
**Cruiser Portable BBQ**  
H 360mm W 420mm L 550mm.  
Stainless steel burner. Handy hood mounted rack for warming food.

083508



**\$49<sup>90</sup>** each

**Aqua Lamp**  
**Eco Emergency Lantern**  
Just add water and salt to produce over 100 hours of continuous light.

323288



**\$99** each

**EXCLUSIVE**  
**Nouveau**  
**Folding Gazebo**  
H 2500mm W 3000mm L 3000mm  
Quick to pop up and pull down.

229273



**\$12<sup>98</sup>** each

**Kiwi Camping**  
**Collapsible Water Carrier 20 Litre**  
Lightweight, ideal for camping. Can be folded flat when not in use. Can be frozen.

268835



**\$129** each

**NEW PRODUCT**  
**My Time Quilted Double Rod Hammock**

140cm x 200cm. Wheat grain. Quality craftsmanship that is made to last. 200kg capacity.

322906



**\$10** each

**NEW PRODUCT**  
**X-Shot**  
**Tornado Tide Water Blaster**  
Can shoot up to 10m, 550ml capacity.

322083



**\$28<sup>98</sup>** each

**EXCLUSIVE**  
**Chilly Bin 11 Litre**  
Ideal for day trips and picnics. Keeps cool for up to 30 hours.

322916



**\$29<sup>98</sup>** each

**NEW PRODUCT**  
**Bestway**  
**Double Water Slider**

5.49m. Double lane slide lets you race your friends. Connects to garden hose.

322051



All offers valid from 25th January till 25th February 2019 or while stocks last. Prices are subject to change. Available at Mitre 10 MEGA Timaru & Ashburton, by order from Mitre 10 Oamaru.



**Mitre 10 MEGA TIMARU**  
Bank Street, Timaru  
03 687 2033

**OPEN 7 DAYS**  
Monday-Friday 7am - 6pm  
Saturday 8am - 6pm  
Sunday 8am - 5pm

**MITRE 10  
MEGA**

**TIMARU**