

essence

essentially...north canterbury



15 Feature
Rangiora Eyecare

Essential **12**
Mother's Day
Gift Ideas

TWINE
FURNITURE, ANTIQUES & COLLECTABLES

Buy and Sell
Estates and small lots

Open Wednesday - Sunday 9.00am - 4.00pm



Come and see us at our new location
OLD SCHOOL COLLECTIVE
1429 Main North Rd, Waikuku

Phone: 03 312 2152

ARTHUR-NELLIE

UPHOLSTERY & FURNITURE DESIGN

We provide a full upholstery service specialising in all areas, producing a high quality standard.

No job too big or small.




Kent McCreanor
Cell 027 200 0031
Ph/Fax (03) 312 0570
arthur.nellie@gmail.com

GWAMMA'S ORIGINALS

Offering beautifully handmade New Zealand items

027 487 3323
E gwamma@gmail.com
Gwamma's originals
www.gwammasoriginals.co.nz

id Incredible discoveries
The Brickmill, Waikuku



Mon - Fri 10-3, Sat & Sun 10-4
Ph. 03 312 7978

Gwamma's Originals
specialising in handmade muslin, wool and jute products. Sourcing only the highest quality materials at competitive prices. We can also make to order.
Ph. 027 487 3323



Fabulous new stock arriving daily at **Twine**.
Open Thurs - Sun in the Brickmill, Waikuku
Ph. 03 312 2152



ID Gallery - Come in and view our eclectic and creative range of art works, giftware, homewares and more. Something beautiful and different for everyone. In the Brickmill, Waikuku
Ph. 03 312 7978



Resene ColorShop Rangiora
Enjoy the gift of colour, with the Resene Classics Collection, a curated collection of timeless and favourite Resene colours that you can enjoy for years to come. Testpots from \$4.60.
83 Victoria Street, Rangiora, Ph. 03 313 7326 or shop online shop.resene.co.nz



Arthur Nellie - Whether you require a chair, sofa or a complete suite, the workshop will custom produce any design made to measure in premium New Zealand leather or top quality fabrics. Free quotes, local pickup and delivery.
Ph. 03 312 0570



Done & Dusted - Wander through the stables built in 1864 that now display pottery, books, old tools and the odd retro item. Then hop on over to the old dining room in the Cust hotel to immerse yourself in memories of days gone by. Vintage crystal, China, linen and antiques.
Ph. 027 670 9863



Done & Dusted Collectable Store
THE JEWEL IN CUST'S CROWN!



Open 7 days, 10am - 4.30pm
1709 Cust road (Cust Hotel) Ph 027 670 9863

quality paint colour advice wallpaper curtains

Get a superb finish on your decorating projects with quality Resene paint, colour and helpful advice.

Come in and experience the Resene difference today!

Rangiora Resene ColorShop
83 Victoria Street
Ph: (03) 313 7326
or shop online shop.resene.co.nz

100% KIWI
the paint the professionals use

contents

I feel a touch of nostalgia putting this issue together. In our very first issue (September 2003) we featured Rangiora Eyecare in our social pages - it was such a big deal, getting our first magazine to print but also capturing our first 'Out & About'.

In this issue we once again feature Rangiora Eyecare - The business, the staff, their new state of the art equipment but most of all their return to their new building on the corner of Ashley and High Streets Rangiora. Many of you will have noticed the renovations over the past year or so and the striking artwork on the side of the building. Rangiora Eyecare invite you to have a look through this week 6th - 10th May until 7pm. Check out our feature on page 15.

As we come to celebrate Mother's Day this month being a new mother can be tough even in the best of circumstances. So couple that with being a teenager and other life challenges and things can get really tough. That's where young parent colleges, like Kaiapoi's Karanga Mai, come in. Our story on page 6 gives an insight into the support of young mothers.

On the kitchen table in Jess Ormsby's seaside cottage, there is a small wicker tray holding a neatly placed row of sunglasses. Beachy, tidy and with a touch of style. Read about how, with an eye for detail, you can create a stylish home, combining second-hand treasures. Page 8

Have a great month and be kind to your mother on Mother's Day (actually every day!) - Dorothy

contact us:

Dorothy McLennan - Publisher
dorothy@essencemagazine.co.nz
Ph: 0274 507 532

Larnya Bourdot - Graphic Designer
info@essencemagazine.co.nz

Mandy Buchan - Advertising Account Manager
mandy@essencemagazine.co.nz
Ph: 027 651 0731

Essence contributors; Pattie Peglar, Grant Shanks, Rob Cope-Williams
PO Box 295, 113a High Street, Rangiora, North Canterbury.
Ph: 03 313 1811 | Fax: 03 313 1810 www.essencemagazine.co.nz



WIN WIN

\$50 FOOD/BEVERAGE VOUCHER

To be in the draw to win a \$50 food/beverage voucher, like our Facebook and/or Instagram page, follow us and tag a friend on our giveaway post or email us for your chance to win. Competition ends Sunday 26th May 2019.

GOOD HOME

Essence Magazine New Zealand
Email - info@essencemagazine.co.nz

Congratulations Sarah Long, our winner of last month's food and beverage voucher.



front cover: Rangiora Eyecare are set to take eye care in North Canterbury to a whole new level with their brand new 400-square-metre premises on the corner of High Street. Photography: Brendan Holt - Display Eyecare Feature Design: Laura Good - Create Design

Make you feel like you again



Dentures from Lovebite will boost your confidence, give you back your youthful smile, and best of all...

... make you feel like you again

Crafted by internationally renowned dental technician - Richard Greenlees.

LOVEBITE
lovebite.com

By Appointment only. Consultation fee applies.

402 Montreal Street, Christchurch | 03 379 1222

DIRTY ROTTEN SCOUNDRELS

BOOK BY JEFFREY LANE MUSIC + LYRICS BY DAVID YAZBEK

BASED ON THE FILM 'DIRTY ROTTEN SCOUNDRELS' WRITTEN BY DALE LAUNER AND STANLEY SHAPIRO + PAUL HENNING

RANGIORA TOWN HALL 2-18 MAY
NCMS.CONZ // 0508 TICKET

mainpower

Pay by **LAYBUY**

Get it done now

Pay in 6 easy payments

HAIR HANDLERS

Monday - Saturday 9am - 5pm
Late Night Tues, Weds & Thurs | Saturday till 4pm

101 High Street, RANGIORA | (03) 313 6949 | www.hairhandlers.co.nz



ARE YOU STRUGGLING WITH NIGGLY HEALTH ISSUES THAT JUST WON'T RESOLVE?

- Unable to lose Weight?
- Insomnia?
- Anxiety?
- Low Mood?
- Hormonal Problems?
- Digestive Issues?

Naturopathy and Herbal medicine can help!
Call Jo today to arrange an appointment for a comprehensive assessment and wellness plan.

Jo Robertson
Naturopath & Medical Herbalist
Ph 027 279 8444 | Naturopath164@gmail.com

WE NEED YOUR ARTWORK!

APPLY NOW

Forms available online
kalapoiartexpo.co.nz

or can be picked up from
Waimakariri Libraries

CORCORAN FRENCH ART EXPO
JULY 13 & 14



Celebrations at Country Lane

On Thursday the 4th of April, Karla Lattimore and Debbie Smith celebrated with staff and customers their first year in business at Country Lane. They would like to thank everyone for their loyalty and continued support.



1. Debbie Smith and Karla Lattimore 2. Debbie Smith, Jan Gardiner, Margaret Bradshaw, Wendy Bayler and Karla Lattimore 3. Sally Telfer 4. Margaret Bradshaw, Wendy Bayler and Jan Gardiner 5. Jo Robertson and Pam Lindsay 6. Rosie Wardrop and Karla Lattimore

Cocoons' 8 Year Anniversary

On 5th April, Jess and Sally, along with their wonderful team at Cocoon Beauty and Day Spa, celebrated their 8 year anniversary, along with many of their valued clients and friends.



1. Ella Houghton, Jess Telfer, Kate Howie, Rebecca Bettridge, Sally Telfer and Madison Miles 2. Amanda Coster, Faye Francis, Kate Townsend and Maree Pope 3. Rachel Caldwell, Sarah Harrison and Lissa Murray 4. Celeste Pohio, Kellie Grieve and Rebecca Kreisel 5. Jonathan Claydon 6. Faye Gread and Gabrielle Gread 7. Debbie Smith and Karla Lattimore 8. Jeni Sparks and Leanne Newsome

COCOON BEAUTY & DAY SPA

Pure Fiji Hydration Pack \$50

The perfect gift for Mother's Day

Contains 120ml Hand Creme, 90ml Body Mist and Pina Colada Lip Balm (valued at \$70)

160 High Street, Rangiora | Phone: 03 313 5552 | www.cocoonbeautyanddayspa.co.nz



BIG ASIA SALE

GRAND TOUR OF INDOCHINA

SAVE UP TO \$600PP ON SELECTED GROUP TOURS OF ASIA DEPARTING BEFORE 14 DEC 2019

FLIGHTS & 28 DAY FULLY INCLUSIVE CLASSIC TOUR

Witness the traditions, scenery and sights of Vietnam, Laos and Cambodia. Marvel at the intricacies of Angkor, the majesty of Halong Bay and the tranquility of Luang Prabang.

from **\$8180** pp
share twin from Christchurch.

PACKAGE INCLUDES

- Return economy flights from Christchurch • All Accommodation, meals, sightseeing, entrance fees & domestic flights • English speaking guides
- Visa fees for NZ passport holders

HIGHLIGHTS SAIGON – MEKONG DELTA – HOI ANN – HUE – HANOI – SAPA – HALONG BAY – LUANG PRABANG – TAKBAT – KUANG SI WATERFALLS – VAN VIENG – VIENTIANE – PHNOM PENH – ANGKOR – TONLE SAP – SIEM REAP

BETTER TOGETHER 96 HIGH ST | 03 313 0288 | RANGIORA.HOT.CO.NZ **HOUSE OF TRAVEL**

CONDITIONS: Valid for new bookings only departing 01 Jun – 14 Dec 2019. Valid for sales until 31 May 19 or until sold out. Due to limited availability of special pricing on departures and availability of airfares the discount may not be offered on all departures. Prices are per person, twin share. Flights are economy class from Christchurch. A deposit of \$2000 per person per tour is required within 24 hours of confirmation. Additional charges: Tipping (PMB/TTOP) apply. Not valid in conjunction with other offers (except loyalty discount). \$600 discount for tours over 20 days duration, \$400 for tours between 15 and 19 days and \$200 discount on tours less than 15 days. Price and availability correct at time of printing 10 Mar 2019. All tours are subject to availability. Tipping is not included and is subject to change—see tour details in 2019 brochures or visit wendywu.com on nzbig-Asia-sale. To connect with airline schedules additional arrangements may be required at an additional cost. Further conditions apply. For more information see ask your House of Travel consultant for full details.

Wendy Wu Tours

Hagley North Canterbury Public Opening Day

On Friday evening Hagley Windows & Doors and Hagley Kitchens staff and guests celebrated the opening of Hagley North Canterbury, a new showroom and sales office offering joinery solutions for new builds and renovations. Waimakariri District Mayor David Ayers joined them to officially open the new premises. A public opening with a bouncy castle and The Sound FM radio running the BBQ completed the weekend celebrations.



1. Ashleigh Balvers, David Brill, Jemma Darling, Louise Sturgess and Nathan Walker 2. Tom Ashwin, Jemma Darling, Fiona Kilty, Ashleigh Balvers and Jason Cruickshank 3. Julie Ball and Phil Roskilly 4. Geoff Ball, Mayor David Ayers and Nathan Moore 5. Katherine Vigers, Alexandra Lust and Beck Galbraith 6. Dianne and John Brown 7. Jake Henson, Clete Elliot and Peter Jensen 8. Phil Roskilly, Gaylene Tomkinson and Geoff Cropp

Cheviot Cricket Club

A fundraising event for Canterbury Country Cricket was held at the Mainpower Oval in Rangiora last month. The Event was themed "A Night on the Park", guests speakers were Gary Stead, New Zealand Cricket Coach and Frankie MacKay Canterbury Magicians and Black Ferns player. Ben Harris was the MC. Thank you to all the businesses and people who contributed auction items and prizes for the night.



1. Lisa Astle and Rob Frew 2. Phil Beatson and Ben Harris 3. Gary Stead and Rachel Stead 4. Alison Kerr, Peter Williams, Peter Fulton, Lindsay Kerr, Frank Rapley and Jason Sheat 5. Rupert Young, Tim Gruijters and Ben Fitzgibbon 6. Winsome Dormer and Margaret Sheard 7. Wendy Mackay and Frankie Mackay 8. Dave Evans and Victoria Robertson



Because life is important.

No two stories are the same. We recognise and embrace each person's unique story.

Lamb & Hayward
FUNERAL DIRECTORS

WAI-MANA CHAPEL
92 Kippenberger Avenue,
Rangiora | Ph 03 313 1430
www.lambandhayward.co.nz



words: **Pattie Pegler**

Young Parents College

Being a new mother can be tough even in the best of circumstances. So couple that with being a teenager and other life challenges and things can get really tough. That's where young parent colleges, like Kaiapoi's Karanga Mai, come in.

"If they are well supported, it's really do-able"

Karanga Mai opened its doors in 1992 and since then has been supporting teenage parents from all over North Canterbury and Christchurch, helping them to continue, or in some cases re-engage with education. The college currently has around 15 students and, perhaps unsurprisingly, it's predominantly teen mothers that pick up the responsibilities for caregiving. There have only been two male attendees in the past three years says principal Rachel Hawthorne. "It is a pretty high oestrogen environment," she admits.

The small block houses a nurse's room and a large, comfy communal space with a dining table, couches and beanbags where the morning

sun pours in and there are separate breakout rooms for morning classes. Outside there are picnic tables and benches and just over the fence is the early childhood centre. It's a mother-friendly environment where students can pop next door to see their children whenever they need - be it to breastfeed or just to spend their lunchtime with them.

And the schedule has been given the same degree of thought. There is no rushing to get to school and then hurrying from class to class all day. The school day starts at 9.30am and to help make things easier for students juggling nappy bags with study, a bus collects them and their babies and brings them to the college. Students are encouraged to aim for their NCEA qualifications and in the mornings there are typically three different classes covering three different subjects - these involve the basics like maths, english and science. But for more specialist subjects such as hospitality or physical education students might head over to the mainstream school for some sessions. Lunch is at 1pm, "because mornings are the most productive time, we push lunch out to make the most of it" explains Hawthorne.

For many of the students here early motherhood is not their only challenge. Teenage years can be difficult for most people and these young women may not have a big support network outside of the college, they may be struggling with other problems too. "They often have very complex family lives and may have multiple issues - relationship issues, self-management issues" explains Rachel. The set up at Karanga Mai reflects this with added services and support such as a visiting nurse, a social worker and guest speakers who come to talk on parenting, healthy relationships and other relevant issues.

But despite these multiple challenges, these young women embrace motherhood. "Many of the students here will tell you that having a child was the best thing that ever happened to them, it's given them new motivation," says Hawthorne.

As we're talking a young woman comes in offering round a paper bag of freshly baked cheese and bacon pinwheels.

"Try one of these, I just made them," she says with a grin.

Brianna Johns-Mills is 20 years old and is coming to the end of her time at Karanga Mai, she has been studying hospitality and, if the pinwheels (delicious) are anything to go by, she's been doing a good job of it. She only has a few weeks left at the school and will soon be making choices about what to do next - perhaps looking for work in hospitality or continuing her studies at Ara. Thanks to Karanga Mai and her own commitment - she has choices.

More than 30% of the students from Karanga Mai go into tertiary education with some of last year's graduates going off to start a nursing qualification, another embarking on a BA course at Canterbury.

The teenage pregnancy rate has halved over the last 10 years says Hawthorne. But for those young women that do fall pregnant in less than ideal circumstances, Karanga Mai helps to support them through a difficult time. It allows them to continue studying and to get an education that can give them choices and independence in life.

"If they are well supported, it's really do-able," says Hawthorne "And you can really make a difference to two generations, the student and their child".

Karanga Mai are always happy to hear from local organisations and businesses that may want to support or partner with them.



Stuart and Claire Morris
Business Owners

Gaining a Competitive Edge

No doubt you are hearing and reading about the market cooling off locally. To a certain degree we would agree, but at this point it is hard to see any major correction occurring - well locally at any rate. Instead, what we are seeing is the market returning to more even after a long and sustained period of growth following the Canterbury Earthquakes. This is supported by a couple of key statistics; the median days on market (how long it takes to sell a property) has increased by about 10 days on a rolling average from 35-45 days to 45-55 days, with some variation month to month in individual North Canterbury markets.

The number of sales per month has also levelled off a bit. This tells us that there are slightly less sales occurring and they are taking slightly longer to occur than (and this is key) **what we have been used to.**

The statistics are still very healthy compared to a declining market which we saw in 2008 where days on market ballooned out to well over 2 months and the volume of sales dropped by over a third from what we are seeing today. What is interesting is that the median sale price is staying pretty strong across all North Canterbury markets. It has levelled off but doesn't seem to be diving yet. This is normal supply and demand stuff, the supply is larger, the demand hasn't gone up so prices have levelled.

So, is it still possible to get a great result in these conditions? YES, just as it is possible to get a poor result in a strong market! It does mean you and your salesperson need to get a few more things right to give yourselves a better chance.

• **Presentation** - when the market evens out and supply starts to increase you must present your property in the best possible light to stand out from the other homes on the market. Take the time to do all the usual recommended things - clean, declutter, tidy up the gardens, touch up or replace any broken/worn elements of your property. Be aware if you are spending money it may help you sell but you may not necessarily get it all back so keep to a budget.

• **Photography and Videos** - make sure your property looks incredible in the places your buyer is likely to see it. This starts with professional photography or video footage. No matter where buyers see your property; online or in more traditional media like print, it will be the photos that

get them excited. A salesperson taking photos on their phone is not acceptable any more - you and your property deserve better.

• **Marketing** - make sure your salesperson offers a mix of marketing that will give you the best chance of getting in front of your potential buyer. This could combine print, online, social media, direct database contact, direct local buyer contact and signage. Chances are it may cost some money but it is like a form of insurance to help give you a better chance of getting a great result - simply put, the more people that see your property the more likely you are to find your buyer/buyers.

Chances are your buyers will do the bulk of their research from the comfort of their own home on their laptop or phone. If you don't offer an irresistible product or irresistible value they may not even set foot in your home to look as only their favourites will actually get visited. So stack the odds in your favour and play the percentages, do the little things needed to set your property above the rest and that magic result could still be out there!

Finally - once you've managed to find a buyer/buyers it is critical that you have engaged a salesperson that you feel confident will achieve the best possible result for you. We would suggest in this "even" market it is dangerous putting an eager buyer for your property in front of an average salesperson - it could cost you thousands. The difference between a good offer and a great one can be breathtaking, some times unbelievable. Make sure your salesperson has the skills, the support and the genuine commitment / work ethic to focus on getting you the best result for your situation.

Make Your Rental Property Top of The List

Even though we are experiencing a very busy rental market, with lots of people enquiring on our advertised properties, it is still very important to present your property at its absolute best!

This starts with the photographs. Ensure the property is free of clutter, with the lawns and gardens nice and tidy. The photographs need to showcase the best parts of the property, particularly living rooms and kitchens as well as bathrooms, and of course outdoor living.

When choosing photos to display online, making sure they are the right dimension makes a huge difference. On Trademe, landscape photos sit better than portrait images and they need to be nice and clear.

If you can, employ a professional photographer. At Morris and Co we want to make our clients' properties stand out from the competition and great photos make this happen. We employ a professional photographer to capture all of our new listings, and the response is fantastic.

It is also important to provide enough photos to attract peoples' interest and provide some informative text about the property, outlining not only the features but the benefits. If you have lived in the property yourself, what did you like most about living there? Make sure you pass that on.

To find out more tips on marketing your rental to its full potential, feel free to give me a call.

Katrina Green
Property Management
E katrina.green@raywhite.com



Ray White Morris & Co Real Estate Ltd

Level 1 Conway Building, 188 High Street, Rangiora
T 03 310 6010 E rangiora.nz@raywhite.com rwrangiora.co.nz

PRE WINTER MUST HAVES

Bashers - the hardware store for all seasons. You can shop where the builders shop.

The Best Vegetables for Containers

Set up your vege boxes, and plant your easy care winter gardens. A breeze to keep weed free and no bending when harvesting your home grown crops.

Red beet, silver beet, cabbages, cauliflowers, garlic, carrots, kale, herbs and then after harvest, you can plant your summer herds and salad plants. Simply change the soil and live of the deck.



Mother's Day Special
Herb pots and stand ideal for Mothers' Day



Autumn Leaves
Clear up your lawns and pathways



Plastic Trellis
5 metre coils. Great for climbing plants or as a temporary boundary fence to keep pets safe.



Terra Lana Wool Insulation
Don't spend winter in a poorly insulated home.

Come and talk to us at Bashers ITM for a quote on batts and installation.

We do all the organising for you, all you need to do is enjoy the warmth afterwards!



BASHERS

82 Carters Road, Amberley
Ph 03 314 8311
sales@bashersitm.co.nz

F.D.A.N.Z
Gulliver & Tyler Ltd
FUNERAL DIRECTORS

Rangiora Office NEW PREMISES

Serving North Canterbury Since 1890
24 hr Assistance - we are here to guide you in your time of need.

A Family Business with Local Funeral Directors

Rangiora Office 37 Blackett Street, Rangiora Ph (03) 313 8222
Kaiapoi Office 55 Charles Street, Kaiapoi Ph (03) 327 7249
Flaxton Park 135 Youngs Road, Flaxton Ph (03) 310 7460

www.gulliver-tyler.co.nz
info@gulliver-tyler.co.nz

 Wendi Keown Dip.FD, Reg.FD (FOANZ) JP Funeral Director	 Bernie Power Funeral Director	 Jon Rinckes Embalmers Flaxton Park Administrator
 Paul Mayes Funeral Director	 Olwynne Cade Funeral Director	 Dave Chambers Funeral Director



words: **Pattie Pegler** photos: **Dorothy - essence**



Op Shop Chic

On the kitchen table in Jess Ormsby's seaside cottage, there is a small wicker tray holding a neatly placed row of sunglasses. Beachy, tidy and with a touch of style – it's a sign of things to come in this Waikuku home.

White walls and grey toned wooden floorboards add to the beachy feel and propping open the living room door is a large glass jar brimming with seashells of all shapes, sizes and patterns. In the living/dining area a couple of comfy chairs, a couch, and a cute wooden dining table with seating for four keep it cosy whilst windows and French doors let the light pour in. Muted tones dominate – browns and taupes with splashes of colour – 70s style orange light shades hang from the ceiling, a teal cushion pops. Tucked in the corner a Scandi style black upright chair is punctuated with a mustard cushion. On the sideboard smooth, round ceramics jostle together in greys and browns. There is plenty to draw the eye here but it's subtle and simple. And that's no accident.

School teacher Jess has lived in the cottage for nearly 4 years and during that time she has embraced the seaside location, truly putting her own style into it.

"I really like the mid-century modern look from the 50s and 60s. But I do love minimalism too, so I like things to be very simple," says Jess. This combines with her love of earthy tones and natural fibres – woods, wickers, coppers, ceramics, plants and shells all bring touches of nature inside. The added benefit of natural materials, says Jess, is that they don't date in the same way as manmade. She manages to combine all these in her home, with stylish touches like the yellow glass jug and bowls on the coffee table and the copper dish sitting behind the ceramic pots on the sideboard.

Jess' passion for interior design and styling dates right back to her childhood when she used to spend hours moving her room around and creating little scenes and collections of trinkets and objects. But a certain flair for art and style runs in the family, her sister has a Master in Fine Arts and a 'very stylish nana' inspired her as did an auntie who ran her own second hand shop and would take Jess looking for treasures around the weekend flea markets of Auckland.

This family heritage has given her not only an intuitive eye for interior styling

"This is home styling done on a budget, Jess rarely spends more than a couple of bucks"

but also for op shop bargains. A dedicated second-hand shopper Jess gets a real thrill from finding treasures and knows how to pick well. A large copper bowl with a chunky wooden button in the middle is both unique and functional. "It looks great with something in it, fruit or something. And it looks great just as a piece on its own," says Jess. An elegant looking mannequin head made of black plastic with flaking gold lips was picked up at the Salvation Army shop in Westport and is an all-time favourite. Whilst one of her most memorable finds is a 'tooth stool' from well-known designer Philippe Starck.

This is home styling done on a budget, Jess rarely spends more than a 'couple of bucks' at the op shops and the benefits are many. You can work on a small budget, you can find some amazing things for a great price and then when you want to refresh the look, or if you simply change your mind – you can take the pieces back and someone else will come along and love them. And she is firm about one piece of advice for others looking for second hand treasures. "Never, ever leave something behind. If you're going to get something for a couple of dollars, then get it, trust your instinct. It's such a little cost". She still remembers her regret the time she passed on a trio of china flying fish. They were only 50 cents but one of them had a chip on a fin and she decided she didn't really need them. She went back the next morning but they'd already been snapped up by someone else.

This approach to shopping sounds like a recipe for clutter but Jess is also a 'ruthless' declutterer. She regularly declutters and restyles her home, rearranging collections and changing things up. She draws inspiration from home and architecture magazines but also uses her own instinct. She advises setting up a room on a sunny day so you can see where the light falls, it makes a big difference. And she has a keen eye for creating little scenes, art on the wall picks up complimentary tones from nearby objects. A shelf of ornaments 'doesn't work' because they are all too similar in height and size she says.

And this careful eye, the regular re-styling, the attention to detail and the carefully curated whole create a beautiful space but they also make a home. "It's the best feeling," says Jess, "a mixture of peace, calm, happiness. I don't want to leave, I just want to be at home".

Friends and family also love the laid back vibe of the beach house whether it's sitting in the morning sun watching the estuary or enjoying bubbles on the back porch.

"Oh my God, it's like I'm stepping into a magazine or something" said Jess's mother when she first came to visit. How did that make Jess feel?

"Great" she replies unequivocally. "This is my thing. I do it for fun and it makes me happy to see others enjoy it".





**same place
same people
same service!**

GUTHRIEBOWRON.CO.NZ

Paint | Wallpaper | Flooring | Curtains | Blinds | Advice

10 High St (Showroom) 03 313 0403 | 320 High St (Paint) 03 313 5518

TRUSTED SINCE 1896

Drop, stop and shop!

Be inspired to create at our ReSale Store.

Revamp the look of your interior for less.

Southbrook Resource Recovery Park
294 Haxton Road, Southbrook
Kiosk: 03 313 5495
ReSale Store: 03 313 5798

Opening hours:
Mon-Sun 8.30am - 4.30pm

For more information go to:
waimakariri.govt.nz



BELLS THE AUCTIONEERS

We hold regular antique and specialist auctions in our purpose built auction rooms.



R.G. BELL & CO.
THE AUCTIONEERS

38 Charles St, Kalapoi, Ph (03) 327 8875
www.bellsauctions.co.nz

WE FIND IT'S THE CREATIVE OR GROUNDED PERSON WHO BUYS VINTAGE

#KEEPITREAL
#RECYCLE

TRADING LOUNGE

86 Carters Rd, Amberley



18 MONTHS INTEREST FREE
Terms & Conditions apply



03 310 8578 | WWW.FLOORINGCONNECTION.CO.NZ | 10 HIGH ST, RANGIORA

Window Furnishing Packages

by Feather and Oak Interiors

At Feather & Oak Interiors we are passionate about helping clients select the best treatments for their windows. Let us help you complete your home with customised curtains and blinds manufactured on-site by our very own team of skilled seamstresses. After all, dressing windows is what we love to do!

We have combined the vast experience of our team, the knowledge of our showroom staff and our extensive collection of sampling into uniquely tailored packages for your home. Visit us in store to explore the all the options or get in touch for a complimentary measure and quote.

Bespoke & Sustainable Window packages are also available.

see our full range of window packages in-store & online



"Hang Curtains. They Complete a Room. Think of Them as the Mascara of Decorating."

KATY HUSBAND
Founder of Feather and Oak

Window 150

-  Up to 150sqm home
-  Roller blinds and venetian blinds
-  Custom-made, fully lined curtains to the Living Room & Master Bedroom
-  Installation

packages start from **\$3,999**

Window 185

-  Up to 185sqm home
-  Roller blinds and venetian blinds
-  Custom-made, fully lined curtains to the Living Room & Master Bedroom
-  Installation

packages start from **\$4,999**

Window 200

-  Up to 200sqm home
-  Roller blinds - sunscreen and black-out options
-  Custom-made, fully lined curtains in Living and Bedroom areas
-  Options for Sheer curtains and a double-track system
-  Installation

packages start from **\$6,999**

Window 200+

-  Up to 250sqm home
-  Roller blinds - sunscreen and black-out options
-  Custom-made, fully lined curtains in Living and Bedroom areas
-  Options for Sheer curtains and a double-track system
-  Installation

packages start from **\$8,999**

Get in touch to book your Complimentary Measure & Quote

now online
Feather and Oak Interiors
Your next home shopping destination

featherandoak.co.nz

FEATHER & OAK
interiors

P. 03 313 0123
E. info@featherandoak.co.nz
166 High Street Rangiora

LASH KANDY

Lands in Rangiora

Eyelash professionals Lash Kandy land in Rangiora this month with a new salon on High Street offering high quality eyelash extensions. Lash Kandy founder Keren Clayton is well established in Oxford and now looks forward to expanding her services within North Canterbury.

Both women and men from all walks of life love eyelash extensions for many reasons, says Keren. Some want to look great without having to apply make-up, while others want to create more volume due to thinning eyelashes. A lot of people simply want to look extra special on important occasions such as weddings, proms and celebrations. In fact, the idea for Lash Kandy was down to Keren having her own eyelashes done for a special occasion. "It made me feel really good about myself," she says, "But it was really hard to find someone who could do them. I asked around a lot of people before I eventually found someone through my makeup artist.



So I decided to undertake training, and open Lash Kandy."

Visitors to Lash Kandy will receive absolutely top quality service from one of the country's most

highly trained lash technicians. Keren has invested heavily in training over the years, attending courses in New Zealand, Australia, and one-on-one training in the UK with the founder of Eyelash Excellence. She has even been invited to become an internationally recognised Eyelash Excellence Trainer, a role that will see her teaching other technicians the trade.

The cosmetic eyelash industry has few regulations in New Zealand, however Lash Kandy clients can rest assured they are in the safest hands. Keren is not only highly trained, but also works to the highest standards and best practices within the industry.

"I am offering a premium service," says Keren, "I want people to come in, feel special and leave with amazing lashes."



30% off LASHES
Code: Essence30
valid until end of May. T&Cs apply

LASH KANDY

PREMIUM EYELASH STUDIO

Grand Opening Thursday 23rd May

Come along between 4pm - 7pm learn about eyelash extensions and enjoy some cake!

Receive an exclusive goodie bag when you book an appointment on the day.

PLUS GREAT PRIZES TO BE WON!

Ph 021 655 308 | 135 High St, Rangiora
(located upstairs behind Joes Garage)
www.lashkandy.co.nz

Reusable containers welcome

Bring in your own container to fill with produce and receive a **10% discount**

We are working to eliminate all waste in our shop.

84 High Street Rangiora Ph 03 313 71 91
thebutchersmistress@gmail.com



Local Interior Designer Award Finalist

Local designer Andrea Robertson of Andrea Robertson Design is delighted to have been placed as a finalist in the 33rd Dulux Colour Awards. Andrea entered the awards in the category for Commercial and Multi-Residential Exterior based on her work on Rangiora's RSA building.

The RSA project involved a full refurbishment and extension and the exterior colours and materials needed to be both modern and timeless and, most importantly, welcoming to the community. To achieve this Andrea used Dulux Wairakei on the Dulux plaster system, pre cast concrete panels, with the powder coated steel panels in Dulux Duralloy Sandstone Grey and Dulux Duralloy Windsor Grey on the tower and on the carpark screens. She felt this was complimented by the addition of timber soffits and posts for warmth and texture in this neutral scheme.

For the courtyard desert mural Andrea selected various shades of grey to help evoke a moody and emotive feel with a modern twist. Meanwhile the soldier mural to the front of the building was painted in

Dulux Franz Josef Half, which Andrea feels adds a touch of colour whilst also being strong enough to give a balanced presence to the other strong materials used alongside it. The colour scheme has been completed with the addition of the red RSA logo and as a fundraising measure, a red poppy wall to the entry giving the space an eye-catching splash of colour.

"It was an absolute pleasure and honour to be involved in the refurbishment of the RSA" says Andrea.

The winners will be announced later this month at an awards ceremony in Melbourne.

ard
andrea robertson design

P O Box 581, Rangiora
Ph (03) 313 3035

www.andrearebertsondesign.co.nz



Enjoy our revamped stylish facilities and we welcome back our new caterers, Bev and Steve to the restaurant.

82 Victoria St, Rangiora
Ph 03-313 7123
rangiorarsa@gmail.com
www.rangiorarsa.nz

Welcome to the new look Rangiora RSA...

Join now, our club membership is only \$25 per year!





H! G
HI GORGEOUS

84 High Street Rangiora Ph 03 313 71 91
thebutchersmistress@gmail.com

Great Hair doesn't happen by chance, it happens by Appointment

Ph 313 6552 | www.higorgeous.co.nz
67 Percival Street, Lilybrook Centre, Rangiora

 **oxipay**

SHOP THE LOOK

Autumn is in the air and there's plenty of fresh ideas for interiors, accessories and beautiful fashion.

Exciting colours, shapes and textures, that will enliven your home and brighten your wardrobe - visit our North Canterbury stockists and businesses for clever ideas and great shopping

Village Green Antiques & Giftware



African Busts



Beaten brass bowl



Marrakesh ornate mirror



Goldstein Limited Edition Figurines



Plateau Trays



Moroccan Style Luciana Lanterns

Gift wrapping available

Open Mon-Fri 9.30am-5.30pm, Sat 10am-4pm
Ph 03 261 2222 or 021 585 872

Shop 3, Conway Lane, 176 High Street, Rangiora
antiques@orcon.net.nz www.villagegreenantiques.co.nz



Organic & Vegan Koko Body Products from \$24.99

Country Kitchen Skincare from \$29.99



Handcrafted Natural Panna Soaps \$7



Cashmere Poncho \$159 and Silk Scarf \$87



Franco Duckegg Jugs from \$45

Artist Sketchbook Mugs \$22.50

Open Mon - Fri 10am - 5pm, Sat 10am - 3pm
2 Durham Street, Rangiora, Ph (03) 310 6062
Located opposite Columbus Coffee

Shopping for Mother's Day



Good Dirt Flowers

Waikuku School Collective
1429 Main North Rd, Waikuku

Blackwells

Raine & Humble Table Runner \$49.90
Britt's Knits Hat \$24.90
Roy Kirkham & Co Bone China Mug \$29.90

Ph (03) 327 8029

Williams Street Kaiaoi | www.blackwellsdeptstore.co.nz



Rangiora Flower Shop

Delivered flowers from \$40 to Waimakariri, Christchurch and Hurunui
Ph (03) 313 6231
www.rangiorashop.co.nz



Propaganda Clothing

Federation Trackies \$119.90
Federation Flame Coat \$299.90
Quay High Key Sunglasses \$89
Ph (03) 313 1383
www.propagandaclothingnz.co.nz

Shopping for Mother's Day

Rangiora Showcase Jewellers



Spend \$250 on Stow Jewellery and receive a beautiful Stow Jewellery Box.
Charms available in store.
Ph (03) 313 7510
www.showcasejewellers.co.nz

Pukeko Junction Cafe



Pukeko Junction Cafe & Deli is a popular, buzzing, award winning destination cafe - warm and inviting, with serious coffee.
Ph (03) 314 8834
458 Ashworths Rd, Leithfield

Oakwood Road

Keep your loved one toasty warm with a Sherpa Knee Rug. For the gardener in all of us (wall plaque). Gorgeous leather handbags from \$129
Ph (03) 312 7260
Oakwood Road located at Woodend Nurseries

Gather and You

Lavender Lover Gift box: \$89.50
New Mama Gift box: \$70.00
Beauty Bliss Gift box: \$119.00
Ph 027 823 2925
91 Ivory Street Rangiora
www.gatherandyou.co.nz

Hair Handlers

All mothers appreciate a good hair day.
Free bag with Kerastase Gift Pack \$114
GHD Original Professional Styler \$230
Ph (03) 313 6949
www.hairhandlers.co.nz

Out of the bleu

SOME accessories and Mor Marshmallow Collection
Ph (03) 313 261 511
outofthebleuamberley



Quilters Quarters

Elna 664 Pro Overlocker
Husqvarna Sapphire 965Q Sewing Machine
Liberty Fabric selection
Ph (03) 313 6765
www.quiltersquarters.co.nz

Easy Mother's Day Brunch

Below is a simple delicious brunch recipe to serve up for Mum this Mother's Day. All the ingredients are available in store at New World Rangiora.



INGREDIENTS

- 200grams cold smoked salmon
- 1 box of Pams Finest Potato Gratin with Emmental and Cream
- 1 x avocado
- 200 grams crème fraiche
- 1 teaspoon horseradish sauce
- 2 tablespoons chopped parsley
- 2 tablespoons finely chopped dill
- Zest of 1/2 lemon and 1 tablespoon juice.

METHOD

- Pre-heat the oven to 220°C and place four Pam's Finest Potato Gratin with Emmental & Cream on baking paper and cook 15-20 minutes.
- While the Gratin is cooking slice the avocado and lemon into wedges and put aside.
- To make the dressing, mix 200grams of Crème Fraiche with 1 teaspoon grated Horseradish, 2 Tablespoons chopped Parsley, 2 Tablespoons finely chopped Dill and the zest of 1/2 lemon and 1 Tablespoon juice. Chill in the fridge.
- When the Gratin is cooked plate up with the Salmon and Avocado. Put a good dollop of Dressing on the side and garnish with the lemon wedges, a sprig of Parsley and season with salt and pepper. Makes 4 servings.

Serve with Mum's favourite glass of bubbles, she will be so impressed.



Barbara Palmer has worked at New World Rangiora for the past 15 years, the last 4 1/2 as their New World brand Ambassador during which time she has created many striking recipes.



Good Street Rangiora Ph: 03 311 8130
Opening Hours 8am - 9pm, seven days a week



The Office Cafe
open 7 days



Yoga Studio
p. 027 223 9982
Wed to Sun
10am - 4pm



Flowers and Botanical gifts
p. 021 915 225
Wed to Sun
10am - 4pm



Room six
Lifestyle-art-design
p. 027 666 0032
Wed to Sun
10am - 4pm



LOUIS WHO?
Boutique Clothing
p. 021 804 425
Wed to Sun
10am - 4pm



TWINE
Collectables
p. 027 274 7689
Wed to Fri
9am - 4pm
Sat & Sun
10am - 4pm



WovenVeranda
Furniture
p. 021 968 361
Wed to Sun
10am - 4pm

Celebrate Mothers' Day AT THE



North Canterbury's newest retail and lifestyle destination.

1429 Main North Rd, Waikuku



Helping you find joy through creativity

When Erica Willoughby and her sister-in-law, Alta Brits opened the doors to Willoughbys, they had two objectives: (1) to be the best retailer of yarn and craft supplies in North Canterbury and (2) to help people discover the joy of crafting and creativity.

Erica and Alta are self-confessed 'craft evangelists' and have spent most of their lives learning the art of knitting, crocheting, weaving, and sewing—skills that were passed down by the women in their families. "When we went through tough times in our lives, we found ourselves turning to these creative skills to find solace. There was something so joyful and peaceful about creating something for ourselves or the people we love," said Erica. "Creativity, in whatever shape or form, is self-empowering and healing, this is something we want to share with others. It brings people together."

Inspired by their personal experiences and a shared vision, the two women teamed up to bring their idea for a craft shop and creative space to life. After taking over The Wool Shop from Bev Brain in March

2019, the women set out to breathe new life into the business. They rebranded and renovated the shop interior with a fresh look and feel, brought in high-quality yarn from international suppliers, became the exclusive Crucci stockists in Rangiora and Singer Sewing Machine Agents.



"We want to provide the best shopping experience for our customers," said Alta. "Most importantly, we want them to walk into Willoughbys and feel truly inspired to bring their own creative projects to life and of course, to become a part of our creative community."

Erica and Alta have exciting plans for the store which will soon be offering a range of workshops and classes for craft lovers and the craft-curious.

WILLOUGHBYS
CREATE INSPIRE

123 High Street, Rangiora
Ph 03 313 6062
www.willoughbys.nz



OPEN LATE (until 7pm)
Monday 6 May - Friday 10 May
Pop in for a tour!



"We are really excited about our new premises and welcoming customers"

DAVID AMBROSIUS - Director

New Vision FOR RANGIORA EYECARE

Rangiora Eyecare are set to take eye care in North Canterbury to a whole new level with their brand new 400-square-metre premises on the corner of High Street.

"It's awesome, awesome, awesome," says practice manager, Tracey Snook, when asked about the new building. The facility is purpose built, she explains, so the rooms are designed for ease of access and the consulting and examination rooms are interconnecting. The waiting area is comfortable and soothing with warm, exposed timbers, carpeting and even a coffee corner for customers.

The new premises have been a while in the making, the build took several months but prior to that the concept designs took a good couple of years. The building is highly insulated with eco-friendly LED lighting and of such a high structural standard that it meets 110% of the building code. The team have been really looking forward to opening the doors and welcoming customers to their new look.

"One thing we always wanted was to have a Waimak theme," says Director David Ambrosius. "And we wanted to bring the outside in." This is clearly reflected in the design scheme - greys and blues mirror the colours of the Waimakariri river

and river stones, an eye-catching painting at end of the corridor depicts the river itself with bold and bright colours. Whilst plants and a calming water feature bring the region's natural elements inside. It's soothing, interesting and very firmly North Canterbury.

With five optometrists, five dispensers, a dedicated lab technician and support staff they are set to continue providing the exceptional level of customer service they are known for locally. Customers can be tested and fitted for glasses while they wait; have existing glasses repaired; frames adjusted or even just pick up a pair of sunglasses from the 500 or so pairs on display.

However the team also offers some highly specialised services - from diabetic retinal screening to eye testing for the Civil Aviation Authority and NZ Police. They can treat eye infections, assess injuries and diagnose and prescribe glaucoma medication. Once a month they have an eye surgeon who can assess the need for things such as cataract surgery.

With new premises, new equipment and a whole new interior look - visitors to the new Rangiora Eyecare centre are set for a treat. But one thing won't be changing - the superb customer service offered by the team.

Basic frame + lens packages from \$68

Elite frame + lens packages from \$299
includes progressive lenses

1 year warranty on lenses + 2 year warranty on frames

Opening Specials

RANGIORA | KAIAPOI EYECARE
OPTOMETRISTS - EST 1978

OPEN LATE (until 7 pm) Monday 6 May - Friday 10 May
P. 03 313 8811 | 42 High Street, Rangiora | www.rangioraeyecare.co.nz



COCOON BEAUTY & DAY SPA

Bestow Beauty: Functional food for inner health and outer beauty.
Created in NZ. Vegan, Gluten free, dairy free, soy free, refined sugar free



160 High Street, Rangiora | Phone: 03 313 5552 | www.cocoonbeautyanddayspa.co.nz

Thank You

to our clients

The staff at Rangiora Eyecare always go the extra mile to keep their customers happy. And their customers are loyal. It's a two way thing.

"We are really excited about our new premises and welcoming our customers to it. But we also want to say a big thank you to all those wonderful loyal customers who have stuck with us through the build process whilst we've been in our temporary space on Alfred Street. We really appreciate their support and we hope they'll be as happy as we are when they visit us in the new premises".

DAVID AMBROSIUS, Rangiora Eyecare Director.



DAVID AMBROSIUS
Director, Frame & Lens Specialist



SALLY HICKS
Director, Optometrist



GAVIN LAM
Director, Optometrist



KIMBERLEY SHEA
Director, Optometrist



Maui Jim got its start in 1980 as a small company selling sunglasses on Ka'anapali beach in Lahaina, Maui. Seeing a need in the market for technology that could combat intense glare and harmful UV while bringing the brilliant colours of the island to life we engineered the revolutionary PolarizedPlus2® lens.

What began as our Classic Collection of seven styles, has evolved into over 125 styles of sunglasses, all of which are polarised and protect from 100% of UVA and UVB rays.

Our home office is located in Lahaina, Maui, and we still design and test all of our sunglasses there.

WHAT'S UNIQUE ABOUT MAUI JIM?

- All Maui Jims feature proprietary Maui Jim PolarisedPlus2® lens technology. Boosting colours, heightening contrast and improving depth perception.
- Maui Jim lens technology uses three, rare earth elements (Neodymium, Erbium and Praseodymium) in our lenses to provide unmatched colour, clarity and detail.
- Maui Jim has over 400 SKU's with over 95% of the models available in proprietary Maui Jim Prescription.
- Maui Jim lenses are available in 4 materials (SuperThin (ST) Glass, Maui Pure, Maui Evolution and Maui Brilliant) and 4 lens colours (Neutral grey, HCL Bronze, Maui Rose, Maui HT) with the recent addition to three fashion lens tints (Blue Hawaii, MAUI Green and Maui Sunrise).
- Maui Jim has extended its passion for eyewear into the recent launch of its 'Optical Collection' taking inspiration from the Hawaiian Islands and incorporating it into a unique collection of beautifully crafted frames and lenses.



STYLE: CASTLES

The view's better from here.
PolarizedPlus2® Sunglasses



MOREL 1880

The story of Morel begins in 1880: it is, above all, one of a passionate family who has imagined and created glasses, spanning four generations.

Through smart design, innovation, and high standards, Morel eyeglasses are deeply rooted in a bespoke design language. More than just a name, Morel has a backstory, a craftsmanship know-how, values, and the ambition of becoming France's best renowned eyewear manufacturer around the world.

Under the Brand of Morel there are three collections available at Rangiora Eyecare

Nomad - With the Nomad collection, Morel explores the four corners of the earth looking for ideas, colors and inspiration. The bold frames in this collection fearlessly combine smart design with playful style.

Lightec - Always on the lookout for the latest innovations, Morel delights in surprises, designing glasses that are astonishing and comfortable with cutting-edge designs. This spirit is particularly apparent in its Lightec collection: pure concentrated technology!

1880 - The 1880 collection redesigns and modernizes iconic Morel models. Both stylish and elegant, these glasses have all the qualities of an authentic eyewear manufacturer's frame: quality materials, exquisite detail and sophisticated workmanship.



State of the Art Equipment

It's not just the premises that are bringing a whole new eye care experience to Rangiora. Rangiora Eyecare have also invested in some highly advanced, state-of-the-art equipment to ensure comprehensive eye testing and early diagnosis.

The ultrawide confocal scanner allows optometrists to capture three times as much of the retina during eye tests, whereas standard equipment typically allowed them to see around 45 degrees of the eye, this scanner shows them up to 150 degrees of the eye. That's impressive - but what does it mean for patients? A couple of key things according to optometrist Gavin Lam.

"This really is the latest, innovative technology and it means we can see more of the eye and it even lets us see through cataracts. This means we can pick up things like retinal tears, diabetic retinopathy, anything really, much earlier. And the earlier the diagnosis the more we can do to preserve and maintain people's vision," says Gavin, "But it also means we can look at your eyes without having to put in drops to dilate the pupil as much as before." So customers will not have to put up with the blurred vision of eye drops and will be able to drive directly after their eye exam.

The ultrawide confocal scanner together with digital fundus camera will also allow optometrists to image naevi and then subsequently use the technology to monitor their development. These are pigments, freckles and tiny moles that can occur at the back of the eye - just like you can get on your skin. And like those marks on your skin, a very small percentage of them can develop into a type of melanoma, so they need to be monitored.

Another piece of innovative technology, the ocular coherence tomographer (OCT) can scan through layers of the retina allowing earlier diagnosis of wet and dry macula degeneration and glaucoma. Typically, glaucoma sufferers will have lost up to 50% of their peripheral vision by the time they are symptomatic. Once the sight is lost it cannot be restored so early diagnosis is crucial in minimising that loss of vision.

"The OCT is a more specialised piece of equipment that we will recommend if we have found something that needs further investigation," explains optometrist Kimberley Shea, "We commonly use this machine to help diagnose macula degeneration, glaucoma, macula holes and to find reasons for unexplained reduced vision." The OCT allows the team to diagnose certain eye conditions which reduces the number of patients they need to refer to the hospital for further investigation.



TRACEY SNOOK
Practice Manager



JODY MIKAERE
Technician



CORRINE CHRISTIAN
Optometrist

ÓGA - Inspired by architecture, ÓGA caters to confident men who appreciate design. The ÓGA man is modern and looking for frames with a difference.

etnia O BARCELONA

The Etnia Barcelona brand was created in 2001 with the idea of being the most creative and colourful brand in the international optical industry, creating unique eyewear whose value lies in the design of its colors.

The brand's spirit reflected a world which embraced all cultures, all races and all colours in existence and reflected the variety of people and personalities from all over the globe.

Etnia Barcelona is available at over 11,000 retail points and continues to embody more than ever a creative brand identity based on eyewear design created using distinctive colours that invoke the unique personality of an accessory conceived to express a way of being and a way of life.



Visual Art



FACE AND CIE

Face and Cie, is perhaps the most innovative concept to hit the frame market in years. Made in France, Face and Cie, appeals to ladies who like to accessorise. Who like to change their appearance, on arguably the most noticeable fashion accessory you can wear. A pair of spectacle frames.

Face and Cie frames come with a front clip on that can not only change the colour of your frame but also the shape and texture. There are well over 200 looks to choose from. And it doesn't cost a fortune either. All the front clips retail for less than \$100. Accordingly it becomes easy to match your outfits and your lifestyle.

With Face and Cie, you do not need to wear the same frame until next you have an eye test, often for 2 years. For less than \$100 you can change your look as often as you want to.

Christchurch artist and designer Joel Hart has been creating an eye-catching mural for the exterior of the new Rangiora Eyecare building. At 5 metres high and 15 metres long the mural is a large-scale representation of Joel's original design of three colourful heads wearing glasses that has appeared on Rangiora Eyecare bags and eye cloths. With bright and vibrant colours in Joel's unique style, which he describes as 'urban contemporary with a bit of pop art' - the mural is set to become an iconic outdoor art work for the town.

A large-scale work of this type requires a different approach to smaller pieces says Joel. "There's a lot of prep work. I mask it all up then there is stencil and grid stuff to break it all down into smaller chunks. I use spray paint and some wall paint and different techniques." However, the biggest challenge remains the weather which can make outdoor painting very tricky. He estimates the mural itself will take around two weeks to complete depending on whether Canterbury's autumnal weather plays ball.

Art has not been neglected inside the building either, with a stunning painting from Rangiora based artist Clare Wilcox to take centre stage at the end of a long, open corridor. Clare portrays rural landscapes and addresses themes of water sources and how we use it. She was delighted when commissioned to produce a piece for Rangiora Eyecare's new premises.

The piece stands 1.8m high by 1.2m wide and depicts the Waimakariri River and surrounds in vibrant and bold colours. "It's a very North Canterbury based piece" she confirms, "the river flowing through the land with a lens looking over it". A resin coating gives the finish a glass like appearance and depth of colour she says.



Artist: Clare Wilcox



FACE A FACE
PARIS



LITTLE PAUL AND JOE

Little Paul and Joe, from France is an easy going collection without any ostentation. Little Paul and Joe, appeals to the lady or child that needs something a little smaller but wants something stylish with a little colour. The collection epitomises everything that makes French eyewear some of the most desirable in the world. Subtle curves, soft colours, and fitting characteristics that reflect the excellent quality found in Little Paul and Joe. Quite simply you will not know you're wearing them until someone compliments you on your specs.

If you're petite and struggling to find something that fits properly, something that not only looks good but helps make you feel good about yourself, well quite possibly Little Paul and Joe is the brand for you.



ANDY SPEECHLY
Receptionist



ANN HENDERSON
Receptionist



KAREN NORRIS
Receptionist



Nano Vista frames combine style with exceptional toughness making them perfect for active play, sports and everything in between. These durable frames are designed to take a beating day after day. No more breakages!

- But tough doesn't mean heavy and these frames are 35% lighter than typical acetate frames
- Removable temples mean Nano Vista frames can be adapted to wear with a headband
- New patented hinge, the exclusive 52 hinge is made to last
- Unique thermo adjustable material makes them CHILDPROOF
- Adjustable mini strap included for a tight fit
- The 0-4 age group range is ergonomically designed and has been adapted especially for littlies.
- It is BPA free with non-toxic material and it is hypoallergenic.
- 2 year warranty plus more

Looking after

your child's vision

Here in New Zealand, as in much of the world, there appears to have been an increase of short-sightedness (otherwise known as myopia) in recent years and it's affecting children as much as adults. It has been linked to spending more time on close work - particularly computer games or smart phones and tablets, usage of which is soaring. So what can you do about it?

The risk of progressing myopia can be reduced says optometrist Kimberley Shea of Rangiora Eyecare. "Special glasses, myopia-control contact lenses and/or eyedrops can all slow the progression of myopia. And spending at least 90 minutes a day outdoors can also help".

Limiting screen time is also beneficial as it is not only linked to increasing myopia, but can also cause dry eyes, disrupt sleep patterns, and increase the risk of eye damage and diseases in adulthood - similar to UV damage. While there are no guidelines developed around how long a child should spend on a screen yet, it is advised that children and adults should avoid screen time 3 hours before bedtime. The screen should also be dimmer than the ambient room light, so you can either reduce the brightness of your screen or increase the light in the room. Another sensible precaution is to take regular breaks when looking at a screen. Try the 20-20-20 rule suggests optometrist Kimberley Shea. "Take a break every 20 minutes, look at a non-digital object at least 20 feet away and focus on that object for 20 seconds to reduce visual fatigue."

Changes in vision can be very gradual which make it difficult for children to detect. Therefore Rangiora Eyecare recommend all children getting their eyes tested regularly, even when they don't have symptoms.



CHARMANT

PERFECT COMFORT

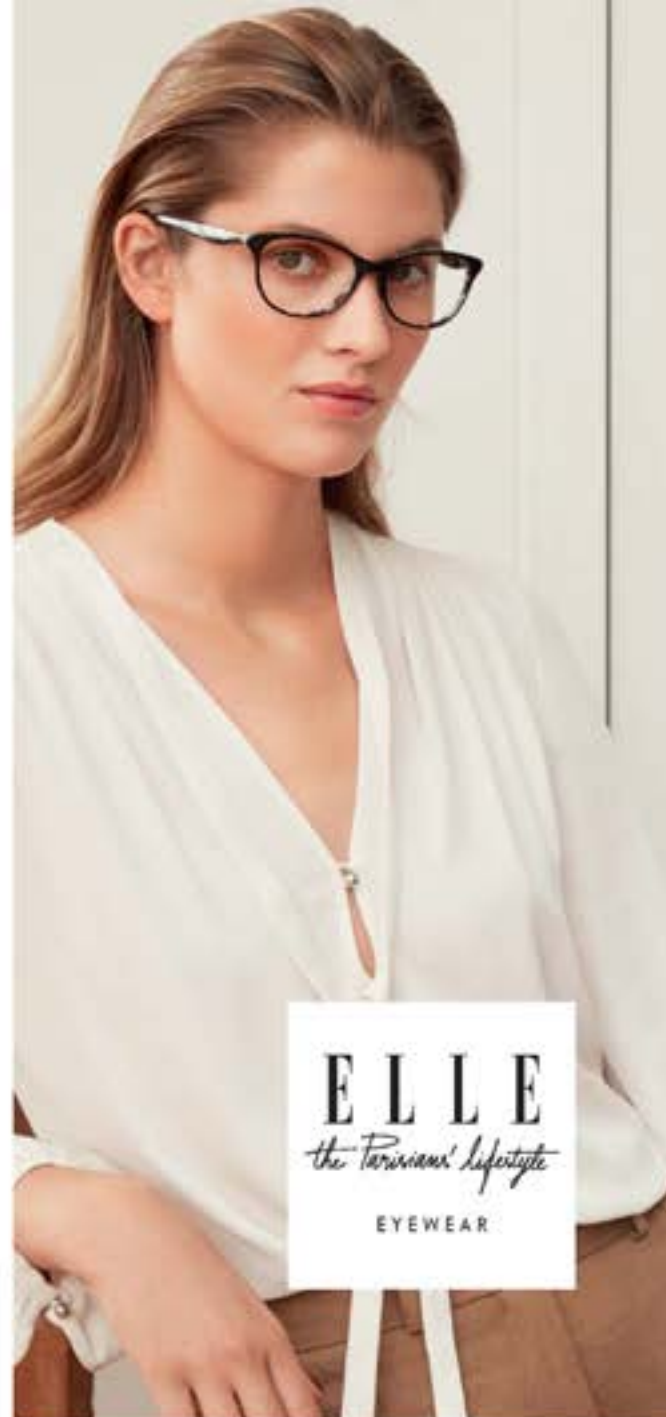
CHARMANT Titanium Perfection embodies the pinnacle of top-quality eyewear. This premium brand features light and comfortable men's and women's frames made of the finest Titanium materials. Proven, distinguished and cultured, CHARMANT Titanium Perfection eyewear appeals to connoisseurs of quality and elegance. The high-tech, contemporary frames inspire long-lasting loyalty in wearers with its rare fusion of superb craftsmanship and comfort, with eye-catching, modern styling.

ESPRIT

ESPRIT is an international lifestyle brand depicting a relaxed attitude, strongly tied to the brand's roots of California in the late 60s. Its spirit and values represent the sunny Californian way of life: fun, friendship and love for life. This heritage, together with the latest fashion trends leads to the authentic, inspirational, and stylish products created with passion and attention to detail.

ELLE

ELLE magazine is the go-to reference in global fashion and trends. ELLE is a brand that doesn't take itself too seriously, enjoys making fashion accessible, and looks to enhance every aspect of women's daily lives. Designed for independent, young and open-minded women around the globe, the ELLE brand has been developed into a collection of fashionable eyewear products. As a dynamic Parisian brand, ELLE helps women express their personality by playing with fashion and embracing originality.



FACE A FACE

PARIS

French style and flair for design make Face a Face frames stand out from the crowd.

Designed in Paris and inspired by creator Pascal Jaulent, each collection takes inspiration from modern art, architecture and contemporary design. They play with size, shape, material and texture as well as a unique colour range to create truly beautiful frames that are about eternal style rather than fast fashion. It takes up to two years from initial concept to creation of Face a Face frames.

Attention to style goes along with attention to craftsmanship and these frames are handmade in Paris and Italy using premium acetates sourced from Italy and polished for one week to create a beautiful lustre.

The end result are frames that are fabulously, unmistakably French. Tres chic!



Choosing Your Glasses

With the new store comes additional space to display some 1500 frames. There are frames from Parisian designers Volte Face and Danish designers Bellinger. There are Italian frames that are made of pure titanium and weigh no more than 10 grams. There are fun fashion frames and classic designs. There are round frames, oval frames, rectangular frames, winged frames. They come in a riot of colours and patterns and each one looks a little bit different. Trends in frames currently include rose gold and darker colours according to staff. They even carry a variety of kids' frames - they're so robust you can bend the arms to 180 degrees. They don't limit themselves at Rangiora Eyecare, the range is all encompassing. And that's no coincidence.

"We hand pick, we're not buying over the internet and getting one of every colour," says David, "This is a piece of art on your face. And there really is something for everyone."

And the experienced team will make sure you choose the frames that are just right for you. They take into account the type of lenses you need and the thickness of them as well as things like face shape and what colour suits you and then make sure they fit absolutely right for you. They will also advise on different options for the lenses including things like anti-reflection coatings.

To find out more about the fantastic range of frames at Rangiora Eyecare pop in and visit the friendly team, or call for an appointment. PH: 03 313 8811

Seven Signs you need an eye test

Getting your eyes tested on a regular basis is sensible body maintenance and staff at Rangiora Eyecare recommend an eye test every couple of years as a matter of course, particularly if you have a family history of eye diseases such as glaucoma or macula degeneration. Here are some of the key signs that you should get booked in for an eye check.

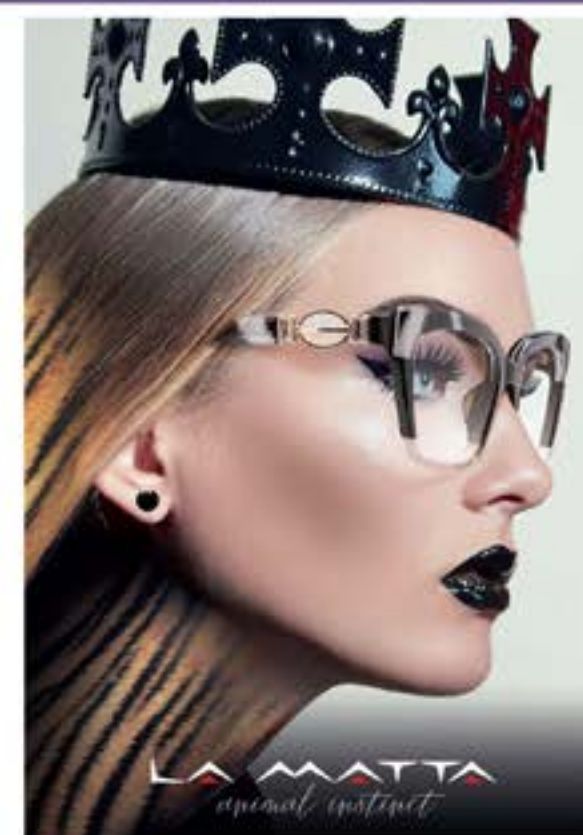
1. Your arms aren't long enough anymore and you're constantly holding things further and further away in order to read them. This is a common occurrence as we age and a sign that it maybe time for some glasses.
2. If eyes are constantly feeling tired or you notice they are red and sore
3. Blurred vision or double vision
4. We all have headaches now and again, but if you are experiencing them frequently they can be a sign that your vision is deteriorating and there is some resulting muscle strain.
5. Flashes of light or 'floaters' which often appear as tiny dots or flecks that seem to float around in your field of sight. These are often caused by age related changes of the eye.
6. Squinting
7. Eyes turning in or out - This can sometimes feel like the eye 'drifting'. However, it's also something that might be noticed by a friend or family member as each eye will be looking in a different direction.

So what do eye tests actually test for?

The typical idea of eye tests used to be reading letters in decreasing size, getting stuck on the middle line and then walking out with a prescription for glasses. But modern day eye tests are far more than just that. With their state-of-the-art equipment and highly trained professional team, Rangiora Eyecare make sure that their eye tests are a fully comprehensive eye health check. So what is actually involved?

- An assessment of your internal eye health, including retina, optic disc, and blood vessels
- A Slit-lamp assessment of your eye to screen for eye diseases such as eyelid lumps and bumps, dry eye, cataracts etc.
- An assessment of your colour perception as some general diseases affect colour vision
- Examination to assess glaucoma including a measure of the pressure in each eye
- An assessment of visual functions including any refractive error to determine whether correction is needed
- Tests of your eye muscles to check they move and coordinate properly
- Visual fields test to check the function of the optic nerve, retina and visual pathway in the brain which can be affected by Glaucoma, Strokes and other neurological conditions.
- An assessment of pupils' function and response
- Ultra-wide confocal scan of your retina to assess the structure, identify any abnormalities and eliminate any retinal diseases.

A comprehensive eye test is typically up to 45 minutes long and you can book yours with the friendly, professional team at Rangiora Eyecare. Call 03 313 8811 or pop in to their new premises 42 High Street, Rangiora.



prodesian : denmark



Bocca
by
FACE A FACE



CHERIE CARTER
Optical Assistant
Kalapoi



DEBBIE O'SULLIVAN
Dispensing Optician
Kalapoi



JILL PAINE
Receptionist
Kalapoi



LISA PAENGA
Optical Assistant



JUDE ADAMS
Dispensing Optician



AMANDA BANKS
Optical Assistant

LA MATTA

Interprets excess with style.

LA MATTA frames have bold and intriguing hues with lots of personality. Animal prints and colours are inspired by the wild and LA MATTA frames are an explosion of detail. Original decorative elements add a special touch to each style to express the personality and allure of modern women.



In this new century the fashion world is left with no precise signs or particular trends, not even colours are well defined, confusion abounds. This apparent lack of co ordinations seemingly left to chance, is actually a new form of freedom in interpreting & matching colours. This is exactly what inspired Kaos, never banal, ultra colourful, original & light hearted. For a fresh, irreverent look that is out of the ordinary.

An explosion of colour and detail. The designer shape, unexpected patterns and bold colours give life to an impeccable mix of the most recent edition in the Kaos collection, a metamorphosis of discovery of the different shades of black.

The tangible, aggressive and provocative character of Kaos collection is tinged with black an absolute fashion colour protagonist.

Kaos creates an alphabet that mixes shapes, details and colour contracts transforming this eyewear accessory into a tool that can be used to express the many facets of your personality.



prodesign : denmark

ProDesign has a contemporary, Scandinavian approach to design. With a focus on simplicity, functionality and celebrating vivid colours – every model is designed to perfection.

ProDesign frames will complement your personal style with maximum comfort. ProDesign's mission is to create innovative eyewear design by rethinking form and function. They are eyewear architects!

RANGIORA | KAIAPOI EYECARE
OPTOMETRISTS - EST 1978

OPENING SPECIAL

Progressive Lenses & Titanium Frame

includes eye test & wide angle retinal scan

\$395

42 High St Rangiora PH: 03 313 8811

Valid 6 May-6 June 2019. T&C's apply. Present this voucher.

INTRODUCING YOUR LOCAL CREATIVE STUDIO SPECIALISING IN

- + GRAPHIC DESIGN
- + WEB DESIGN
- + PRINT
- + MARKETING STRATEGIES
- + PROMOTIONAL PRODUCTS
- + PHOTOGRAPHY

WE LOVE GETTING TO KNOW YOU AND YOUR BUSINESS

LAURA GOOD
// DIRECTOR

WE WORK TO SEE YOU SUCCEED... AFTER ALL YOUR SUCCESS IS OUR SUCCESS

LISA WILSON
// STUDIO MANAGER

A TEAM OF PASSIONATE CREATIVITIES, MARKETERS AND DIGITAL EXPERTS.

READY TO PARTNER WITH YOUR NEXT MISSION!

CAITLIN TINDALL
// GRAPHIC DESIGNER

KIMBERLEY TONKIN
// WEB DESIGNER

TOGETHER, WE WILL IMPROVE YOUR BRAND'S PERFORMANCE ...LETS TELL YOUR STORY.



studio.rangiora@printing.com
29 high street rangiora | 03 313 7774
createdesignstudio.co.nz



Lurex Jumper \$179

Necklace Single Tassel \$39 ▶

Blouse Twilight Blue \$139

Cord Trousers \$139

Flower \$30

Cobalt Jumper \$169 ▲

Silk Scarf \$79 ▲

Red Skirt \$169 ▶

www.soyouboutique.co.nz
Shop 3, Conway Lane, 176 High Street, Rangiora.
Ph 03 313 1720
Open Mon - Fri 9am - 5.30pm & Sat 10am - 4pm

Ruby six

Come and see our great selection of gorgeous leather boots and cosy slippers

rubysix.co.nz | 6 Markham Street, Amberley
Ph 03 314 8847 | Open Mon - Fri 9-5.30 Sat & Sun 10-5

Beauty & You

Founder of Repechage Lydia Sarfati discovered the renewing and healing powers of sea water and seaweed. Based on her research she pioneered the use of sustainably-harvested seaweed to benefit skin all around the world. Through her work, Sarfati found that seaweed contained a high concentration of powerful ingredients, including 12 vitamins and minerals, 42 trace elements, and 18 amino acids to help skin look hydrated, restored, renewed and radiant.

Repechage offers a multitude of luxurious seaweed based facials, face and body products to pamper and restore the look of the skin, helping it to appear smooth, soft and renewed.

Beauty & You in Amberley are the only stockists in New Zealand for Repechage. Pop in and see the team to find out what Repechage can do for your skin.

A great gift for Mother's Day!

There's Nothing a Four Layer Facial[™] Can't Fix!

Treat yourself...or someone special with our luxurious Four Layer Facial, followed with a Lifting Rejuvenating Opti firm Eye Treatment.

All for only \$149

This offer is available for May only

oxipay available for treatments and products

PHONE: 03 314 7692 | www.beautyandyou.co.nz
Shop 16 Brackenfields, Carters Rd, Amberley

COUNTRY LANE

OBI
SILLS
CABLE
ELK
POL
NYNE
ZHRILL
SUPERGA
NOANOA
NEW LONDON
KATHRYN
WILSON
LANIA
BLAK
VERGE

140 HIGH STREET RANGIORA
www.countrylanefashions.co.nz

molto bella
ITALIAN DESIGNER CLOTHING

BEAUTIFUL CLOTHING & STORE

An eclectic mix of fabulous one-off pieces, architectural elements and natural fibre homewares sourced from around the world.

199 High Street, Rangiora | Ph 03 313 1366 or 027 531 4151
www.moltobella.nz

the Sport shop

345 Flaxton Road, Rangiora
Ph 03 313 7983
www.thesportshop.co.nz

UNDER ARMOUR | asics | icebreaker | SKINS | new balance

Autumn Special

From Now Till Easter
40% off these two styles
Foil
Pure Merino

CNR. WILLIAMS STREET & RAVEN QUAY
Open 7 days
phone: 03 327 8029
website: www.blackwellsdeptstore.co.nz

Blackwell's
DEPARTMENT STORE KAIAPOI
TRUSTED SINCE 1871

NOW IN STORE

Trinity
\$219.90

Riassare
Good shoes take you places

shoelines RANGIORA
162 HIGH STREET, RANGIORA
PH 313 8444 • OPEN SAT 10AM - 4PM
www.rangiorashoelines.co.nz

Great Hair doesn't happen by chance, it happens by Appointment

H! G
www.higorgeous.co.nz
67 Percival Street, Lilybrook Centre, Rangiora

oxipay

AUTUMN DAYS

The new season is here, which means it's time for layering your favourite fashion pieces and a beauty update. Here's our top autumn picks from your local beauty specialists



1 KEUNE SILVER SAVIOR

Saves your blonde locks, neutralising unwanted warm tones and nourishing with Provitamin B5. Our FREE gift Absolute Volume Thermal Protector saves hair from thermal and heat styling!

Chrome Boutique Ph (03) 423 3148
172 High Street, Conway Lane, Rangiora

NATURAL PERFUME 2

Treat yourself or someone special to the 100% natural, bliss inducing scents of IME Natural Perfume. Inspired by the nine muses of Greek Mythology, IME has a range of Oriental, Floral, Woody and Fresh fragrances to invigorate and inspire.

I'Adore Natural - 2 Durham Street, Rangiora
www.facebook.com/iadorenatural



3 A HEALTHY EXFOLIATING ENZYME

Exfoliating Enzyme gently removes dead skin cells and promotes cell renewal, leaving your skin feeling soft and smooth

Bombshell Beauty Ph (03) 310 7878
77 High Street Rangiora
www.bombshellbeauty.co.nz



words: Kayte John

All the Beige

In a season that is usually dominated by bright and bold colours on and off the runway, it may come as a surprise to find that the latest must-have shade is a little more of a fail-safe option. We're talking beige, and with it come an array of neutral colours that have formed the head-to-toe neutral trend. This trend is not only easy to apply to our winter wardrobes, it's also gives a sense of style with minimal effort. For those of you, who feel beige may be boring, fear not as the trend calls for various shades of cream, beige, grey, caramel, ivory and stone, blended in a variety of fabrics and textures. There's something rich and luxurious you get from throwing hues of toffee to vanilla and caramel together that oozes effortless chic. Neutral colours can also be paired with anything, becoming an essential item for your wardrobe. The key to keeping this look appealing is to mix it up with different textures and shades, or experimenting with patterns such as snake skin and leopard print. Metallic colours are also considered fashion neutrals - so don't be afraid to throw on gold, silver and copper tones to add a sense of luxe to your look. Adding gold accessories can also make an appealing addition to your head-to-toe neutral attire.



Rangiora Eyecare

Country Lane

Ruby Six

Rangiora Shoelines

American Beers

America may not be leading the way with international diplomacy, but when it comes to hoppy beers they are definitely showing the rest of the world how it's done.

A couple of weeks ago I attended the Hapi 2019 Symposium and Beer Festival in Wellington. Generously organised by Garage Project (one of NZ's leading craft breweries), it was a great event bringing together hop farmers, researchers and brewers from all over New Zealand and the USA. All independent breweries in NZ were invited to send a delegate to the symposium; omitting the multinationals and their various "craft" labels like Panhead, Emersons, Tuatara, Harringtons, Macs and Monteiths; showing that Garage Project are about as keen on the beer industry giants as I am! The speakers included brewers from the United States and Britain, NZ hop growers and researchers and a Wellington chef. For me, and I think for most of the other brewers present, the most interesting part was hearing how brewers are managing hops and especially dry hop additions. Really interesting stuff and lots of notes were taken. The metric to US measurement scale meant that a lot of it wasn't very clear at the time, but back at the hotel with a calculator, all was revealed.

Hop growers in American particularly in Washington State are producing hops that give us wonderful flavours and aromatics. American Pale Ales and IPAs now have their own classes at beer awards all over the world. Here at the Brew Moon we make an



'Audrey' - a single-hop APA from the Brew Moon Brewing Company



The Wolf of Washington is the Brew Moon's flagship APA

American Pale Ale that we call "The Wolf of Washington". The name was inspired by the fact that Washington is where most of the hops are grown and that wolves are being reintroduced back in to Washington State, it has nothing to do with that predator currently in charge in Washington DC! We've tried to make a malt base that is light but still has plenty of mouthfeel. This beer isn't particularly bitter, but it is hoppy. Most of the hops, (all imported from the USA) are added either very late to the kettle or direct to the beer soon after fermentation, a technique known as dry hopping. This gives the beer loads of aromatics but limits the bittering effect of the hops.

Pale Ales and IPAs use a lot of hops, some of the American brewers at the symposium are using more than 15 grams per litre just as "dry" hops in these styles. That's a lot of hops! Because all hops are different, we make some of our hoppy beers as single hop brews which highlights the different characters that each hop brings. At the moment we've got a Pale Ale made solely with Mosaic hops on tap in our bar, it's so gorgeous and classy and as it uses American hops, we've called it Audrey, named after the classiest, most gorgeous American ever!

www.brewmoon.co.nz
Ph (03) 314 8036
sales@brewmoon.co.nz



INDIAN HUT

Indian Hut is an unique Indian restaurant with a mission to quench your taste buds from a variety of our mouth watering vibrant curries.
Open 6 days, Tuesday - Sunday
Lunch 11.30am - 2pm
Dinner 5pm - 9pm

INDIAN HUT RESTAURANT & TAKEAWAYS
76 Main Street, Oxford
www.indianhut.co.nz
Ph (03) 423 3587



NOM NOM KITCHEN



Experience authentic South East Asian Cuisine in a cosy, fully licensed restaurant with impressive Asian style décor. With something on the menu to please everyone Nom Nom is a fantastic choice for your next family catch-up or special occasion - or just a great meal!
257 High Street, Rangiora 7400
Ph (03) 313 4276
www.nomnomkitchen.co.nz
NomNom Kitchen - Rangiora

ATAAHUA WINE

Fine hand crafted wine to be enjoyed with good food and great company.

ATAAHUA WINES
Ataahuawine.co.nz
Ph 021 222 2354



Core Pilates and Mind, a boutique pilates studio offering both reformer pilates, mat pilates, yoga and barre classes.

Give it a go! Try a FREE Information & Demonstration Session. Starting 4 & 5 May!

WHAT CAN I EXPECT? The info and demo sessions are designed to introduce you to the studio, the team, and the foundational principals of pilates.

You will also find out a little more about Core Pilates and how it can support your wellbeing journey.

You will be guided through some basic movements on the reformer. There will also have time to ask questions. These sessions are not to be missed, as they prepare you well for your first class!

Visit us on line to view time slots and to book (bookings essential)



Book your Trial!

THE ULTIMATE TRANSFORMATION
2 WEEK TRIAL

\$51.00
SAVE 50%!

WHATS INCLUDED IN MY 2 WEEKS?
Introductory session
3 Reformer Classes per week
Unlimited Mat Pilates Classes
Unlimited Yoga Classes
Unlimited Barre Classes



BOOK ONLINE TODAY
corepilatesandmind.com
Above Pet Plus, Northwood
SupaCentre, 1 Radcliffe Road

p: +6427 500 7095



The wait is finally over for North Canterbury's latest bar & restaurant recently opened overlooking Lake Pegasus. Positioned perfectly to capture all day sun and with views across the lake and the hills beyond, it is simply a stunning and unique setting that you will never want to leave.

Open seven days from 8.30am Monday - Sunday

62 Pegasus Main Street, Pegasus

For details or reservations, phone 03 967 6891 or visit thegoodhomepegasus.co.nz



CRAFT BAR & KITCHEN KAIAPOI

Family Friendly Restaurant with great fun service. We are the perfect place to meet & enjoy time with friends & family.

Home of 60 Craft Beers & Ciders AND
The Famous CBK Skillet Cookie

OPEN ALL
Public Holidays FREE
of any Surcharge.
Our GREAT DEALS
still on offer.

FREE room hire, GREAT for functions, ANY size ANY style, birthdays, engagement parties, work or family dinners, great set menus email
Hamish@cbkkaiapoi.co.nz

We will take care of everything!



*FREE DESSERT
With any meal over \$20

Any time Sunday to Thursday.
Expires 31st May 2019, please present this voucher to staff.

Not in conjunction with any other offers.
Normal CBK T's & C's Apply

CBK Craft Bar & Kitchen www.cbk.nz 4/77 Hilton Street Kaiapoi 7630 Phone 03 327 9224
Open 7 days a week, Monday to Friday from 11am to late. Weekends from 9am to late.

Need Space? Get Some Storage!

According to a survey carried out last year 67% of kiwis who use storage units keep furniture in them. Sports equipment and tools also came high on the list, whilst 2% of people said they didn't actually know what they had stored.

But whatever you're storing, there's no doubt that storage units are an invaluable option for freeing up space in the home, keeping household items during renovations or building or simply stashing that sports gear out of season. Sometimes you just need somewhere to put things and that's where Arlington Storage can help.

This newly built facility in Arlington offers brand new, purpose-built storage units in two sizes - 3 metres x 3 metres and 3 metres x 6 metres. To give you an idea of size, a 3 x 3 unit should store the furnishings and household items from a small 2-bedroom home if well packed. Whilst the larger 6 x 3 units are big enough to store a car. If you have a caravan or motorhome that you wish

"brand new, purpose-built storage units in two sizes"

to store the site also offers outdoor, dry parking for these vehicles.

The units are brand new, clean, lockable and have excellent security in place with alarms and security cameras on site and gated access. Whilst this will keep possessions safe it also, crucially, means that you can insure the items you are storing. After all, if items are worth packing away into storage you also probably want to insure them too.

So if you're squeezed for space, call Arlington Storage today. They offer competitive pricing, secure and safe storage with secure access seven days a week from 7am to 9.30pm.

Contact Geoff: 027 222 8612
Email: arlingtonstorage@gmail.com



ARLINGTON STORAGE

- Brand New
- Purpose Built
- Two Sizes
- Security Cameras
- Gated Access
- Long or Short term leases
- Competitive Pricing

21 Huntington Drive
Geoff 027 222 8612 | Lindsay 027 438 9630
arlingtonstorage@gmail.com

David Boyce

Manager at Perpetual Guardian



Boots 'n All: Seven Rules for Rural Trustees - Part 2

What is special about the role of the person we call a 'rural trustee'? It all sheets back to New Zealand's primary industry-based economy and the disproportionate - by global comparative standards - amount of wealth that sits in farms and other agriculture-based businesses, which are often family-owned enterprises that have grown larger and more complex over generations. It is estimated more than 50% of rural properties in New Zealand are owned by trusts.

Against this backdrop, rural trustees should be operating in accordance with a handful of fairly simple yet ironclad rules. Here are two more rules:

3. Have a sound awareness of the (ever-changing) legislative and regulatory requirements. Get the governance right. The diversity of businesses run on rural properties and the legislative requirements in trust law means the trustee needs a clear game plan to ensure the productive and compliant running of the rural business and sound trust governance.

The rural trustee must be familiar with a variety of laws pertaining to trust-owned rural land or businesses, including the Trustee Act 1956, the prudent person rule, the Health & Safety at Work Act 2015, the Resource Management Act, the Employment Relations Act 2000 (and the subsequent amendments), contract law, the Anti-Money Laundering and Countering Financing of Terrorism Act 2009, the Foreign Account Tax Compliance Act, and the Common Reporting Standard, to name a few.

4. Hold other trustees and interested parties to account. One of the pieces of

legislation the rural trustee is responsible for is Health & Safety at Work Act 2015, and the obligations on any site or property held by the trust. New Zealand has an alarmingly high rate of workplace accidents, injuries and deaths, and nearly two in five work-related deaths are attributable to the agriculture industry. A trustee's dominant thinking needs to be: "What can I evidence that I have done to understand and enhance the hazard identification of the workplace environment for employees or third parties working on property owned by the trust, to make it a safe working environment for all users?"

The trustee must apply this thinking in practice without fear or favour, first, because it's the right thing to do, and second, because the penalties under this legislation for getting it wrong are both substantial and personal. There is neither a firewall, nor the ability for a trustee to indemnify or insure themselves. Trustees stand personally exposed should legislative or regulatory obligations not be met - and ignorance of the law is not a defence.

When was the last time you reviewed the Governance of your Trust?

All trustees should be aware of the changes they will surely face when the new Trust Act is introduced and perhaps now is the time to ensure they have the basics in hand. Perpetual Guardian offers a comprehensive trust management service to existing trustees, and provides professional advice in area of trust formation and management.



0800 87 87 82 perpetualguardian.co.nz



Manala
Yoga & Wellbeing

"Unwind and Relax" workshops encourage you to pause, deeply rest and rejuvenate. **Upcoming workshops May 12 + June 9.** No experience necessary.

Weekly yoga classes and Craniosacral Therapy also available.

www.manalawellbeing.co.nz
Ph.027 461 2000



BURBIDGE AUTOMOTIVE
Rangiora

WOF-SERVICE
FULL MECHANICAL REPAIRS
TYRES
COURTESY CAR AVAILABLE

325 Flaxton Road, Rangiora
Call Peter or Nikki on 03 313 3344
office@burbidgeautomotive.co.nz

Farmlands



Margo Hutcheon
RESULTS WITH INTEGRITY

Setting for over 20 years

PEOPLE PROPERTY PERFORMANCE

BAYLEYS

Margo Hutcheon ARENZ
M 027 485 8003 P 03 311 8020
E margo.hutcheon@bayleys.co.nz

Matt Doocey

Essence of the Electorate with Matt Doocey MP for Waimakariri



The number of signatures is rapidly growing for the petition for an after-hours medical-care facility for Waimakariri based at the Rangiora Health Hub.

Waimakariri is one of the fastest-growing areas in the country and our growth is expected to continue. We have increasing numbers of young families moving into our area and we have a growing population of seniors who are choosing to make their home in Waimakariri. It makes sense to many of us that we would be eligible for after-hours health provision closer to where we live.

Like others, I had been disappointed to hear that the trigger for locating an after-hours health service was based on drive times to the existing 24-Hour Surgery in Christchurch, rather than taking into account our population growth. I believe that, with our large population growth, Waimakariri is deserving of its own after-hours health provision.

As local MP, I see my role as fighting for infrastructure solutions to match our growth and I'm proud to be supporting

Sandi McLean as she petitions the Canterbury District Health Board (CDHB) for an after-hours facility at the health hub. You can sign the electronic petition at www.mattdoocey.national.org.nz and Sandi and I have also launched the petition at our local libraries for those who are not able to access the petition online. Many of our older residents have welcomed this option.

At the health meeting I held previously, bringing the CDHB to Rangiora to hear our residents' concerns, they made a commitment to an expansion of after-hours services for Waimakariri, looking at a pilot, nurse-led, after-hours service operating from the health hub. From this meeting, they went forward to work with our health-care community to look at what a pilot model would look like.

I have asked the CDHB to come back for another public meeting to update our community on the next steps and Sandi's petition is very timely. It's important that we keep the pressure on and I encourage everyone to sign the petition.



Funded by the Parliamentary Service and authorised by Matt Doocey MP, 188 High Street, Rangiora.

The mine field that's ACC with Hank van Keulen

Over the last three editions I've gone into the realms of ACC and some of the misgivings of the scheme. Many of you may now have very little, if any, faith in the system. But, for all it's failures, it is probably one of the best systems for accident compensation of any country in the western world. It does work most of the time when we have an injury or disability due to an unforeseen accident.

But what if it's NOT an accident? And who decides if it is indeed an accident?

I can tell you that ACC over the years have got a lot tougher on what they'll accept as their liability. Why? We all know and, in some cases, have had personal experiences with people who have claimed ACC compensation they were, and never had been, entitled to. Believe it or not, there are some dishonest people around. And, for not the first time, they have, to a degree, ruined it for us more honest folk. They are the reason why at times we feel like criminals making an honest and legitimate claim.

What happens if ACC turn you down on a claim? Well, it's now up to you to prove how and why your injury should be recognised by ACC. Not them to prove why not. And, if after all that we still can't get a claim, what happens then? What if we can't work for a considerable period of time? How do we pay the bills?

Private income protection is available to most of us. To many it may be considered expensive. However, you do need to give consideration as to what you're protecting. I'll give you an example...

By law, you're entitled to 5 sick days a year, accumulated for 2 years, i.e. 10 days, if you don't take any sick leave in the first year. So that means that you may only have a maximum of 10 working days available. Yes, some employers are more generous, but even then, it's unlikely to be an awful lot more than your legal entitlement.

Let's say you earn \$80,000 on a salary or wages and you're only entitled to what the law allows for sick leave (5 days). How about I offer you a job earning \$78,000 with a sick leave entitlement of 5 years? ...I can do that. And, you don't even need to change jobs. On \$80,000, \$2,000 is only 2.5% of your total annual income!

In many cases, if not most, it will actually cost less than that. It will only pay up to a maximum of 75% of your income, but, that's still a lot more than the sickness benefit which is all you'll get once your sick leave entitlement runs out.



Income protection insurances takes many different forms. The cost is very different for different people. It is dependent on such things as age, occupation, health, even our leisure activities can have an impact.

Differing types of income protection are available depending on our circumstances such as how we get paid, what our debt load is, even what our budget is! It is very complex but doesn't need to be. It is certainly something every wage and salary earner should look at and consider, especially those who have dependants that rely on our income to pay the bills and put food on the table.

Because of the different forms of income protection that is available, I strongly urge you to take advice from a specialist who can advise you on what will work best for you, both at claim time and cost. Once again, we're happy to help here. It is what we do at PPNZL...

Contact Hank on 021 357 062 or email hank@ppnzl.co.nz




CAMEO
Fine Arts

Specialist custom picture framing & giftware

10 Cone Street, Rangiora
P: 03 313 5474
www.nz-souvenirs.co.nz



Readings with Holly

Clairvoyant / Medium
Reiki Master

With appointment times available throughout the week and on weekends!

Phone 03 314 9073

www.mistypathway.com



JAINES MONTHLY QUOTE
"Yoga, because some questions can't be answered by Google"

YOGA + PILATES + MASSAGE

FREE CLASS with this advert

Ph: 021 338 987
8 Tahuna St, Pegasus Town
activezenstudio



FOR ALL YOUR FLOORING NEEDS!

GRAHAM & SONS LTD

- Extensive Range of carpets
- Discounted Carpet & Vinyls
- Vinyl Planking Flooring
- Cork & Vinyl Tiles
- In-house Carpet & Vinyl Installers
- Friendly Family Business

333 High Street, Rangiora • Phone 03 313 8518 • www.grahamandsons.co.nz



Robertson Building
Canterbury Ltd

Local to North Canterbury
CALL ARTHUR 027 245 1601

arthur@robertsonbuilding.co.nz
www.robertsonbuilding.co.nz

BARNS/FARM BUILDING
RIB RAFT FLOOR SYSTEM INSTALLATION
PROJECT MANAGEMENT • ADDITIONS • NEW HOMES
HOME MAINTENANCE • EDC REPAIRS • ALTERATIONS

FREE QUOTES



TRAY WELLNESS

Tray Wellness is a holistic healthcare provider who uses science and wisdom to prevent, manage and treat your health conditions.

LEARN HOW YOUR DIET AND LIFESTYLE HABITS CAN IMPROVE THE QUALITY OF YOUR HEALTH

BOOK ONLINE AT www.traywellness.com



Where community shapes the heart of your retirement

For Katherine, it's all about people

The retirement village she chose had to be a place where the warm and welcoming community would provide the setting to establish lasting friendships. "You've got to have that interaction, the laughs, the sadness. Friends become both your family and your friend."

Katherine recalls the day she moved into the village, where her new neighbours came out to welcome her. There was a camaraderie in that they were all "newbies" settling into village life, all within a couple of weeks of each other.

"You'll hear a lot of laughter around the village."

She discovered that first friendly meeting with the new neighbours, well that's simply par for the course at the village. As time passed those friendships grew and she's now surrounded by a community that genuinely cares about each other.

"There's always someone around to lift your spirits, even the gardeners! They're just so friendly and part of your friendship group in a way," explains Katherine.

One of Katherine's talents is that she's a good listener, "it's always good to have a ready ear!" Whether it's catching up for a cup of tea or going to the movies together, that connection is so important.



Katherine enjoys the variety of people she meets, the different professions, age groups and backgrounds. It makes for very interesting discussions and some great laughs. "You'll hear a lot of laughter around the village," Katherine chuckles.

Katherine's advice is, "you've got to make sure you can continue your friendship support, because people need people!"



Explore our village community today, phone Wendy or Chris on 310 8644