

# essence

essentially...north canterbury



10

Business Profile

It's all about the  
Brand

13

Feature

Hidden Gems  
North Canterbury

# SHOP THE LOOK

Love Shopping? Our region has some superb stores, offering all sorts of unique items to generate interest and conversation. From standout trinkets to staple pieces, rugs, lamps, cushions, vases and artwork! You name it, it can be found somewhere near you.

**New Season Vendula London Bags**

**I Adore Natural Homeware & Gifts**

Vintage Pinocchio

New Sculptures

Locally crafted Soaps

Wrendale Designs!!

Reusable Food Covers

Home & Garden Books

Beatrix Potter Pot Hangers are back in stock!

Open Mon - Fri 10am - 5pm, Sat 10am - 3pm  
2 Durham Street, Rangiora, Ph (03) 310 6062  
Located opposite Columbus Coffee  
[www.iadore.co.nz](http://www.iadore.co.nz)

**Handzon**  
sew - knit - embroider - quilt - crochet

your happy place

**MICKEY, ELSA, BUZZ, SIMBA AND ARIEL**

**ON YOUR SHIRT, SHOES, WALLS!**

**ASK US HOW!**

1 Alfred Street, Rangiora  
03 423 3544  
[www.handzon.co.nz](http://www.handzon.co.nz)

**Jewellery by Antler**

**Earrings by Minty E**

**Beautiful Jugs and Artificial Flowers**

**Cushions by Stoneleigh & Robertson**

**Woven Shoulder Bag**

**Glass Vase**

**Handbag by Sassyduck**

**Hat by Fedpink**

**Hinako Mink Leather Boots**

**Lantern Cove Candle range**

**Trench Coat by Staple**

**Top and skirt from Antler**

**Thea's BOUTIQUE**

Thea's Boutique | 55a Main Street. Oxford  
Ph: +64 03 242 0490

## contents

Well Dorothy has thrown her hands in the air and said she can't write anything. So, I've hopped in to help out.

I think we've all got a dose of the winter blues at Essence - and I don't think we're the only ones. Apparently, Canterbury has had the wettest July on record and the seemingly endless rain of this month has left us all with muddy gardens, muddy shoes and a general desire to hibernate.

But as the sun pops out, we're reminded that spring isn't far away and there is so much to look forward to in our wonderful district. This month we take a look at some of the upcoming events locally - from the Christmas Fete to the Soroptimists Fair. We also took a little mooch around North Canterbury and bring you some of the highlights, places to pop for a coffee, or do a little shopping.

Also, this month our writer Michelle delves into the interesting history of the Rangiora Tennis Club - apparently

started by a man with one arm. The tennis club is a testament to all those community members who get together and make positive things happen. The tennis club recently had to sell its King Street premises but they are moving to a new site on Coldstream Road and will be holding an open day on 11th September, so don't despair if you are a keen tennis player. The club lives on!

We also got to meet some of the team at Brands Mowers this month, what an interesting history the business has had. Check it out on **pages 9 & 10**

And for the crafty amongst you have a go at Emily's guide to making your own cushions. And share a pic of your finished creation with us on social media - we'd love to see what some of you clever people can make!

But for now, grab a coffee, sit down and take time out to read about the wonderful, people and places in our region.

*Enjoy your month, Pattie Pegler (lifestyle writer)*

### contact us:

**Dorothy McLennan - Publisher**  
[dorothy@essencemagazine.co.nz](mailto:dorothy@essencemagazine.co.nz)

**Melanie Cox - Office Manager**  
[mel@essencemagazine.co.nz](mailto:mel@essencemagazine.co.nz)

**Mandy Buchan - Advertising Sales Consultant**  
[mandy@essencemagazine.co.nz](mailto:mandy@essencemagazine.co.nz)

**Johanna Dittmer - Graphic Designer**  
[johanna@essencemagazine.co.nz](mailto:johanna@essencemagazine.co.nz)

**Janet Scott - Advertising Sales Consultant**  
[janet@essencemagazine.co.nz](mailto:janet@essencemagazine.co.nz)

**211 King Street, Rangiora, North Canterbury.**  
Ph: 03 313 1811 | [www.essencemagazine.co.nz](http://www.essencemagazine.co.nz)

Essence is printed on FSC accredited paper.

Published by Impact Publicity 2005 Ltd  
Opinions expressed in this issue are not necessarily those of Impact Publicity 2005 Ltd/Essence Magazine. No responsibility is accepted of unsolicited material. No material may be reproduced without the written permission of the publisher.

*May the road rise up to meet you. May the wind be always at your back. May the sun shine warm upon your face; the rains fall soft upon your fields and until we meet again, may God hold you in the palm of His hand.*

*'Irish Blessing'*

Rangiora office: 18 Albert Street, with off street parking

**HALL & CO.**  
FUNERAL DIRECTORS

DEATH IS BUT A HORIZON ... A HORIZON IS BUT THE LIMIT OF OUR SIGHT

Convenient Locations  
Christchurch 379 0178 | Rangiora 313 6948  
E: [office@undertaker.co.nz](mailto:office@undertaker.co.nz) | [www.undertaker.co.nz](http://www.undertaker.co.nz)

**SHOWCASE JEWELLERS**  
Your wedding ring specialist.

Hidden gems: Page 13

Ingredients: Page 08

The ball is in a new court: Page 16

Front Cover:  
On the road delivering mowers with Brand Mowers & Chainsaws - Husqvarna's Crown Dealer and one of the busiest sales and service centres in North Canterbury.  
Photography: **Brendan Holt; Display**

contents | essential

**Jewellery & Watch repairs**  
Valuations  
Watch Batteries

Cnr High & Victoria St, Rangiora  
Ph: 313 7510  
[rangiora@showcasejeweller.com](mailto:rangiora@showcasejeweller.com)  
[www.showcasejewellers.co.nz](http://www.showcasejewellers.co.nz)

**MASTER BUILDER**

**Robertson Building**  
CANTERBURY LTD

Local to North Canterbury  
**CALL ARTHUR 027 245 1601**

[arthur@robertsonbuilding.co.nz](mailto:arthur@robertsonbuilding.co.nz)  
[www.robertsonbuilding.co.nz](http://www.robertsonbuilding.co.nz)

BARNS/FARM BUILDING  
RIB RAFT FLOOR SYSTEM INSTALLATION  
PROJECT MANAGEMENT • ADDITIONS • NEW HOMES  
HOME MAINTENANCE • EQC REPAIRS • ALTERATIONS

**FREE QUOTES**

**Get the look with layers**

Elm Jordan Coat

Lothlorian Possum Merino Acc.

George Check Blazer

R.M. Williams Wilpena Creek Vest

Lothlorian Possum Glove

Black Caviar Ebony Handbag

Cabello Tan Shoe

Seeking Lola Magical Tier Dress

eLiasz and eLLa Bracelet

**Blackwell's**  
DEPARTMENT STORE KAIAPOI  
TRUSTED SINCE 1871  
Celebrating 150 Years

Cnr. Williams St & Raven Quay, Kaiapoi  
Open 7 Days  
Ph 03 327 8029  
[www.blackwellsdeptstore.co.nz](http://www.blackwellsdeptstore.co.nz)

**arthur-nellie**  
UPHOLSTERY & FURNITURE DESIGN

**Upholstery & Furniture Design**

We provide a full upholstery service specialising in all areas, producing a high quality standard. No job too big or small.

Kent McCreanor  
Cell 027 200 0031 | Ph/Fax (03) 312 0570  
[arthur.nellie@gmail.com](mailto:arthur.nellie@gmail.com)

**The Mill WAIKUPU**

Discover local and international art, giftware and more!

Frieda Kahlo

Turkish porcelain cats

Ceramic hare

Wooden whales

Cup/teapot

The Mill, 1473 Main North Rd, Waikuku | Open 7 days | Ph 03 312 7978 | Instagram/Facebook - The Mill Waikuku



## Fetes Fairs and Events

As the weather warms up the region's event calendar is back in full swing.

With wide, open space and stunning scenery, our rural region lends itself to fabulous outdoor events - from fetes to festivals to farmers markets - we're looking forward to welcoming them all back this year!



### Market in the Park

Elevate Market in the Park is returning for the second time this year! We simply had to replicate this gorgeous 'mega market' because it was so much fun and so well attended earlier in the year when the inaugural Market in the Park took place in Rangiora.

Save the date, Sunday 2nd of October and get ready for Christmas early whilst supporting local businesses. Elevate Market in the Park is a time to shop until you drop and bring the kids along for some fun Circus Workshops, Bouncy Castles, Live Busking Shows, Live Music and our beautiful Victoria Park!



### The Christmas Country Fete

New Zealand's biggest and most popular Fête, attracting people from every corner of New Zealand. With over 150 top-flight stalls you can treat yourself to a little designer happiness at the end of winter. Christmas shopping should be a breeze in this fabulous atmosphere.

Located in the stunning grounds of Amberley House, come along and take advantage of The Fête's original and individual creations provided by the stallholders and leave at the end of the day with purchases that you won't have seen anywhere else.

Savour the local food and wine while you enjoy the live entertainment at this iconic Fête, and take a tour round the fabulous Amberley House gardens before completing a great day out. The Fête is not to be missed; bring your friends and have a great day!



### Vintage Fair

Put Saturday 27 August in your calendar and find yourself a vintage treasure!

The North Canterbury Soroptimists are holding a Vintage Fair at John Knox Church Hall (Main Street) from 10am to 3pm.

The Hall will be full of all kinds of vintage goods - all generously donated - as well as refreshments.

We are delighted to be donating the proceeds to The Hope Community Trust who support teenage girls with severe anxiety.

We are hoping to raise enough money for The Hope Community Trust to run two eight-week courses. These courses aim to give these young women the tools to manage their anxiety.

Please help us to help our youth.



### G.H. MUMM Sparkles at the snow

Champagne house G.H. Mumm will toast the 75th anniversary of Coronet Peak in style with a series of dining events across August.

Starting with a Champagne Brunch at Heidi's Hut in Rocky Gully on August 18 - the ultimate après ski experience. From brunch to lunch August 19, a classic long lunch on the deck with tunes and entertainment in the form of a retro fashion parade.

On August 20 a final black-tie gala dinner will be held in partnership with G.H. Mumm at Coronet Peak to celebrate the history, mountain and community.

There is limited capacity available, so get in quick and book a ticket at one of the events.

To check out the full list of events, please visit: [www.coronetpeak.co.nz/75th](http://www.coronetpeak.co.nz/75th)

### Art on Display

The recent Corcoran French Kaiapoi Art Expo was a huge success, with more than 130 innovative Waimakariri artists, showcasing hundreds of artworks.

The committee would like to extend a huge thank you to the artists who played a part in the 2022 Expo. We would also like to thank our sponsors for making this year's event one of the best. We are looking forward to seeing you again for the 2023 Corcoran French Kaiapoi Art Expo.



### Midwinter Creativity

Riana and the team from Handzon enjoyed a week of Midwinter Christmas activities and classes which commenced with a Midwinter Christmas dinner at The Ivory Bar.



The Handzon team: Christine Powell, Jean Anderson, Zoe Barber. At the back is Riana Auret and Debbie Lucas

Stephanie Cameron, our guest teacher from Auckland, Sue Williams and Christine Goodwin



Christine McFarlane, Dianne Wallace and Carol Glover

Karen Neal and Anne Bonner



The three sisters: Marion Parlane, Lois Burrows and Janet Courtier

Christine Baker, Nikki Harrell and Gail Griffiths



"Jan was amazing, very detailed and thorough and helped us get a much better result than we had anticipated. Would recommend her as an agent to anyone selling their house!"  
- N Sully

Jan McCormick  
021 395 241 | 03 311 8020  
jan.mccormick@bayleys.co.nz

**BAYLEYS**

WHALAN AND PARTNERS LTD. Licensed under the REA ACT 2008

**SOROPTIMIST NORTH CANTERBURY**



## VINTAGE FAIR

2022

**SATURDAY 27 AUGUST**  
10AM - 3PM

**KNOX CHURCH HALL - RANGIORA**

**NZ'S MOST POPULAR COUNTRY FETE**

Thursday 27th October 9.30am-3.30pm

**AMBERLEY HOUSE**  
ENTRANCE: 258 AMBERLEY BEACH ROAD, AMBERLEY

There are over 150 stalls selling handmade, unique items perfect for yourself or Christmas gifts along with a great wine & food area.

Tickets on sale now: [www.thefete.co.nz](http://www.thefete.co.nz)



**RUNNING FOR LOCAL ELECTION?**



**We're here to help YOU WIN.**

**DL LEAFLETS**  
100GSM & 130GSM

SAVE 20%

SAVE 35%

**CORFLUTE A1 & A0**

\*Please note discounts apply to certain quantities

**create** YOUR ELECTION PARTNER

216 High Street, Rangiora  
studio.rangiora@printing.com  
03 313 7774

[createdesignstudio.co.nz](http://createdesignstudio.co.nz)

**Marion & Co. JEWELLERY**

# SALE

Up to 50% off end of line styles!  
\*while stock lasts



Was \$845 now \$422.50    Was \$485 now \$339.50    Was \$1,699 now \$849.50

146 High Street, Rangiora | [info@marionandcojewellery.com](mailto:info@marionandcojewellery.com)  
Monday-Friday: 10am-5pm, Saturday: 10am-4pm, Closed Sunday  
[www.marionandcojewellery.com](http://www.marionandcojewellery.com)

**elevate MARKET in the park**

**Sunday 2 October**  
10am-3pm

Victoria Park Rangiora

IDEAL EVENTS





Patricia  
Ara Pacific Advisory  
Group chair

# GET READY

for the digital world

Thrive in the world of computers, smart phones and the internet with Ara Connect. Whether you have no computing experience, or you'd like to get more, Ara Connect's friendly facilitators can help you build your skills and confidence locally and at your own pace. Start any time at an Ara Connect location near you (Rangiora, Papanui, City or Woolston).

Explore now at [ara.ac.nz](http://ara.ac.nz) | 0800 24 24 76

# The Fabric of Society

The Fabric of Society's great space is a showcase for their wide selection of fabric off the roll, Chalk Paint®, homewares and occasional furniture, both old and new. A meeting place for those seeking décor inspiration, their textile collection encompasses an eclectic mix of styles, colours and patterns in beautiful natural and man-made fibres to suit every home.



Weave Magnus throw



Satin paint in Graphite



Antique Bronze Beldi Vase



Wallpaint Carnaby Yellow



Beija Flor Leopard Placemat



Helena Mustard drapery fabric

Open Monday - Friday 10am - 5pm,  
Saturday 10am - 4pm  
15 Coronation Street, Rangiora  
Ph. 027 309 0060 | [www.thefabricofsociety.co.nz](http://www.thefabricofsociety.co.nz)



## Making a Cushion

I think the hardest part of making a cushion is selecting the fabrics, but once this is done the rest is a cinch! Here's how:

### You will need:

- Fabric - for front and back. This can be the same or different.
- Zip - I use an invisible zip, slightly smaller than the size of the cushion.
- Inner - Feather are great and always look good, but Dacron inners will work too.

### Step 1

- Cut out your fabric to the same size as your cushion inner. This way when the cover is sewn, it ends up being a bit smaller than the inner creating a nice fit.

### Step 2

- Inserting the zip! Not as hard as you think.
- Machine neaten the bottom edge (where the zip will go).
- Lay out your fabric right side up. Place the zipper right side down on the fabric. Pin. Now lay the other fabric out with right side up. Flip the side with the zip pinned to it over and onto of this piece. Line up and pin zip into place.

## Books we are loving!

The Fabric of Society have a large selection of fabulous books to give you inspiration and interior ideas.



Room Recipes for Style and Colour - Annie Sloan



With 300 inspirational photographs, this 192-page hardback book examines 9 key interior design styles, ranging from traditional Swedish to Warehouse. Every page is filled with practical tips and inspiration to help you develop your own style and bring it into your home.



Meet the creative women who are living life on their own terms in this stunning photographic survey of the most original homes and interiors.



A Room of Her Own - Robyn Lea

- Sew zip. A handy hint is to iron out the zip so it is as flat as you can make it. Don't worry it will roll back again, it just means you can get the seam as close to the teeth as possible.
- ### Step 3
- At this point the two sides of the cushion are joined only at the zip. You now need to "finish" off that edge by sewing from the zip stitching to the edge of the fabric.
  - I allow a 1cm seam allowance.
  - Once this is done, you're ready to sew the rest of the cushion up.
  - You don't need to pin, but it does help keep the fabric in place.
  - Hint - remember to open your zip half way or you'll be cussing when you sew up the rest of the cushion and have to work nimble fingers getting the zip undone in order to turn the cushion the right way around!
- ### Step 4
- Double check to make sure cushion is all sewn up correctly. Neaten the three remaining edges. Turn the right way round and iron.
  - Hint - sometimes the corners can be a bit bulky, so it is OK to snip these across to reduce bulk.
  - Insert the inner and VOILA!



## Ray White Morris & Co Annual Awards

The Ray White Morris & Co team recently came together to celebrate their end of year awards night acknowledging the standout performers and recognising the hard work that has been put in by the team over the last 12 months.

For owners Stuart and Claire Morris, having such a talented team is key to running a successful business. "Celebrating our team's achievements together is important for our overall culture" says Claire.

Morris & Co first opened its doors in Rangiora in 2015 and it wasn't long before an office in Pegasus opened, followed by Kaiapoi and then Papanui. The property management division, now based out of the Kaiapoi office, has increased exponentially under the guidance of Operations Manager, Katrina Green.

Claire says referrals and repeat business confirms that the customer satisfaction and support given to clients is working and the clear vision that they have towards customer needs is a priority.

**"Our team is internationally recognised for their customer service and it is at the forefront of what we do."**

A close relationship with Canterbury Rugby and sponsorship of local events such as the Kaiapoi Art Expo, Rangiora Promotions and supporting the local schools is a way that Morris & Co give back to the community and Claire says that it's a privilege to be in a position to be able to do this.

### Strong relationships

Taking out the Top Salesperson award, Justin Hartley of the Pegasus team believes that having local knowledge and developing a rapport with his community are the building blocks to being successful in the ever changing real estate industry. Justin also received the Customer Excellence award which proves that his approach to managing

clients is second to none. "I'm lucky enough to have an excellent team in the Pegasus office who keep everything ticking over and without their professionalism and expertise I wouldn't be in this position."

Co-owner Stuart, Top Auction Performer winner, has grown up in Rangiora and resides in Ashley with Claire and their two children, Eve and Harry. Stuart has been selling real estate in North Canterbury for 15 years and is a testament to the success of Morris & Co having also achieved Ray White Elite Status for the fourth consecutive year.

Claire says she is extremely proud of the team and what has been achieved over the past year is remarkable and industry leading. With COVID restrictions around auctions and open homes as well as an unprecedented demand in housing it's been a fascinating time to be in real estate. "Things are forever changing in this industry which keeps us on our toes and challenges us to be the best we can be. We are always looking to improve and are willing to put in the work to better serve our clients and community".



Claire and Stuart Morris, Business Owners

To get in touch with Ray White Morris & Co phone 03 310 6010, email [rw.morrisandco@raywhite.com](mailto:rw.morrisandco@raywhite.com) or visit them online at [raywhitemorrisandco.co.nz](http://raywhitemorrisandco.co.nz)



Property Management team - Tanaya Jeffcott, Kelly Crisp, Estelle Schuurman, Katrina Green and Cassidy Sprott



Team Morris - Susan Cosgrove, Stuart Morris and Daph O'Rourke



Papanui Team - Olivia Hendry, Maria Paterson, Tracy Thomson and Georgia Tuuta

## Morris & Co 2022 Awards

### Top Sales Performer

Justin Hartley

### Top Auction Performer

Stuart Morris

### Excellence in Customer Care

Justin Hartley

### Business Growth Excellence

Vanessa Golightly, Keta Ferrari

### Executive Recognition

Christine Watton, Keta Ferrari, Marijke Sheppard

### Rising Star

Olivia Stewart

### Administrator of the Year

Jo Columbus

### Excellence in Digital and Social Media

Tracy Thomson

### Top Property Manager

Tanaya Jeffcott

### Property Management Support Champion

Melanie Cook

### 5 Year Long Service Awards

Ben McNab, Victoria Norrie, Jenefer Bimler, Keta Ferrari, Christine Watton

### Ray White Status Awards

Premier: Tracy Thomson, Fiona McDonald  
Elite: Stuart Morris, Vanessa Golightly, Justin Hartley

Property Management Executive Recognition: Cassidy Sprott, Tanaya Jeffcott



Pegasus Team - Justin Hartley, Ange Hartley and Jordan Reid



Olivia and Jane Stewart



# COCOON

BEAUTY & DAY SPA












*We have moved!*

FIND US AT: 2/246 High Street, Rangiora | Phone: 03 313 5552 | [www.cocoonbeautyanddayspa.co.nz](http://www.cocoonbeautyanddayspa.co.nz)



## Your Garden this Month

Minette Tonoli is a herb enthusiast and horticulturist, a true Earth Mother, who gets excited about sharing her love for the plethora of food and medicinal plants she grows and uses at her home acre in Waikuku.

### Growing Salad Greens

There was a lettuce shortage. Fast-food outlets in June and July issued statements about leaving out greens from their meals because of widespread problems in getting lettuce. Weather bombs were blamed, as were challenges in supply chain logistics. Even in supermarkets the prices soared and bags of mixed lettuce leaves and heads of icebergs were left on the shelves.

I felt quite smug, however, as I harvested basket after basket of delightful greens during this time – even in the floods we had recently, and after that intense minus 5-degree frost! The bonus? About 95% of the leafy green goodness I picked for my salads and sandwiches were from self-seeded plants that “just came up” in my garden.

I can't predict what produce will be in short supply in the coming spring, but I can tell you that it needn't ever be leafy greens from your garden. Here's a few easy to grow, delicious salad greens that you can grow early in spring, and if you leave some plants to set seed as the season progresses, you'll continually have harvestable greens.



**Lettuce** - I prefer loose leaf lettuce or cut-and-come-again type lettuces such as Freckles, Drunken Woman Fringed Head, Rouge d' Hiver, Oak Leaf and Red Velvet.

**Spinach and Silverbeet** - Baby leaf English spinach and baby leaf silverbeet/chard or perpetual spinach, are easy to grow additions to a mixed leaf salad. Even beetroot leaves are good in salads.

**Mizuna & Mustards** - Mizuna has more feathery leaves and are less pungent than mustard greens, but both are wonderful for salads and sandwiches.

**Kale, Cabbage and Bok Choi** - Kale is an exceptionally nutritious green, cabbage is well known as a quick substitute for lettuce and salad (slaw), and the smaller leaved non heading cabbages such as bok choy and pak choi are popular in mixed salad bags.

**Chicories** - Endive, frisee, radicchio, and escarole all refer to leaves of the different types of bitter plants in the chicory family that are staples in Mediterranean cuisine.

**Sorrel** - French sorrel delivers a delightful fresh tangy flavour and beautiful red veined sorrel adds interest.

**Rocket and Cress** - with their characteristic hot peppery flavour, salad rocket, wild rocket, land cress and watercress are enjoyed in salads.

**Corn Salad and Miner's Lettuce** - These “cultivated weeds” have a long history of being foraged as a salad green and are much prized when few other fresh leaves grow in winter and early spring.

**Herbs** – add shungiku (chop-suey greens), chervil, par-cel, mitsuba (Japanese parsley), coriander, parsley, and salad burnet to salads for flavour and interest.

**Veggies** – early season vegetables such as pea shoots and tendrils as well as broad bean tips and side-leaves make brilliant greens for salads.

**Weeds** – You may not grow them on purpose, but might find swathes of chickweed, dandelion and plantain in your garden or lawn early spring – all perfectly edible and delicious as alternative greens.

**Sprouts and microgreens** – another idea is to have trays of microgreens growing on your benchtop or to sprout some seeds.



### The Taste

Not in the mood to cook? Then pop down to The Taste Asian Fusion House.

Originally called Little Yummy, this popular restaurant has the same owners and same talented chefs. Offering a mouth-watering range of Chinese, Thai and Malaysian inspired dishes, you can dine-in, takeaway or have something delicious delivered straight to your door.

03-313 3333 | 63 Percival Street, Rangiora (Lilybrook Shopping Centre)



### NOM NOM KITCHEN

Experience authentic South East Asian Cuisine in a cosy, fully licensed restaurant with impressive Asian style décor.

Enjoy this delicious warming Lamb Shank dish slow cooked in a Massaman curry paste and coconut – perfect for warming the soul.

257 High Street, Rangiora (03) 313 4276

### LITTLE VINTAGE ESPRESSO

Fabulous food, great coffee and amazing service!

Little Vintage Espresso Café  
20 Markham St, Amberley | 03-314 9580



### MONTEITH'S RANGIORA

From the Kiwi Classic fish n' chips, to gourmet burgers, stone baked pizzas and a delicious al-a-carte menu. Monteith's has something to suit every taste bud.

Featuring a wide range of Monteith's beer and cider as well as Heineken, Tuatara and Murphy's Stout on tap, Monteith's is the perfect spot to catch up with friends & family.

75 Victoria Street, Rangiora | 03-313 2929

### PERCIVAL STREET BAKERY

Rangiora's best kept secret!

Honest freshly made bakery goods including specialty breads. Be sure to pick up your daily coffee with easy parking options and the peaceful Victoria Park is just across the road.

Your favourite local bakery!

138 Percival Street, Rangiora | Ph: 03 310 6096 | Find us on: f i



## Karaage Chicken

We're all after saving some \$\$\$ when it comes to the grocery bill and here at New World Rangiora we have the answer, 5 Family Dinners for under \$100. In each planner you have a shopping list, 5 recipes to feed a family of four and some weekly tips to get the most out of your menu.

With this in mind my recipe of the month is our very popular Karaage Chicken Rice Bowl. This recipe is definitely one you'll be making again and again. The chicken is marinated in ginger, garlic and soy sauce and rolled in

cornflour before cooking and is so tender and full of flavour. The salad is crisp and crunchy with a hint of lemon and compliments the chicken and the rice. These are good serving sizes and your dinner guests will be very impressed. If there's any left eat it for lunch the next day. Make sure you check out our recipe stand for other meal ideas to get the most out of your weekly shop.

Essence columnist, Barb Palmer has been part of the friendly team at New World Rangiora for 19 years, the last 8 as their Brand Ambassador sharing recipes and ideas with customers.

#### Ingredients

- 300g medium grain brown rice

#### Karaage Chicken

- 400g skinless chicken breast, sliced
- 2 teaspoons soy sauce
- 2 garlic cloves, grated or minced or 1 teaspoon crushed garlic
- 10g (2cm chunk) ginger, grated or 1 teaspoon crushed ginger
- Pepper, to taste
- 6 tablespoons cornflour
- Oil, for frying

#### Zesty Slaw

- 254g shelled edamame beans, steamed
- 1/8 cabbage, thinly sliced
- 1 1/2 large beetroot, grated or cut into thin matchsticks
- 2 large carrots, cut into matchsticks or thinly sliced
- 1 large apple, cut into batons
- 1 red onion, thinly sliced
- 1 lemon, juice and rind

#### Method

- Cook rice according to packet instructions.
- Place chicken, soy sauce, garlic, ginger, and pepper in a bowl, mix to coat. Cover and leave to marinate for 5-10 minutes.
- As the chicken marinates, prepare the salad by tossing the salad ingredients in a bowl.
- Add enough oil to a frying pan to lightly coat the bottom of the pan, heat on medium high heat on the stove.
- Place cornflour on a plate and coat the sliced chicken, dust off any excess flour and fry. Cook for 3-6 minutes, turning halfway, or until the chicken is golden and cooked through.
- To serve, place a portion of rice in a bowl, top with salad, karaage chicken and Japanese mayo or your favourite sauces.

#### Adapt it:

- Use firm tofu or tempeh in place of chicken to make this a vegetarian dish, adjust cooking times accordingly.
- Use gluten free soy sauce if needed. Choose reduced salt soy sauce for children.
- Eat for lunch the next day, and any remaining rice can be frozen for another day.

## Pataka BERRIES

WE HAVE A FULL RANGE OF NEW ZEALAND GROWN FROZEN BERRY FRUIT!

Frozen outdoor tomatoes, potatoes and Real Fruit Ice Creams made with NZ grown fruit.

768 Marshland Rd, Christchurch | Ph: (03) 323 7896 | Email: patakaberries@xtra.co.nz  
www.patakaberries.co.nz

### ARTISAN

by rangiora bakery

Call in and pick up a fresh Sourdough loaf from our selection!

A sourdough starter takes on a life of its own if you feed it and take care of it.

We started our starter about 25 years ago and it has been watered and feed ever since. It gives our sourdough a very authentic and unique flavour that can only be found in the Artisan by Rangiora Bakery Sourdough Loaves.

Open daily 7am – 5pm 18 High Street, Rangiora | 03 311 8837 | www.rangiorabakery.com

### Certified Organic Products for People, Pets & Plants

- Neem Skin and hair care products
- Neem Garden Care Products
- Neem Pet care products
- Ayurvedic health supplements
- Diatomaceous earth powder (Animal feed and soil conditioner)

www.greentrading.co.nz | www.nativeneem.com

### Enjoy our specialty range of retail packs of biscuits in traditional flavours using our same 'from scratch' recipes for over 50 years!

Windmill Biscuits | Hokey Pokey | Belgium | Shortbread | Toffee Biscuits | Almond Rings | Afghans | Walnut Crisps

Open daily 7am – 5pm 18 High Street, Rangiora | 03 311 8837 | www.rangiorabakery.com

### WHAT'S HAPPENING AT CBK CRAFT BAR & KITCHEN?

CBK Craft Bar & Kitchen Kaiapoi is the heart of the community in every way. We love to help support local teams, clubs & activities where ever possible, with a variety of fundraising opportunities.

We have a large venue with plenty of space for all your functions or the family & kids to play & enjoy. Come celebrate with us!

4/77 Hilton Street Kaiapoi P. 03 327 9224 | hamish@cbkkaipoi.co.nz  
Open 7 days a week, Monday to Friday from 11am to late  
Weekends from 9am to late

WWW.CBK.NZ - IT'S A LOCAL THING!

TEAR THIS OFF FOR A FREE FAMOUS CBK SKILLET COOKIE.

Available when dining in, until 5th September  
One FREE Dessert per voucher.



## WHEN THE "BRAND" IS MORE THAN JUST THE BADGE

The Brand Mowers & Chainsaws store is a Husqvarna Crown Dealer and one of the busiest sales and service centres in North Canterbury.

In 2019 the business was bought by Tony, Kerin, Simon and Emma Brand. As owners of Brand Logging, Brand Mechanical and Brand Earthmoving they invested a wealth of knowledge and experience to the store and a clear goal.

"Our ambition for the store is to be the preferred mower and chainsaw shop in North Canterbury," says Tony. "And renowned within New Zealand as an exceptional Husqvarna Crown Dealer."



Tony Brand: Director/Owner

### THE HISTORY

The story starts way back in the early nineties. At that time, the Government run New Zealand Forest Service Workshops in the Ashley Forest were closed down, making many staff redundant and leaving them jobless.

Malcolm Mead was one of these employees. As a Qualified Mechanic, he decided to set up his own mechanical workshop in the Ashley Forest, along with his late wife Daphne. This was the start of Mead Engineering Ltd. They hired many of the ex-forestry staff and became known as the "go to" mechanical and engineering business in North Canterbury, dealing with everything from cars to heavy machinery.

In 1991, Malcolm began working with Husqvarna NZ. There was no North Canterbury dealer for the brand and as the working relationship developed, Mead Mowers & Chainsaws was appointed as the Rangiora

Dealer. The sales grew and due to the mix of town and country customers that they were targeting, the shop needed to move closer to the town centre. So, for seven years they had premises in Rangiora's High Street where small repairs were done and Husqvarna products sold. They soon outgrew that space and moved to larger premises in Southbrook before eventually landing in the current, purpose-built premises on Flaxton Road. With a bigger showroom, parts department, offices, workshop and a huge customer car park – it's a prime spot.

Over the years, the shop has built an incredible reputation amongst the community based on its knowledgeable staff, expertise and good old fashioned customer service. Gavin McClung managed the store for many years, clocking over 30 years' service and was known for his industry knowledge-if Gavin didn't know, it wasn't worth knowing.

### THE BRANDS CHANGE

In 2019 when the Brands bought the business from Malcolm - the burgundy and white Meads' signage changed to the navy and white Brand Mowers and Chainsaws livery.

Having many years of expertise in the logging industry, Tony Brand brought a wealth of knowledge and ideas to the shop, along with a business acumen that has seen him continue to run a successful logging company throughout Canterbury. His reputation in the industry contributes to the ongoing success of the store. It means we have contacts and access

to machinery that other dealers don't have, we can organise chainsaw demonstration days with a truck load of logs to cut up, or access to a paddock across the road to demonstrate mowers to customers.



*"Our ambition for the store is to be the preferred mower and chainsaw shop in North Canterbury."*



### LET'S TALK MOWERS

Brand Mowers & Chainsaws is primarily a Husqvarna dominated shop and although we do sell Karcher, Masport, Tandem and a host of other suppliers' product – the showroom is 95% orange.

On display is Husqvarna's full range of chainsaws, ride-on mowers, hedge trimmers and brushcutters - from domestic home use designed gear through to commercial and professional product.

We are preparing for a bumper spring and with the uncertain world-wide shortage of stock, the team have been proactive in securing plenty of choice for customers. We are currently fully stocked across all models and have a great selection of mowers for every property. All of our mowers are eligible for Husqvarna's 5-year warranty, and we will deliver them locally free of charge.

We also work with large companies, having just filled a sale of nearly a dozen mowers to dairy farms in the North Canterbury and Selwyn districts.

### ROBOTIC MOWERS – CUTTING EDGE TECHNOLOGY

Husqvarna Robotic Auto-mowers, which are rated as one of the best in the world, are becoming more and more popular in North Canterbury, so if you are thinking of upgrading your ride-on, consider one of these as an option.

They are underestimated on their capabilities as a mower, having been designed to replicate the job of a ride-on mower, without the ongoing maintenance of one. The largest auto-mower will mow up to 5000m<sup>2</sup> of lawn area at 208m<sup>2</sup> per hour and mulch the daily growth that it cuts with its double-edged razor blades. Anywhere that a ride-on will mow, these will mow – with a better finish. There is even a four-wheel drive model suitable for mowing up to 70% slopes. These are no toy.

We offer a free, no obligation, property assessment and full installation service – alternatively, if you wish to install yourself, we will offer you expert advice and walk you through the install process. Come in and see Reuben to find out more about these mowers or if you want to get a property assessment underway.

### THE WORKSHOP AND SERVICING

As well as selling mowers and related equipment – we also help customers maintain them.

In spring, the workshop is where it all happens, with mowers coming and going weekly by the dozen. We service and repair all makes and models of power equipment, from petrol generators, concrete floats and water blasters to ride on mowers, chainsaws, hedge trimmers and rotary mowers.

Image: Brendan Holt; Display

Image: Brendan Holt; Display

Image: Brendan Holt; Display

Image: Brendan Holt; Display

Image: Brendan Holt; Display

Image: Brendan Holt; Display

Image: Brendan Holt; Display

Image: Brendan Holt; Display

Image: Brendan Holt; Display

Image: Brendan Holt; Display

Image: Brendan Holt; Display

Image: Brendan Holt; Display

Image: Brendan Holt; Display

Image: Brendan Holt; Display

Image: Brendan Holt; Display

Image: Brendan Holt; Display

Image: Brendan Holt; Display

Image: Brendan Holt; Display

Image: Brendan Holt; Display

Image: Brendan Holt; Display

Image: Brendan Holt; Display

Image: Brendan Holt; Display

Image: Brendan Holt; Display

Image: Brendan Holt; Display

Image: Brendan Holt; Display

Image: Brendan Holt; Display

Image: Brendan Holt; Display

Image: Brendan Holt; Display

### TIMELINE

**1990** – Malcolm Mead starts Mead Engineering Ltd after the Government run New Zealand Forest Service Workshops in the Ashley Forest are closed down.

**1991** – Malcolm Mead starts working with Husqvarna. The relationship develops and Mead Mowers & Chainsaws is appointed as the Rangiora Dealer for Husqvarna.

**EARLY 90'S** – Mead Mowers & Chainsaws moves to new premises on Rangiora High Street.

**1998** – Mead Mowers & Chainsaws move to premises in Southbrook.

**EARLY 00'S** – Mead Mowers & Chainsaws moves to purpose-built premises on Flaxton Road

**2009** – Tony and Kerin Brand buy Mead Engineering Ltd from Malcolm. A handshake deal is done and it is agreed that when the time came for Malcolm to sell the mower shop, the Brands would get the first offer to buy.

**2019** – Tony, Kerin, Simon and Emma Brand buy Mead Mowers.



### MEET THE TEAM

With the recent retirement of Gavin late last year, Steven Hunt who has been with the Company for over 15 years and has Managed the workshop and Technical team, was promoted to Store Manager and Reuben Warner was employed as the Sales Manager to replace Gavin in the Sales and Parts department.

Many of you will know Peter Frampton from the front counter who has been sourcing parts for customers of the shop for nearly a decade and Diane Wunsch in the office. There are now 5 technicians in the workshop, Lewis Baker who is highly experienced in anything small motor related – especially Stihl and Karcher products, Stuart Whiteley who assembles and runs up all of our new mowers and plant, Daryl Roe and newly employed Hamish Pulley – who are our auto-mower experts.

Tony's daughter Gemma is also involved in the running of the store behind the scenes, along with Angela Baker who takes care of all our accounting needs. Tony can often be found filling in on the Saturday roster and covering for Sales when required. In the busy times, we also share Technicians from Brand Mechanical to help keep on top of the servicing work load.



Steve Hunt: Store Manager/Workshop Manager/Mechanic

Reuben Warner: Sales/Showroom Manager

Lewis Baker: Mechanic



Peter Frampton: Sales & Parts Associate

Daryl Roe: Mechanic

Stuart Whiteley: Technician

Hamish Pulley: Technician



Diane Wunsch: Office Administrator

Angela Baker: Accounts Manager

Emma and Simon Brand



From \$2,190.00



HUSQVARNA AUTOMOWER® 450X



HUSQVARNA AUTOMOWER® 435X AWD



Authorised Husqvarna Sales & Service Dealer

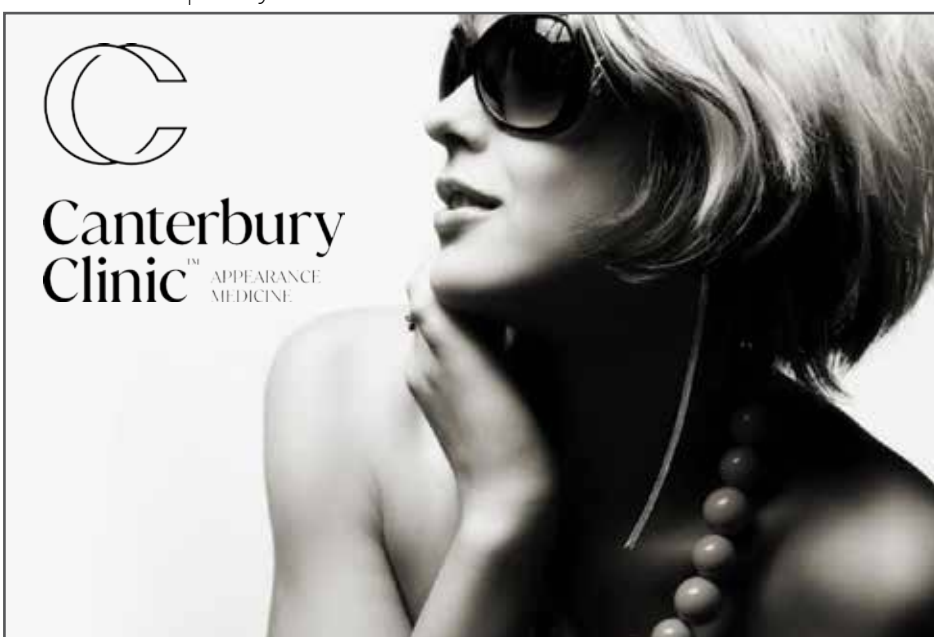
Come in and see Reuben to find out more about these mowers or if you want to get a property assessment underway.



### Contact Us

275 Flaxton Road, Rangiora  
sales@brandmowers.co.nz | Ph 313 6640  
www.brandmowers.co.nz





**Canterbury Clinic**  
APPEARANCE MEDICINE

## THE Destination TO A MORE BEAUTIFUL YOU

Enjoy beauty services given with care and kindness in the comfort of Dr Laurie's private country clinic in Oxford.

Skin rejuvenation, cosmetic injectables and luxury facials. Start your journey today by booking a complimentary consultation.



Appointments can be made via [www.canterburyclinic.co.nz](http://www.canterburyclinic.co.nz), on Facebook or call us on 03 925 8875

@cantyclinic

Rata St Business Hub, Oxford  
[www.canterburyclinic.nz](http://www.canterburyclinic.nz)



## ALL ABOUT THE EYES

by Dr Peter Aspell (Durham Health Cosmetic)

The eyes are usually the first feature we notice when we look at each other or ourselves in the mirror.

The most common complaint I get from my patients is 'looking tired' and this often refers to the darkened hollows/bags under the eyes that we all develop over time. This can, of course, be exacerbated by stress and poor sleep but is also the inevitable result of ageing. This happens because the lower eyelid skin gets thinner it sags and the bony skeleton around the eyes changes shape and the small plump pockets of fat under the skin break down over time. The overall appearance changes from full and smooth to hollow and droopy.

Until a few years ago the only option to treat this was surgery, which although effective can be risky and involve significant cost and recovery time. Dermal fillers, which break down naturally over a year or so have become a much more popular and practical way to address this extremely common problem safely and with pretty immediate results.

Not every patient is suitable for tear trough fillers alone but a simple test you can try in the mirror is gently press your fingertips against the cheekbones just below your eye bags and see if that gives them a bit of improvement. If so, then you're likely

a good candidate. For some people, treating the cheekbones and temples with a bit of filler first is a better idea but a good cosmetic doctor will be able to talk you through this

**I really enjoy treating tear troughs because the result is an instant freshening of the eyes and the treatment takes less than an hour, is painless and costs a fraction of what surgery costs.**

All treatments start with a thorough consultation and discussion around the best way to achieve a freshened and more youthful result - unlike lip fillers which some patients like to look exaggerated and overfilled, under-eye treatments always aim to look subtle. The goal is simply to look refreshed and well rested. It's rare for anyone to know it's been treated - which is great as most patients value their privacy. Combining this treatment with a good skin care routine and eye cream yields the best outcomes.



Dr Peter Aspell offers a skillset of advanced techniques and procedures exclusive to doctors. Confidentiality and privacy are paramount at Durham Health, nobody would know why you enter our medical facility.

03 3134659 | [www.durhamhealth.co.nz](http://www.durhamhealth.co.nz)



Durham Health Cosmetic Clinic offers a range of cosmetic treatments to refresh and revitalise your appearance.

Botox | Dermal Fillers | Micro needling for fine lines and scarring  
Radiofrequency Surgery | Prescription Skincare products

A revitalised you is only a consultation away.

All treatments carried out by highly experienced Dr Peter Aspell.  
Contact Durham Health Cosmetic Clinic (03)3134659 - start the journey today.  
[www.durhamhealth.co.nz](http://www.durhamhealth.co.nz)



Dr Peter Aspell offers a skillset of advanced techniques and procedures exclusive to doctors. Confidentiality and privacy are paramount at Durham Health, nobody would know why you enter our medical facility.



Manicure, Spa Pedicure, SNS dipping powder

Open 7 days a week | Both bookings and walk-ins are welcome | Gift vouchers available

03 6625 066 | [goldennailspa21@gmail.com](mailto:goldennailspa21@gmail.com) | Shop 5, 15 High Street, Rangiora



## HIDDEN GEMS North Canterbury

At Essence Magazine we know we are pretty biased, but we think North Canterbury really does have it all. Whether you've lived here all your life, have just moved to the area or visiting from out of town, there is always something new to see and businesses to explore.



### VILLAGE GREEN ANTIQUES

Take a stroll down memory lane at Village Green Antiques in Rangiora's Gable's Arcade.

Full of high-quality China, glassware, art and jewellery, the team at Village Green have lovingly curated a vast array of antiques that will make you yearn for yesteryear. Whether you're after something specific like a beautiful brooch or rare piece of China, or you just enjoy browsing, you won't be disappointed by what's on offer at Village Green Antiques.

[www.villagegreenantiques.co.nz](http://www.villagegreenantiques.co.nz) | Shop D, The Gables Arcade, 96 High Street, Rangiora | 03 261 2222



### STYX LANDSCAPING & PROPERTY CARE

We are North Canterbury based and would love to be given the opportunity to turn your section into your own 'hidden treasure'.

From an affordable, low maintenance landscape, to a uniquely designed mind-blowing outdoor area, we will eliminate any uncertainties you may have whilst transforming your section beyond your wildest dreams.

We make the whole experience easy and enjoyable with a finished product that will make you smile for years.

027 567 0016 | [styxpropertycare@gmail.com](mailto:styxpropertycare@gmail.com)  
[www.styxpropertycare.co.nz](http://www.styxpropertycare.co.nz)



### THEA'S BOUTIQUE

Open the door at Thea's Boutique - Oxford and it instantly has a warm rustic vibe where you just want to linger, try on or browse all the lovely fashion, accessories, footwear and interesting home decor items.

**A destination in itself.**

55a Main Street, Oxford  
Open Tues - Sunday 10 - 4 | 03 242 0490



### BAX AND BERG

The secret to great style, is feeling good in what you wear. That is what the girls at Bax & Berg are there for. Helping you find the perfect style for your body so you can walk out feeling gorgeous and confident.

A fabulous range of labels from NZ, Australia, America and Europe. We have something for every style and every budget.

A destination store that is worth a visit and a fabulous website, shipping throughout NZ.

88 Carters Road, Amberley  
03 314 7251 | [www.baxandberg.co.nz](http://www.baxandberg.co.nz)



### SEFTON FLOWERS

Boutique flower farm Sefton Flowers grow local, seasonal, climate positive flowers and foliage with love in North Canterbury.

We offer seasonal grown flowers and foliage for you to pick and take home where you get to create your own stunning floral arrangements.

We also create boutique bouquets on request and sell flower and foliage bunches - delivery must be pre-arranged.

Contact Maria to arrange a visit or place your order 021 02976401  
[seftonflowers@gmail.com](mailto:seftonflowers@gmail.com)





### BILLIES SEASONINGS

Take a trip to The Old School Collective at Waikuku and visit Billies Kitchen Shop – the home of Billies Seasonings – with an array of fabulous and functional kitchen must haves, pantry items and beautiful gifts.

Meet Lynda or Laura and be inspired to cook tasty dishes. There is also a Thermomix on site for any questions, tips or tricks. Open Wednesday to Sunday 10am to 3pm.

1429 Main North Road, Waikuku  
www.billies.co.nz



### VINTAGE ROSE

For a unique shopping experience – visit Vintage Rose, the Nostalgic Boutique

Recently celebrating their 2nd Birthday, Maree would like to thank you all for the support shown and for shopping local.

This unique boutique is bursting wall to wall with treasures and an ever changing selection of giftware - including vintage crystal, fine bone china, homewares, candles and locally crafted jewellery, collectible vinyl, and much more. Vintage Rose is the perfect choice to find that unique or traditional gift for any occasion.

174 Williams Street, Kaiapoi | 027 427 0045



### RIVER WILLOW GARDENS

High Tea and Garden Tours

Enjoy an afternoon of decadence with a stunning high tea or lunch with your friends and family. Especially catered to you, choose a special spot in the garden to enjoy the beautiful food and specialty range of teas, followed by a relaxing stroll through these beautiful grounds.

By appointment only, contact Caroline on 027 675 1483, located between Rangiora and Cust.

www.riverwillowgardens.com



### PENELOPE CHILVERS

Penelope Chilvers has a reputation for superb quality, comfort and effortless style.

Discover the range of iconic tassel boots in store and online now.

Rangiora Equestrian Supplies  
623 Lineside Road  
www.rangiorasaddlery.co.nz



### THE COFFEE RUN CAFÉ

Located on Good Street, The Coffee Run Café recently opened its doors for business.

Come into our friendly café and enjoy amazing coffee and be tempted by the array of beautiful food in the cabinet or order from our menu.

We specialise in breakfast, lunch including a selection of vegetarian options and fresh salads.

Dine inside our cosy café or outside on a sunny day.

03 310 7440  
3b Good Street, Rangiora

### WAIPARA SPRINGS

“Waipara Springs are the founding winery and restaurant of the Waipara valley and remain an original family owned and operated estate. Hosts Andrew and Katie Moore value the importance of the finer things in life and provide a complete wine, dine and relax experience”.

There is a uniquely comfortable experience that can't be replicated and must be experienced to truly appreciate.

409 Omihi Road, Waipara  
www.waiparasprings.co.nz



### LAVENDYL LAVENDER, KAIKOURA

The Home of Myra's World-Famous Lavender-Based Ice Cream.

Lavendyl is the place to try a different culinary experience, one based around lavender. We are known for our lavender-based ice cream which is made onsite; we aim to have at least five varieties and a vegan version in stock.

Book a high tea or lavender pickers lunch for something more substantial. Ask about our Father's Day specials. Wander in the gardens and browse in the shop.

268 Postmans Road, Kaikoura  
03 319 5473  
www.lavenderfarm.co.nz



### WEE KIWI KIDZ

Treat your wee kiwis at Wee Kiwi Kidz in Rangiora.

This bright and cheerful boutique children's shop offers a wide range of clothing, essentials and toys for newborns to eight-years olds. Home to leading brands such as Wishbone bikes and Wilson + Frenchy, Wee Kiwi Kidz is a one-stop-shop for all your needs.

Whether you are shopping for your own children or need a gift for a birthday, christening or a baby shower, the friendly team is ready to help you select the perfect item.

www.weekiwi.co.nz | 133 High Street, Rangiora



### PARIS BAKERY AND CAFE

Brimming with delicious sweet treats and savoury delights, a visit to Paris Bakery and Café should be at the top of your list the next time you visit Amberley.

Winner of the North Canterbury Business Awards: Tourism and Hospitality Award 2021, this family-run business is well known for their beautiful baguettes, artisan breads, croissants and delicate French pastries, as well as their scrumptious mille-feuille. And for those who love a good old-fashioned Kiwi pie for lunch, there is something to suit every tastebud.

96b Carters Road, Amberley  
03 975 3125



### THE WOOL SHOP

Nestled amongst the Heritage buildings on Rangiora's High Street, The Wool Shop will delight shoppers with its modern, bright fit out and a selection of wool, yarns, accessories and books to satisfy the needs of knitters and crocheters alike.

Make your project a reality with helpful, friendly staff to encourage you along the way.

Monday – Friday: 9am to 5pm  
Saturday: 10am to 4pm  
Sunday: Closed to create and daydream, rest and relax  
123 High Street, Rangiora | Ph 03 313 6062



### CANTERBURY EQUESTRIAN

Canterbury Equestrian Woodend and Templeton are recognised as one of the leading stockists of the well known R.M. Williams brand.

They cater for both men and women in this range, from their fabulous boots which will take you from country to town to an evening out.

Along with an extensive range of shirts and jeans including the 90th Anniversary Limited Edition collection of footwear and clothing.

If you are thinking R.M. Williams this store is a must see.

Main Rd Woodend and Main South Rd Templeton | Ph: 033496241



### THE BARRELMAN

In the market for some sustainable, bespoke homewares and gifts?

Then make a date to see The Barrelman. Located at Ashworths Corner in Leithfield, Pure by the Barrelman is a family

run business that specialises in products made from recycled oak wine barrels. From lazy susans, platters, chopping boards, gumbot racks, outdoor furniture and garden decor, the talented folk at The Barrelman are the people to see for something sustainably unique.

30 Ashworths Beach Road, Leithfield | www.thebarrelman.co.nz



### HI GORGEOUS

Red Light Therapy has become increasingly popular in recent years.

The benefits to skin, muscle and soft tissue are incredible. The technology is designed by NASA and has filtered down to the medical and beauty industries and has taken world by storm.

**Benefits include:**

Skin rejuvenation and anti aging, faster muscle recovery after workouts, reduced inflammation and pain relief, faster healing of injuries, aches, sprains, soothes irritated skin, relaxation and stress relief.

For more information and pricing call us on 033136552 or visit our website www.higorgeous.co.nz



### MORRISON CARS

Whether you are up sizing, downsizing or just fancy a new set of wheels, Morrison Cars Rangiora have you covered.

Locally owned and operated, the friendly and experienced team at Morrison's specialise in quality used cars.

From family wagons and SUVs to hybrids and hatchbacks, Morrison's have a wide selection of vehicles on offer, with finance options available.

636 Lineside Road, Rangiora  
03 3107706 | rangiorasales@morrisoncars.co.nz  
www.morrisoncars.co.nz



### MEAT 2 U

Locally owned and operated, Meat2U is a home-kill and butchery business that specialises in personalised handcrafted meat processing.

Catering for a wide range of culinary tastes and dietary requirements, and offering a delicious range of gourmet and gluten-free options for all cuts.

- Meat Processing
- Wholesale Meat Sales
- Factory direct Sales
- On-Line Sales

Contact Meat2U today, and stock up your freezer for winter. Ph. 03 313 0022 or 0272 63 28 28 | www.meat2u.nz



WovenVeranda, Old School Collective, 1429 Main North Road, North Canterbury | Open Wednesday through Sunday from 10am – 3pm. You can contact the friendly team on: 021 Woven 1 or 021 968 361 | Web: www.wovenveranda.co.nz

## WovenVeranda

### ENJOY YOUR GARDEN RETREAT ALL YEAR ROUND

- All weather wicker – Polycarbon manufactured for the NZ environment - High UV to Snow
  - Commercial Grade Aluminium Framing
  - Relaxing Sofas and Chairs to Dining Settings
  - All furniture items sold as individual pieces
- Direct from the manufacturer to your garden retreat







Rangiora Lawn Tennis Club opening day, October 23rd 1947

# THE BALL IS IN A *new* COURT

words: Michelle McCullough images: supplied

For more than 90 years, the Rangiora Tennis Club was more than just a place to play tennis. It was a place where people could come together, learn new skills and be part of a community.

The club was founded in 1929 by local land agent Larry Devlin who had grown tired of playing lawn bowls and had developed a keen interest in tennis – despite only having one arm. In notes taken from the club’s 50th Jubilee Book, Mr Devlin stated that the inception of the Rangiora Tennis Club was met with much enthusiasm from other likeminded locals.

After securing “an ideal spot” of land on King Street, he enlisted the help of 20 eager members who worked together to secure a loan of 3000 pounds from the Union Bank of Australia. This was then used to purchase the land, install five courts, fence the site, and erect a small club house.

The club hosted its official opening day in November 1929, and in the first year had more than 80 members. The advent of the Second World War saw many of the male members travel overseas to assist with the war effort, leaving the club in the capable hands of its female members. Playing weekly matches, the women of the club played an important role in the club’s survival.

In order to expand its reach, under the watch of coach Chrissie Escott, the club introduced junior coaching in 1950. This made tennis more accessible for the community, and resulted in the club playing a positive role in the lives of local youth. In the years that followed, the club was well-known for its junior programme, with many youth players going on to represent Canterbury at regional and

national competitions.

However, in 1952 disaster almost struck when a lack of finances and support threatened the future of the club. An extraordinary meeting was called, and a motion to close the club was denied. In 1954 the club sold a portion of their land on King Street, taking the club’s size from its original size of 2.5 acres to just over 1 acre. This sale, as well as fundraising activities by its members, enabled the club to build a new pavilion which was officially opened in 1961.

In the years that followed, the club hosted numerous local tournaments, and regularly hosted other tennis club members from around the South Island.

Rangiora Tennis Club Patroness Elizabeth Brocherie, who served as club president from 1976 to 1983, said a lot of hard work and dedication went into the running of the club. Many members were actively involved in the day-to-day maintenance of the courts as well as the organisation of numerous fundraising activities to enable



Stuart Chalmers, new coach at Coldstream Tennis Club

the club to purchase new equipment and employ coaches for training programmes.

**“A lot of hard work went into those courts. A lot of volunteers gave up a lot of time to keep the club running because they loved it.” Mrs Brocherie said.**

In 2020, due to declining membership and costs associated with maintaining the courts, the decision was made to amalgamate the club with the Southbrook Tennis Club to form the Coldstream Tennis Club. The club sold the courts on King Street for \$1.3million to a housing developer at the end of 2020, and hosted its last tournament on June 20, 2021. The funds from this sale were combined with the sale of Southbrook’s courts, and in conjunction with the Waimakariri District Council, used to build a new tennis facility on Coldstream Road, adjacent to the Mainpower Stadium. The new courts have eight Plexipave and two AstroTurf courts with lights for night-time playing.

Former Rangiora Tennis Club President, and current Coldstream Tennis Club President Laurence Smith said the formation of the new club had only been made possible by the hard work and dedication of past and present members of both clubs.

“Once we build our club rooms we will dedicate some wall space to recognise the history of the Rangiora and Southbrook clubs and how we came together. I think it’s really important to recognise all the people from the past that have made this possible, and the foresight of building those clubs in the past.

**“The opportunity the club provides for the future of tennis in Rangiora is huge. I think everyone would agree that has been involved in the previous two clubs, and now involved with the new club, it’s all about getting people to play tennis, get on the court and enjoy the game.**

If you look back through history, and you look at what we’re trying to do now, it really is all the same sort of thing. It’s not about the buildings and the courts - in the end it’s really about the people.”

On September 11, the Coldstream Tennis Club will host an open day. This will be an opportunity to check out the facilities, meet coach Stuart Chambers and test out the new courts.



## Matt Doocey

MP for Waimakariri

### Three Waters meeting

I recently spoke in Parliament on the Three Waters Bill, a topic causing much debate across New Zealand currently.

I made the point of calling on the select committee to get out and hear the voices of regional New Zealand, many of whom are vehemently opposed to the reforms being foisted on them.

Until now the process has felt very one-sided. Labour wants to ram through its unpopular legislation and seize local councils’ assets, and the best way to do that is to ignore the growing groundswell of opposition.

I did take some heart in Labour MP Greg O’Connor’s courage to take up the challenge when he said “we have an absolute obligation while we’re in this House to be courageous and I’m certainly very keen, as challenged by Mr Doocey, to go to every corner of New Zealand”.

I call on his colleagues to join him in taking this flawed and unworkable Bill to the regions to hear submissions from the people on the ground who this will affect.

From National’s perspective, we are also going out into regional New Zealand to hear people’s views on Three Waters, and I’m keen to hear from anyone who wants to share their thoughts.

**We think the government has got it wrong – the scale of benefits is simply not there.**

The co-governance and management structure is convoluted, not to mention the obvious disparity across different regions as each local council has invested differently in its infrastructure.

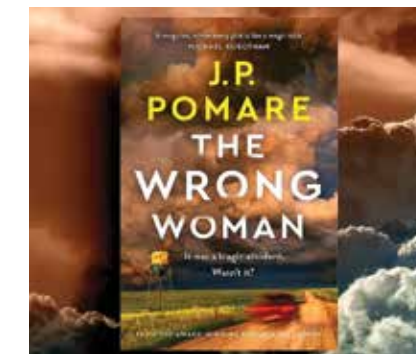
That’s why I have asked National’s Three Waters spokesperson, Simon Watts, to come to the Waimakariri. Kaikōura MP Stuart Smith will also join us as we tour the district, hosting four meetings in one day to get to hear from as many residents as possible.

I hope to see you at one of the four meetings on Sunday September 18: Papanui Club at 10am, Jaycee Hall Oxford at 12.30pm, Kaiapoi Riverside Church at 3pm, Leithfield Better Half Kitchen at 5.30pm.



## PAGE TURNERS

words: **Emmas at Oxford**



### Wrong Woman

By J. P Pomare

**It was a tragic accident. Wasn’t it?**

A private investigator returning to the hometown he fled years ago becomes entangled in the disappearance of two teenage girls.

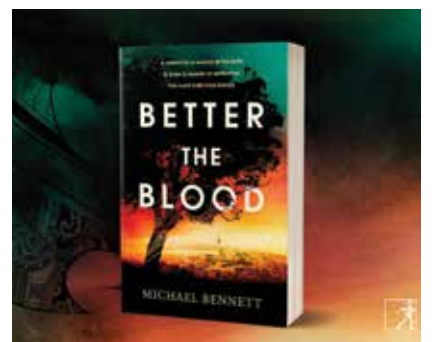
J.P Pomare is an award winning NZ crime writer; and his 5th novel is fast paced, and packed with twists and turns to leave your head spinning.

**What we thought ....** “Compelling and unpredictable; and left hanging to the very last page ..... loved it. Definitely hunting out his backlist now.”



**EMMAS AT OXFORD**

53 Main Street, Oxford  
www.emmasatoxford.com



### Better The Blood

By Michael Bennett

**A serial killer in search of retribution for a bloody historical event. A female Maori detective balancing the clash between culture and duty.**

Hana is juggling single motherhood & her career in the Auckland CID; in pursuit of a Maori killer who is taking lives in utu for the wrongful execution of his ancestors, eight generations ago.

**What we thought ....** “Set in the present, but dealing with issues from New Zealand’s past, the book was an awesome read. Any Te Reo phrases/ words are explained as a footnote on the same page, making it an easy read. The female Maori detective is strong and likeable – would love to meet her. Please read”.

**VISIT US INSTORE OR SHOP ONLINE**

Individually selected books and gift ideas you might not find elsewhere.

New Merinomink styles now available. Plenty of new books and jigsaws!

Not everything is on our website, phone or message if you are after something specific.

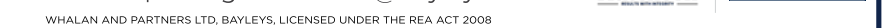
For a small fee, we can also arrange delivery. Follow us on Facebook for the latest news and arrivals. Open 7 Days 10am – 5pm | Ph 03-312-3432

## PEOPLE PROPERTY PERFORMANCE

Margo has been selling real estate for 25 years, and is well known as a highly skilled and professional agent who takes exceptional care with all aspects, leaving nothing to chance. Her clients always come first, with a clear focus on achieving Results with Integrity.

**For the ultimate real estate experience, give Margo a call today.**

Margo Hutcheon AREINZ 027 485 8003  
03 311 8020 | margo.hutcheon@bayleys.co.nz



### Specialist Giftware



10 Cone Street, Rangiora | P: 03 313 5474  
www.cameofinearts.co.nz

### Readings with Holly

Clairvoyant / Medium

Reiki Master

With appointment times available throughout the week and on weekends!

Phone 03 314 9073

www.mistypathway.com

Proud supporters of the Coldstream Tennis Club

345a FLAXTON RD, RANGIORA | P: 03 313 7983 | E: online@thesportshop.co.nz | thesportshop.co.nz

**See us for all your tennis needs!**

Asics Mens Resolution Tennis Shoes

Asics Womens Resolution Tennis Shoes

Did you know we are the only providers of re-stringing racquets in North Canterbury?



"For me, it's about being creative and it's always something new."



## Being Seen

They say if you love what you do, you never work a day in your life - and that's exactly how Jacques and Amelia de Beer feel.

North Canterbury Signs is owned and operated by both Jacques and Amelia and their business offers a wide range of services including graphic design, signwriting, sign installation, digital printing, and screen-printing CNC 3D Signs.

From store-front signage and vehicle branding to banners, flags, stationery, and uniforms.

Jacques and Amelia can help you achieve your goals, however big or small. Whether you have an idea in mind or need help designing the perfect logo, the talented duo can work with you to create something truly memorable. Based in Waiua, North Canterbury Signs services the entire North Canterbury region as well as Christchurch.

The husband-and-wife team pride themselves on offering exceptional service and workmanship at the best price possible, Jacques said. "We have all our own machinery - including the CNC machines and laser printing machinery and this enables us to do everything ourselves including the manufacturing of light boxes and all other aspects of CNC work. This allows us to work with all budgets, and if people bring us a picture of exactly what they want we can offer specialist advice and make it possible because we do not have to wait on an unknown third party (which adds to the time and budget) before letting them know if it is possible as we manufacture everything on site."

While qualified graphic designer Jacques focuses on the creative side of the business, Amelia takes care of the company's administration and is the face of the company - liaising with clients and helping them achieve their goals.

"What I love the most about this industry is seeing the nervousness and excitement of people who are starting a new business, and watching it grow - I also enjoy getting to know the clients over time and developing a trust relationship which means understanding their individual quirks and needs so that they can confidently phone us and know that their specific requirements will be met," Amelia said.

Originally from South Africa, the couple has more than 60 years of experience in the signwriting industry and are extremely passionate about what they do. "For me, (Jacques) it's about being creative and it's always something new. It's as close to being an artist as you can be while earning an income. We love the craft and the people and I think this is what being a family business offers. It becomes more about the client as your relationship develops with your clients in a more personal yet professional way."

To find out how North Canterbury Signs can help your business, or to get an obligation-free quote, contact Jacques and Amelia today. For more information have look at their website: [northcanterburysigns.co.nz](http://northcanterburysigns.co.nz)



## Ross Campbell

Dear Readers,

Are you tired of the endless doom and gloom on the TV? The 'social engineering TV ads' being relentlessly forced on us at our cost?

I felt like a bit of a rant today, so please excuse me. Probably it's just the wet weather getting me down.

Examples of recent TV campaigns I dislike:

- Covid will overwhelm our health care system
- Zero road toll
- Climate crisis
- Three Waters - our lack of safe drinking water crisis
- Housing affordability crisis
- Inflation crisis

All of these have some merit, and I don't want to minimise any of them completely. Yet if you stop to think about aspects of them, you come up with some interesting observations. Let me explain using a couple of examples:

**Covid 19**

We are told by our Govt relentlessly that Covid is likely to strain our hospitals to breaking point. To avoid this, we locked down our entire population and bankrupted thousands of families who lost everything they had ever worked for. As a country, we borrowed billions and billions of dollars.

**Question: So why didn't these same Govt officials allow nurses fast entry into NZ at the start of this crisis, or even now so our hospitals can cope?**

**Cost of living/Inflation/Housing affordability**

We all realise fuel prices are a very large factor that impacts every step of the supply chain. These increased costs get added to everything that moves internally.

**Question: When the price of a litre of petrol was say \$2.00, I believe the Govt taxes accounted for approx 70% or \$1.40. With**

**petrol at \$3 per litre, the tax is \$2.10. An increase of \$0.70 cents. Or 50% more tax. If inflation is such a problem, and it is, why are our leaders not dropping the tax by 70 cents per litre?**

They were presumably happy with the tax level just weeks before the oil price rose?

**Housing affordability facts**

The Govt regulator has increased interest rates impacting the poorest in our communities to slow inflation largely caused by increased fuel costs.

New Govt lending rules have recently been imposed, making buying a house impossible for more people than ever before.

New Govt building standards requiring things like triple glazing in houses and other changes further increase the cost to build a house.

**Question: Every one of these changes directly make housing less affordable, despite it being the stated policy of our govt to lower housing costs for those in dire need? Why did they do it I ask?**

**Three Waters**

The sole rationale behind Three Waters is to achieve the following:

- Efficiencies of scale.
- Professional management.
- Allow for massive infrastructure borrowing.
- We were told this by the Govt expert brought in from Scotland.

**Question: Efficiencies of scale = cost savings?**

In the history of NZ, has the govt ever achieved efficiency in any endeavour? The \$700,000 cost to re-sow the one-hectare lawn at Govt house or the \$500,000 kids' slide should answer this question.

**Professional Management**

**Question: Can you name a Govt Dept that isn't currently in crisis? Yes, the IRD.**

**Borrowing**

If we can increase our overseas debt by approximately 160 billion for covid, which, if my basic maths is correct, that's \$32,000 per person in NZ, then we can assume our government knows and is good at borrowing money.

**Question: If there is no strong case for economic gains, Why are they stealing our local assets?**

So how do I stop myself from a spiral of despair? Well, I read good news stories for balance:

**Look up <https://www.humanprogress.org/>**

It turns out there is great stuff happening all over the planet "all the time". Sorry for the rant. This winter is getting to me.

	<p>Contact us:  <a href="mailto:office@campbellinsurance.co.nz">office@campbellinsurance.co.nz</a>                  021 521651</p>	<p><small>Opinions expressed in this issue are not necessarily those of Impact Publicity 2005 Ltd/Essence Magazine. No responsibility is accepted of unsolicited material.</small></p>
--	--------------------------------------------------------------------------------------------------------------------------------------------	----------------------------------------------------------------------------------------------------------------------------------------------------------------------------------------

**Graham & Sons**

Extensive Range of Carpets | Vinyl Planks & Vinyl Tiles | Timber & Laminate  
 In-house Carpet & Vinyl Installers | Friendly Family Business

333 High Street, Rangiora • Phone 03 313 8518 • [www.grahamandsons.co.nz](http://www.grahamandsons.co.nz)

# ASK AN Expert



## Katrina Green

Operations Manager, Ray White Morris & Co Property Management Ltd

Experience, knowledge & a drive to deliver exceptional service is the backbone to Ray White Morris & Co Property Management.

**How many years have you been in property management?**  
Over 16.

**What is your system for checking prospective tenants?**

Recent changes to legislation within the privacy commission has impacted both what and how we can ask for information when undertaking due diligence. It is no longer 1 step, there are now several steps. However once shortlisted and with the permission of the tenants we can complete credit, background and reference checks.

**How often do you complete an inspection and what is involved?**

The first inspection at a new tenancy is done 6 weeks from commencement, and then every three months after that. We use inspection software to record the inspection, checking to ensure there is no outstanding maintenance or damages and where necessary make recommendations so landlords can prepare for any upcoming maintenance. Most insurance policies require inspections to be completed a minimum of three monthly.

**How do you get paid?**

We have several fee options, and on average landlords will pay under \$40 per week for us to be on call and taking care of everything for them 24/7.

**Is it still really tricky to find a rental property - what is happening in the rental market?**

There is no blanket answer to this question, the market is changing constantly, some properties we are finding enquiry slow, and others we are bombarded with enquiry!

**Are rental rates coming down, becoming more affordable?**

The beginning of this year saw a real increase in rents and while the inflated rents have certainly come back down, they are still holding at a similar level. It is important to remember that most landlords have also experienced increases in costs and unfortunately in turn this has seen rents rise.

**How do you advertise your properties?**

Both word of mouth, and all the online platforms, we also run a database for tenants searching.

**Katrina Green**  
 Operations Manager  
 Ray White Morris & Co Property Management Ltd  
 E: [katrina.green@raywhite.com](mailto:katrina.green@raywhite.com)  
 M: 027 606 0030  
[canterburypm.co.nz](http://canterburypm.co.nz)



## Mark O'Donnell

CEO/Director/Financial Advisor

Local Financial Adviser focusing on Investment and Retirement Planning with over 30 years' experience. Canterbury Financial Services is located at 237 High Street Rangiora.

**What should I do with my KiwiSaver or Managed fund?**

If you are concerned or needing to access these funds in the near future, seek professional advice before making any changes. If nothing has changed around your timeframe, goals or objectives you should hold the course.

It is important to consider your reasons for the investment and your timeframe before you require access to these funds. Growth investments such as property and shares will go up and down in value regularly during times of uncertainty. It is however important you invest in these growth assets to maximise your long-term fund balance. One negative year in five should be expected if you want to generate above average returns over the longer term.

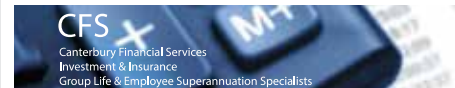
If you switch to a low risk or cash investment you could be crystallising a loss and miss the opportunity to recover the value on the rising markets as sentiment moves from a negative to a positive outlook. This is particularly so with share markets as valuations tend to move in advance on expectations of future earnings and certainty. For example, the standard and Poor's 500 index (which is an index of the top 500 US companies) has risen 9.11% from the 30 June 2022 to 29 July 2022, although still down -13.89% year-to-date. This doesn't mean there won't be more volatility as markets move to a new norm over time it just means investment markets can go up very quickly and it can be very difficult to make your capital backup if you are not in the market at these times.

It is generally too hard to time markets so for a diversified managed fund the best advice is to hold your current course and allow your investment managers to do the work they are paid to do.

**The old adage, "it's not about timing the market, but about time in the market".**

**If you have any questions or would like to discuss your investments, please contact Mark or Hayden from Canterbury Financial Services on Freephone 0508 237 583.**

237 High Street, Rangiora | Phone: 03 313 9200  
[www.cfslimited.co.nz](http://www.cfslimited.co.nz)



## Casey Walters

Senior Solicitor for Katherine Wilmott Legal Limited

Casey specializes in family law - with a particular interest in relationship property. Casey also assists with Wills, enduring powers of attorney, divorce applications, PPPR Act and other legal matters.

**When does my relationship become a "de facto" relationship?**

Generally, after three years living together. However, if your matter proceeds to Court, there are principles in the Property (Relationships) Act that mean you could be defined as a "de facto couple" earlier.

**What does it mean if we are considered a "de facto" couple?**

If you separate, all assets and liabilities, unless subject to one of the exceptions (property in a trust or Contracting Out Agreement for example) you are each entitled to 50%

**Is my inheritance separate or relationship property?**

Inheritance is usually separate property, provided it is kept separate and not intermingled (used by both parties). For example, if inheritance funds were used to repay a joint debt, it has become intermingled and now relationship property, unless protected by a Contracting Out Agreement.

**How can I protect my assets from the 50/50 division or being intermingled?**

A Contracting Out Agreement should be drafted to note which items are your separate property and therefore to remain yours if a separation occurs.

**Do I need to get a Separation Agreement?**

It's always best to get one! A Separation Agreement provides a clear written record of the relationship property division and anything else you have agreed upon (ie. spousal support, adjustment figures etc).

**How long do I have to be separated, until I can get a divorce?**

After you have been separated for at least two years, you can apply. It is handy to have the Separation Agreement to confirm a separation date you both agree upon!

Contact: [casey@kwlegal.nz](mailto:casey@kwlegal.nz)  
 Office Address: Second floor, 29 High Street, Rangiora  
 Website: [www.kwlegal.nz](http://www.kwlegal.nz)  
 Phone: 03 260 4777



## Martin De Gouw

Managing Director, Clyne & Bennie Plumbing and Electrical

Tradesman since 1989, business owner and Director since 1995. Independent Director of Master Plumbers, Plumbers Gasfitters and Drainlayer board.

Clyne & Bennie have employed over 300 staff throughout this period, currently employing 70+ in the group along with Co-Director James Cowles.

**What do I do in the event of a plumbing, gas, or drainage emergency?**

When you have a water leak isolate the system, every homeowner should make themselves familiar with where the cold water shut off is for the council supply or pump supply.

If you have a blocked toilet check if the sumps that take the waste from the bathroom or kitchen sink are overflowing, if they are, you have a blocked drain, call a drainage contractor that has equipment to clear drains.

**What can/can't you put down your drain when on a septic tank (e.g. detergents, washing liquid etc.**

Things to avoid from entering your septic tank system are harsh chemicals such as bleach, pesticides, nappy cleaner, antibacterial soaps and cleaners. A septic tank works actively with bacteria that breakdown the solids, so any chemicals that deteriorate the bacteria will seriously reduce the effectiveness of the system.

**How can I tell if I have a gas leak?**

LPG has a distinctive stench agent added which is often describe as rotten cabbage. If you identify the smell a gas leak is the likely cause. Isolate the gas system immediately then ventilate the area to make safe.

**What advice would you give someone looking to hire a tradesperson?**

All plumbing gas fitting and drainlaying work is classed a restricted work and can only be done by licenced persons. You should always use reputable firms, ask the tradesperson to show their licence.

**If needed, will you get any necessary permits or consents for the work?**

Clyne & Bennie will assist homeowners to obtain consents and permits. They are also very conversant with the relevant codes to assist in any design work required.

**For more information or assistance contact us via our website [www.clyne-bennie.co.nz](http://www.clyne-bennie.co.nz) or call now on 0800 37 47 37.**



**BURBIDGE AUTOMOTIVE**  
 Rangiora

WOF-SERVICE  
 FULL MECHANICAL REPAIRS  
 TYRES  
 COURTESY CAR AVAILABLE

325 Flaxton Road, Rangiora  
 Call Peter or Nikki on 03 313 3344  
[office@burbridgeautomotive.co.nz](http://office@burbridgeautomotive.co.nz)

**SPECIALIST CUSTOM PICTURE FRAMING**

Oak Oval and round frames  
 Memorabilia framing | Original art  
 Custom framing | Medals | Prints ...  
 & much more!

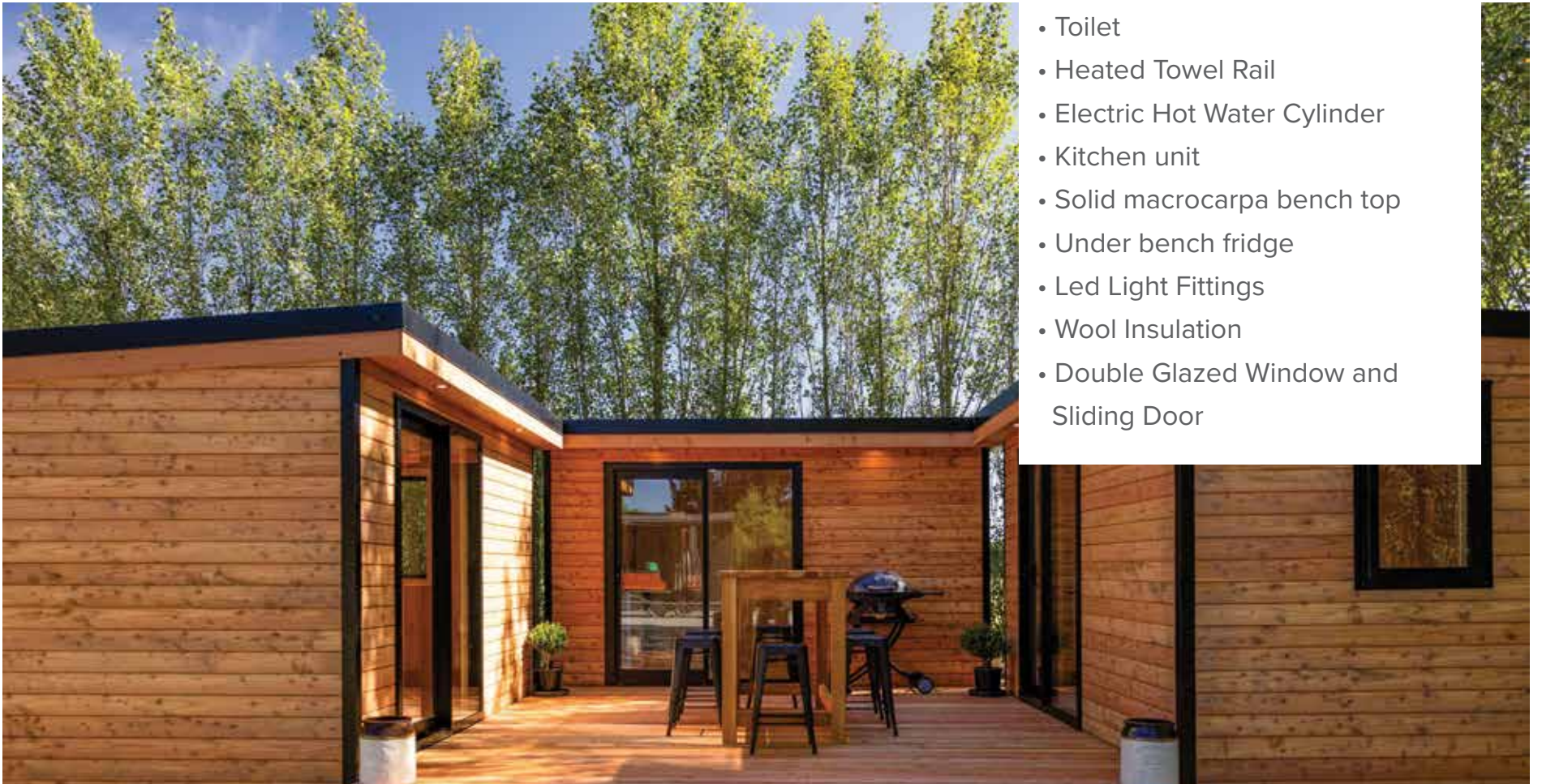
Forget the Rest - Come to the Best!

10 Cone Street, Rangiora  
 P: 03 313 5474  
[www.cameofinearts.co.nz](http://www.cameofinearts.co.nz)

# LOCALLY MADE TIMBER CABINS

## NEW KITCHEN/BATHROOM CABIN NOW AVAILABLE

- Corner Shower Unit
- Single Vanity
- Toilet
- Heated Towel Rail
- Electric Hot Water Cylinder
- Kitchen unit
- Solid macrocarpa bench top
- Under bench fridge
- Led Light Fittings
- Wool Insulation
- Double Glazed Window and Sliding Door



Portable, functional  
and stylish cabins



Locally owned  
and operated,  
Loburn  
Sawmill pride  
themselves on  
being North  
Canterbury's  
best local  
timber mill.

Wool-insulated and featuring double glazed windows with aluminium joinery, these aesthetically pleasing cabins can be stained with coloured wood oil tints to suit any location.

Made from durable Larch timber with Douglas Fir framing, these functional multipurpose cabins can also be used as an office space, sleepout, art studio, holiday home or even a man cave.

**LOBURN  
SAWMILL  
LIMITED**

**HOURS** Mon 8am-5pm | Tue 8am-5pm | Wed 8am-5pm  
Thu 8am-5pm | Fri 8am-5pm | Sat Closed | Sun Closed

32 Fletchers Road, Loburn, Canterbury, 7472, New Zealand  
(03)312-8963 | [sales@loburnsawmill.co.nz](mailto:sales@loburnsawmill.co.nz)